

CONCRETE MONUMENT
 AT WITNESS CORNER 66.42'
 S 3° 05' W OF MEANDER CORNER ON
 LINE BETWEEN SECTIONS 20/21,
 T1N, R3E, W.M., AS RECORDED IN
 MULTNOMAH COUNTY FIELD BOOK
 1982, 1983, 1984, PG. 55.
 (SECTION CORNER IS IN
 COLUMBIA RIVER.)

CONCRETE MONUMENT
 AT MEANDER CORNER ON LINE
 BETWEEN SECTIONS 20/21 AND
 NORTHERLY OF THE S.W. CORNER OF
 THE N.W. 1/4 OF SECTION 21, T1N, R3E,
 W.M. AS RECORDED IN MULTNOMAH
 COUNTY FIELD BOOK 1958A, PG. 68.
 (1/4 SECTION CORNER IS IN
 BLUE LAKE.)

LEGEND

- SECTION LINE
- 1/4 SECTION LINES
- 1/4 - 1/4 SECTION LINES
- LEGAL TIES TO WELLS
- REFERENCE MEASUREMENTS

FAIRVIEW

PERMANENT PIPELINE EASEMENTS ARE
 TO 10' EACH SIDE OF PIPE & 5' (20' TOTAL)
 TO WITHIN THESE LIMITS

VICINITY MAP

BLUE LAKE PARK

Application No. G-11306

Permit No. G10455

ACCORD BEARING
 & DISTANCE TO
 WELL 12

NOV. 1984

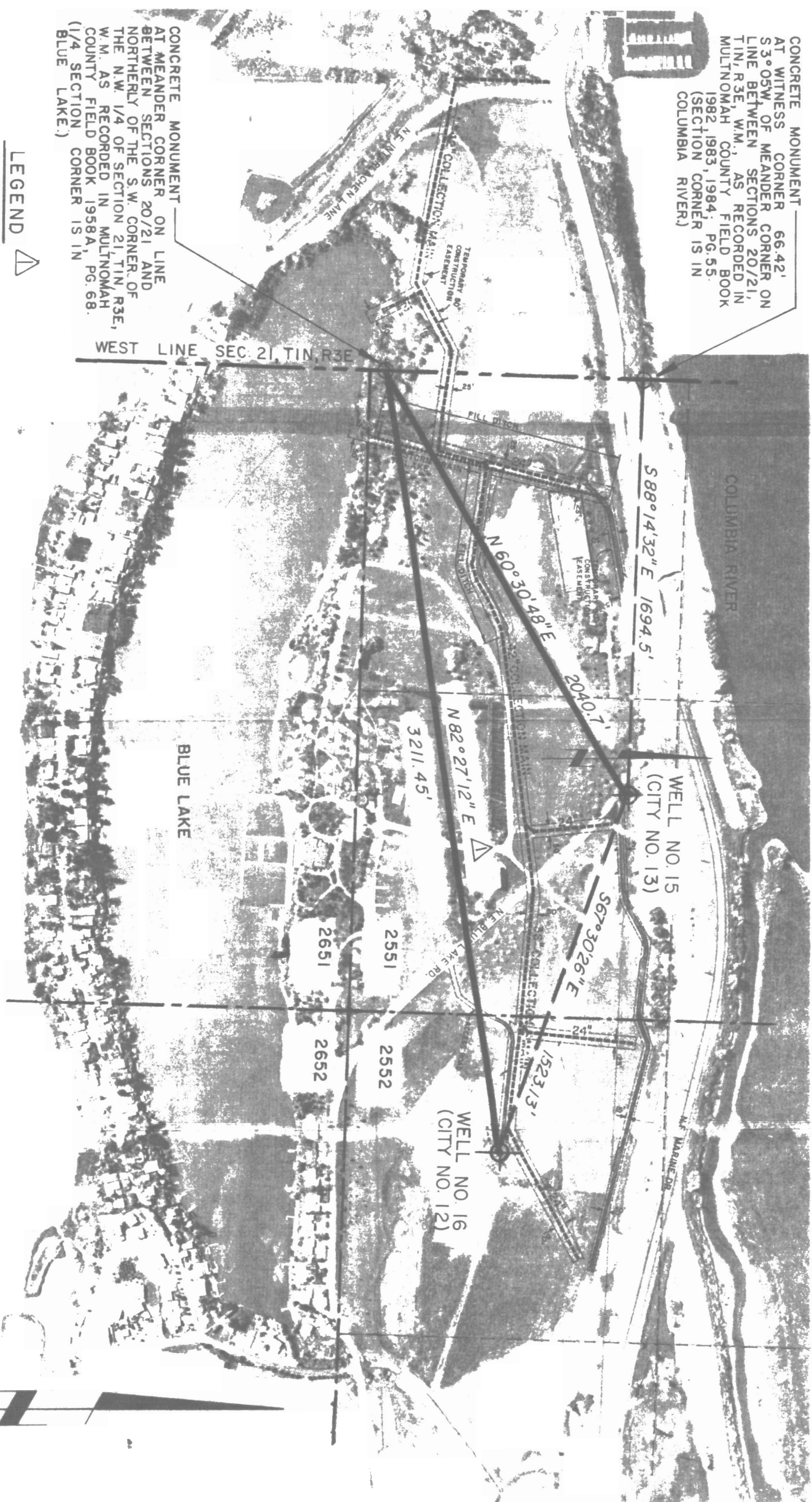
2551,

2552

Designed
 RER

Drawn
 GEO

PROJ 3900



RECEIVED
 JAN 17 1985
 WATER RESOURCES DEPT
 SALEM, OREGON