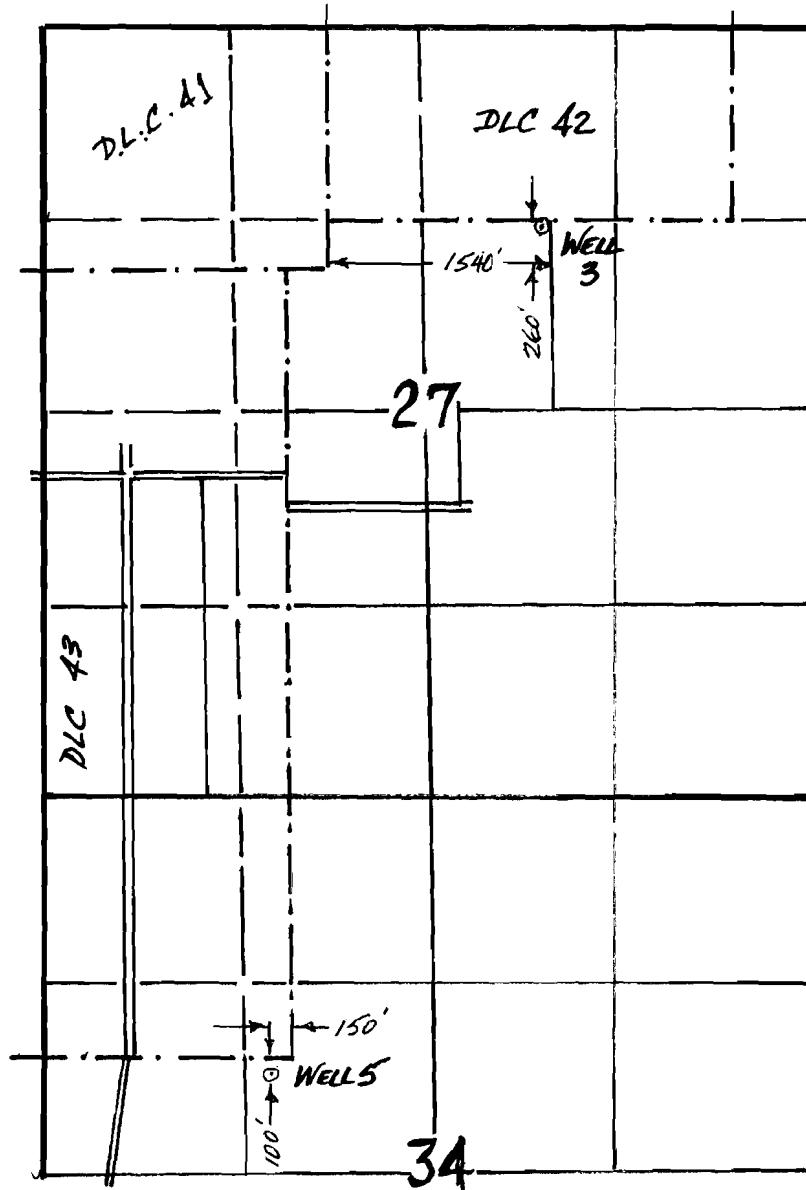


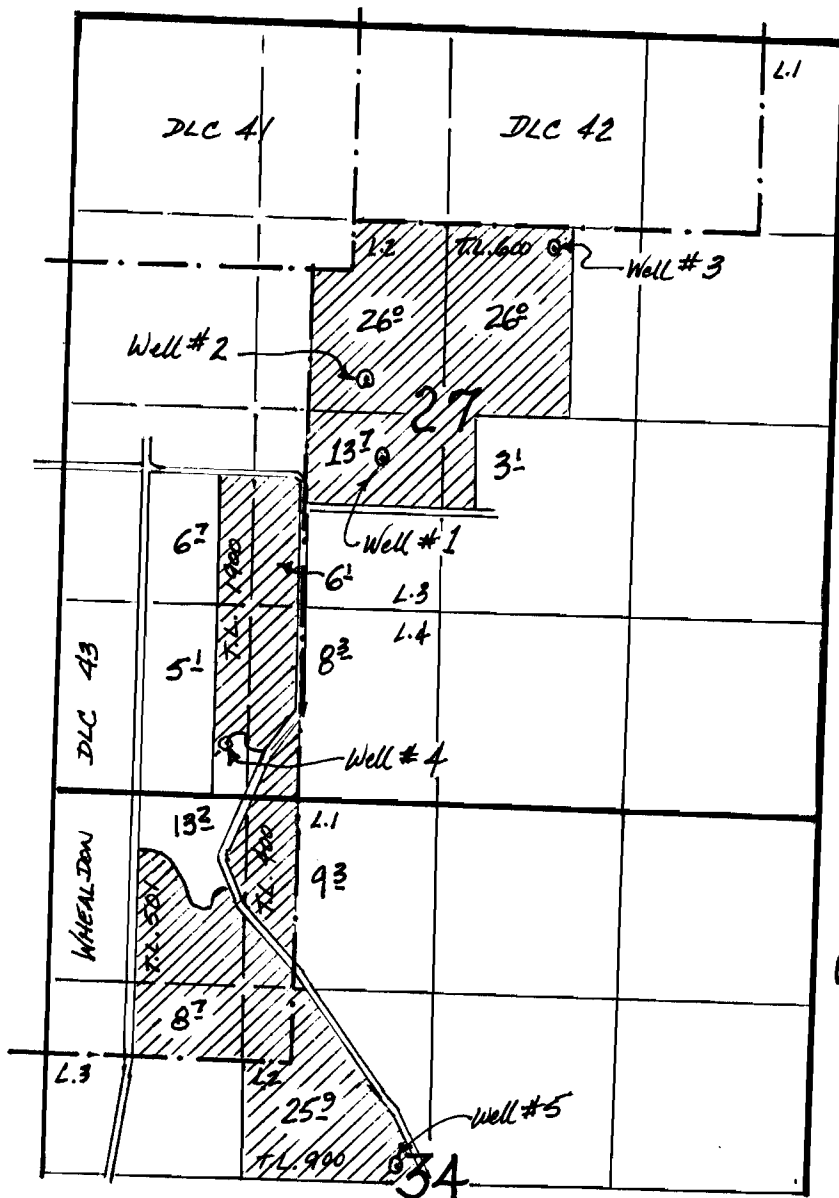
T.4S.,R.1E.,W.M.



AMENDED WELL LOCATIONS
WICHITA NURSERY APPLICATION G-15966

08/2003 *AK*

T.4S, R.1E, W.M.



App # G-159666
Permit #

APPLICATION MAP:

WICHITA NURSERY

MAR 27 2003

- WELL LOCATIONS:
- #1 - 2460' N. & 2700' E.;
 - #2 - 2900' N. & 2180' E.;
 - #3 - 3860' N. & 3350' E.;
 - #4 - 340' N. & 1170' E.;
 - #5 - 2500' S. & 2460' E.;
- All from the SW corner, Section 27

02/2005 *[Signature]*