

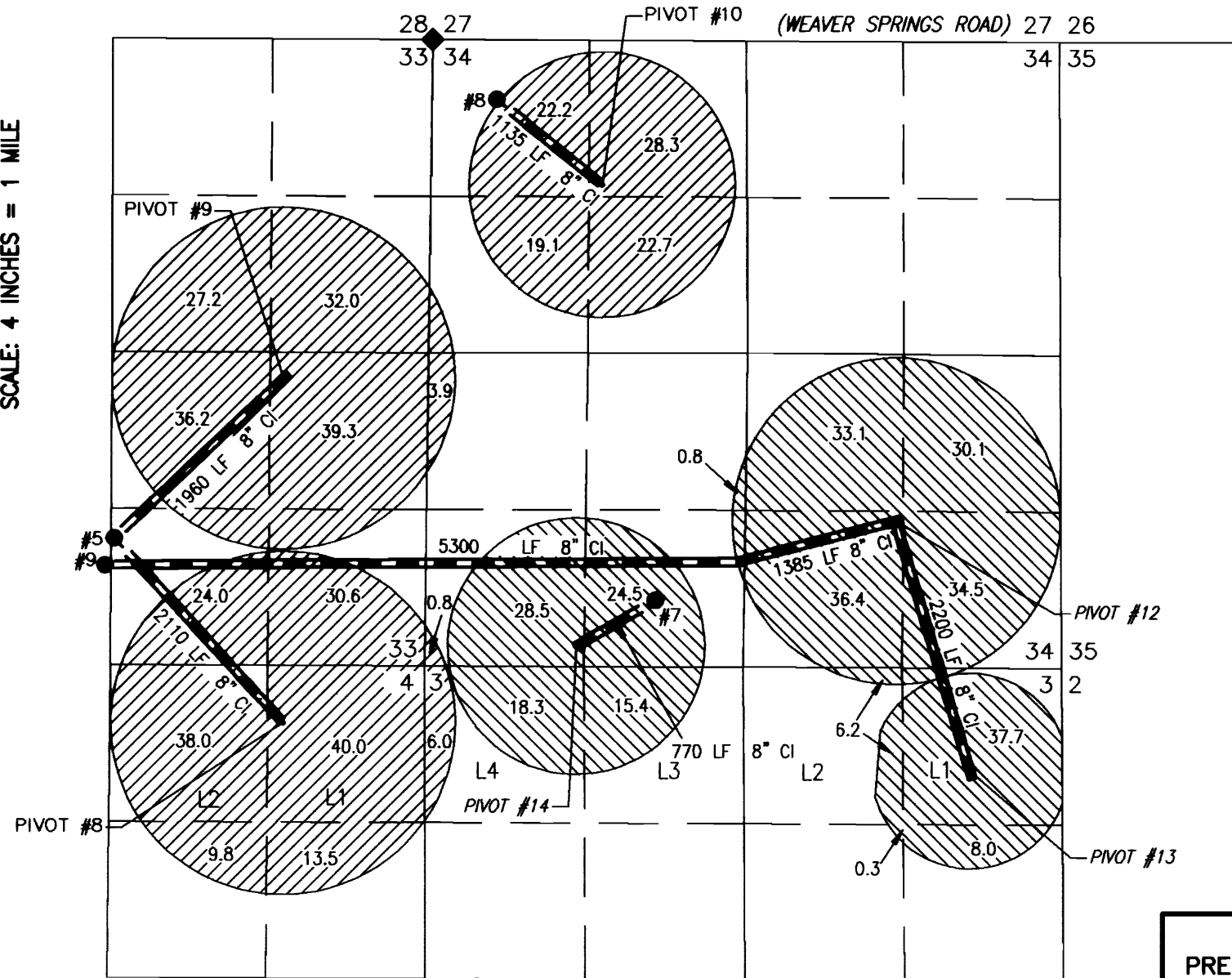
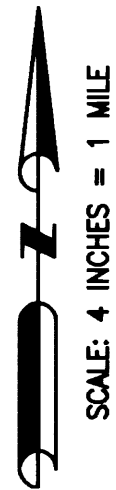
FINAL PROOF MAP

TO SHOW PLACES OF USE AND
POINTS OF APPROPRIATION
FOR APPLICATIONS G-16460 & G-16626
RATTLESNAKE CREEK LAND & CATTLE, LLC

TOWNSHIP 25 SOUTH, RANGE 30 EAST, SECTIONS 33 & 34, W.M.
TAX LOTS: 2002, 2500, 3600, & 3700 HARNEY COUNTY, OREGON &
TOWNSHIP 26 SOUTH, RANGE 30 EAST, SECTIONS 3 & 4, W.M.
TAX LOT: 800 HARNEY COUNTY, OREGON

RECEIVED

WATER RESOURCES DEPT
SALEM, OREGON



BURIED 8 OR 10 INCH STEEL PIPE

- 393.6 ACRES PRIMARY IRRIGATION FROM WELLS 5 & 8, G-16165, AS SHOWN
- 273.8 ACRES PRIMARY IRRIGATION FROM WELLS 7 & 9, G-16150, AS SHOWN

- #5
WELL #5 (HARN 51148) PERMIT: G-16165
4195' SOUTH & 2672' WEST FROM THE NE
CORNER SECTION 33
- #7
WELL #7 (HARN 51272) PERMIT: G-16150
4725' SOUTH & 1877' EAST FROM THE NW
CORNER SECTION 34.
- #8
WELL #8 (HARN 1088) PERMIT: G-16165
502' SOUTH & 536' EAST FROM THE NW CORNER
SECTION 34.
- #9
WELL #9 (HARN 51448) PERMIT: G-16165
4423' SOUTH & 2750' WEST FROM THE NE
CORNER SECTION 33.



RENEWAL DATE: 12/31/2012

THIS MAP IS FOR THE PURPOSE OF LOCATING A WATER
RIGHT ONLY AND HAS NO INTENT TO PROVIDE LEGAL
DIMENSIONS OR THE LOCATION OF PROPERTY LINES

<p>PREPARED FOR: ANDY ROOT 524 HIGHWAY 20 N HINES, OR 97738</p>	<p>PREPARED BY: ALL POINTS ENGINEERING AND SURVEYING, INC. P.O. BOX 767 (CRR) TERREBONNE, OR 97760 (541) 548-5833 www.APEandS.com</p>
-----------------------------------------------------------------------------	-----------------------------------------------------------------------------------------------------------------------------------------------------------------------------------------