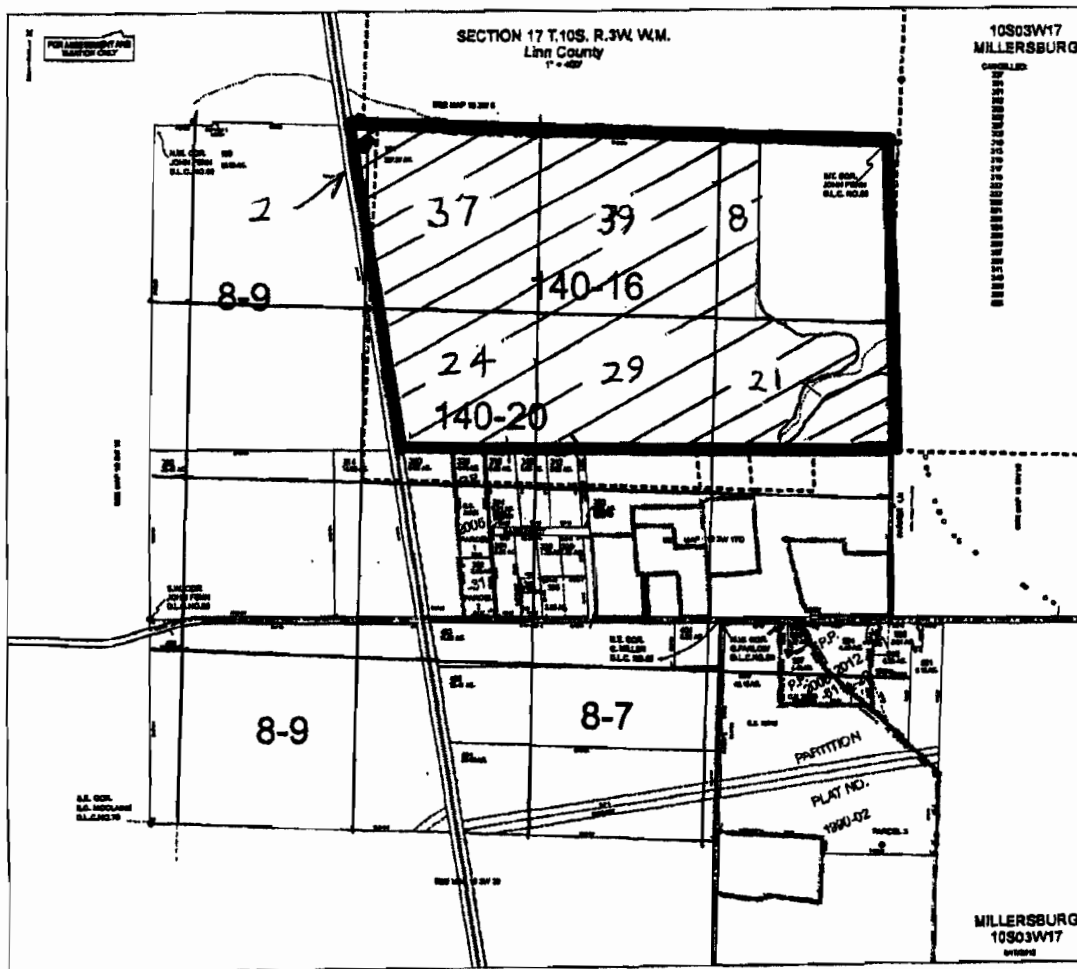


Revised Map

G-17586 Amended by MM
WM DZ



SCALE 1"=1320'
POD 1320' EAST & 150' SOUTH
FROM NW CORNER SECTION 17

RECEIVED

SEP 27 2012

WATER RESOURCES DEPT
SALEM, OREGON

RECEIVED BY OWRD

OCT 30 2013

SALEM, OR