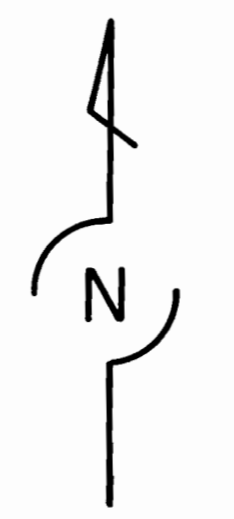
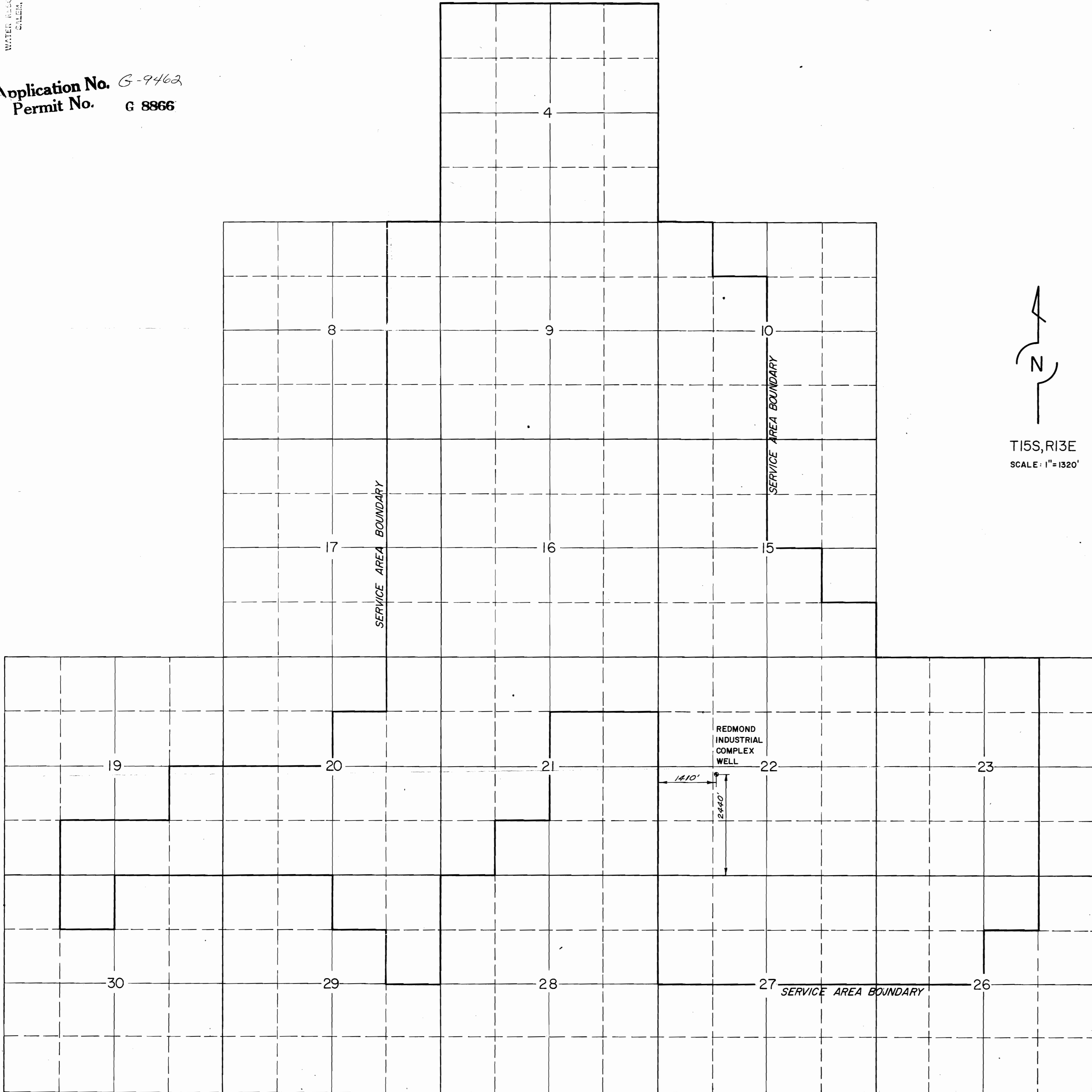


RECEIVED
MAY 14 1979
WATER RESOURCES DEPT
SALEM, OREGON

Application No. G-9462
Permit No. G 8866



T15S, R13E
SCALE: 1" = 1320'

Design By	REVISIONS			Date
	No.	By		
Drawn By MM				
Checked By G. HALL				
Approved By				
Date 10-19-79				
Scale AS SHOWN				
Project No. 0106.091.B2				
Work Order No.				

REDMOND INDUSTRIAL
COMPLEX WELL

WATER RIGHTS APPLICATION
SERVICE AREA, LOCATION MAP

Century West Engineering Corporation

Bend,
Oregon