

Exhibit G

Project Maps



- Legend**
- Project Boundary
 - Proposed Transmission Line
 - Proposed Access Roads
 - Proposed Penstock
 - Proposed Reservoir
 - Proposed Reservoir Berm Outer Slope
 - Proposed Powerhouse
 - Proposed Substation
 - Proposed Powerhouse Pad
 - Proposed Laydown Area
 - Public Lands
 - Bureau of Land Management
 - Bureau of Reclamation
 - US Fish and Wildlife Service
 - US Forest Service
 - USDA Wetlands Reserve Program
 - State Lands
 - Township/Range

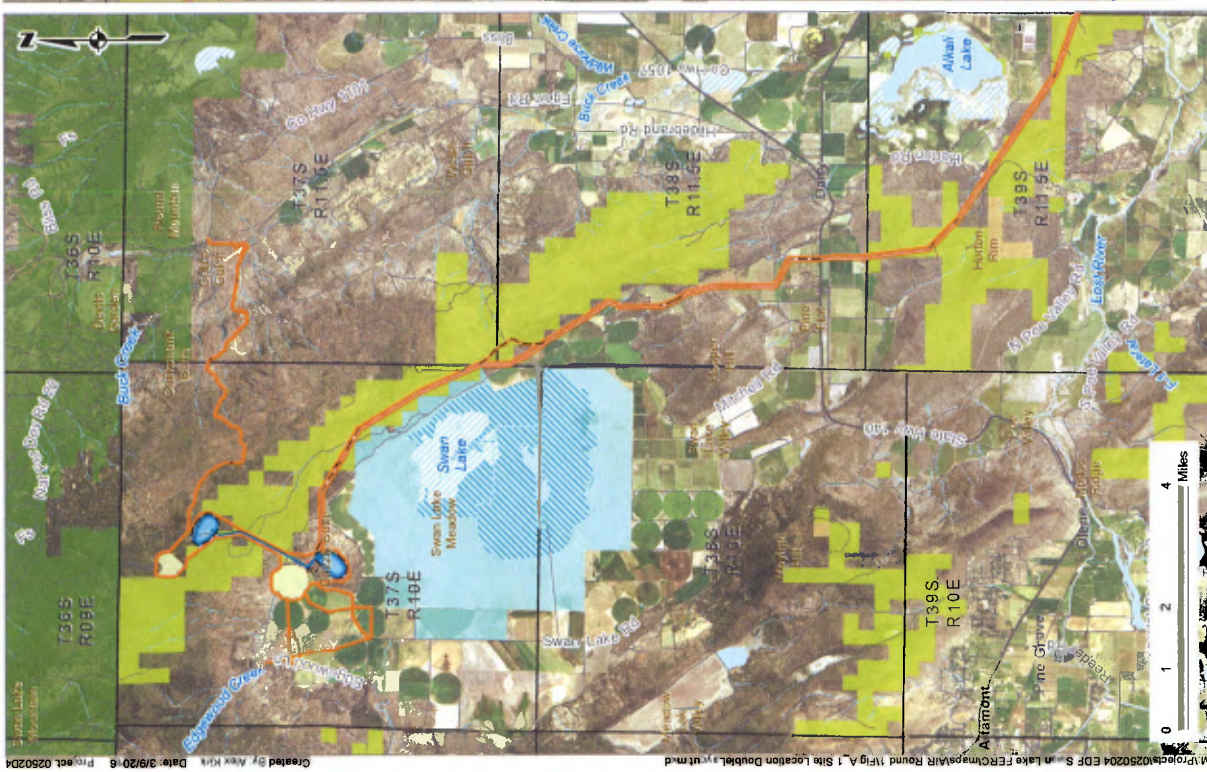
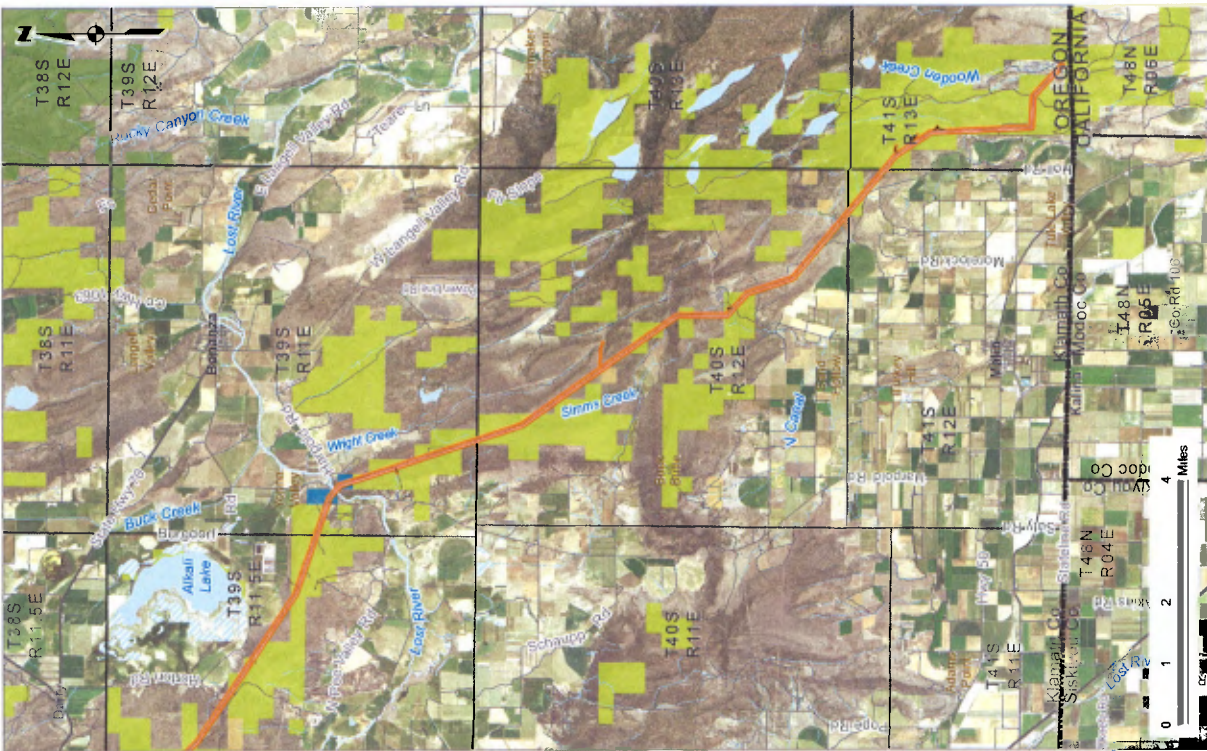


Figure A.1
Site Location
 Swan Lake North Pumped
 Storage Hydroelectric Project
 Final License Application
 EDF Renewable Energy
 Klamath Falls, Oregon

Environmental Resources Management
 1001 SW 5th St, Suite 1010
 Portland, Oregon 97204 ERM



- Legend**
- Project Boundary
 - Proposed Transmission Line
 - Proposed Access Roads
 - Proposed Penstock
 - Proposed Reservoir
 - Proposed Reservoir Berm Outer Slope
 - Proposed Substation
 - Proposed Powerhouse Pad
 - Proposed Laydown Area

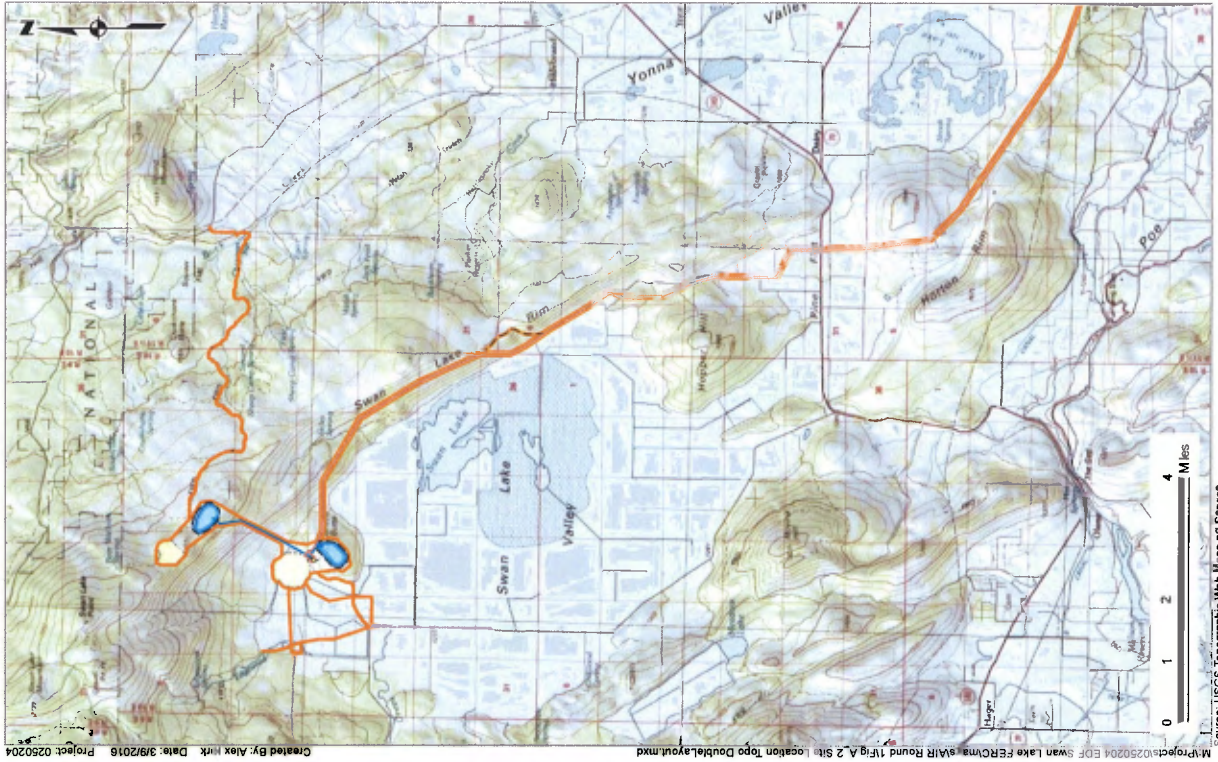
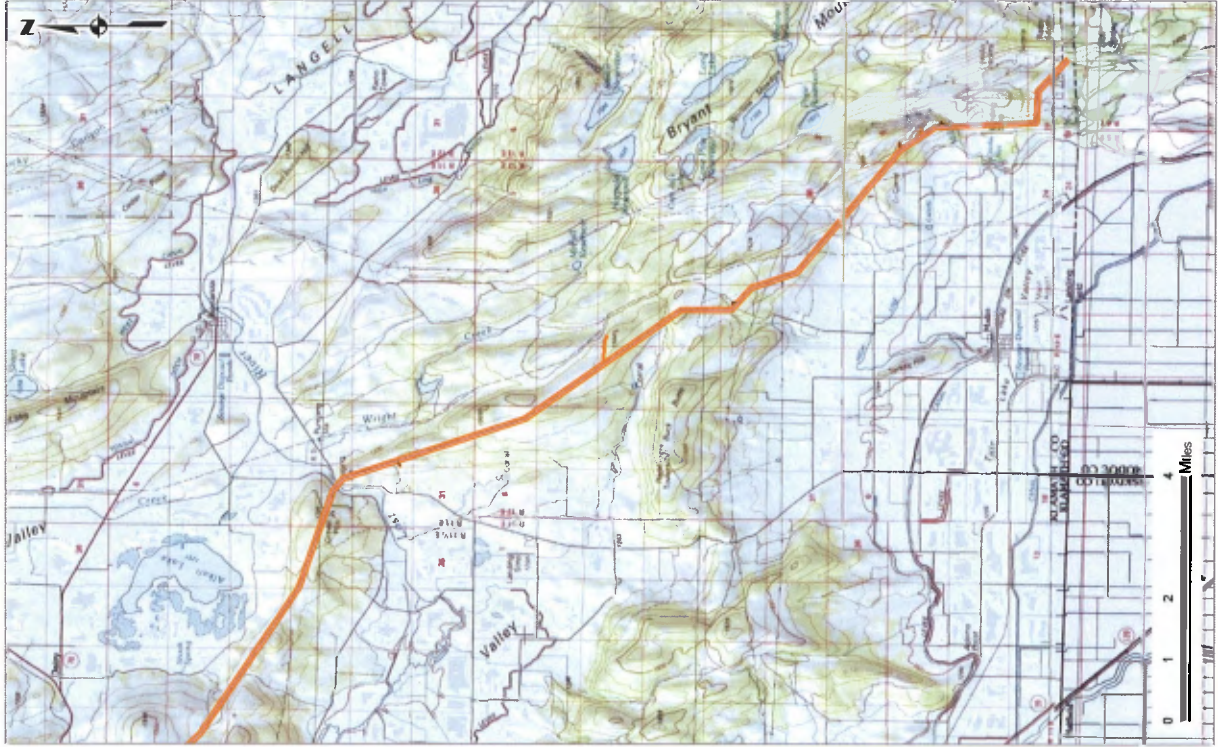
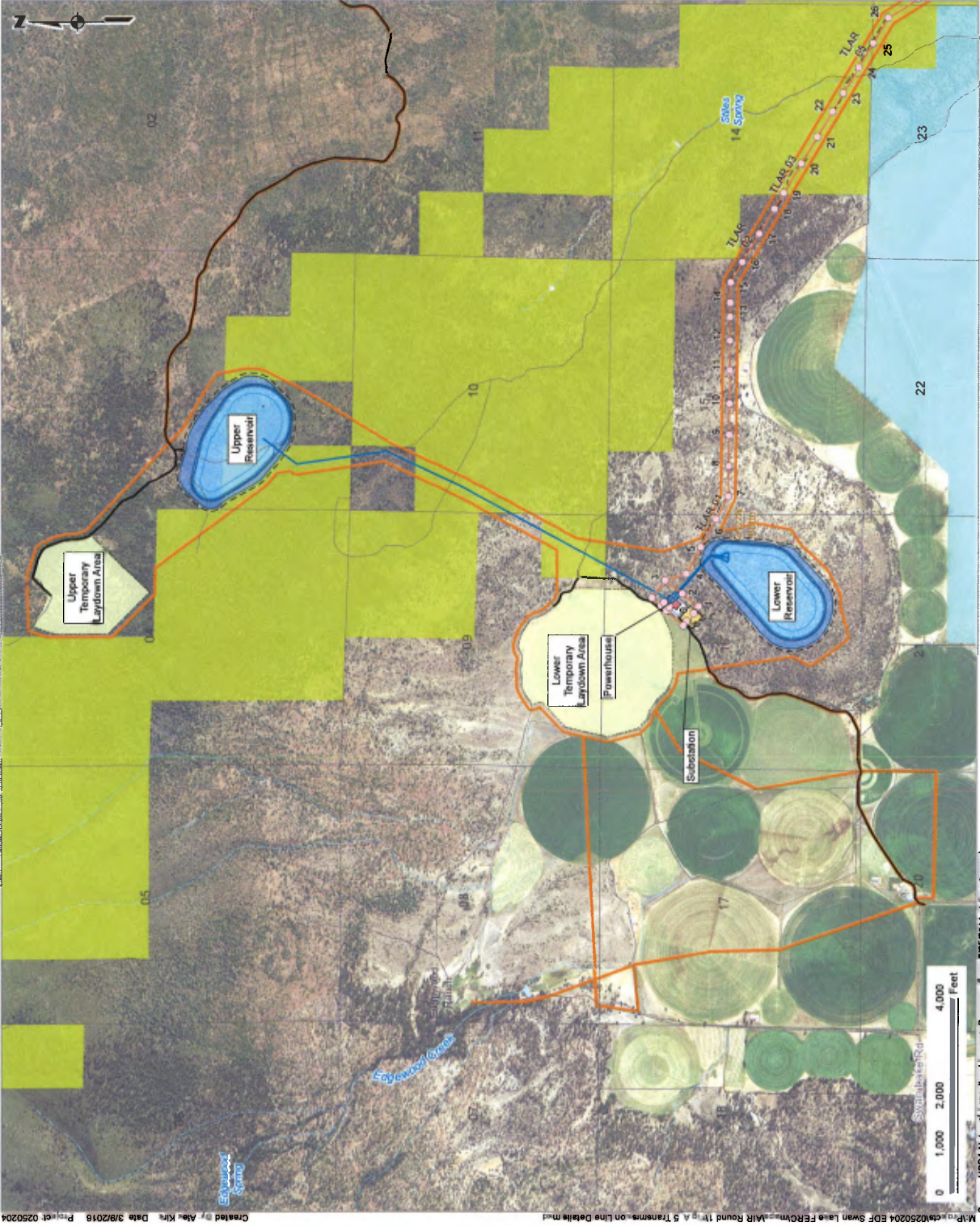


Figure A.2
 Site Location and
 USGS Topographic Map
 Swan Lake North Pumped
 Storage Hydroelectric Project
 Final License Application
 EDF Renewable Energy
 Klamath Falls, Oregon

Environmental Resources Management
 1001 SW 5th St, Suite 1010
 Portland, Oregon 97204
 ERM



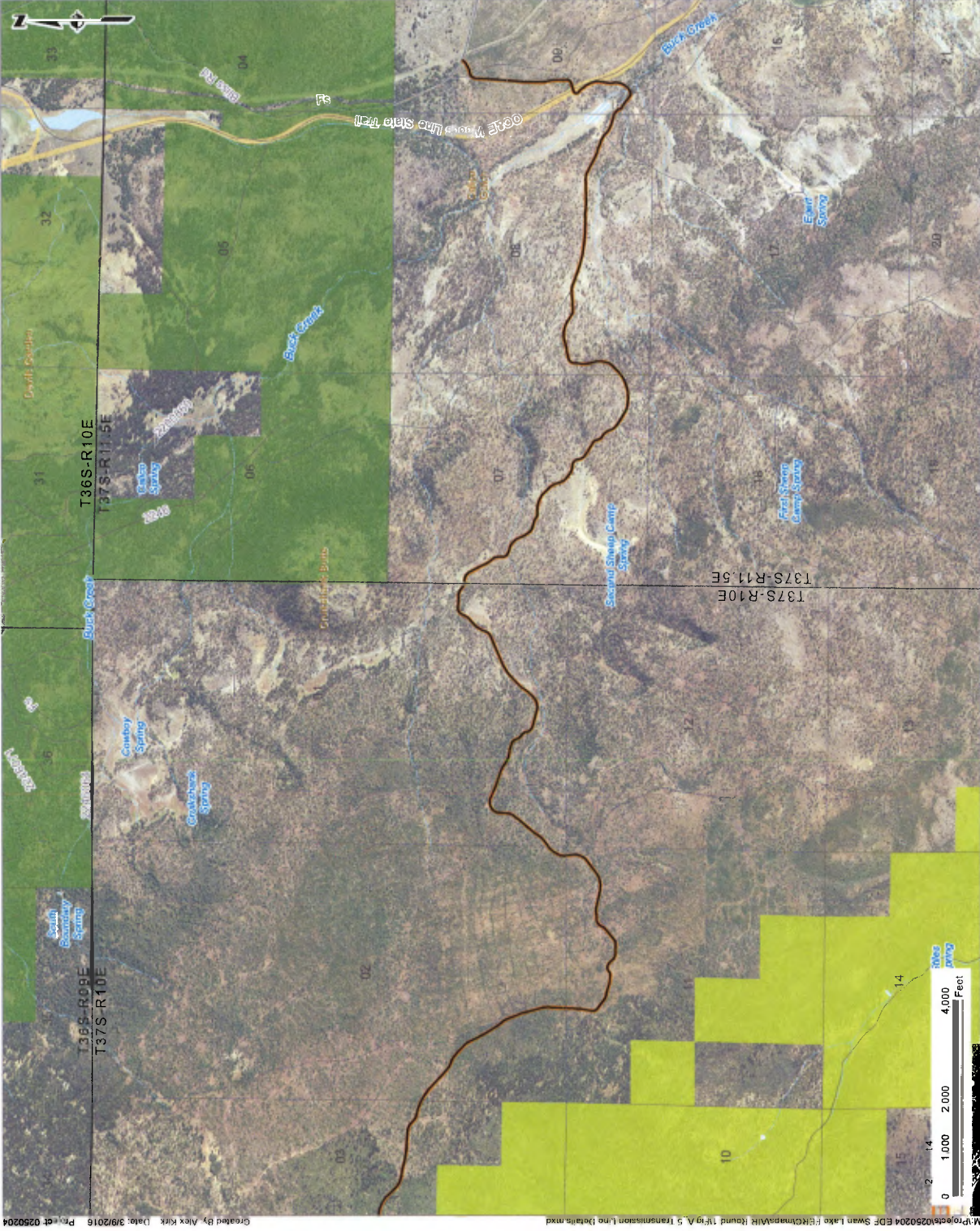
Legend

- Project Boundary
- Proposed Power Poles
- Proposed Transmission Line
- Proposed Penstock
- Proposed Access Roads
- Existing Roads
- Proposed Reservoir
- Proposed Reservoir Berm Outer Slope
- Proposed Powerhouse
- Proposed Substation
- Proposed Powerhouse Pad
- Proposed Laydown Area
- Public Lands
- Bureau of Land Management
- USDA Wetlands Reserve Program
- Township/Range
- Section
- Figure A.5 Sheets

Figure A.5-1
 Project Site Detail
 Reservoirs
 Swan Lake North Pumped
 Storage Hydroelectric Project
 Final License Application
 EDF Renewable Energy
 Klamath Falls, Oregon

Environmental Resources Management
 1001 SW 5th St, Suite 1010
 Portland, Oregon 97204 ERM

M:\proj\0250204 EDF Swan Lake North Pumped Storage Hydroelectric Project\A.5 Transm. on Line Details.mxd
 Created by Alex Kira Date 3/9/2018 Project 0250204
 Source USDA National Agricultural Inventory Program, flown 7/25/2014 at 1m per pixel



- Legend**
- Project Boundary
 - Proposed Power Poles
 - Proposed Transmission Line
 - Proposed Access Roads
 - Existing Roads
 - Public Lands
 - Bureau of Land Management
 - US Forest Service
 - State Lands
 - Township/Range
 - Section
 - Figure A 5 Sheets

Figure A.5-2
 Project Site Detail
 Upper Access Road
 Swan Lake North Pumped
 Storage Hydroelectric Project
 Final License Application
 EDF Renewable Energy
 Klamath Falls, Oregon
 Environmental Resources Management
 1001 SW 5th St, Suite 1010
 Portland, Oregon 97204 ERM



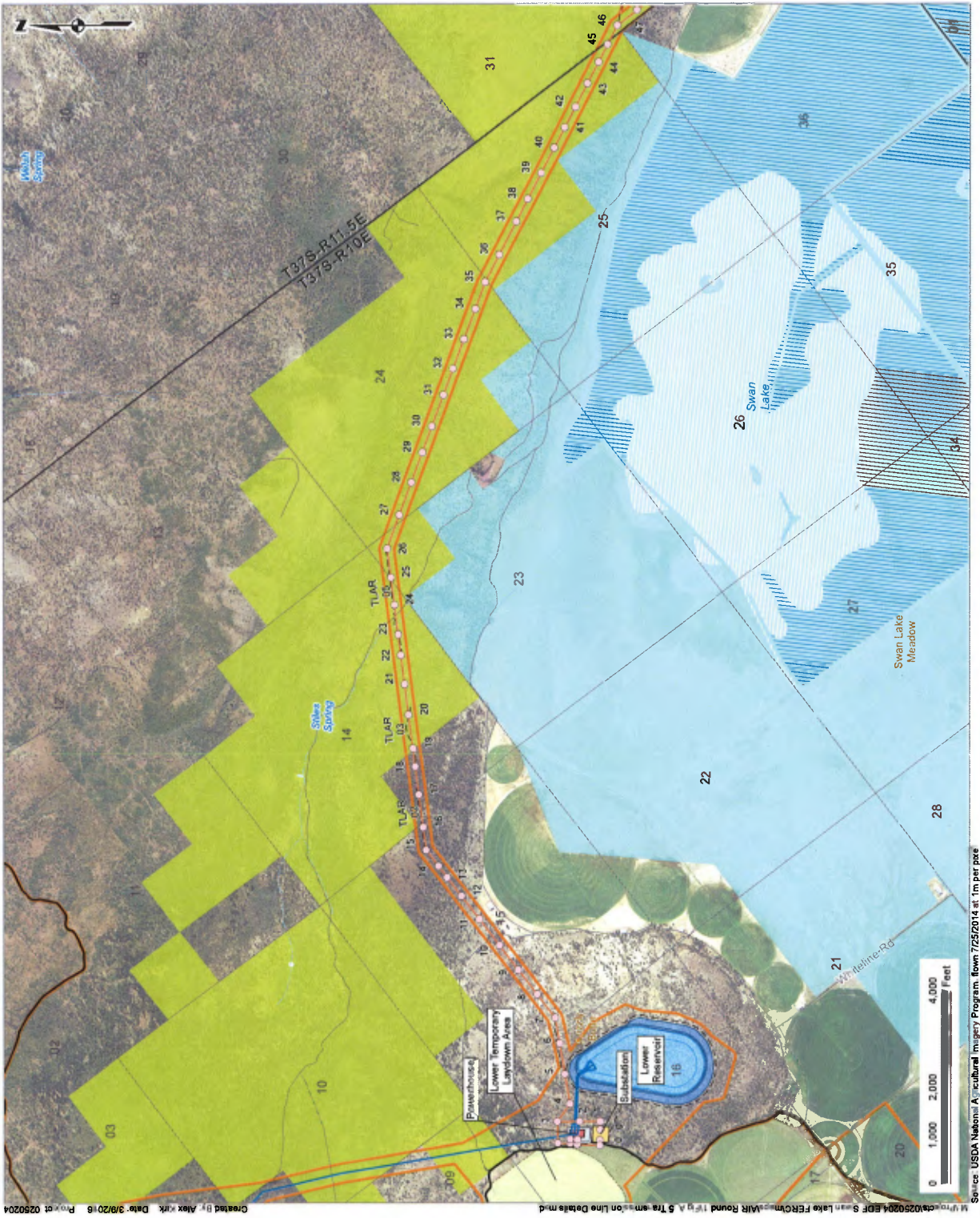
Legend

- Project Boundary
- Proposed Power Poles
- Proposed Transmission Line
- Proposed Penstock
- Proposed Access Roads
- Existing Roads
- Proposed Reservoir
- Proposed Reservoir Berm Outer Slope
- Proposed Substation
- Proposed Powerhouse Pad
- Proposed Laydown Area
- Public Lands
- Bureau of Land Management
- USDA Wetlands Reserve Program
- Township/Range
- Section
- Figure A.5 Sheets

Figure A.5-3
 Project Site Detail
 Transmission Line 1
 Swan Lake North Pumped
 Storage Hydroelectric Project
 Final License Application
 EDF Renewable Energy
 Klamath Falls, Oregon

Environmental Resources Management
 1001 SW 5th St, Suite 1010
 Portland, Oregon 97204 ERM

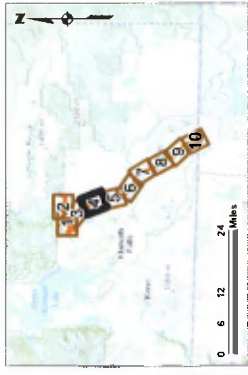
M:\projects\0250204 EDF Swan Lake FER\Champs\A\IR Round 1\Fig A.5 Transmission Line Details.mxd
 Created by Alex Kirk Date 3/9/2016 Project 0250204
 Source: USDA National Agricultural Imagery Program, flown 7/25/2014 1m per pixel



Legend

- Project Boundary
- Proposed Power Poles
- Proposed Transmission Line
- Proposed Penstock
- Proposed Access Roads
- Existing Roads
- Proposed Reservoir
- Proposed Reservoir Berm Outer Slope
- Proposed Powerhouse
- Proposed Substation
- Proposed Powerhouse Pad
- Proposed Laydown Area
- Public Lands
- Bureau of Land Management
- USDA Wetlands Reserve Program
- Township/Range
- Section
- Figure A.5 Sheets

Figure A.5-3
 Project Site Detail
 Transmission Line 1
 Swan Lake North Pumped
 Storage Hydroelectric Project
 Final License Application
 EDF Renewable Energy
 Klamath Falls, Oregon
 Environmental Resources Management
 1001 SW 5th St, Suite 1010
 Portland, Oregon 97204 ERM



- Legend**
- Project Boundary
 - Proposed Power Poles
 - Proposed Transmission Line
 - Proposed Access Roads
 - Public Lands
 - Bureau of Land Management
 - USDA Wetlands Reserve Program
 - Township/Range
 - Section
 - Figure A.5 Sheets

Figure A.5-4
 Project Site Detail
 Transmission Line 2
 Swan Lake North Pumped
 Storage Hydroelectric Project
 Final License Application
 EDF Renewable Energy
 Klamath Falls, Oregon

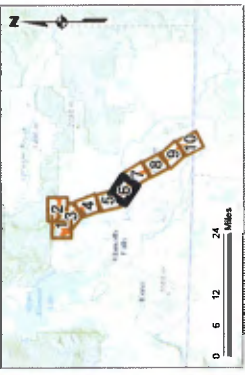
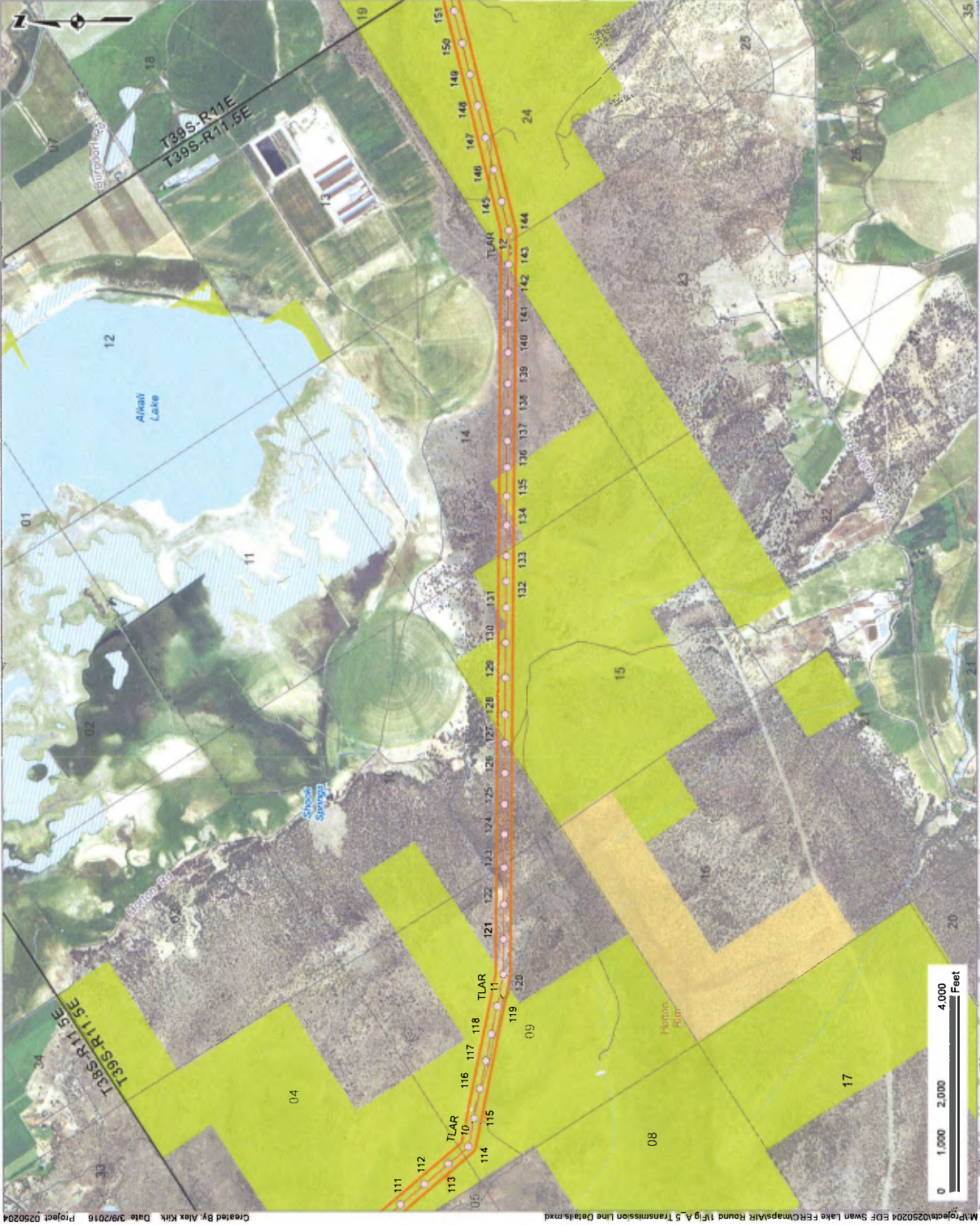
Environmental Resources Management
 1001 SW 5th St, Suite 1010
 Portland, Oregon 97204 ERM



- Legend**
- Project Boundary
 - Proposed Power Poles
 - Proposed Transmission Line
 - Proposed Access Roads
 - Bureau of Land Management
 - State Lands
 - Township/Range
 - Section
 - Figure A.5 Sheets

Figure A.5-5
 Project Site Detail
 Transmission Line 3
 Swan Lake North Pumped
 Storage Hydroelectric Project
 Final License Application
 EDF Renewable Energy
 Klamath Falls, Oregon

Environmental Resources Management
 1001 SW 5th St, Suite 1010
 Portland, Oregon 97204 ERM[®]



- Legend**
- Project Boundary
 - Proposed Power Poles
 - Proposed Transmission Line
 - Proposed Access Roads
 - Public Lands
 - Bureau of Land Management
 - State Lands
 - Township/Range
 - Section
 - Figure A.5 Sheets

Figure A.5-6
 Project Site Detail
 Transmission Line 4
 Swan Lake North Pumped
 Storage Hydroelectric Project
 Final License Application
 EDF Renewable Energy
 Klamath Falls, Oregon

Environmental Resources Management
 1001 SW 5th St, Suite 1010
 Portland, Oregon 97204 **ERM**



- Legend**
- Project Boundary
 - Proposed Power Poles
 - Proposed Transmission Line
 - Proposed Access Roads
 - Public Lands
 - Bureau of Land Management
 - Bureau of Reclamation
 - State Lands
 - Township/Range
 - Section
 - Figure A.5 Sheets

Figure A.5-7
 Project Site Detail
 Transmission Line 5
 Swan Lake North Pumped
 Storage Hydroelectric Project
 Final License Application
 EDF Renewable Energy
 Klamath Falls, Oregon
 Environmental Resources Management
 1001 SW 5th St, Suite 1010
 Portland, Oregon 97204 ERM



- Legend**
- Project Boundary
 - Proposed Power Poles
 - Proposed Transmission Line
 - Proposed Access Roads
 - Existing Roads
 - Public Lands
 - Bureau of Land Management
 - State Lands
 - Township / Range
 - Section
 - Figure A.5 Sheets

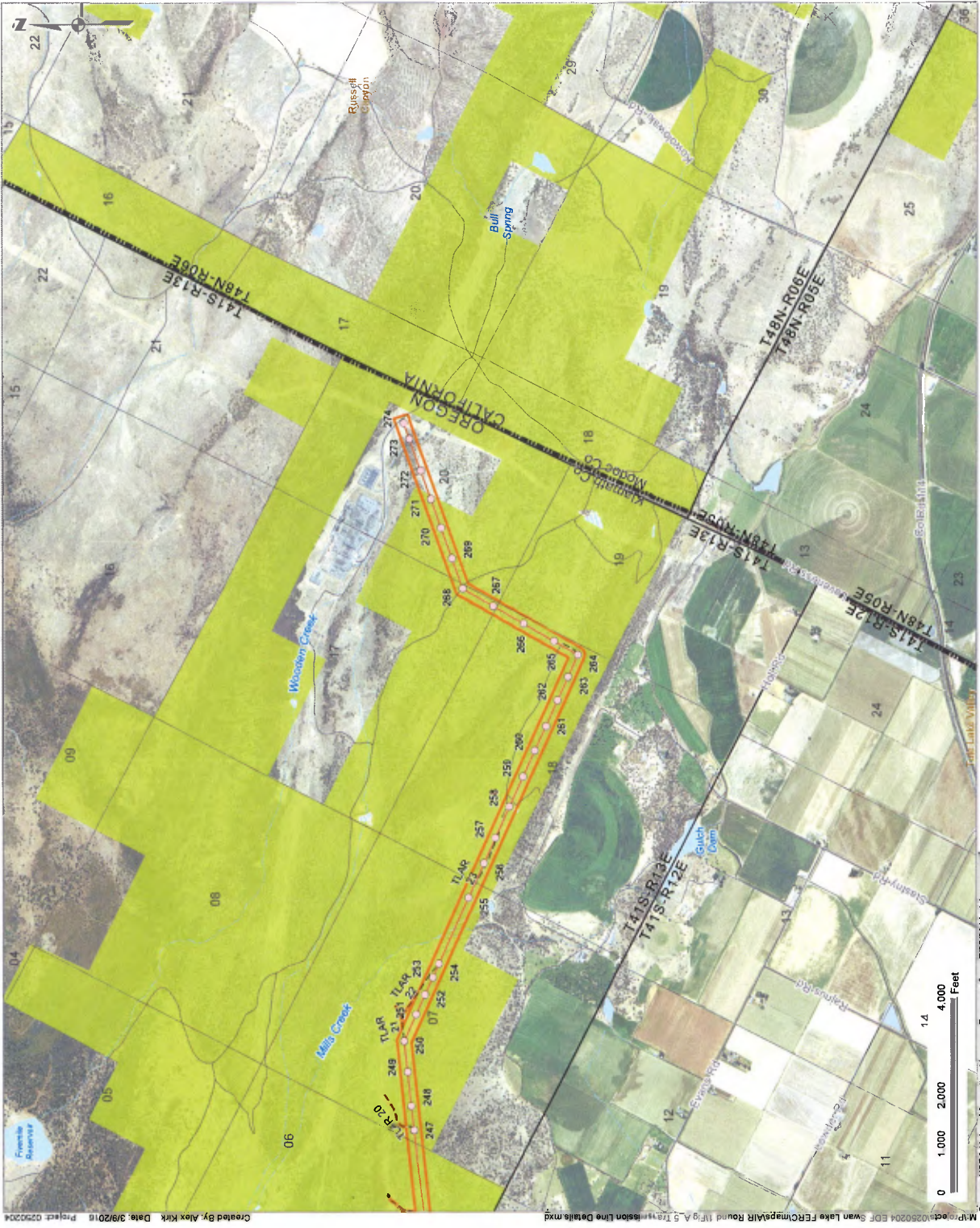
Figure A.5-8
 Project Site Detail
 Transmission Line 6
 Swan Lake North Pumped
 Storage Hydroelectric Project
 Final License Application
 EDF Renewable Energy
 Klamath Falls, Oregon
 Environmental Resources Management
 1001 SW 5th St, Suite 1010
 Portland, Oregon 97204 ERM



Legend

- Project Boundary
- Proposed Power Poles
- Proposed Transmission Line
- Proposed Access Roads
- Public Lands
- Bureau of Land Management
- State Lands
- Township/Range
- Section
- Figure A.5 Sheets

Figure A.5-9
 Project Site Detail
 Transmission Line 7
 Swan Lake North Pumped
 Storage Hydroelectric Project
 Final License Application
 EDF Renewable Energy
 Klamath Falls, Oregon
 Environmental Resources Management
 1001 SW 5th St, Suite 1010
 Portland, Oregon 97204 ERM.



- Legend**
- Project Boundary
 - Proposed Power Poles
 - Proposed Transmission Line
 - Proposed Access Roads
 - Public Lands
 - Bureau of Land Management
 - Township/Range
 - Section
 - Figure A.5 Sheets

Figure A.5-10
 Project Site Detail
 Transmission Line 8
 Swan Lake North Pumped
 Storage Hydroelectric Project
 Final License Application
 EDF Renewable Energy
 Klamath Falls, Oregon

Environmental Resources Management
 1001 SW 5th St, Suite 1010
 Portland, Oregon 97204 ERM.

