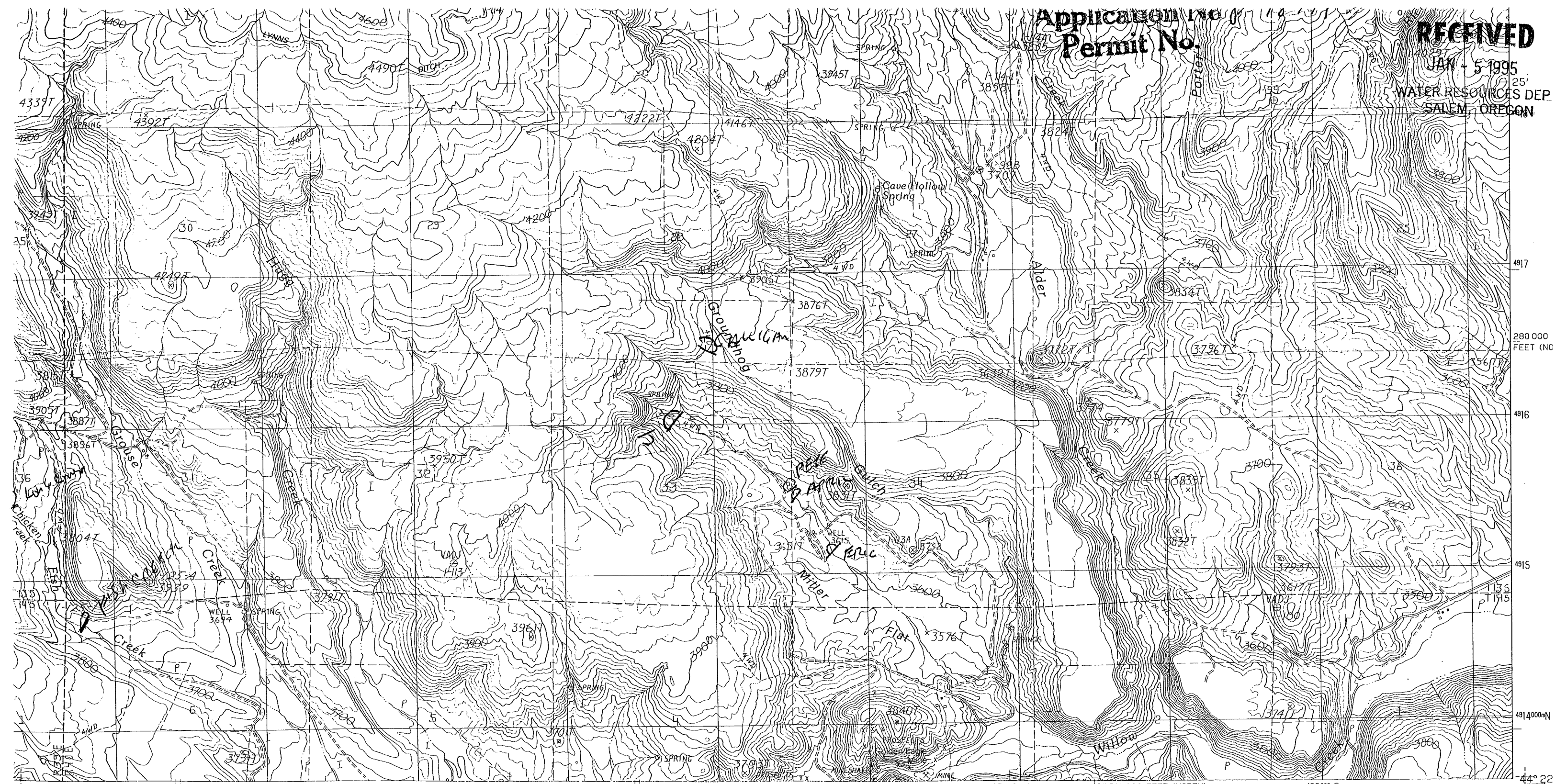


Application No. 97908
Permit No.

RECEIVED

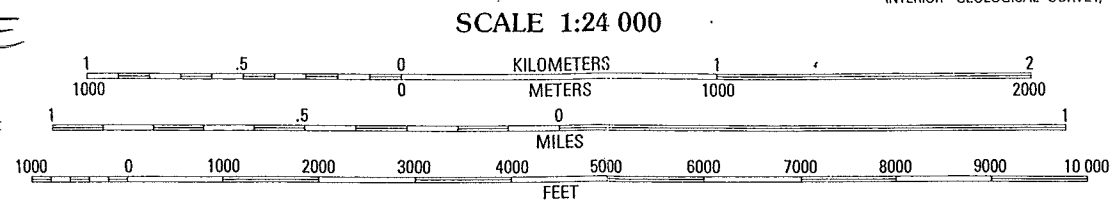
JAN - 5 1995
25'
WATER RESOURCES DEP
SALEM, OREGON



PRODUCED BY THE UNITED STATES GEOLOGICAL SURVEY
BY.....USGS AND NOS/NOAA
FROM AERIAL PHOTOGRAPHS TAKEN.....1960
FROM AERIAL PHOTOGRAPHS TAKEN.....1985
CHECKED.....1987. MAP EDITED.....1990
PROJECTION.....LAMBERT CONFORMAL CONIC
SCALE.....1:24,000
GRID.....1:250,000
DATUM.....NATIONAL GEODETIC DATUM OF 1929
PROJECTION.....1927 NORTH AMERICAN DATUM
ON THE PREDICTED NORTH AMERICAN DATUM OF 1983,
THE PROJECTION LINES AS SHOWN BY DASHED CORNER TICKS
ARE NORTH AND 81 METERS EAST
MAY BE PRIVATE INHOLDINGS WITHIN THE BOUNDARIES OF ANY

T 135 R 40 E
T 145 R 40 E

PROVISIONAL MAP
Produced from original
manuscript drawings. Informa-
tion shown as of date of



SCALE 1:24 000
CONTOUR INTERVAL 20 FEET
SUPPLEMENTARY CONTOUR INTERVAL 10 FEET
To convert meters to feet multiply by 3.2808
To convert feet to meters multiply by .3048

THIS MAP COMPLIES WITH NATIONAL MAP ACCURACY STANDARDS
FOR SALE BY U. S. GEOLOGICAL SURVEY

OREGON
IRONSIDE ORE
QUADRANGLE LOCATION
97908

1	2	3	1 Brannan Gulch
			2 Dooley Mountain
			3 French Gulch
4		5	4 Devils Heel
			5 Bridgeport
			6 Ironside
6	7	8	7 Cow Valley West
			8 Cow Valley East

LEGEND
Improved Road.....
Unimproved Road.....
Trail.....
Interstate Route
State Route

RECEIVED
JAN 3 1995
WATER RESOURCES DEPT.
EASTERN REGION

WENDT BUTTE, OREGON
PROVISIONAL EDITION 1990