

SEC.10 T.36S. R.1W. W.M.  
JACKSON COUNTY

36 1W 10  
EAGLE POINT

IMPORTANT  
THIS MAP FOR ASSESSMENT  
AND TAXATION PURPOSES  
ONLY

SCALE: 1 INCH = 400 FEET

SEE MAP 36 1W 3C

MAP No. 141

RECEIVED

JAN 27 1997

WATER RESOURCES DEPT.  
SALEM, OREGON

CANCELLED TAX  
LOT NUMBERS:

508N, 512N	ADDED TO	511N
1101	:	1201
1201	:	1700
361W15-701	:	1400

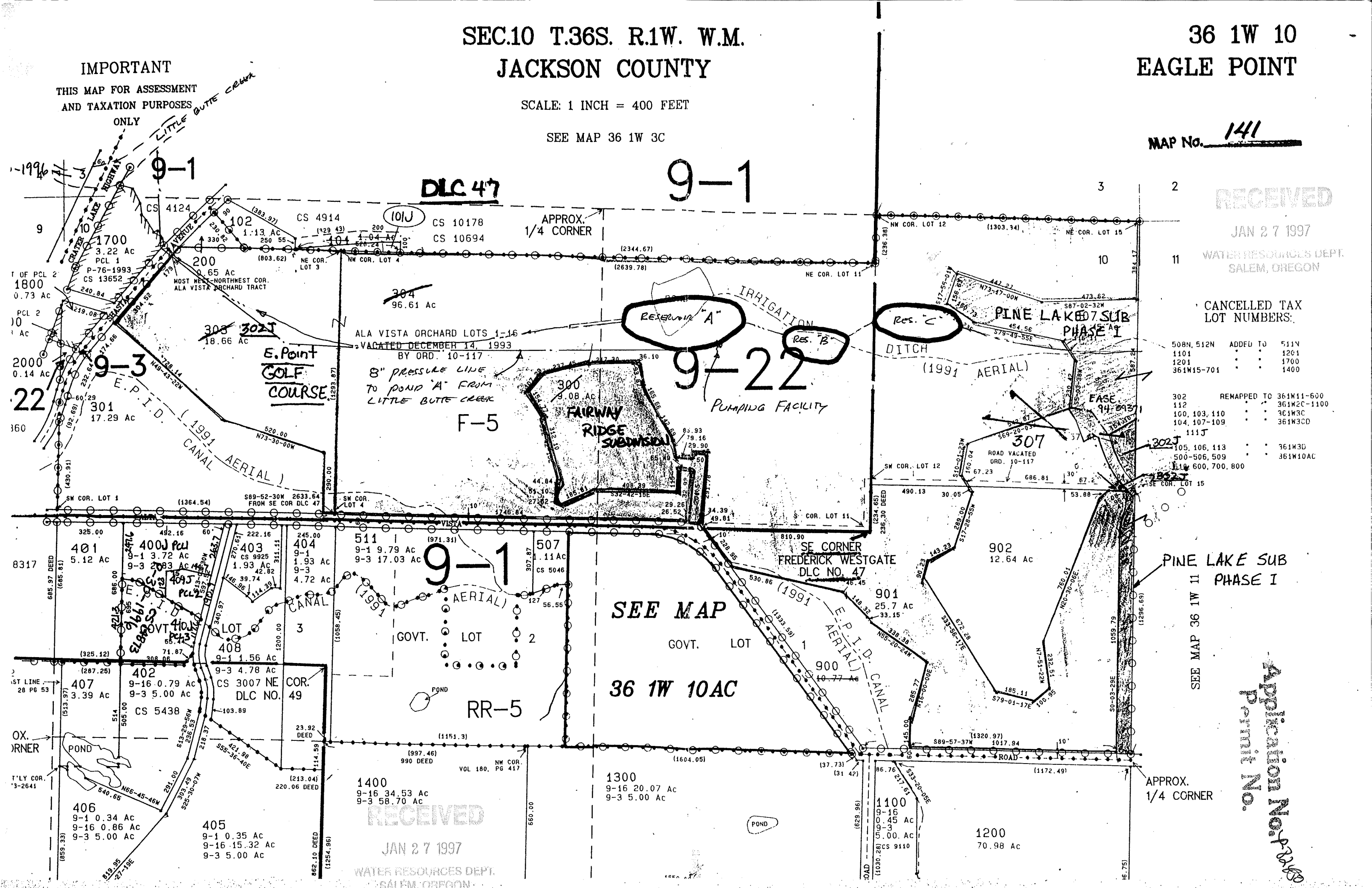
302	REMAPPED TO	361W11-600
112	:	361W2C-1100
100, 103, 110	:	361W3C
104, 107-109	:	361W3CD
111J	:	
105, 106, 113	:	361W3D
500-506, 509	:	361W10AC
510, 600, 700, 800	:	

PINE LAKE SUB  
PHASE I

SEE MAP 36 1W 11

Application No. 2200  
Permit No.

APPROX.  
1/4 CORNER



RECEIVED

JAN 27 1997

WATER RESOURCES DEPT.  
SALEM, OREGON

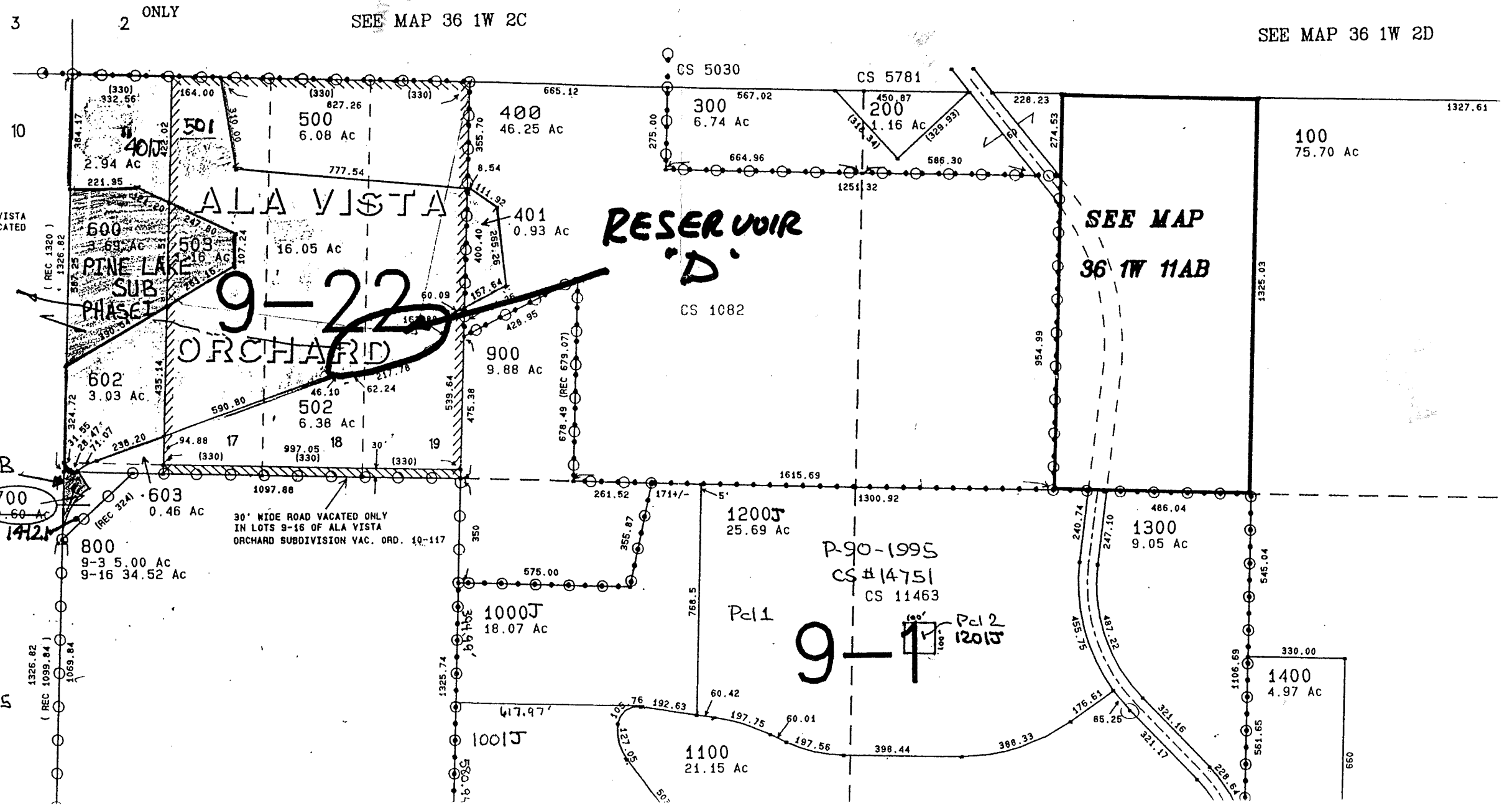
SECTION 11 T.36S. R.1W. W.M.  
JACKSON COUNTY

POST  
Run II  
when se

IMPORTANT  
THIS MAP FOR ASSESSMENT  
AND TAXATION PURPOSES

SCALE: 1 INCH = 400 FEET

RECEIVED  
JAN 27 1997  
WATER RESOURCES DEPT.  
SALEM, OREGON



NOTE: LOTS 1-16, ALA VISTA  
ORCHARD SUBDIVISION VACATED  
ORD. 10-117

PINE LAKE SUB  
PHASE I

30' WIDE ROAD VACATED ONLY  
IN LOTS 9-16 OF ALA VISTA  
ORCHARD SUBDIVISION VAC. ORD. 10-117

14751-1 } P-90-1995  
14751-2 }  
[96-33294] L.L.A  
[96-33293] L.L.A

9-22

9-1

P-90-1995  
CS #14751  
CS 11463

SEE MAP  
36 1W 11AB

SEE MAP 36 1W 2C

SEE MAP 36 1W 2D