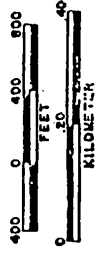


Application No. R-84354
Permit No. R-84353

SCALE 1:9600



RECEIVED BY OWRD

FEB 20 2015

SALEM, OR

SEC MAP NO 9 5 2

RECEIVED
MAR - 1 2000
WATER RESOURCES DEPT
SALEM, OR

SCALE 1" = 800'

POND #2

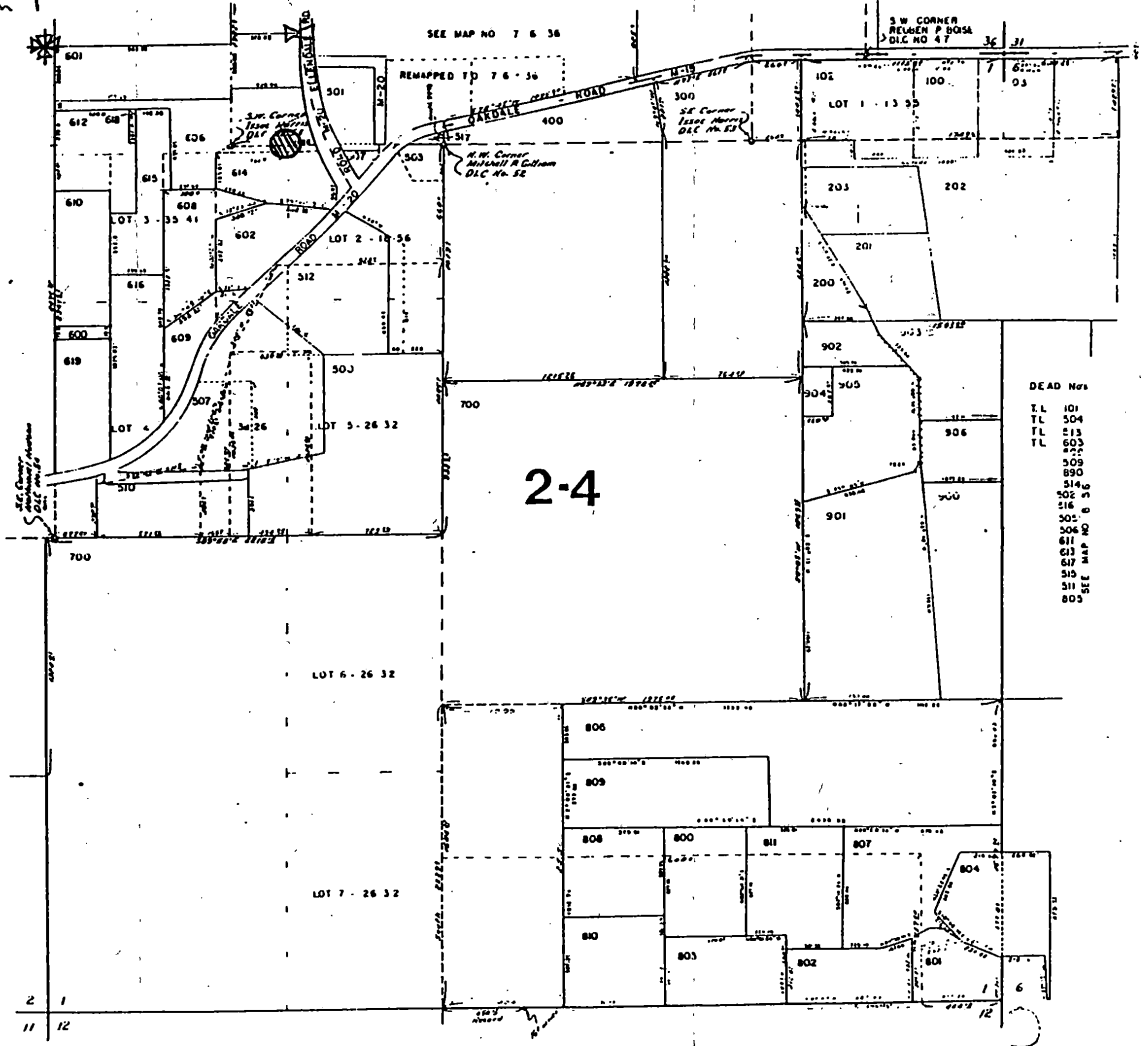
P.O.D Located
540' S + 1160' W of NW Corner
+ section 1

SEC. 1 T8SR6WWM
POLK COUNTY

SCALE 1" = 400'

- Proposed place of use
- section corner
- Quarter corner

8 6 1



DEAD Nos

TL	101
TL	104
TL	113
TL	603
TL	605
TL	607
TL	608
TL	609
TL	610
TL	611
TL	612
TL	613
TL	614
TL	615
TL	616
TL	617
TL	618
TL	619
TL	620
TL	621
TL	622
TL	623
TL	624
TL	625
TL	626
TL	627
TL	628
TL	629
TL	630
TL	631
TL	632
TL	633
TL	634
TL	635
TL	636
TL	637
TL	638
TL	639
TL	640
TL	641
TL	642
TL	643
TL	644
TL	645
TL	646
TL	647
TL	648
TL	649
TL	650
TL	651
TL	652
TL	653
TL	654
TL	655
TL	656
TL	657
TL	658
TL	659
TL	660
TL	661
TL	662
TL	663
TL	664
TL	665
TL	666
TL	667
TL	668
TL	669
TL	670
TL	671
TL	672
TL	673
TL	674
TL	675
TL	676
TL	677
TL	678
TL	679
TL	680
TL	681
TL	682
TL	683
TL	684
TL	685
TL	686
TL	687
TL	688
TL	689
TL	690
TL	691
TL	692
TL	693
TL	694
TL	695
TL	696
TL	697
TL	698
TL	699
TL	700
TL	701
TL	702
TL	703
TL	704
TL	705
TL	706
TL	707
TL	708
TL	709
TL	710
TL	711
TL	712
TL	713
TL	714
TL	715
TL	716
TL	717
TL	718
TL	719
TL	720
TL	721
TL	722
TL	723
TL	724
TL	725
TL	726
TL	727
TL	728
TL	729
TL	730
TL	731
TL	732
TL	733
TL	734
TL	735
TL	736
TL	737
TL	738
TL	739
TL	740
TL	741
TL	742
TL	743
TL	744
TL	745
TL	746
TL	747
TL	748
TL	749
TL	750
TL	751
TL	752
TL	753
TL	754
TL	755
TL	756
TL	757
TL	758
TL	759
TL	760
TL	761
TL	762
TL	763
TL	764
TL	765
TL	766
TL	767
TL	768
TL	769
TL	770
TL	771
TL	772
TL	773
TL	774
TL	775
TL	776
TL	777
TL	778
TL	779
TL	780
TL	781
TL	782
TL	783
TL	784
TL	785
TL	786
TL	787
TL	788
TL	789
TL	790
TL	791
TL	792
TL	793
TL	794
TL	795
TL	796
TL	797
TL	798
TL	799
TL	800

Application # updated by Dept. Info/Wrd 5-24-16 / Measured distance directional added to 1160 East East 1160