

MAP IS MADE UP OF A NUMBER OF MAPS
VARIOUS SCALES WHICH HAVE BEEN
ALTERED TO A COMMON SCALE. IT IS NOT
AN OFFICIAL MAP OF THE STATE ENGINEER.

OF VARIOUS SCALES WHICH HAVE
ALTERED TO A COMMON SCALE. IT IS NOT
AN OFFICIAL MAP OF THE STATE ENGINEER.

28

33

34

1101

1100

487AC 14.68 AC

90

1201

73.29 AC

1001

157.97 AC

24.0 AC. 1916

24.0 AC. 1916

16.0 AC. 1862

16.0 AC. 1862

38.0 AC. 1862

38.0 AC. 1862

38.0 AC. 1862

38.0 AC. 1862

38.0 AC. 1862

APP No R87176

1340'

Karen's Pond

SUNW

SEW

6

RECEIVED

APR 23 2008

WATER RESOURCES DEPT
SALEM OREGON

C-16352
(Munger Cr.)
38.0 AC. 1862
Plan. 38.27 AC.

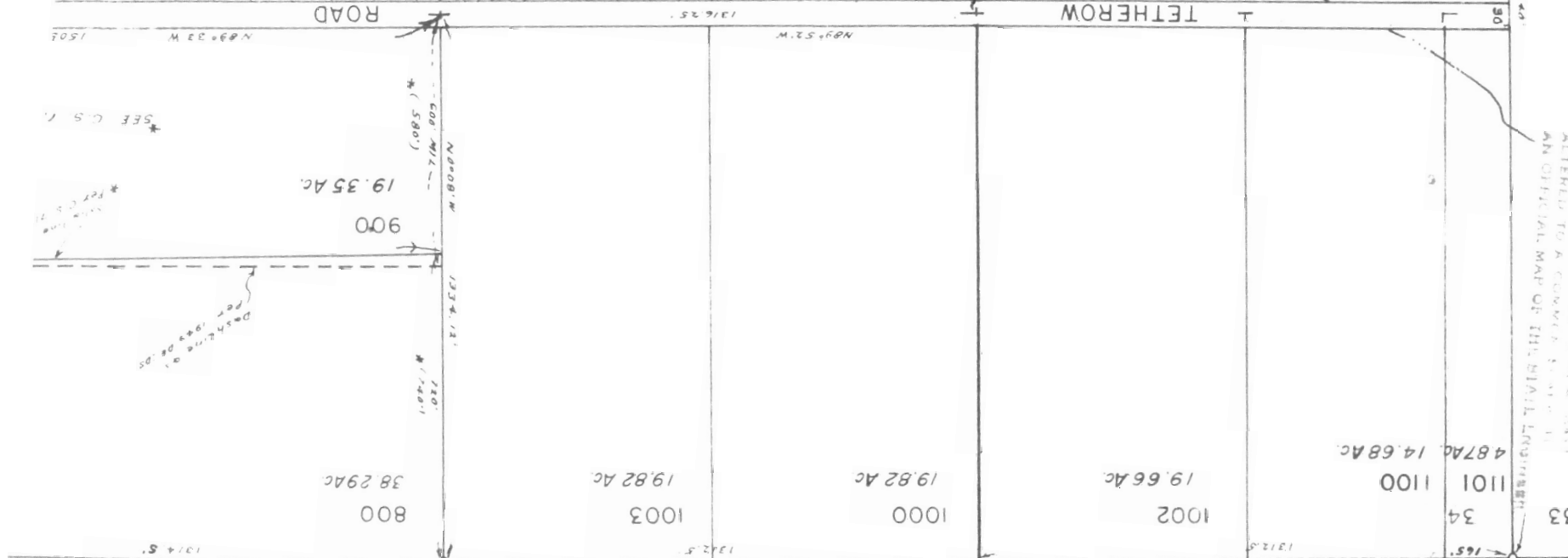
C-16352
(Munger Cr.)
16.0 AC. 1862
Plan. 15.2 AC.

C-16352
(Munger Cr.)
15.0 AC. 1862
Plan. 13.4 AC.

P-29225
(Supl. from Res.)
24.9 AC. 1963

C-16352
(Munger Cr.)
30.0 AC. 1862
Plan. 30.0 AC.

P-2938
(Munger Cr.)
24.0 AC. 1916
Plan. 24.25 AC.



SEE MAP 38 5 27

THIS MAP IS MADE UP OF A NUMBER OF MAPS
OF VARIOUS SCALES WHICH HAVE BEEN
ALTERED TO A COMMON SCALE. IT IS NOT
AN OFFICIAL MAP OF THE STATE ENGINEER.

Pond is 1340' east
and 400' north of
west corner.

1" = 400'

JOSEPHINE COUNTY

SECTION 34 T.38S. R.5W. W. M.

THIS MAP IS MADE UP OF A NUMBER
OF VARIOUS SCALES WHICH HAVE
ALTERED TO A COMMON SCALE. IT IS NOT
AN OFFICIAL MAP OF THE STATE ENGINEER.



1972
1972