

NW1/4 SE1/4 SEC.35 T.13S. R.31 E. W.M.

GRANT COUNTY

13 31 35DB
CANYON CITY

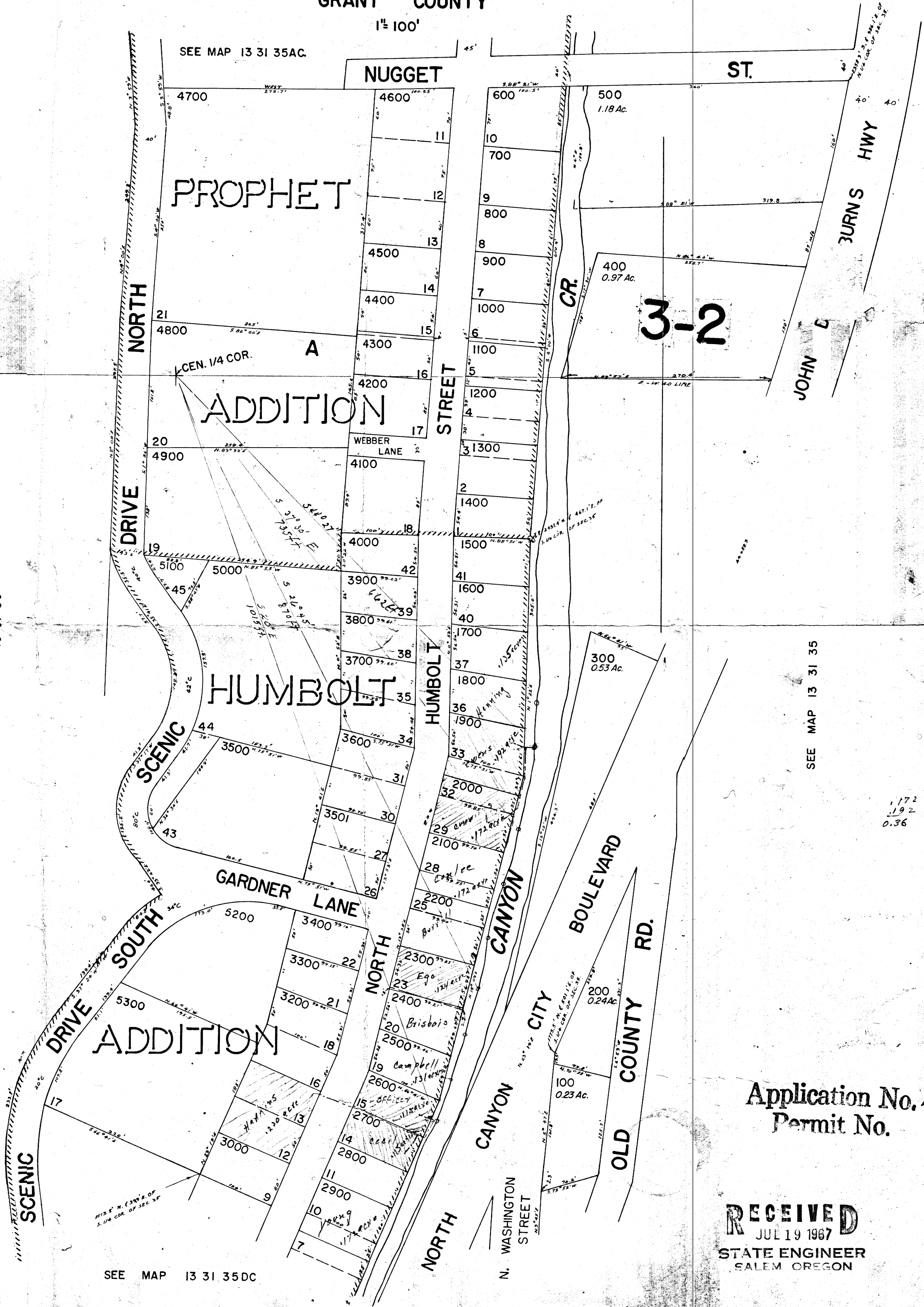
1 1/2 100'

SEE MAP 13 31 35AC.

SEE MAP 13 31 35

SEE MAP 13 31 35

SEE MAP 13 31 35DC



Application No. 43830
Permit No. "

RECEIVED
JUL 19 1967
STATE ENGINEER
SALEM OREGON

13 31 35DB
CANYON CITY