

Section 35 T. 20 S. R. 3 W. W.M.
LANE COUNTY

20 03 35

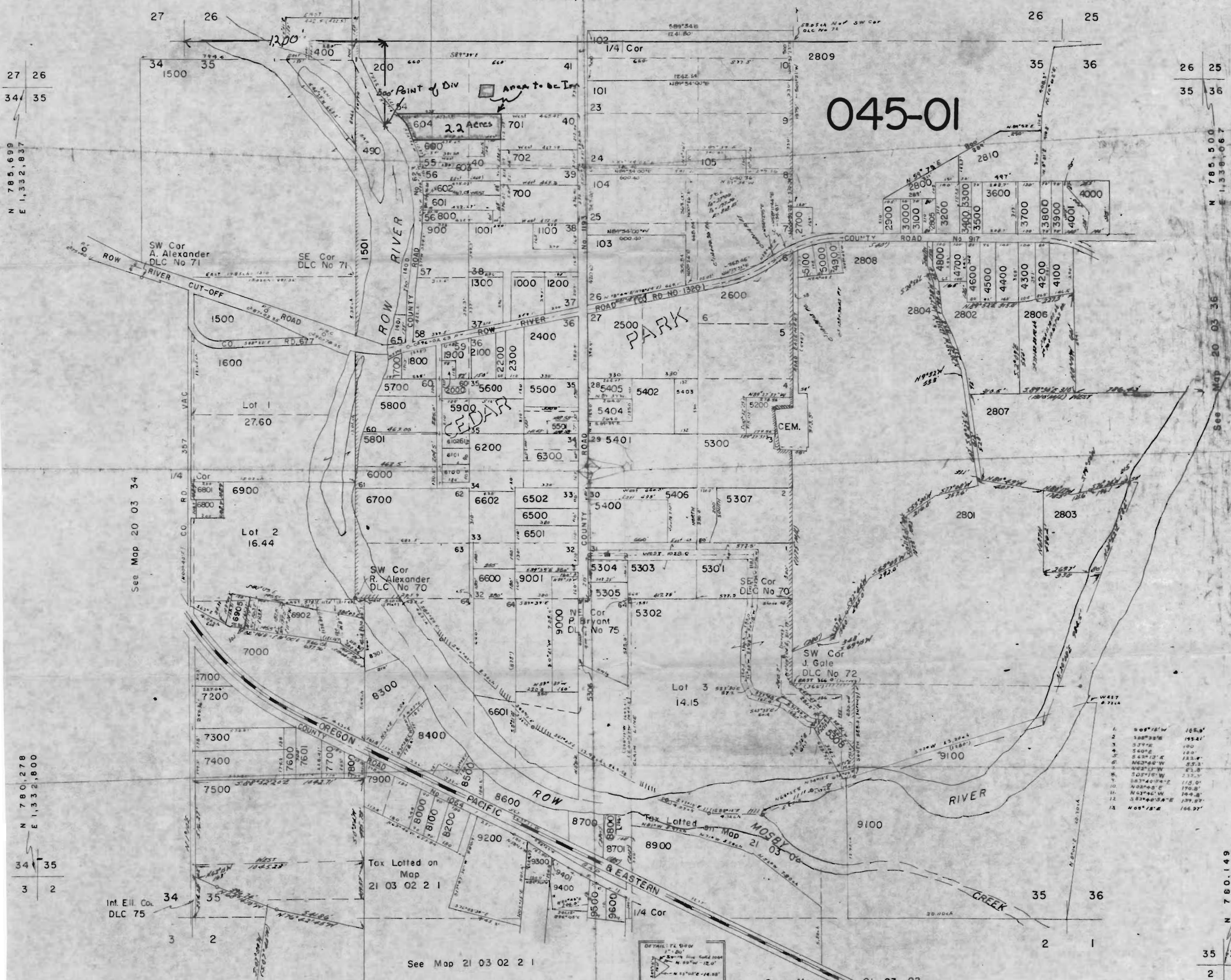
RECEIVED
JUN 12 1973
STATE ENGINEER
SALEM, OREGON

RECEIVED
OCT 1 9 1973
STATE ENGINEER
SALEM, OREGON

1" = 400'

See Map 20 03 26

045-01



1	S 89° 16' W	165.9'
2	S 88° 28' W	155.2'
3	S 77° E	180'
4	S 40° E	180'
5	S 62° 12' E	132.9'
6	N 62° 46' W	23.2'
7	W 82° 13' W	87.8'
8	S 25° 15' W	232.7'
9	S 83° 40' W	115.0'
10	N 82° 40' E	179.8'
11	N 62° 46' W	144.8'
12	S 83° 40' W	139.8'
13	N 65° 15' E	166.2'

Application No. 50650
Permit No. 38266