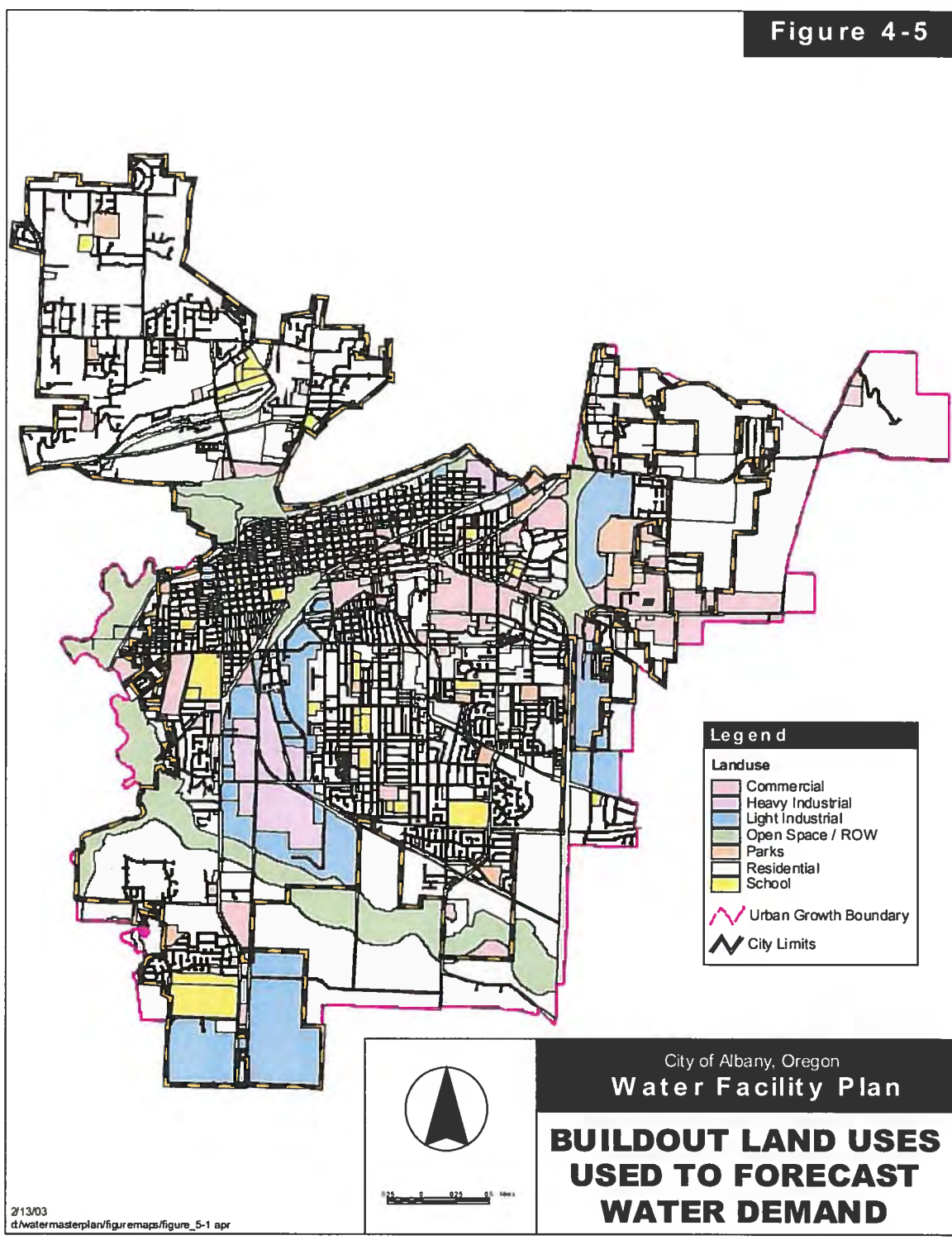


Figure 4-5

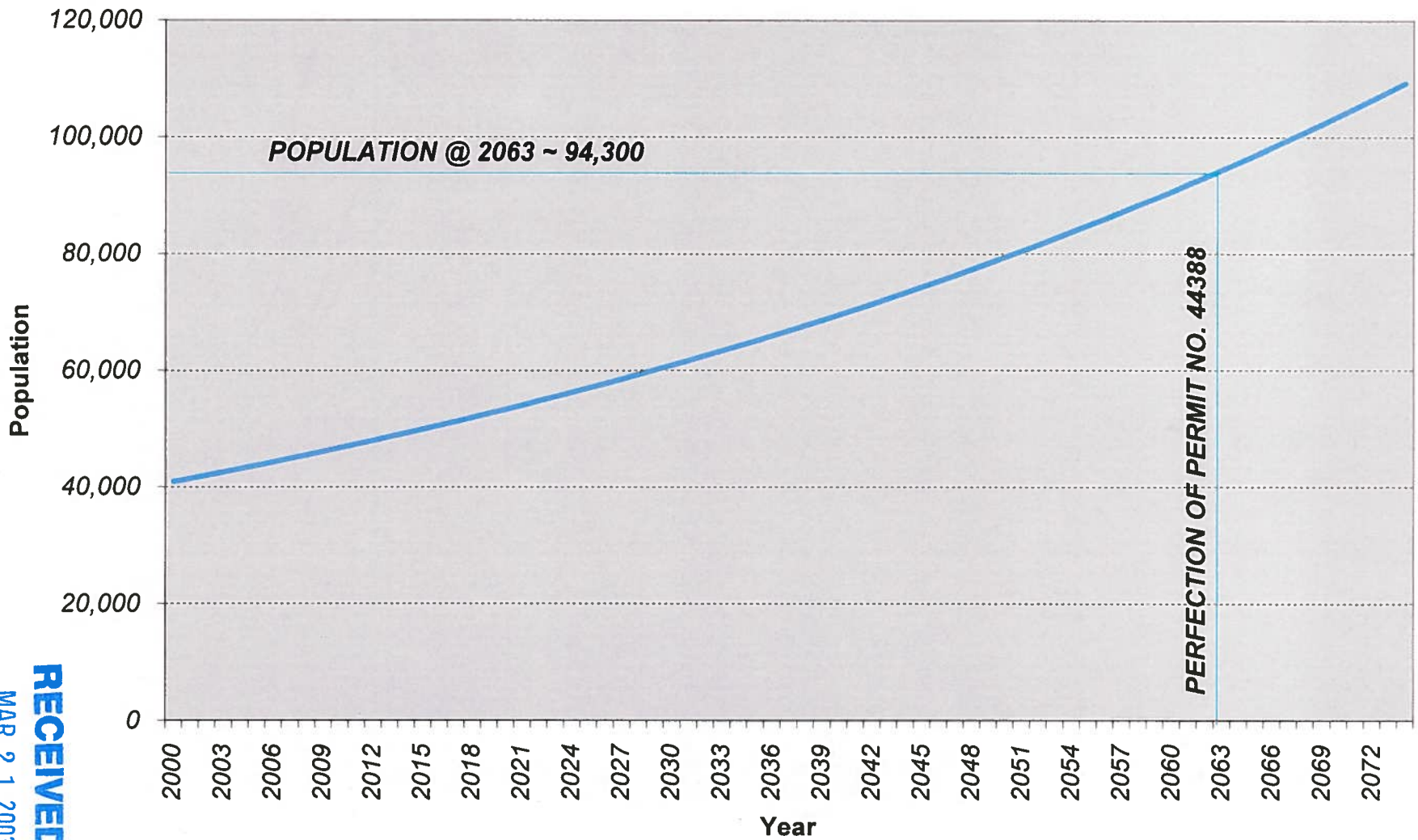


RECEIVED

MAR 21 2003

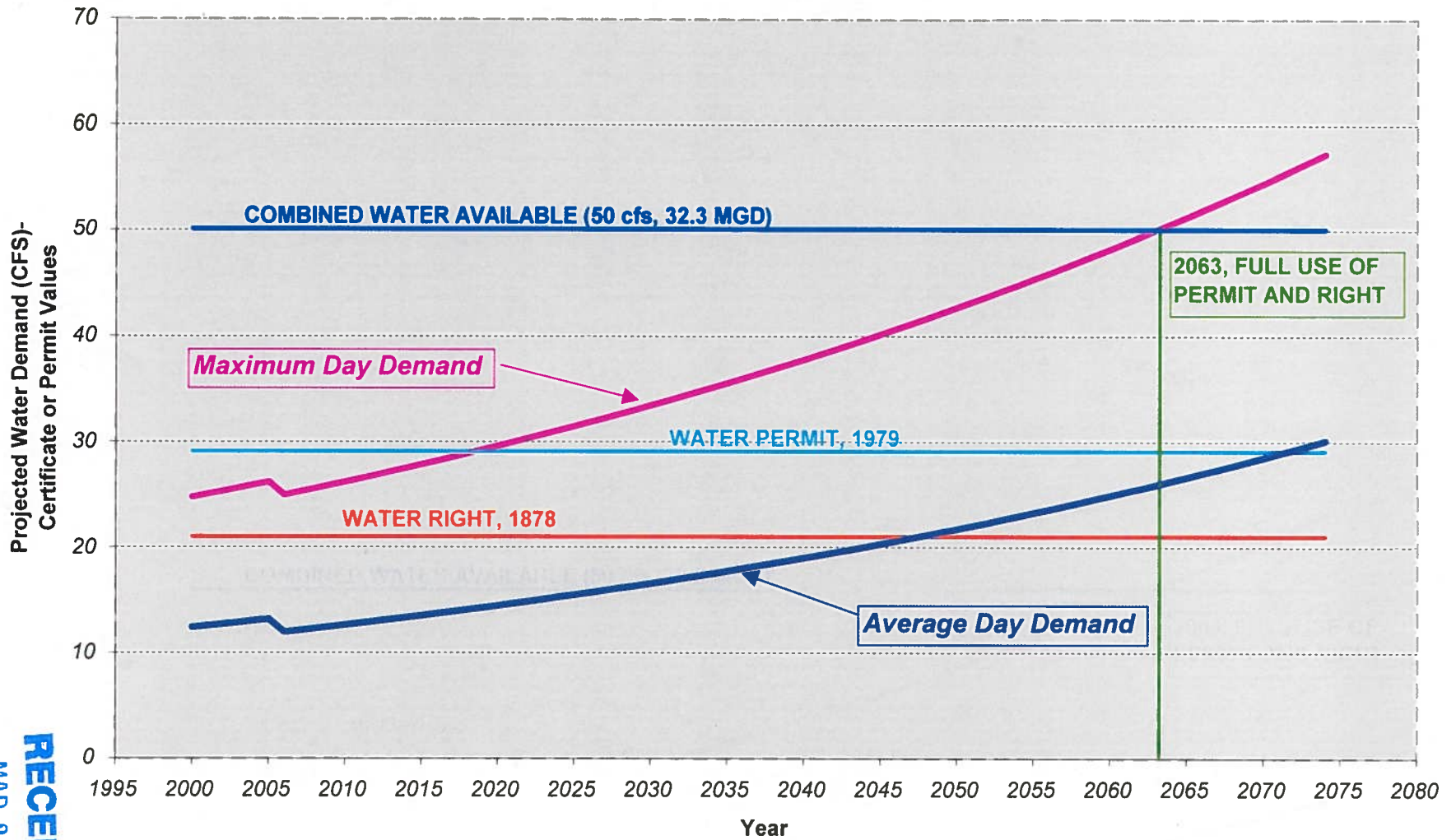
WATER RESOURCES DEPT
SALEM, OREGON

Figure 1: Projected Population Growth Rate for the City of Albany



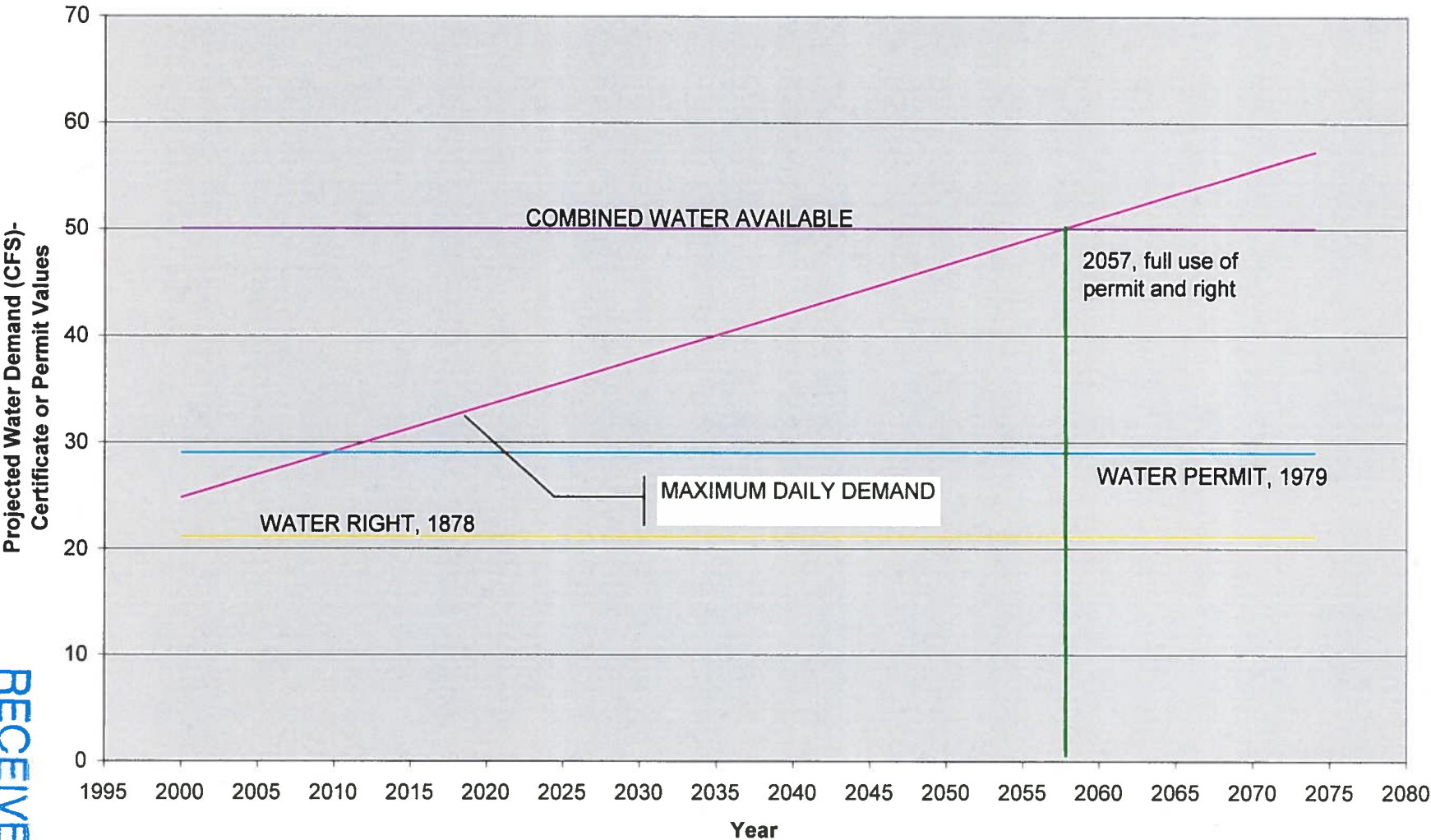
RECEIVED
MAR 21 2003
WATER RESOURCES DEPT.
SALEM, OREGON

Figure 2: City of Albany
Projected Water Demands



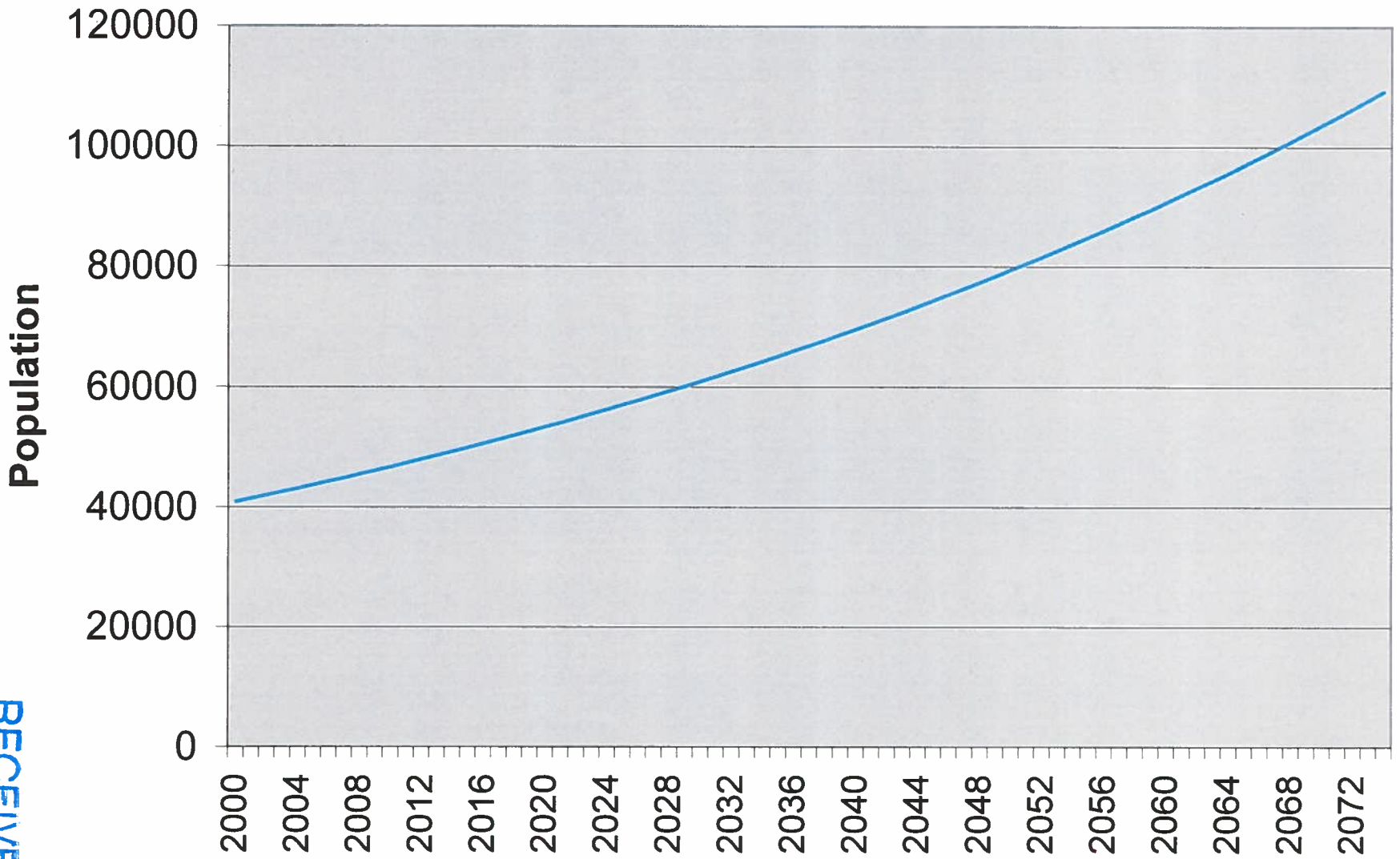
RECEIVED
 MAR 2 1 2003
 WATER RESOURCES DEPT.
 SALEM, OREGON

City of Albany Projected Water Demands

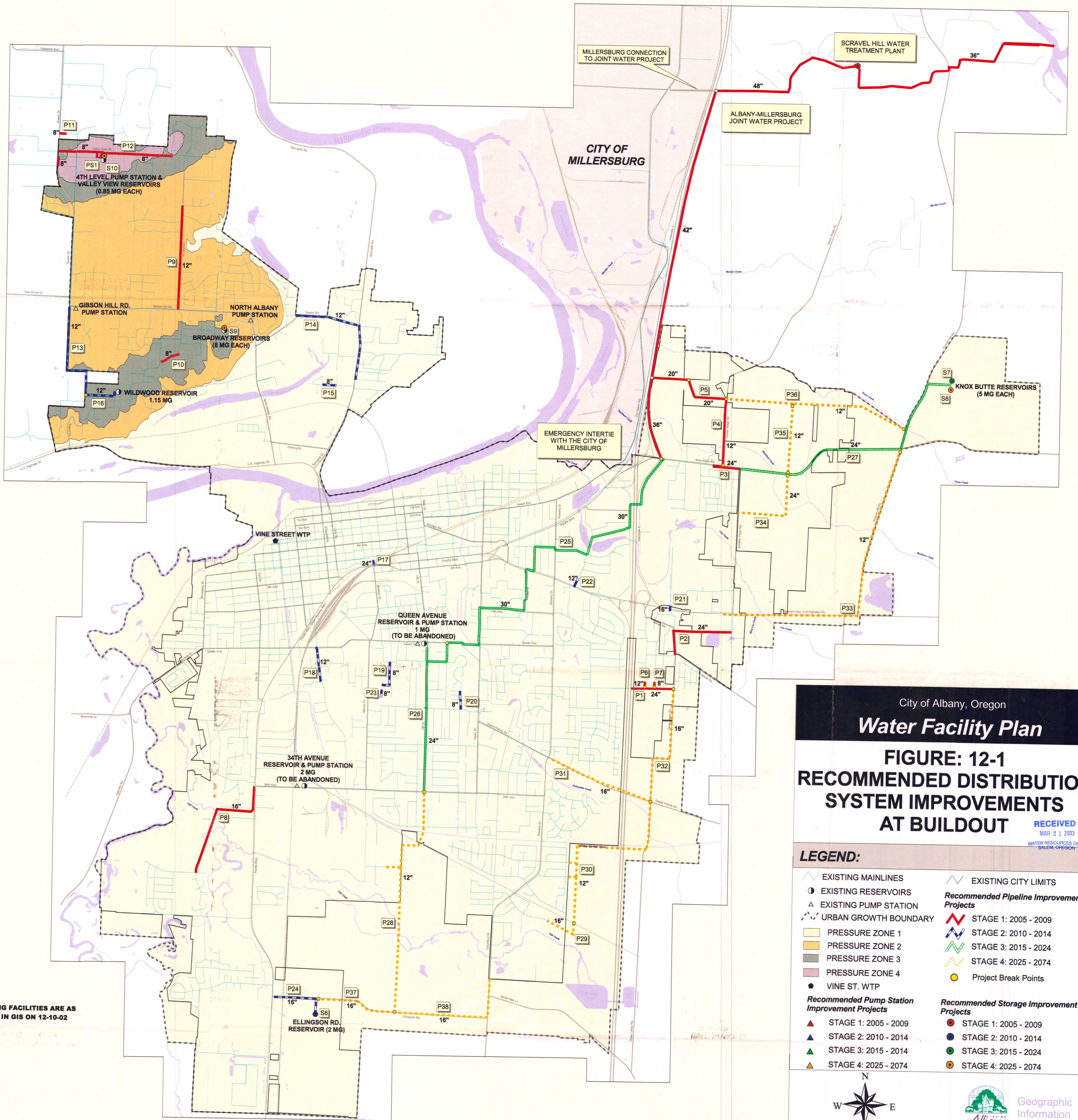


RECEIVED
 MAR 04 2002
 WATER RESOURCES DEPT.
 SALEM, OREGON

City of Albany Projected Population Growth



RECEIVED
MAR 04 2002
WATER RESOURCES DEPT.
SALEM, OREGON



NOTE:
EXISTING FACILITIES ARE AS
SHOWN IN GIS ON 12-10-02

City of Albany, Oregon
Water Facility Plan

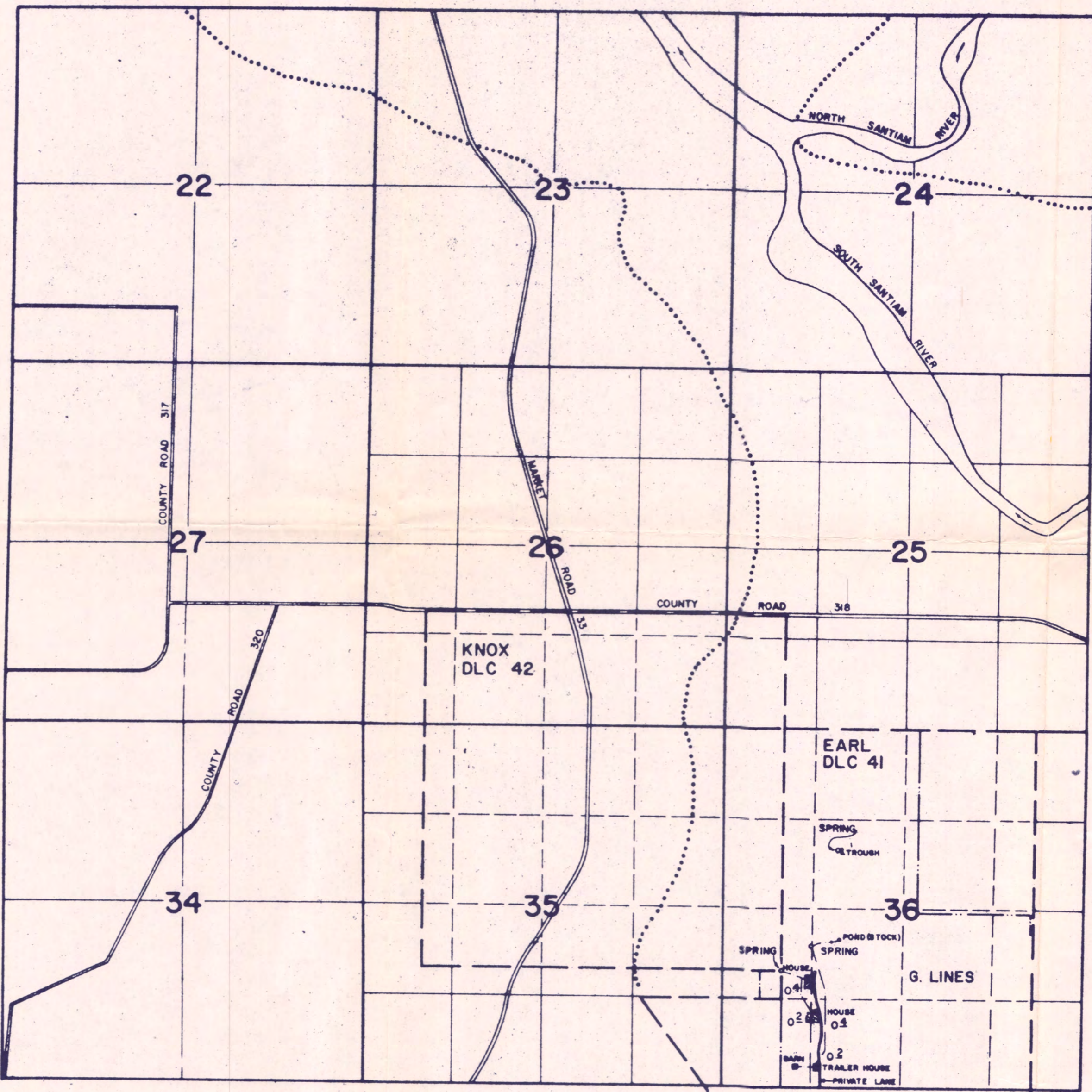
**FIGURE: 12-1
RECOMMENDED DISTRIBUTION
SYSTEM IMPROVEMENTS
AT BUILDOUT**

RECEIVED
MAR 2 1 2003
WATER RESOURCES DEPT.
SALEM, OREGON

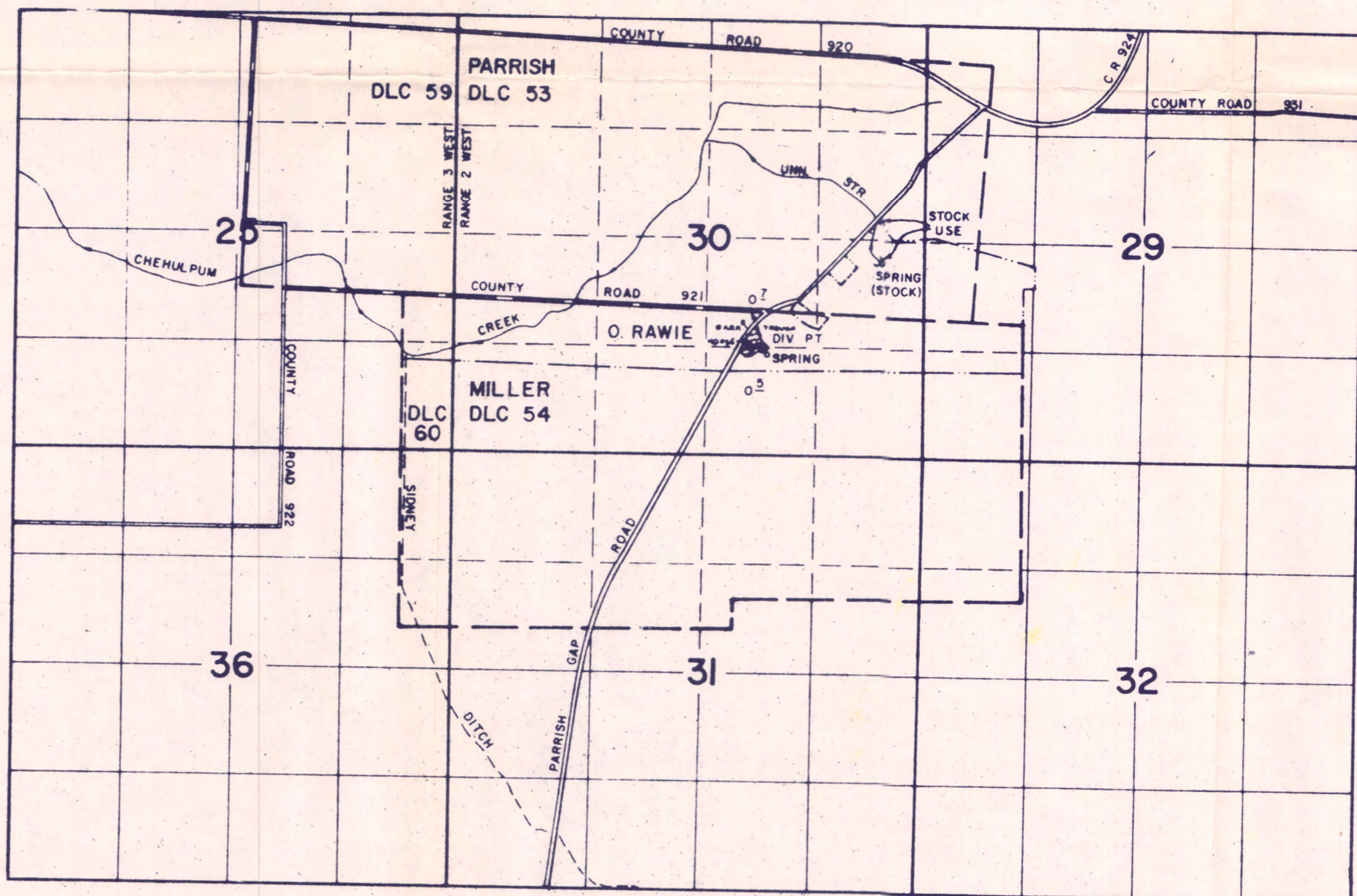
LEGEND:

<ul style="list-style-type: none"> EXISTING MAINLINES EXISTING RESERVOIRS EXISTING PUMP STATION URBAN GROWTH BOUNDARY PRESSURE ZONE 1 PRESSURE ZONE 2 PRESSURE ZONE 3 PRESSURE ZONE 4 VINE ST. WTP 	<ul style="list-style-type: none"> STAGE 1: 2005 - 2009 STAGE 2: 2010 - 2014 STAGE 3: 2015 - 2024 STAGE 4: 2025 - 2074 Project Break Points
<ul style="list-style-type: none"> STAGE 1: 2005 - 2009 STAGE 2: 2010 - 2014 STAGE 3: 2015 - 2014 STAGE 4: 2025 - 2074 	<ul style="list-style-type: none"> STAGE 1: 2005 - 2009 STAGE 2: 2010 - 2014 STAGE 3: 2015 - 2024 STAGE 4: 2025 - 2074

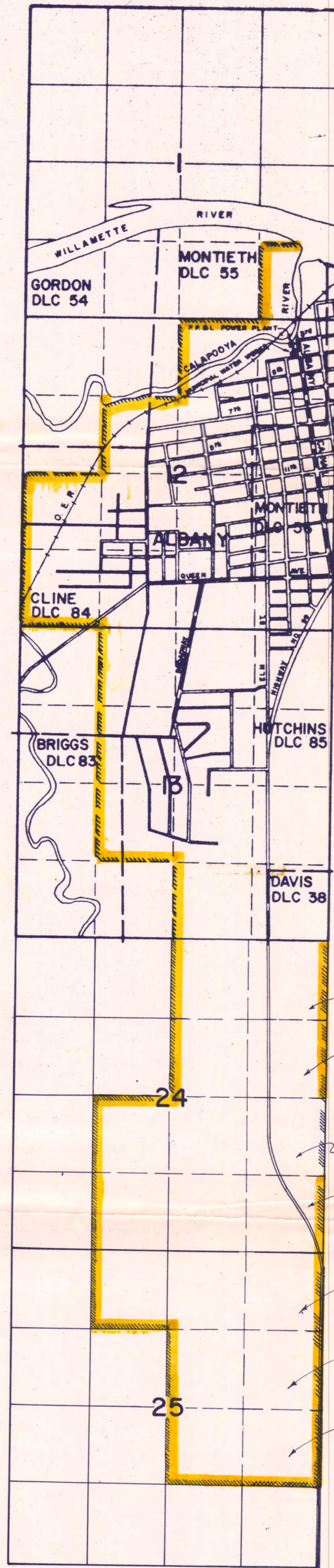
TOWNSHIP 10 SOUTH, RANGE 3 WEST. W.M.



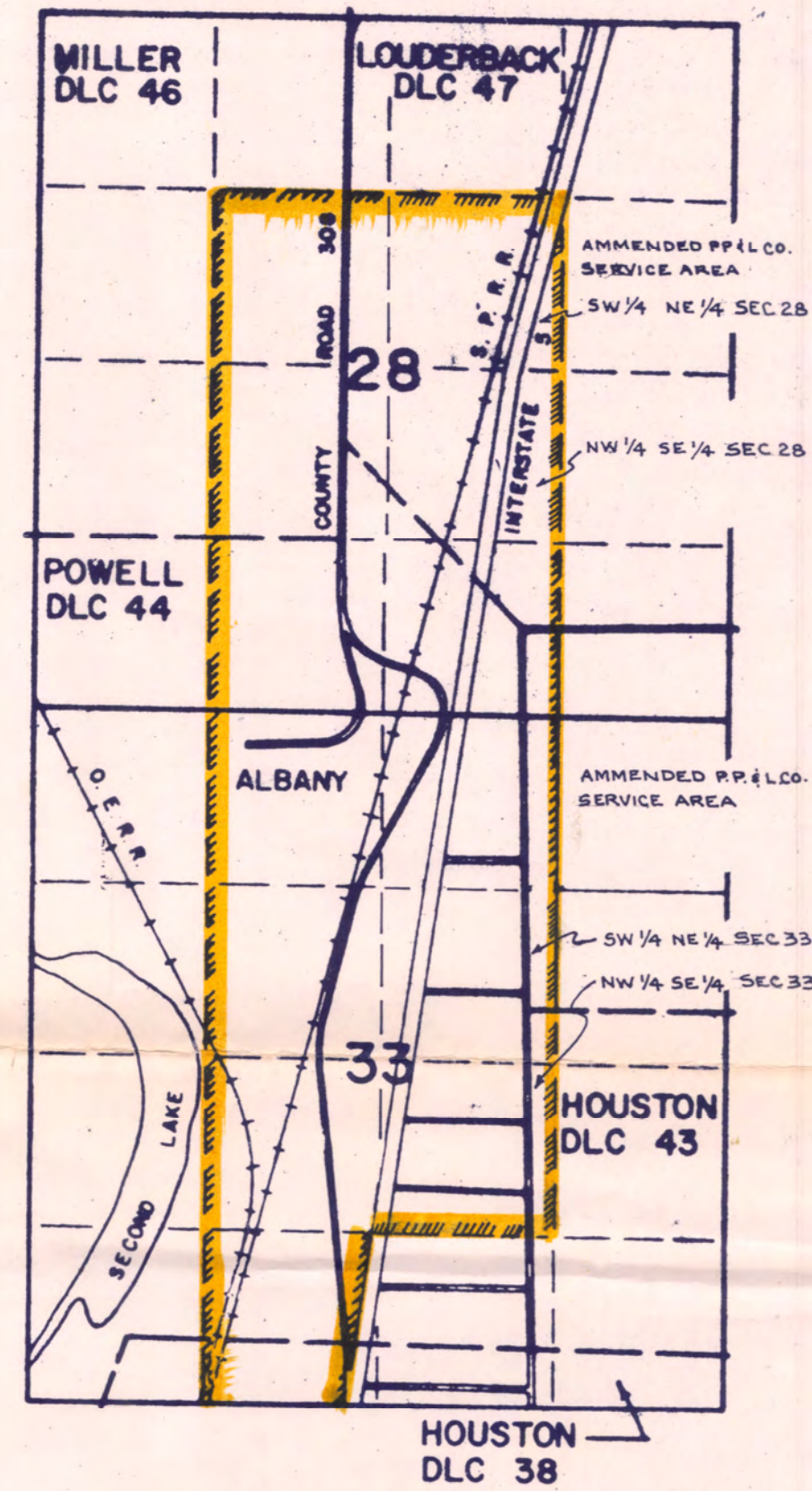
TOWNSHIP 9 SOUTH, RANGE 2 & 3 WEST. W.M.



TOWNSHIP 11 SOUTH, RANGE 4 WEST. W.M.



TOWNSHIP 10 SOUTH, RANGE 3 WEST. W.M.



- AMMENDED P.P. & L. CO. SERVICE AREA
- NE 1/4 NE 1/4 SEC 24
- SE 1/4 NE 1/4 SEC 24
- NE 1/4 SE 1/4 SEC 24
- SE 1/4 SE 1/4 SEC 24
- AMMENDED P.P. & L. CO. SERVICE AREA
- NE 1/4 NE 1/4 SEC 25
- SE 1/4 NE 1/4 SEC 25
- NE 1/4 SE 1/4 SEC 25

MAP

TO ACCOMPANY APPLICATION FOR PERMIT TO APPROPRIATE SURFACE WATER FOR PACIFIC POWER & LIGHT COMPANY ALBANY WATER SERVICE AREA

Application No. 58906
Permit No. 44388

ALBANY, OREGON
WATER SYSTEM SERVICE AREA

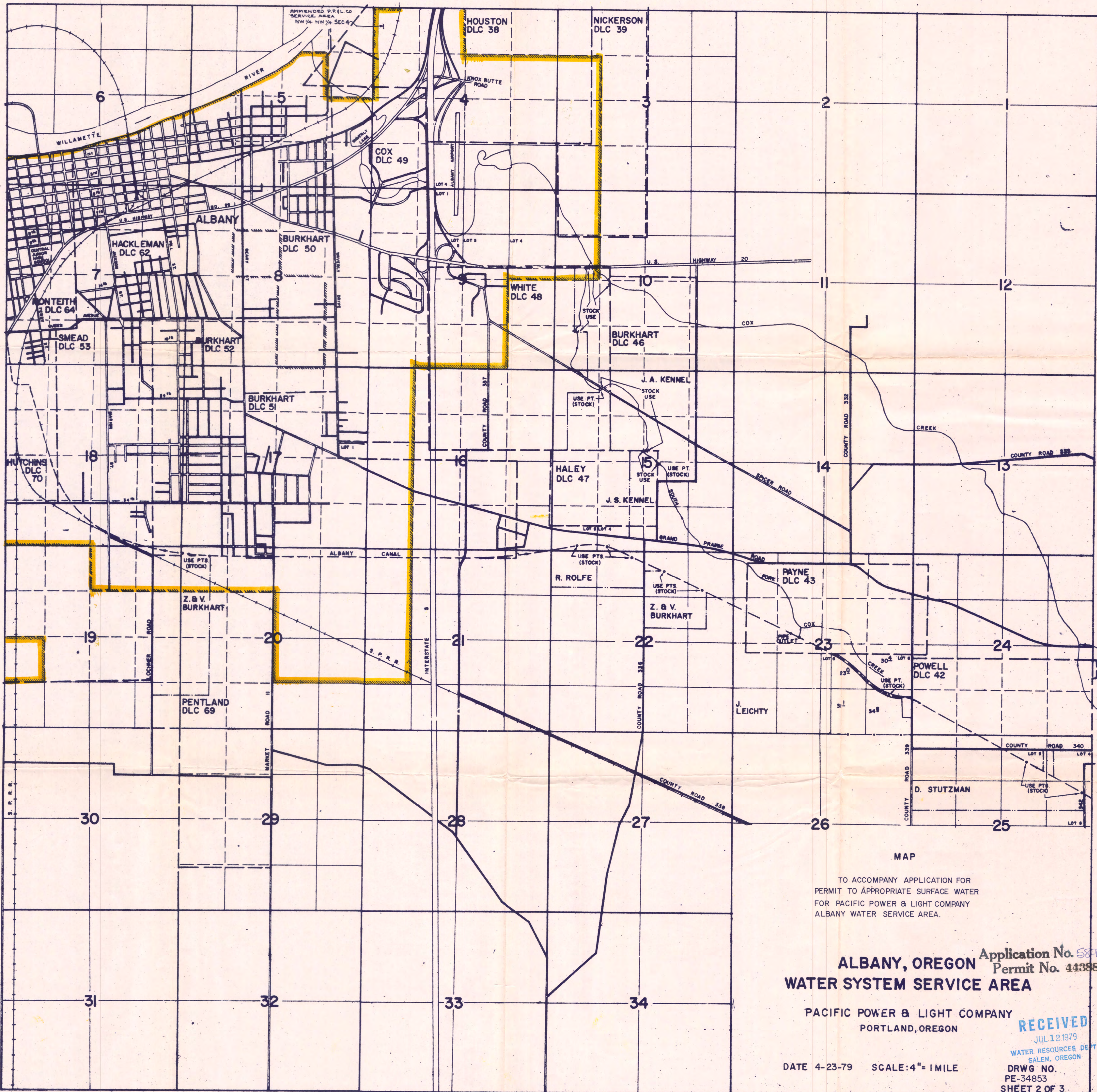
PACIFIC POWER & LIGHT COMPANY
PORTLAND, OREGON

RECEIVED
JUL 12 1979

DATE 4-23-79 SCALE: 4" = 1 MILE

WATER RESOURCES DIVISION
SALEM, OREGON
DRWG NO. PE-34853
SHEET 1 OF 3

TOWNSHIP 11 SOUTH, RANGE 3 WEST. W. M.



MAP
 TO ACCOMPANY APPLICATION FOR
 PERMIT TO APPROPRIATE SURFACE WATER
 FOR PACIFIC POWER & LIGHT COMPANY
 ALBANY WATER SERVICE AREA.

ALBANY, OREGON Application No. 58906
 Permit No. 44388
WATER SYSTEM SERVICE AREA

PACIFIC POWER & LIGHT COMPANY
 PORTLAND, OREGON

DATE 4-23-79 SCALE: 4" = 1 MILE

RECEIVED
 JUL 12 1979
 WATER RESOURCES DEPT
 SALEM, OREGON
 DRWG NO.
 PE-34853
 SHEET 2 OF 3

Main data table with columns: MANIFOLD, TIME, CITY, CITY, RESERVOIR LEVELS (QUEEN, BURK, MAPLE, 34th, WELL), CLEAR, CHEMICAL (FEEDER SETTING), RESIDUALS (CHLORINE, FLUORIDE), PH TEST, RAW WATER (TURB, FLOW, TEMP), WEATHER, PLANT PRESS PUMPS, TIME, HOURS RUN.

RECEIVED SEP 17 1986 WATER RESOURCES DEPT SALEM, OREGON

79.07/86

Summary and production data table with sections: ACCELERATOR, WATER CONSUMPTION AND PRODUCTION CALCULATIONS, GALLONS, FILTER NO., WATER METERS, SERVICE WATER, POUNDS USED, FILTER WASH WATER, OPERATOR, ON/OFF, ALBANY TOTAL PRODUCTION, DAY TOTAL, PREVIOUS TOTAL.