

Proposed Place of Use:

USE	TWP	RNG	SEC	QQ	TAX LOT	ACRES	TAX LOT	ACRES
Impg	8N	4W	33	NW	901	4.3	901	4.3
Impg	8N	4W	33	SW	901	1.8	901	1.8
Impg	8N	4W	33	NE	901	38.1	901	38.1
Impg	8N	4W	33	SE	901	13.5	901	13.5
Impg	8N	4W	33	NW	901	22.7	901	22.7
Impg	8N	4W	33	SW	901	4.3	901	4.3
Impg	8N	4W	28	NE	1000	5.0	1000	5.0
Impg	8N	4W	28	SE	1000	27.1	1000	27.1
Impg	8N	4W	28	SW	1000	12.6	1000	12.6
Impg	8N	4W	28	NW	1000	0.6	1000	0.6
Impg	8N	4W	33	NW	901	45.3	901	45.3

46.31

LOT 3 27.60

LOT 2 40.97

SEE

LOT 6 45.17

8 N 4 W 33

11/17

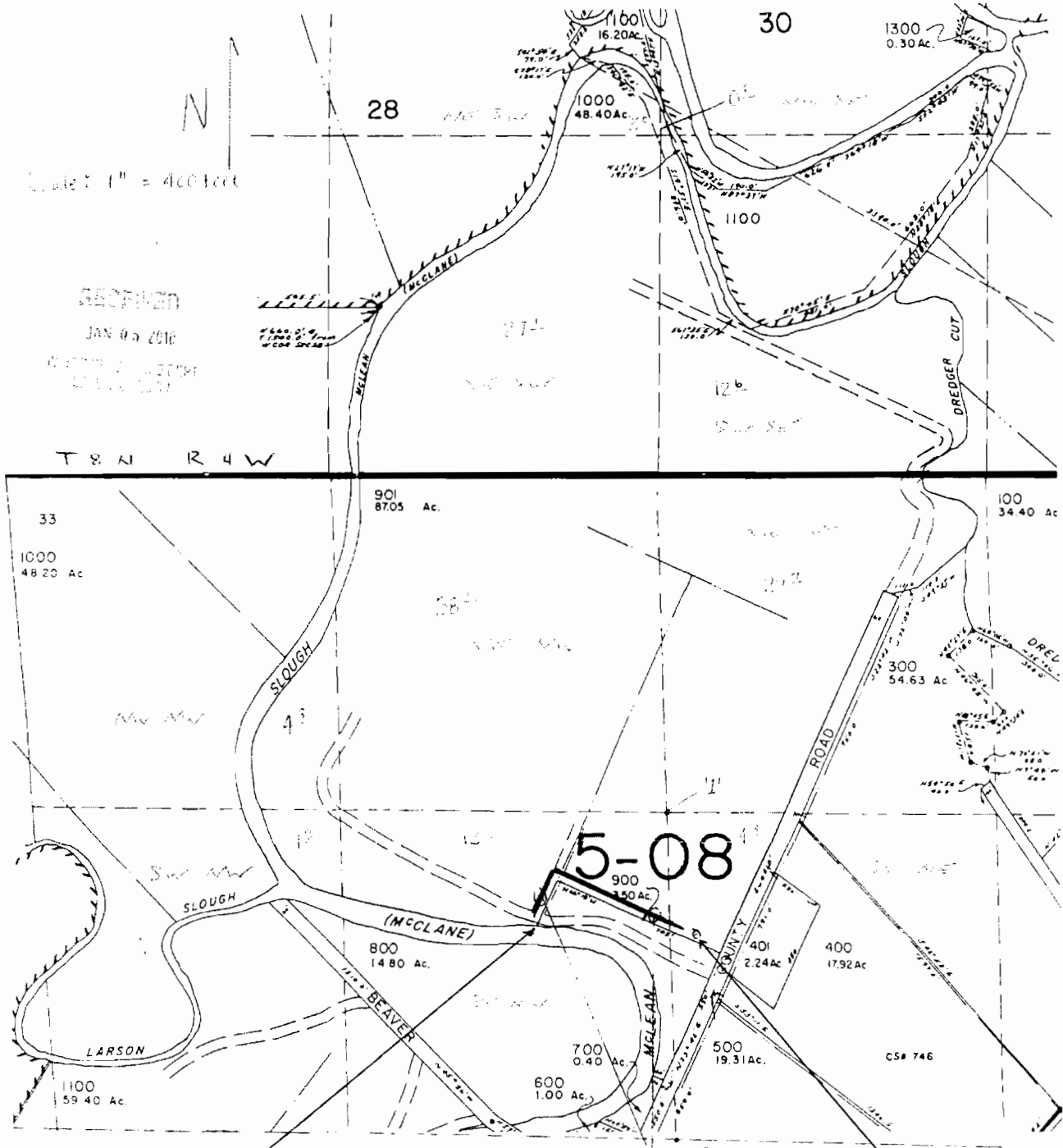
Scale: 1" = 400 feet

SECTION

JAN 05 2016

WATER DIVISION

T 8 N R 4 W



Location of Water Division
West 325 feet corner of section 33
on the NE corner of the SE 1/4
of the NW 1/4 of section 33.

Location of Pump Station
East 100 feet corner of section 34
on the NW corner of the SW 1/4
of the NE 1/4 of section 33.

County: Columbia County

Basin: North Canal Basin

Proposed Place of Use:

USE	TWP	RNG	SEC	QQ	TAX LOT	ACRES	ACRES per TAX LOT	TOTAL ACRES
Irrig	8N	4W	33	NW NW	901	4.3		
Irrig	8N	4W	33	SW NW	901	1.0		
Irrig	8N	4W	33	NE NW	901	38.1		
Irrig	8N	4W	33	SE NW	901	13.5		
Irrig	8N	4W	33	NW NE	901	22.7		
Irrig	8N	4W	33	SW NE	901	4.3	84.7	
Irrig	8N	4W	28	NE SW	1000	5.0		
Irrig	8N	4W	28	SE SW	1000	27.1		
Irrig	8N	4W	28	SW SE	1000	12.6		
Irrig	8N	4W	28	NW SE	1000	6.6	45.3	130