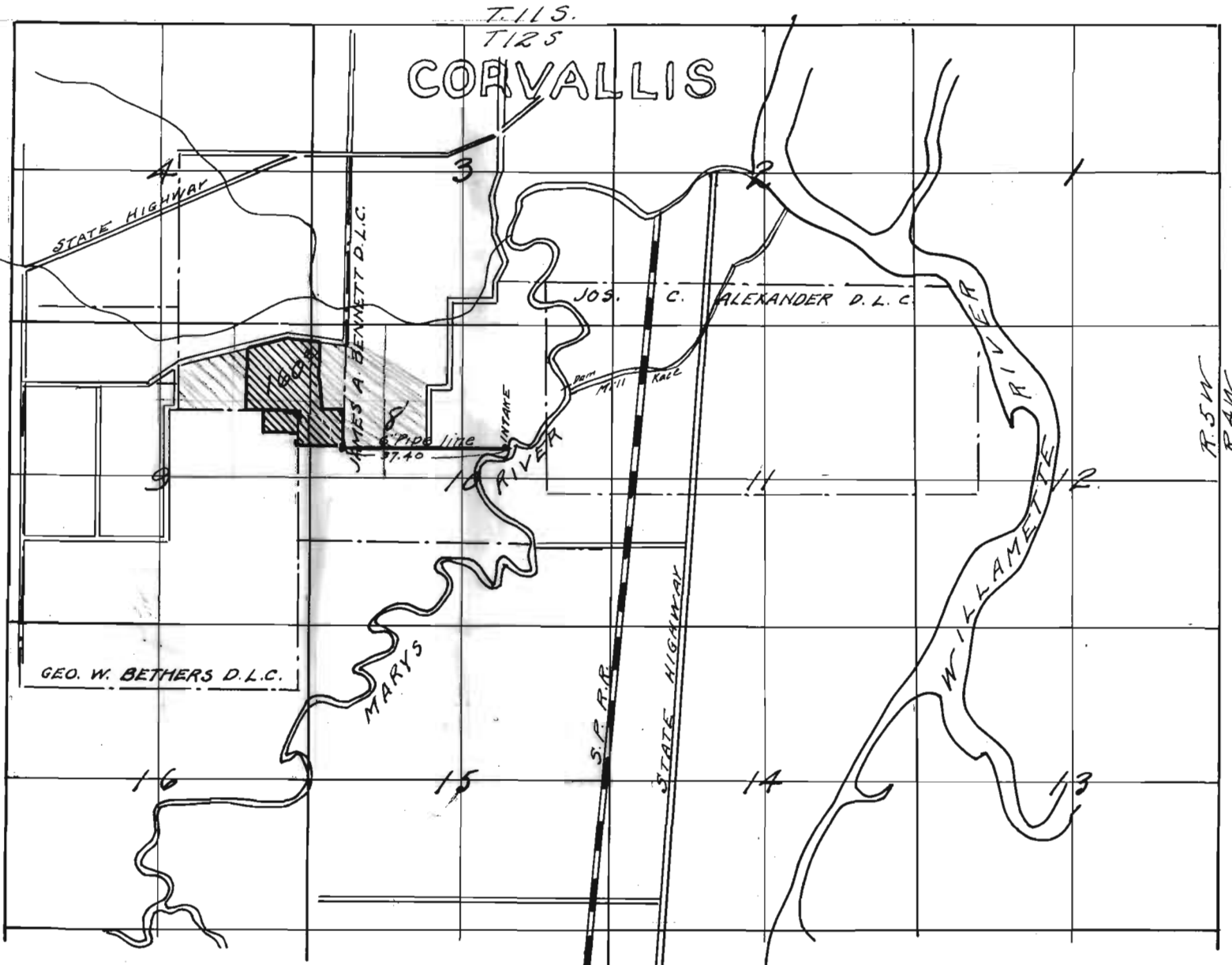


COUNTRY CLUB IRRIGATION WORKS

T. 12 S. R. 5 W., W.M.

Scale: - 1 in. = 40 chs.



Certificate: -

I, Walter W. Larsen, of Corvallis, Oregon, do hereby certify that this map was made from notes of an actual survey made by the County Surveyor and others on and before July 1st 1929, and that it correctly represents the works described in the accompanying application together with the location of streams and ditches in the immediate vicinity.

Walter W. Larsen
Reg. Prof. Eng.

Ore. No. 1261

July 1, 1929

Application No. 12839

Permit No. 9107