

R. 6. E.

T. 33. S. R. 7 1/2. E.

24

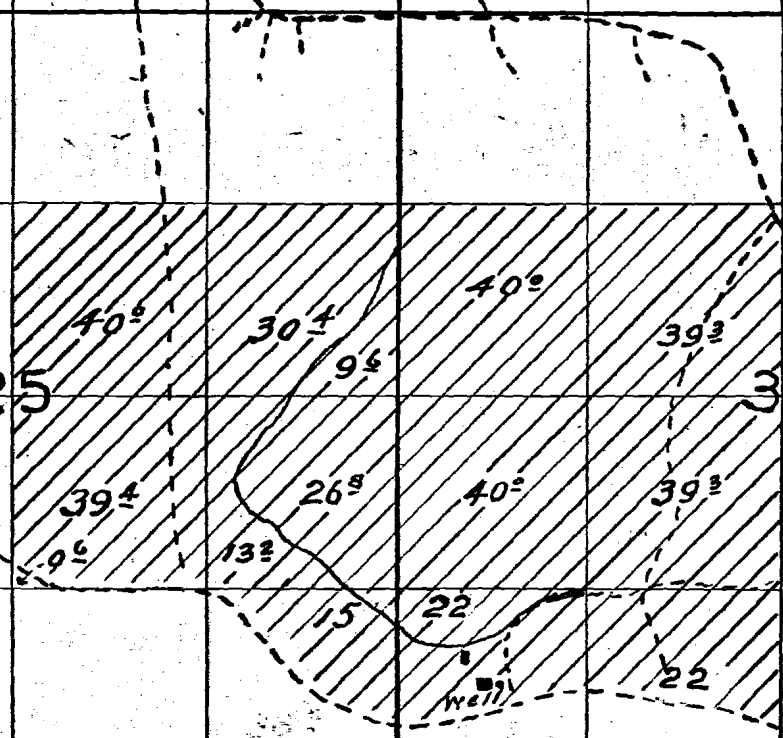
19

Sevenmile crk + misc

BLUE SPRING

Blue Spring Ditch
Melrose Kingdon Ditch

Sever Mile Creek
Spillway



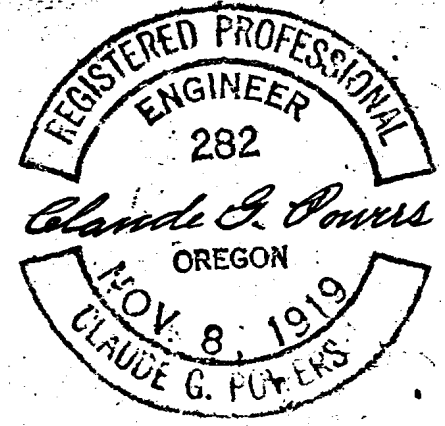
Range Line

I, Claude G. Powers, of Portland, Ore do hereby certify this map was made from data taken from maps prepared by Rhea Luper, State Engineer of Oregon, in connection with the matter of the adjudication of Water Rights in Wood River, Seven Mile Creek, etc. and that it correctly represents the works described in the accompanying application, together with the location of Streams and other ditches in the immediate vicinity, all as shown by said State Engineer's maps.

Claude G Powers

Registered Professional Engineer

Oregon. No 282. Nov. 8, 1919.



Scale - 4 in. = 1 Mile.

Application No. 12305

Permit No. 9122

9122
19036