

Map of
FLOOD WATER DITCH

John C. Silvers Estate
Appropriator

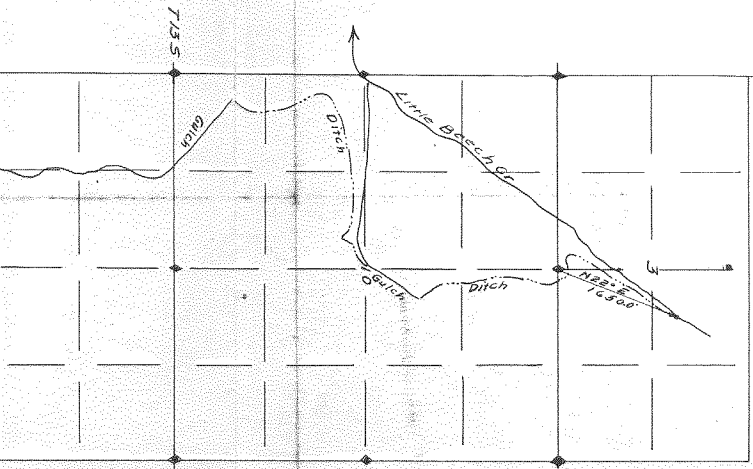
Scale 4 in. = 1 mile



Certificate of Surveyor

I, L. E. Lucas, of John Day, Oregon, do hereby certify that this map was made from notes taken during an actual survey made under my immediate supervision on December 3-4, 1927, and that it correctly represents the location of the works described in the accompanying application

L. E. Lucas
County Engineer
No. 304.



FLOOD WATER

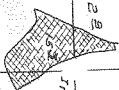
John G. Silve

Scale 4

Certified

I, L. ELUCAS,
Certify that this map
during an actual survey
supervision on December
Correctly represents
described in the acco

Application No. 11950
Parcel No. 8378



Trigred area included on
Adjudication Map, page
18, 20 Acres.

22

15

R. 31 E.

T. 13 S.

20

40

90

50

30

21

Day River

John

Ditch

Spring Reservoir

Irrigation Ditch

Ditch

Quinn