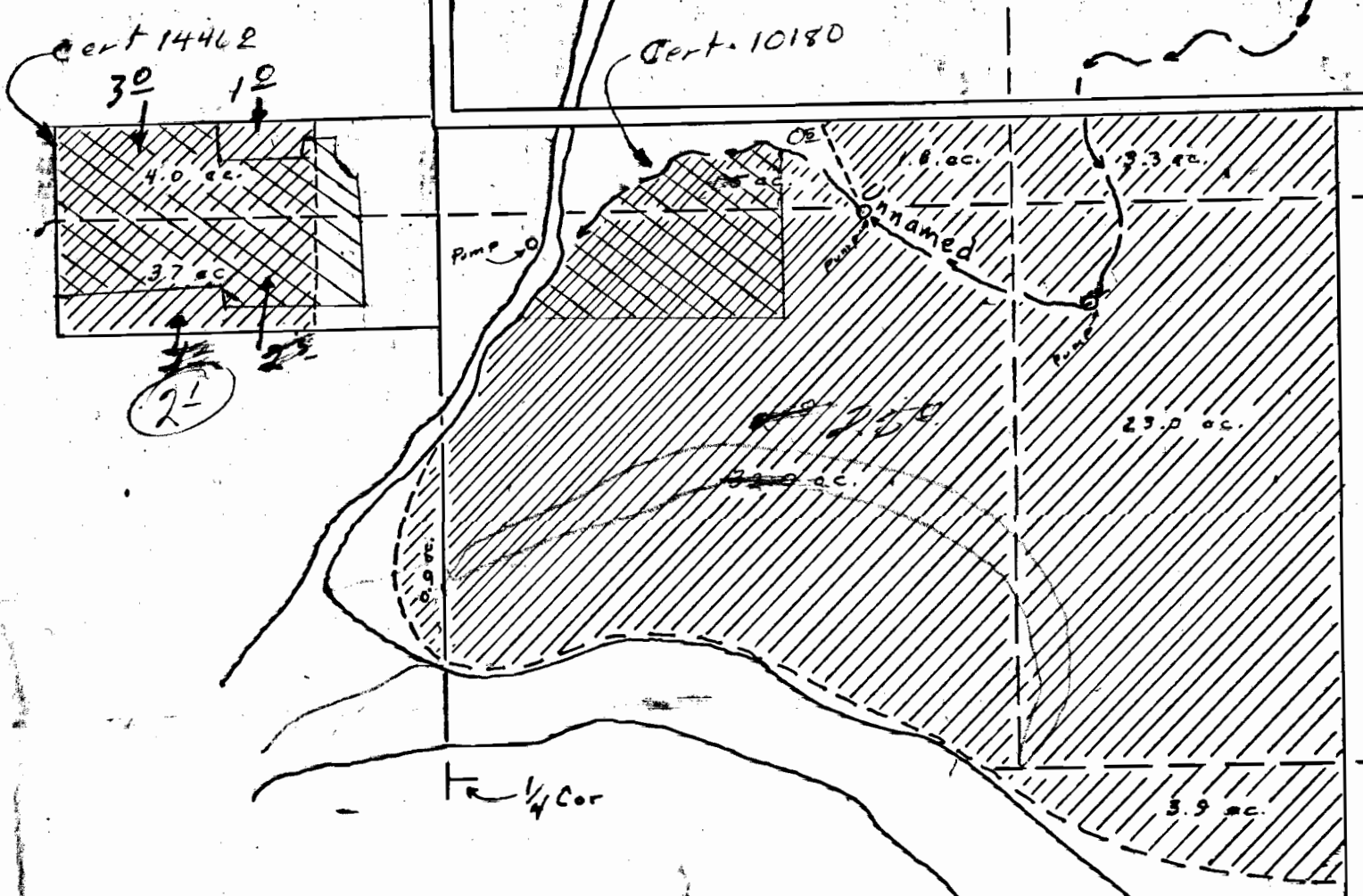
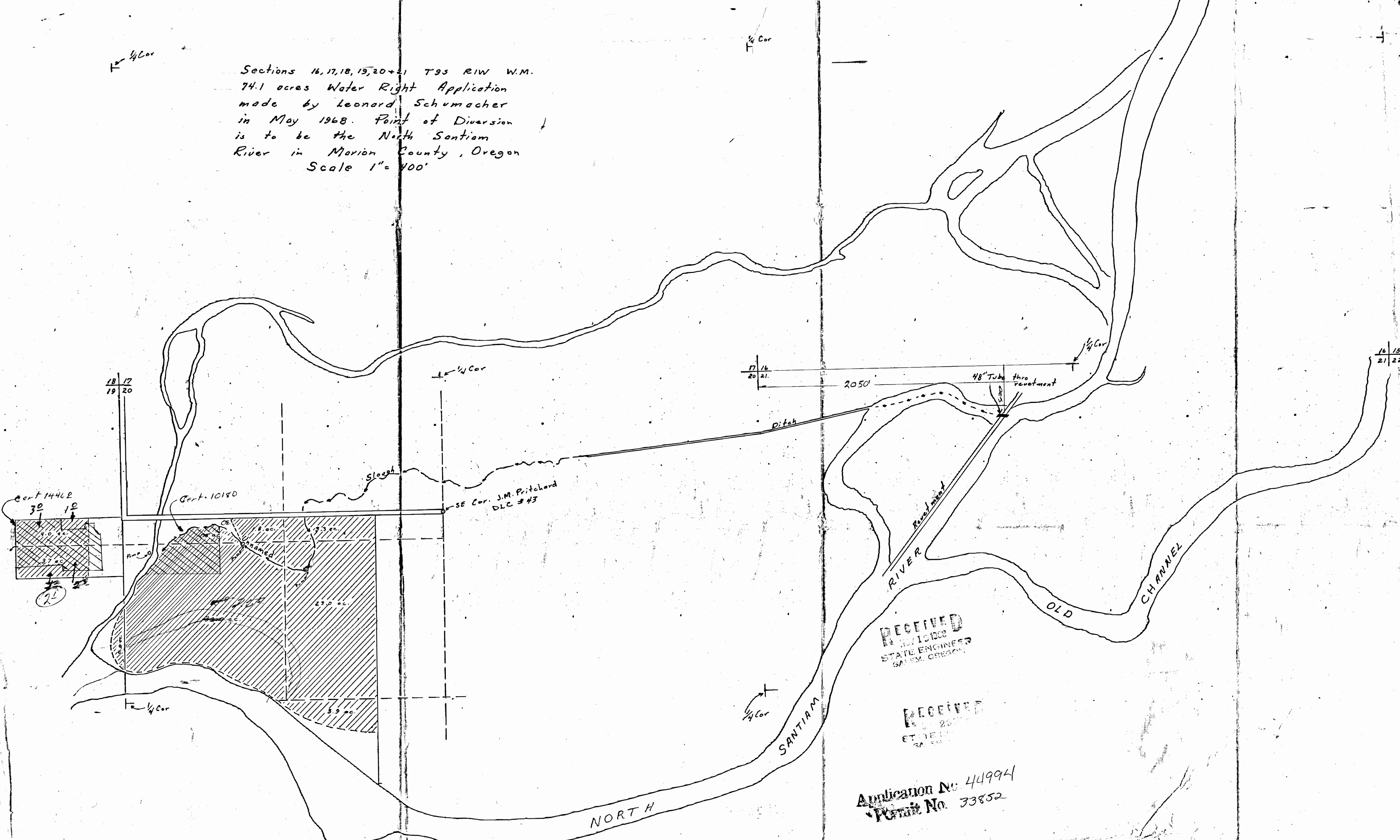


Sections 16, 17, 18, 19, 20 & 21 T9S R1W W.M.  
 74.1 acres Water Right Application  
 made by Leonard Schumacher  
 in May 1968. Point of Diversion  
 is to be the North Santiam  
 River in Marion County, Oregon  
 Scale 1" = 400'



RECEIVED  
 JUN 10 1968  
 STATE ENGINEER  
 SALEM, OREGON

RECEIVED  
 JUN 20 1968  
 STATE ENGINEER  
 SALEM, OREGON

Application No. 44994  
 Permit No. 33852

18 17  
 19 20

17 16  
 20 21

16 15  
 21 22

NORTH

SANTIAM

RIVER

OLD CHANNEL

SE Cor. J.M. Pritchard  
 DLC # 43

Cont. 10180

Cont 14462

Sloosh

Ditch

48" Tube thro  
 revetment

2050'

1/4 Cor

1/4 Cor

1/4 Cor

1/4 Cor

1/4 Cor

1/4 Cor