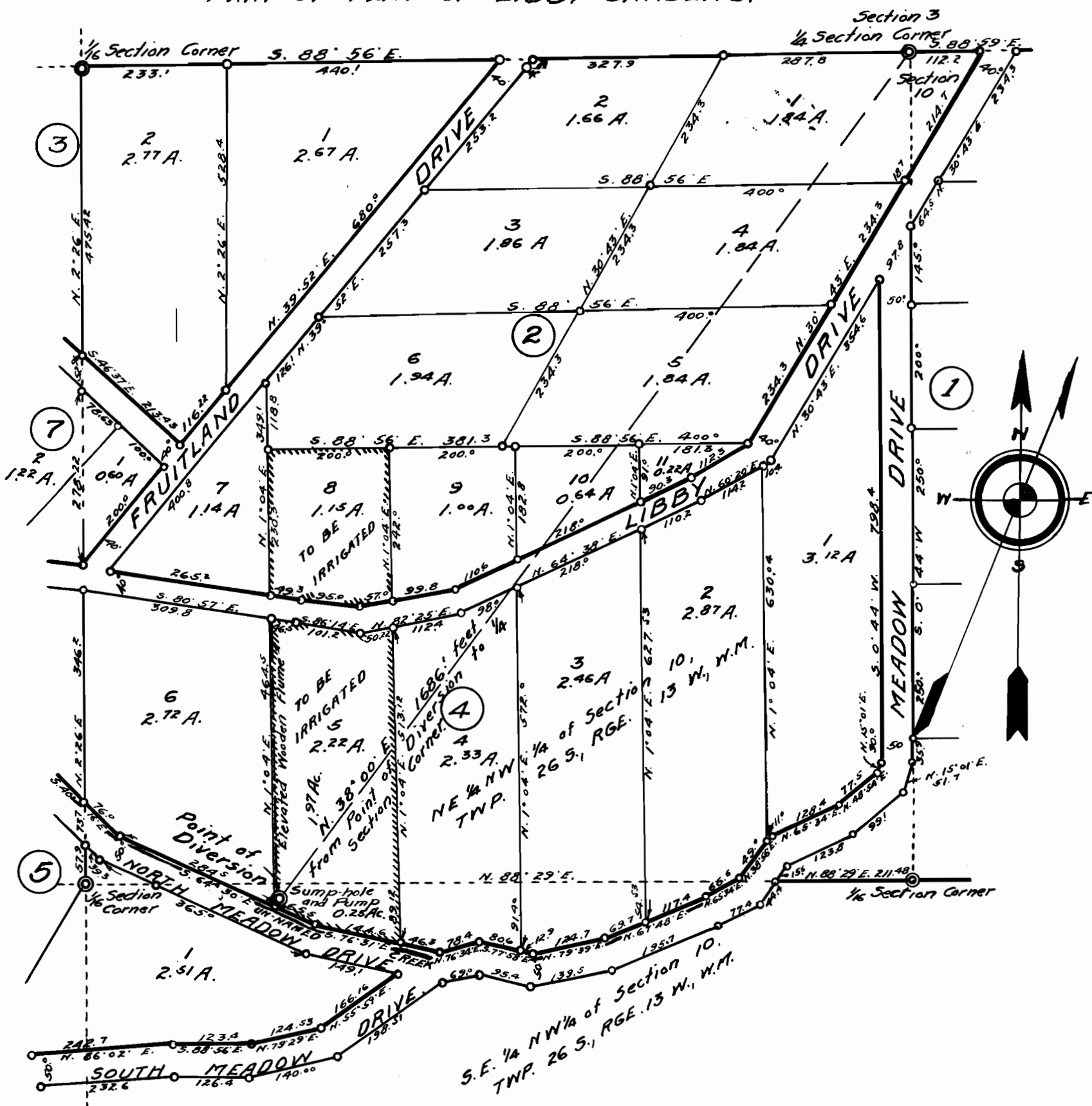


PART OF PLAT OF LIBBY GARDENS.



I, C.F. Bessee, of Marshfield, Oregon, do hereby certify that this map was made from notes taken during an actual survey made by me on the 8th day of October, 1932, and that it correctly represents the Point of Diversion and the location of the creek channel in the immediate vicinity thereof.

C. F. Bessee.

PLAN ACCOMPANYING APPLICATION OF
J. W. ROYCE
 FOR RIGHT TO APPROPRIATE WATER
 FROM AN UN-NAMED CREEK
 IN SE 1/4 NW 1/4 OF SECTION 10, TWP. 26 S., RG. 13 W., W.M.

SCALE: 1 INCH = 200 FEET.



Application No. 14793
 Filed No. 10708

THE STATE OF OREGON
 DEPARTMENT OF AGRICULTURE
 DIVISION OF WATER CONTROL
 OREGON WATER CONTROL