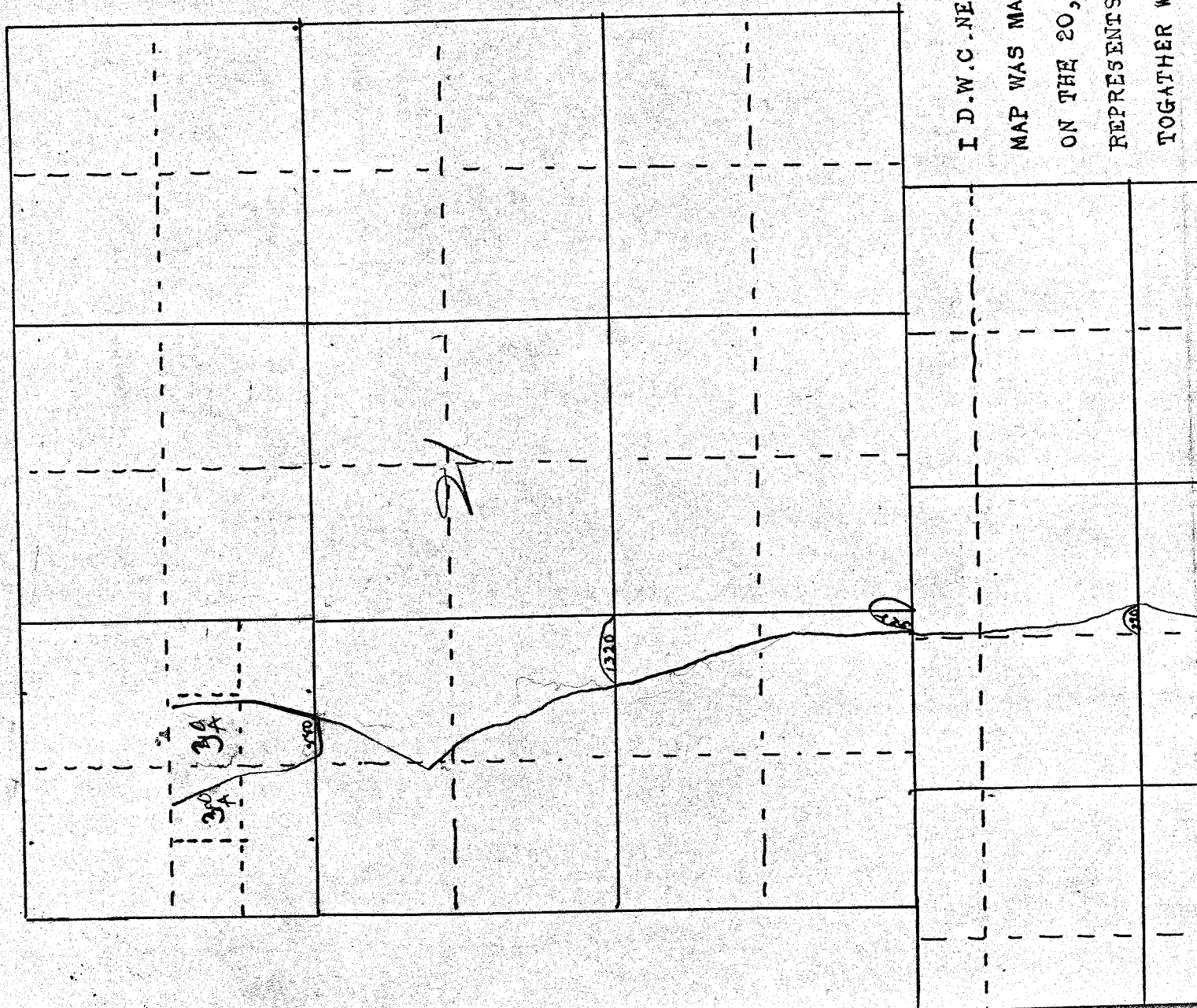




Th. 135 R 34 E



I D.W.C. NELSON OF PRARIE CITY, OREGON DO  
MAP WAS MADE FROM NOTES TAKEN DURING A  
ON THE 20, AND 21ST PAYS OF JUNE. 1910  
REPRESENTS THE WORKS DESCRIBED IN THE  
TOGETHER WITH THE LOCATION OF STREAMS