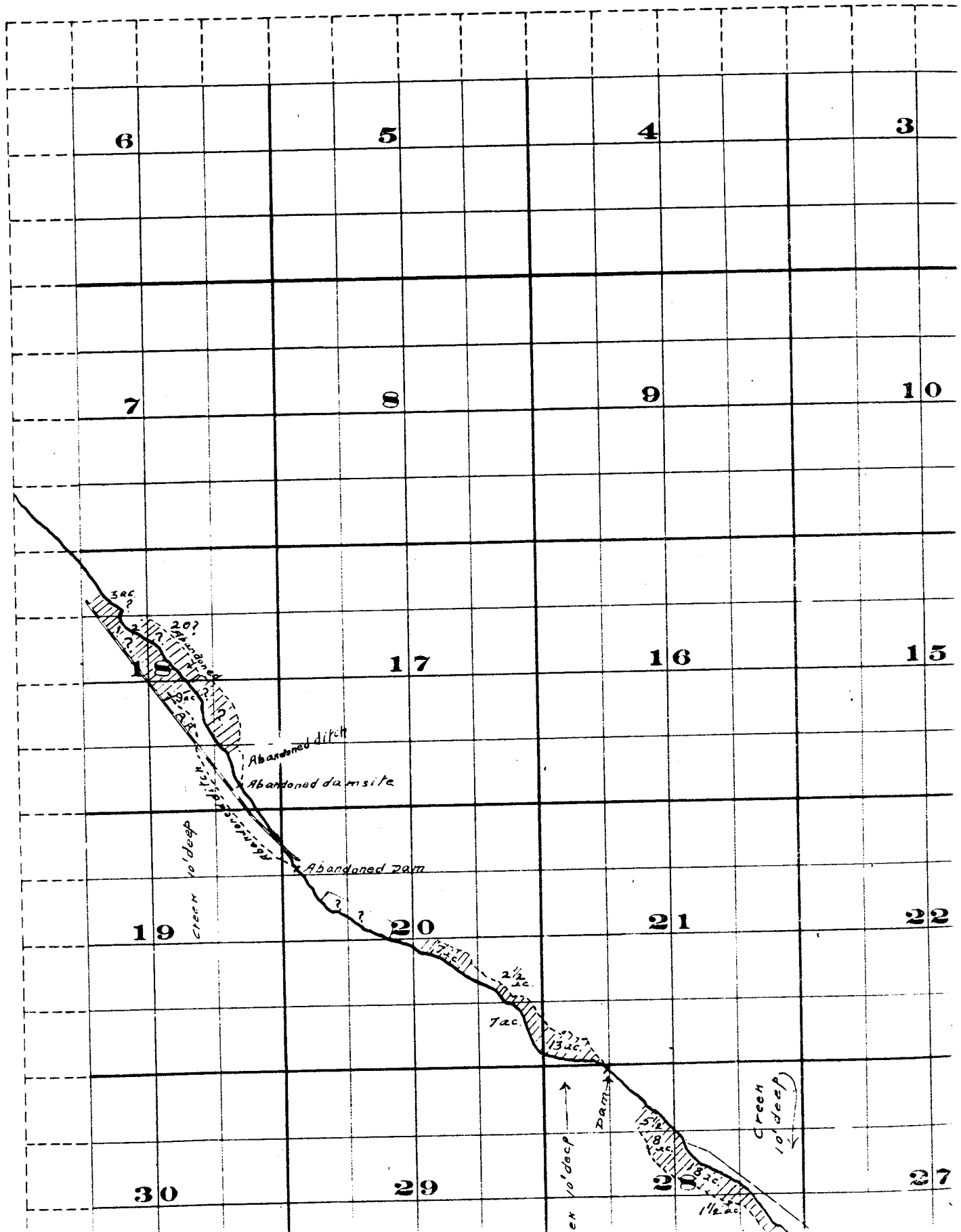
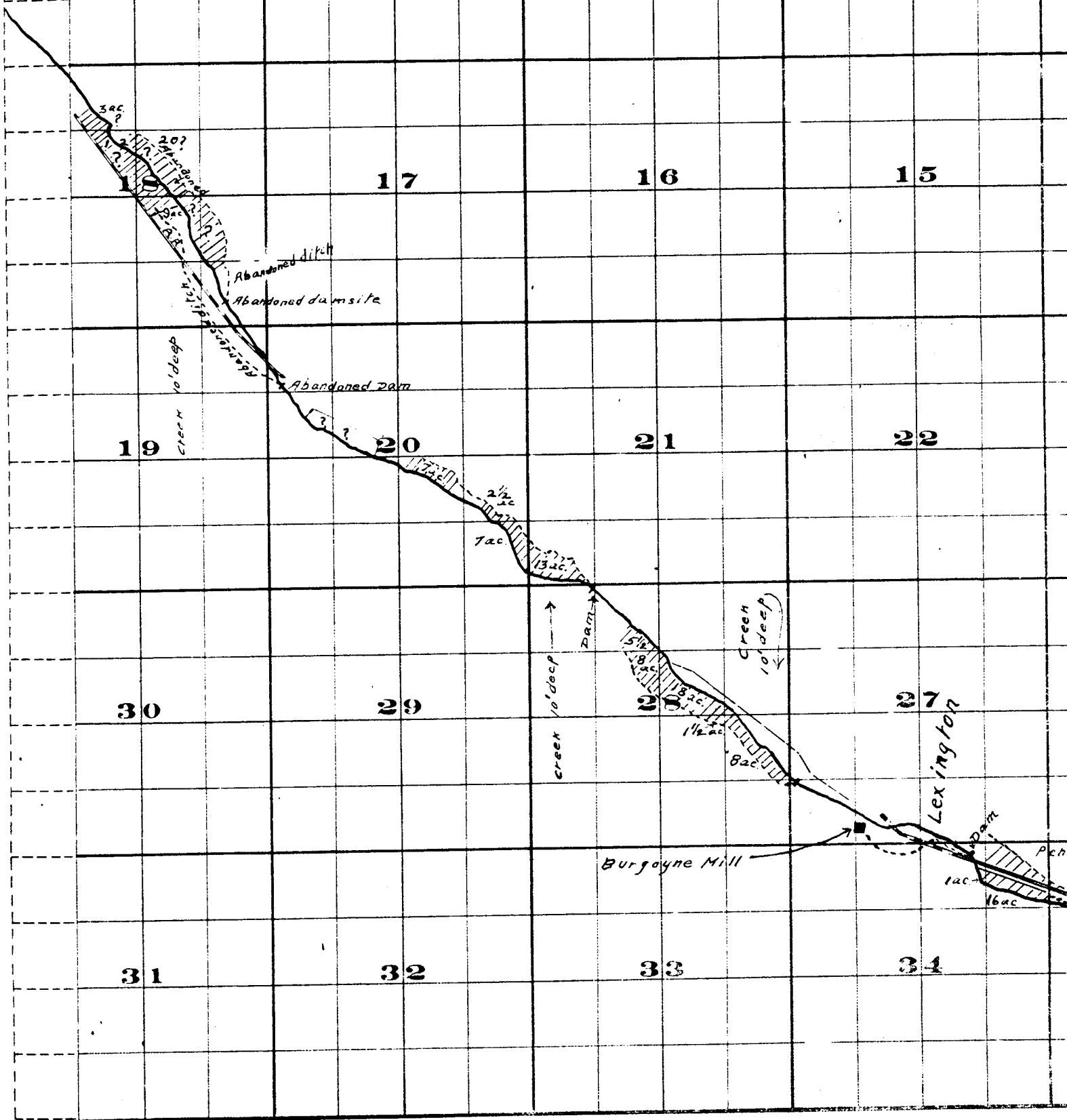


Township 1 S. , R:





THE S. A. REISTOL CO. PRINTERS & BOOKBINDERS, 107 N. 3RD ST.

Surveyed by R. D. Gooper - July 1909
 John H. Lewis - State Engineer
 Examined July 14, 1909.

15

14

13

22

23

24

27

26

25

34

35

36

Lexington

Dam

Pehlund Ditch - Capacity ordinary 1.25 Sec. feet

1ac

16ac

12ac

20ac

15ac

2ac

2ac

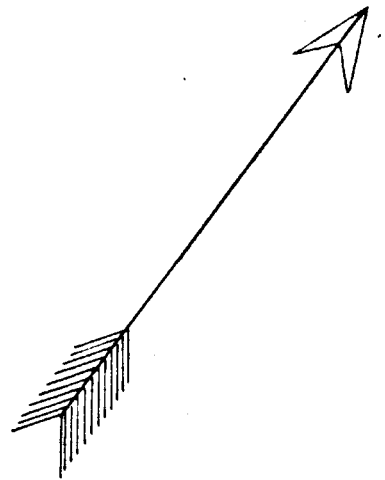
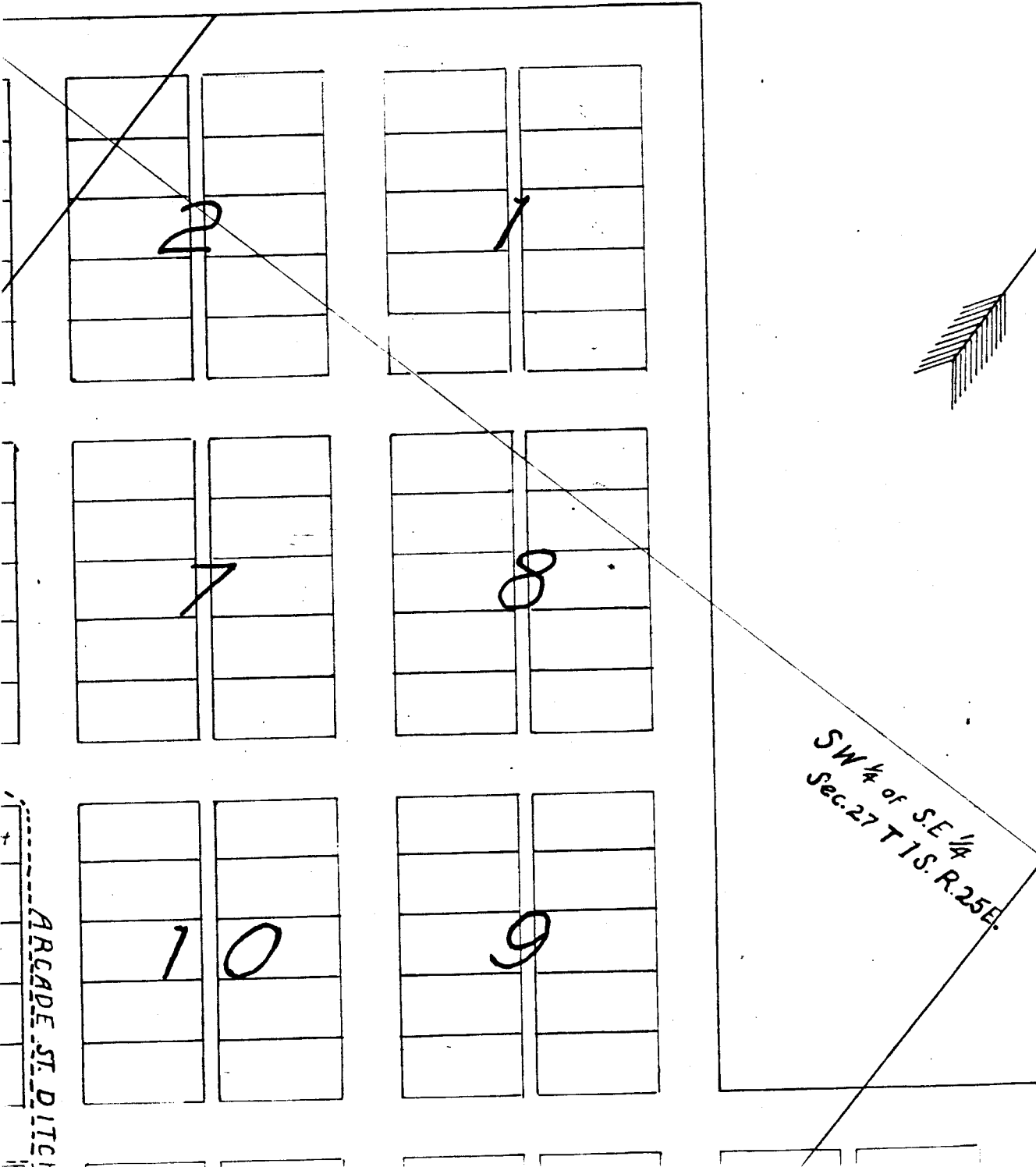
6ac

1ac

FROM OFFICE OF THE STATE ENGINEER, SALEM, OREGON

Willow Creek Adjudication.

TON



SW 1/4 of SE 1/4
Sec. 27 T 1 S. R. 25 E.

ARCADE ST. DITCH

LEXINGTON

2	1

2	2

4	

3	

Sarah Booher	
Sarah Booher	Sarah Booher
Sarah Booher	Sarah Booher
Sarah Booher	Sarah Booher
Sarah Booher	Sarah Booher

Ruth Barnett	
Ruth Barnett	WE Painter

JM White	
JM White	

	Mrs Boothby
	Mrs Boothby
2	4

Joe Eskelson	Mrs. C.A. Benge
Joe Eskelson	W.R. Monkers
Joe Eskelson	W.R. Monkers
Joe Eskelson	W.R. Monkers
Joe Eskelson	W.R. Monkers

WE Leach	WG Scott
Breeding	WG Scott
E.A. Bolach Trustee for Congregational Church	WG Scott
	Mrs. Beymer
	Mrs. Beymer

Mill Race Ellis John John John

ARCADE ST. DITCH



1 Lot = 1/6 Acre

Note - Lots in Which Names Are Shown Are Irrigated

John H. Lewis - State Engineer Examined J.

7	

8	

10	

9	

SW 1/4 of SE 1/4
Sec. 27 T 15. R. 25 E.

ARCADE ST. DITCH

John McMillion	
John McMillion	
John McMillion	5
John McMillion	
John McMillion	

J.E. Gentry	A.M. Zink
J.E. Gentry	A.M. Zink
16	F. Beymer
	W.F. Barnett
	W.F. Barnett

Peter McCabe	E.S. Duran
Peter McCabe	E.S. Duran
Peter McCabe	E.S. Duran
W.F. Barnett	E.S. Duran

18	
Mrs. Beymer	
Mrs. Beymer	

	Frank Parker
W.B. McAllister	Roy McAllister
W.B. McAllister	Roy McAllister
Mrs. S.J. Boothby	E.W. Moyers
Mrs. S.J. Boothby	E.W. Moyers

PENLAND DITCH

10	1
9	2
8	3
7	4
6	5

All lots numbered the same

Scale 150 Ft. = 1 in

Lexington.

15. 25 E.

mined July 14, 1909.