

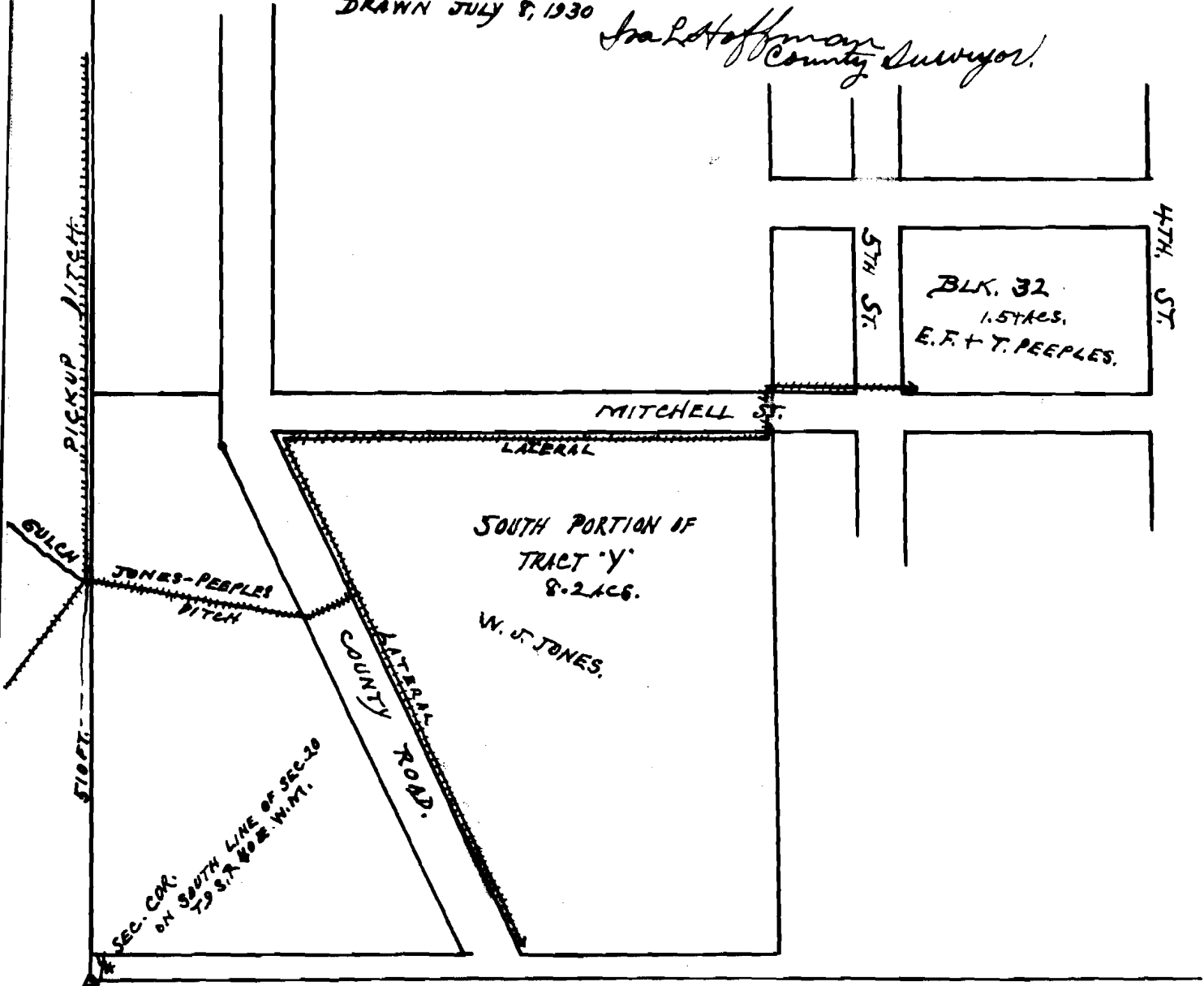
N.

SKETCH

SHOWING

THE LOCATION OF THE
 OF BLK. 32, OWNED BY E.T. & THOR. PEEPLES, AND
 THE SOUTH PORTION OF TRACT 'Y', OWNED BY W. J. JONES,
 ALL IN THE JACKSON ADD. TO BAKER, ORE. AND LYING
 IN THE S.W. 1/4 OF THE S.E. 1/4 OF SEC. 20, T9 S. R40 E, W. 1. M.,
 TOGETHER WITH THE DITCH SUPPLYING WATER THERETO.
 SCALE, ONE INCH = 200 FT.
 DRAWN JULY 8, 1930

Ira L. Hoffman
 County Surveyor.



CERTIFICATE

I, IRA L. HOFFMAN, OF BAKER, ORE. DO HEREBY
 THAT THIS SKETCH WAS MADE FROM COUNTY RECORDS AND
 DATA FURNISHED BY THE APPLICANTS & THAT IT CORRECTLY
 REPRESENTS THE DATA SHOWN THEREON.

Ira L. Hoffman
 REG. PROF. ENGINEER.
 OREGON N290
 NOV. 8, 1919.

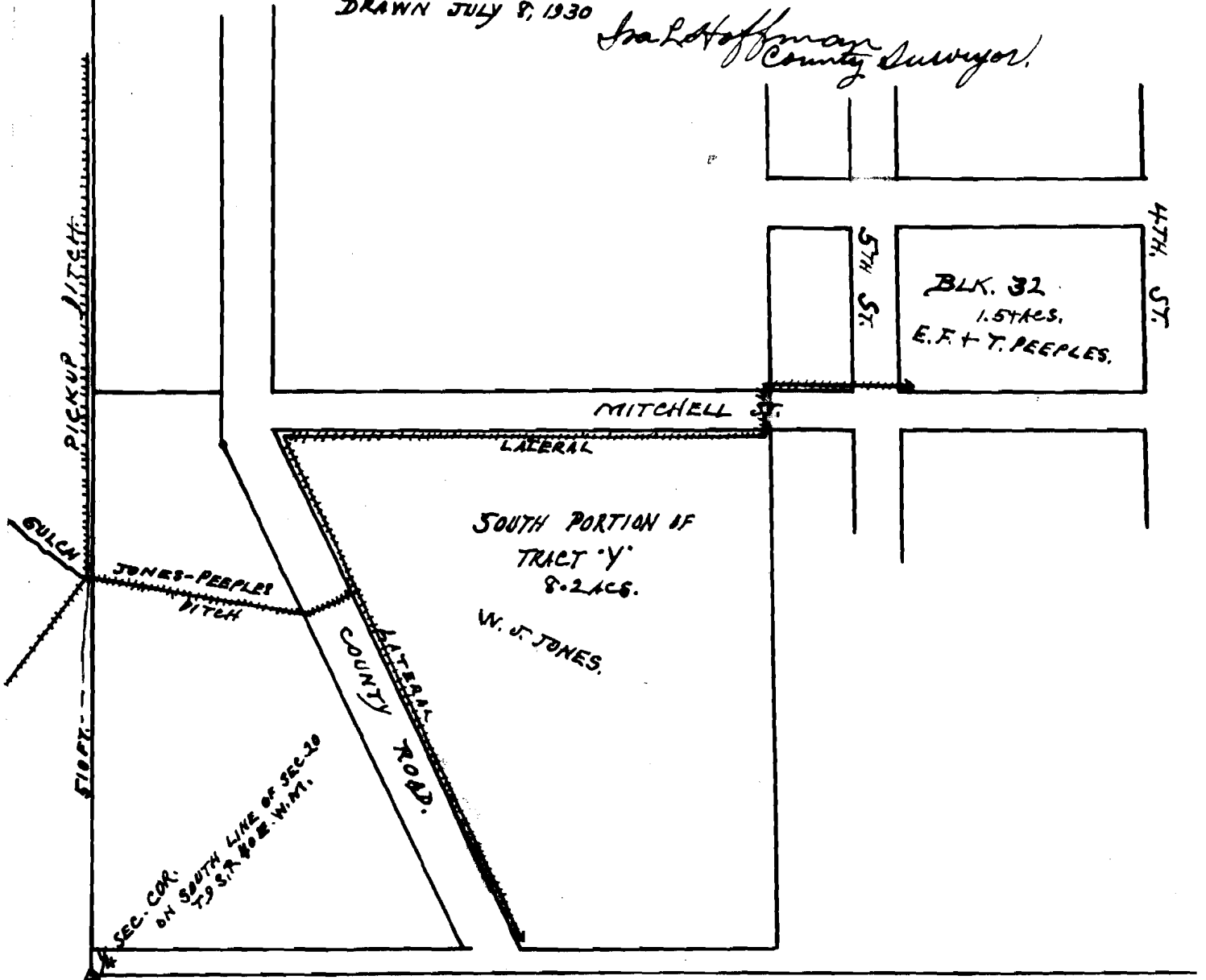
Application No. 13565
 Permit No. 9735

N

SKETCH SHOWING

THE LOCATION OF THE
OF BLK. 32, OWNED BY E.T. THOR. PEEPLES, AND
THE SOUTH PORTION OF TRACT 'Y', OWNED BY W.J. JONES,
ALL IN THE JACKSON RD. TO BAKER, ORE. AND LAYING
IN THE S.W. 1/4 OF THE S.E. 1/4 OF SEC. 20, T9 S. R40 E, W. 1. M.,
TOGETHER WITH THE DITCH SUPPLYING WATER THERETO.
SCALE, ONE INCH = 200 FT.
DRAWN JULY 8, 1930

Ira L. Hoffman
County Surveyor.



CERTIFICATE

I, IRA L. HOFFMAN, OF BAKER, ORE. DO HEREBY
THAT THIS SKETCH WAS MADE FROM COUNTY RECORDS AND
DATA FURNISHED BY THE APPLICANTS & THAT IT CORRECTLY
REPRESENTS THE DATA SHOWN THEREON.

Ira L. Hoffman
REG. PROF. ENGINEER.
OREGON N#90
NOV. 8, 1919.

Application No. 13565
Permit No. 9735