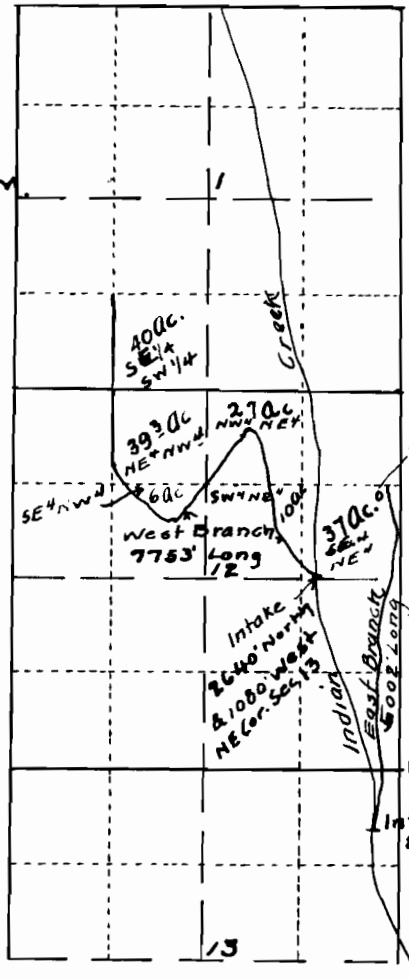


T. 1 S. R. 39 E. W. M.



10,000 Gal
Cistern 100' South
& 260' West NE Cor
SE 1/4 NE 1/4 Sec 12.

Section No. 7161
No. 47 29

NE Cor. Sec. 13.

Intake 924' South
& 211.7' West of
NE Cor. Sec. 13

Map showing land covered by Application of Nannie M. Horn.
Aug 5-1920

Scale 2" = 1 Mile

I, D.J. McEllan, of La Grande, Oregon, do hereby certify that this map was made from notes taken during a survey by me on July 31, 1920, and that it correctly represents the works described in the accompanying application.

D. J. McEllan