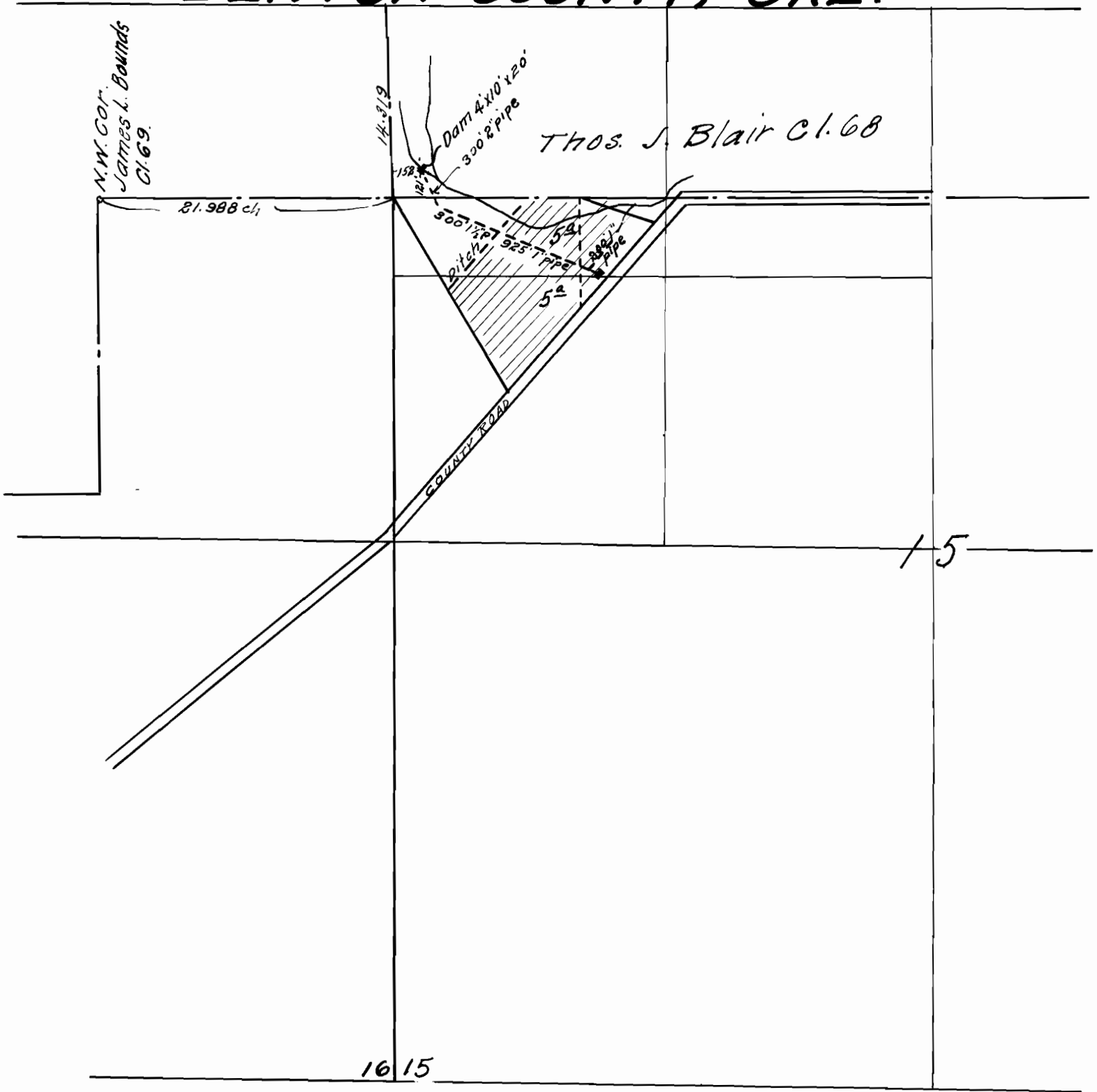


**GREEN WATER WORKS
T. 12 S. R. 6 W.
BENTON COUNTY, ORE.**



I, Walter W. Larsen, of Corvallis, Oregon, do hereby certify that this map was made from notes taken during an actual survey made by me on and before Dec. 15, 1930, and that it correctly represents the works described in the accompanying application, together with the location of streams and other ditches in the immediate vicinity.

Walter W. Larsen
Reg. Prof. Eng.

Ore. No. 1261

Scale: - 1 in. = 10 chains

May 1923