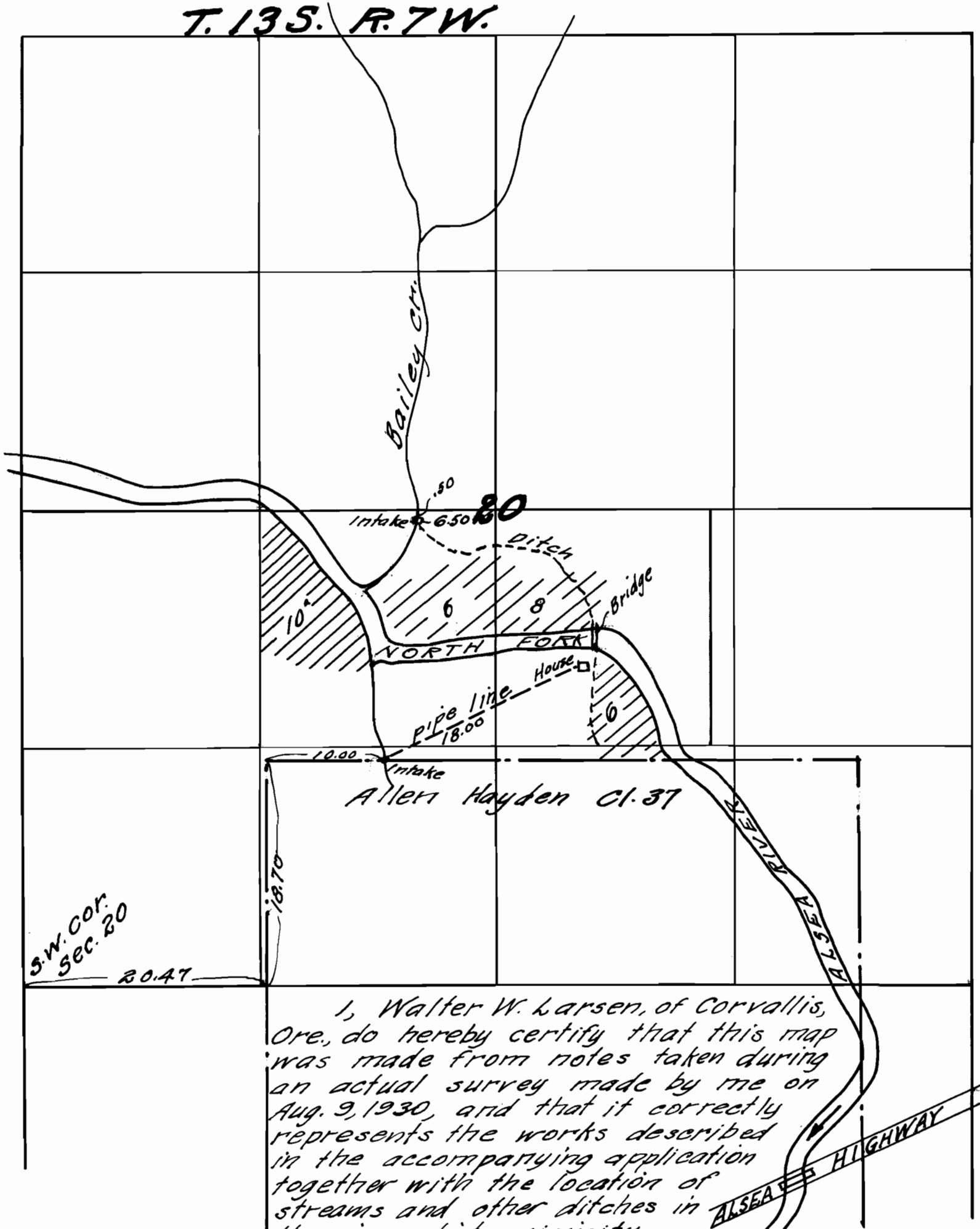


CAREY IRRIGATION WORKS

T. 13 S. R. 7 W.



I, Walter W. Larsen, of Corvallis, Ore., do hereby certify that this map was made from notes taken during an actual survey made by me on Aug. 9, 1930, and that it correctly represents the works described in the accompanying application together with the location of streams and other ditches in the immediate vicinity.

Walter W. Larsen
Registered Professional Engineer

Ore No. 1261
May 11, 1923

Scale: - 1 in = 10 chs.

13653
9780