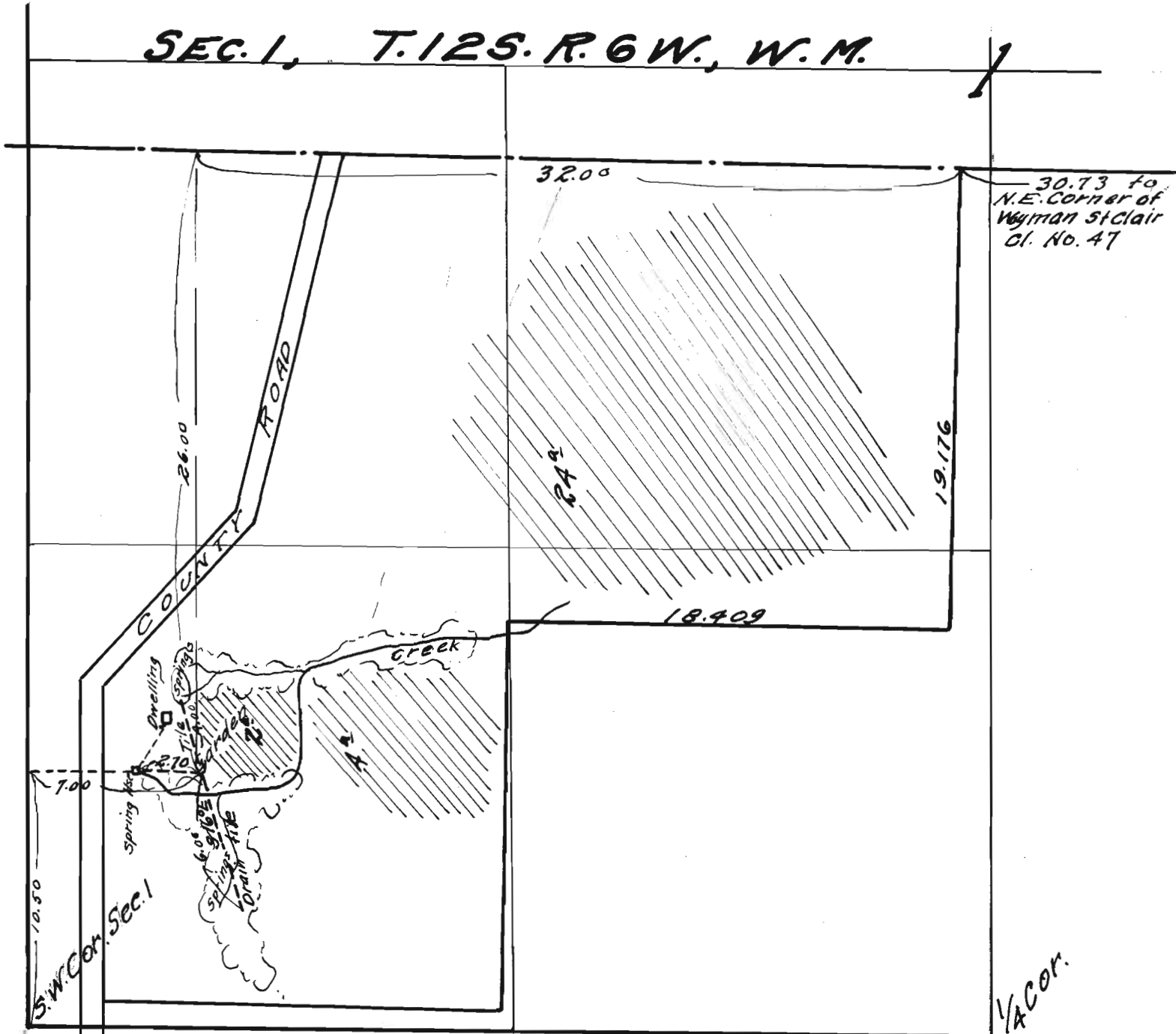


# H. E. FLEMING WATER WORKS

SEC. 1, T. 12 S. R. 6 W., W. M.



I, Walter W. Larsen, of Corvallis, Oregon, do hereby certify that this map was made from notes taken during an actual survey made by me on August 6<sup>th</sup>, 1930 and that it correctly represents the works described in the accompanying application together with the location of streams and other ditches in the immediate vicinity.

Walter W. Larsen  
Registered Professional Engineer

Ore. No. 1261  
May 11, 1923

Scale 1 in. = 6 chains.

Application No. 13657  
Permit No. 9865