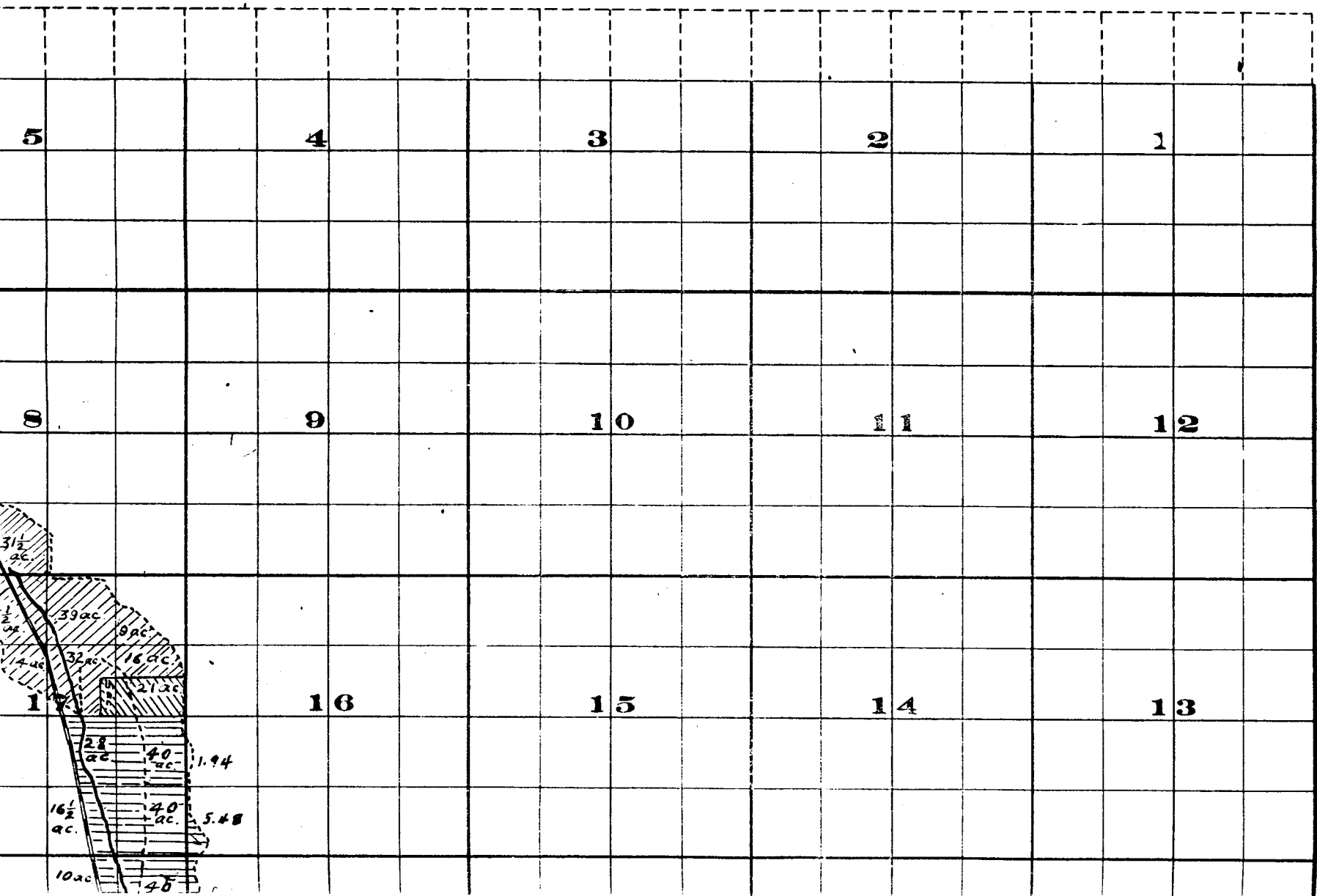
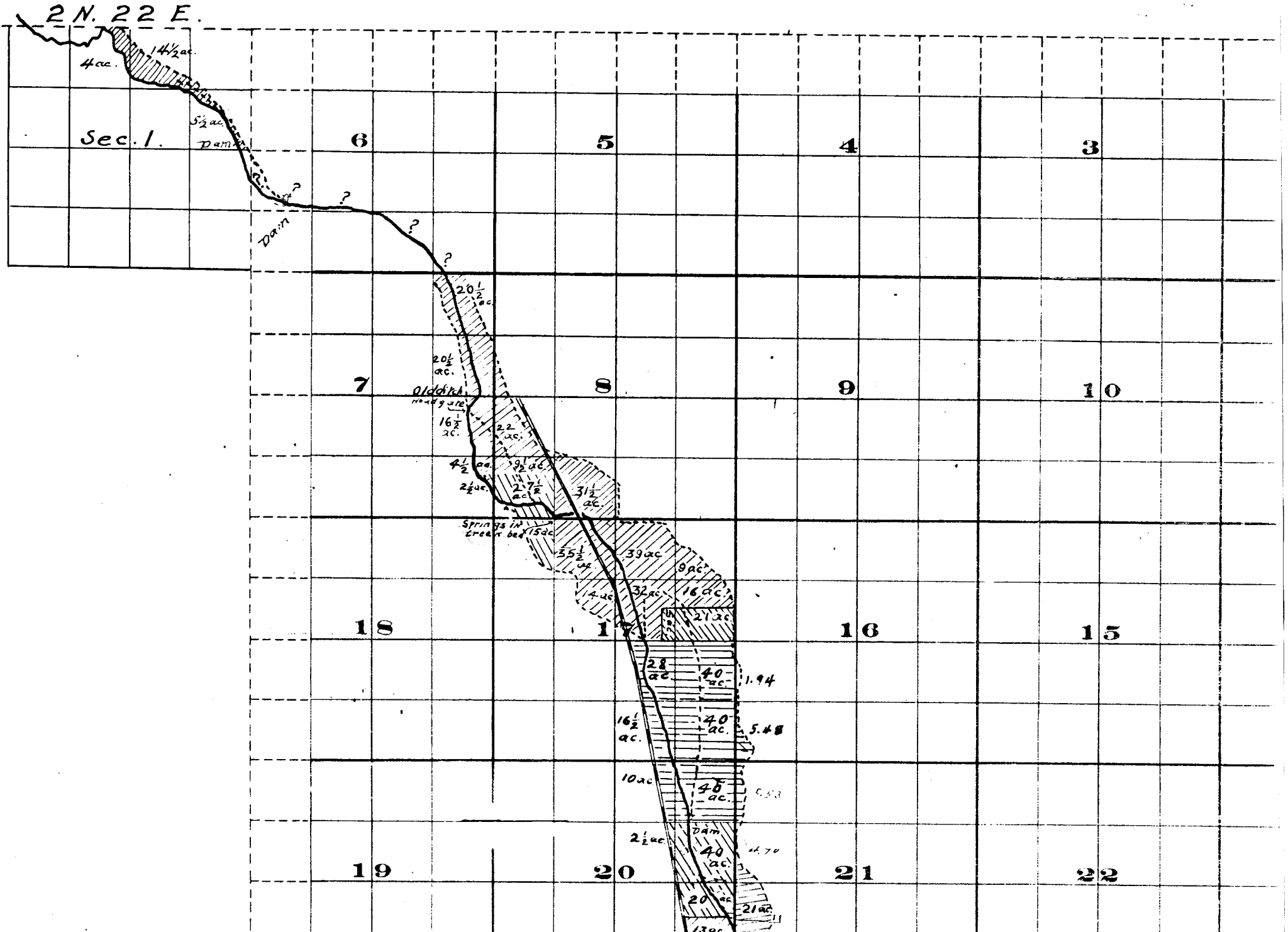
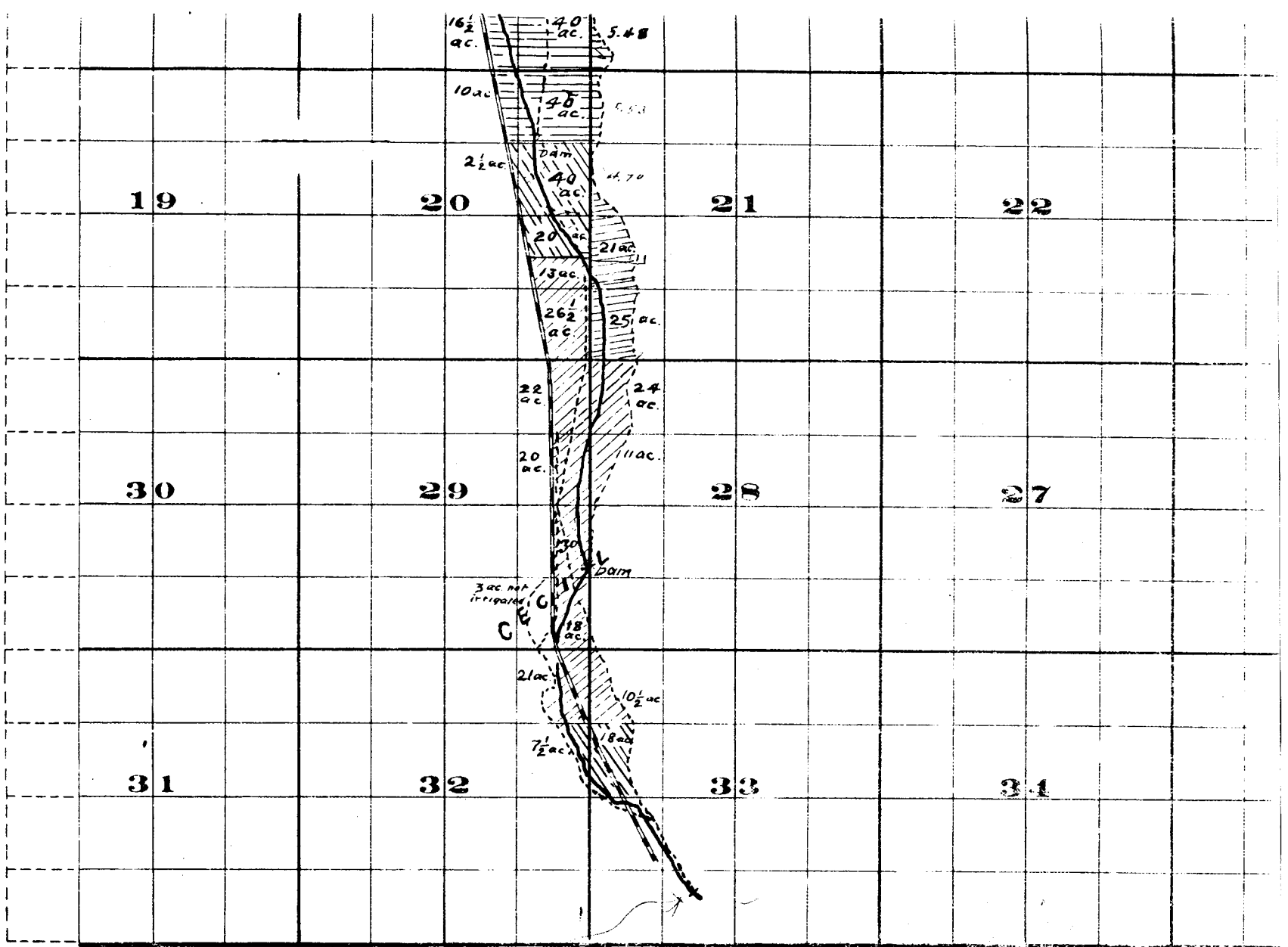


ship 2 N. , Range 23 E.W.M.



Township 2 N. , Range





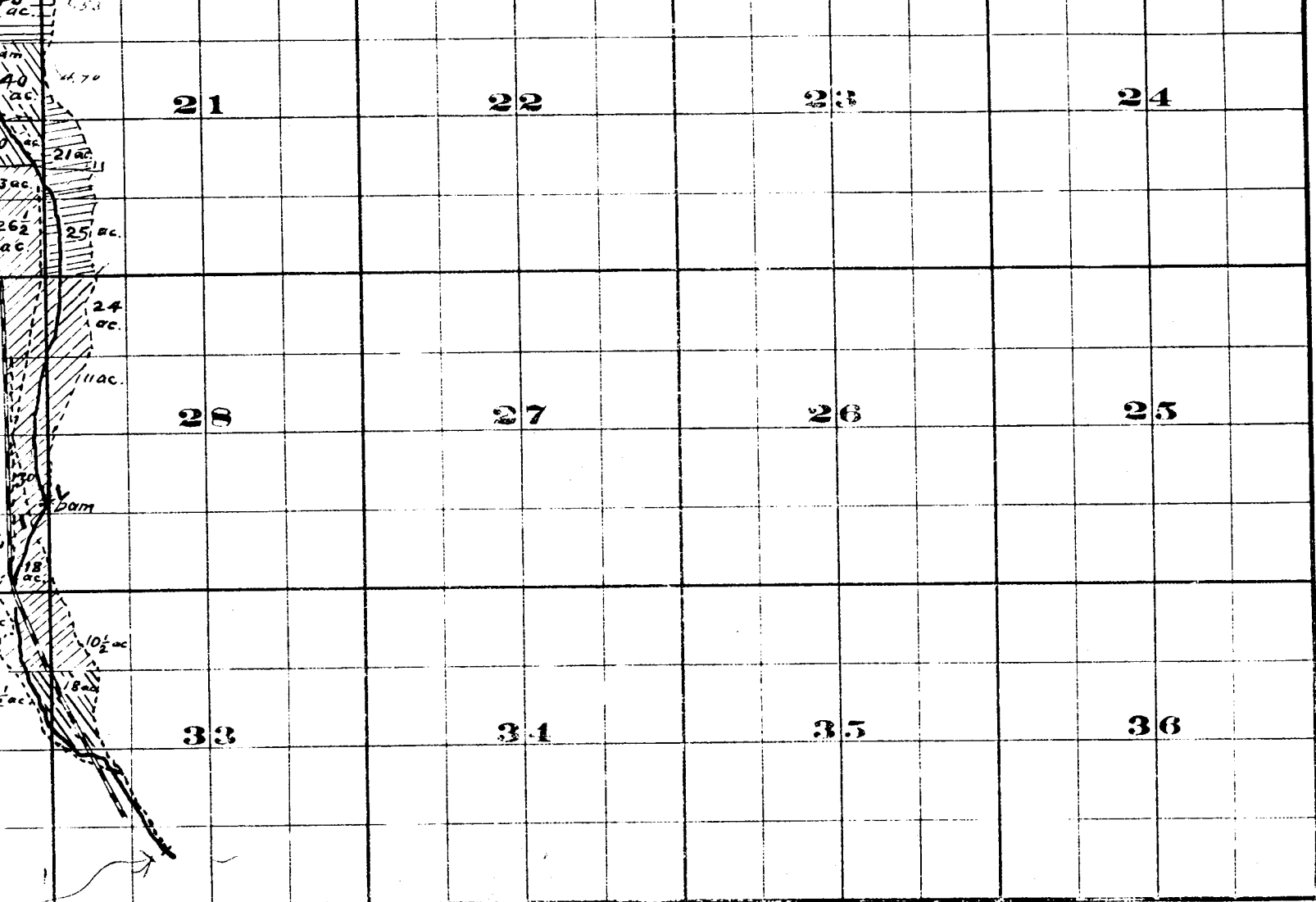
THE S. B. BROS. CO. PRINTERS & BOOK BINDER, CHICAGO, ILL.

Surveyed by H. K. Donnelly July 1909.

John H. Lewis - State Engineer.

Examined July 14, 1909.

Willis



FROM OFFICE OF THE STATE ENGINEER, SALEM, OREGON

Willow Creek Adjudication.

July 14, 1909.

State Engineer.

July 14, 1909.

*2 N. 22 E.
2 N. 23 E.*