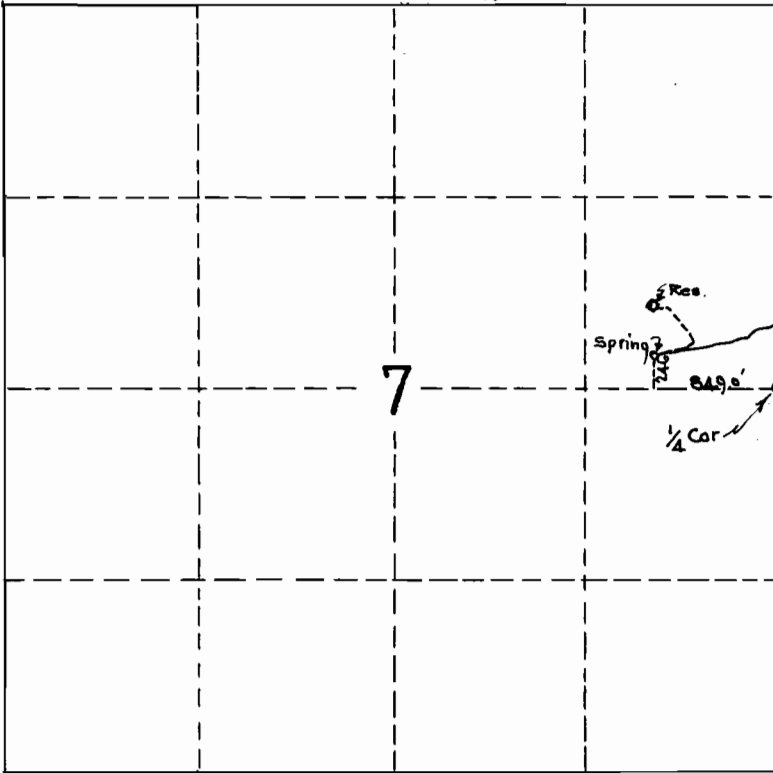


A-15583

MAP TO ACCOMPANY APPLICATION OF F.B. SKINNER, TO APPROPRIATE WATER FROM UN NAMED SPRING SITUATED IN THE SE 1/4 OF THE NE 1/4 OF SECTION 7 T.2S.R.2E. W.M. CLACKAMAS COUNTY OREGON.

SEC. 7 T.2S.R.2E. W.M.

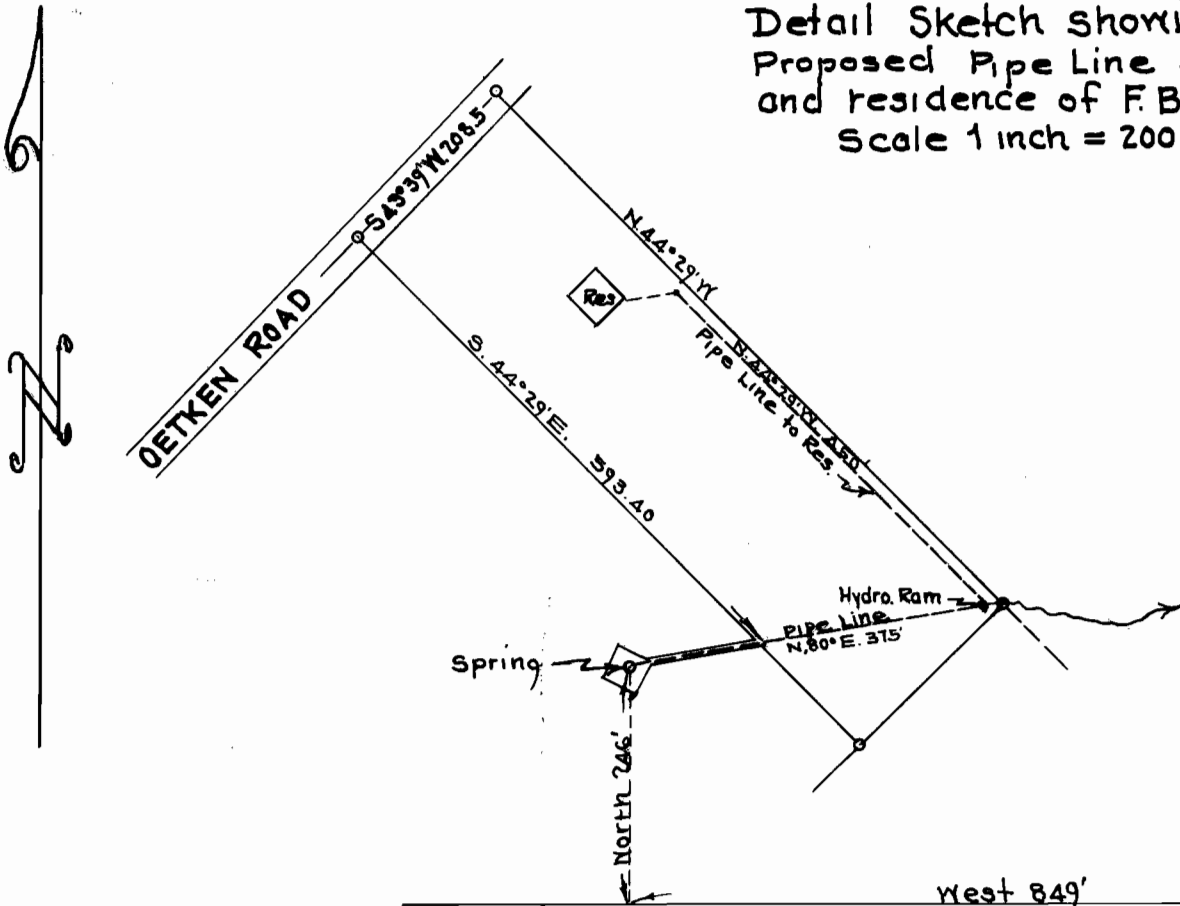
SCALE 1 INCH = 1/4 MILE.



NOTE - Water to be used for Domestic Supplies.



Detail Sketch showing SPRING, Proposed Pipe Line and Hydraulic Ram, and residence of F.B. Skinner. Scale 1 inch = 200 feet.



D. A. Meldrum

App. No. 15583
Per. No. 11468

Stone 1/4 Cor. bet. Sec 7 & 8