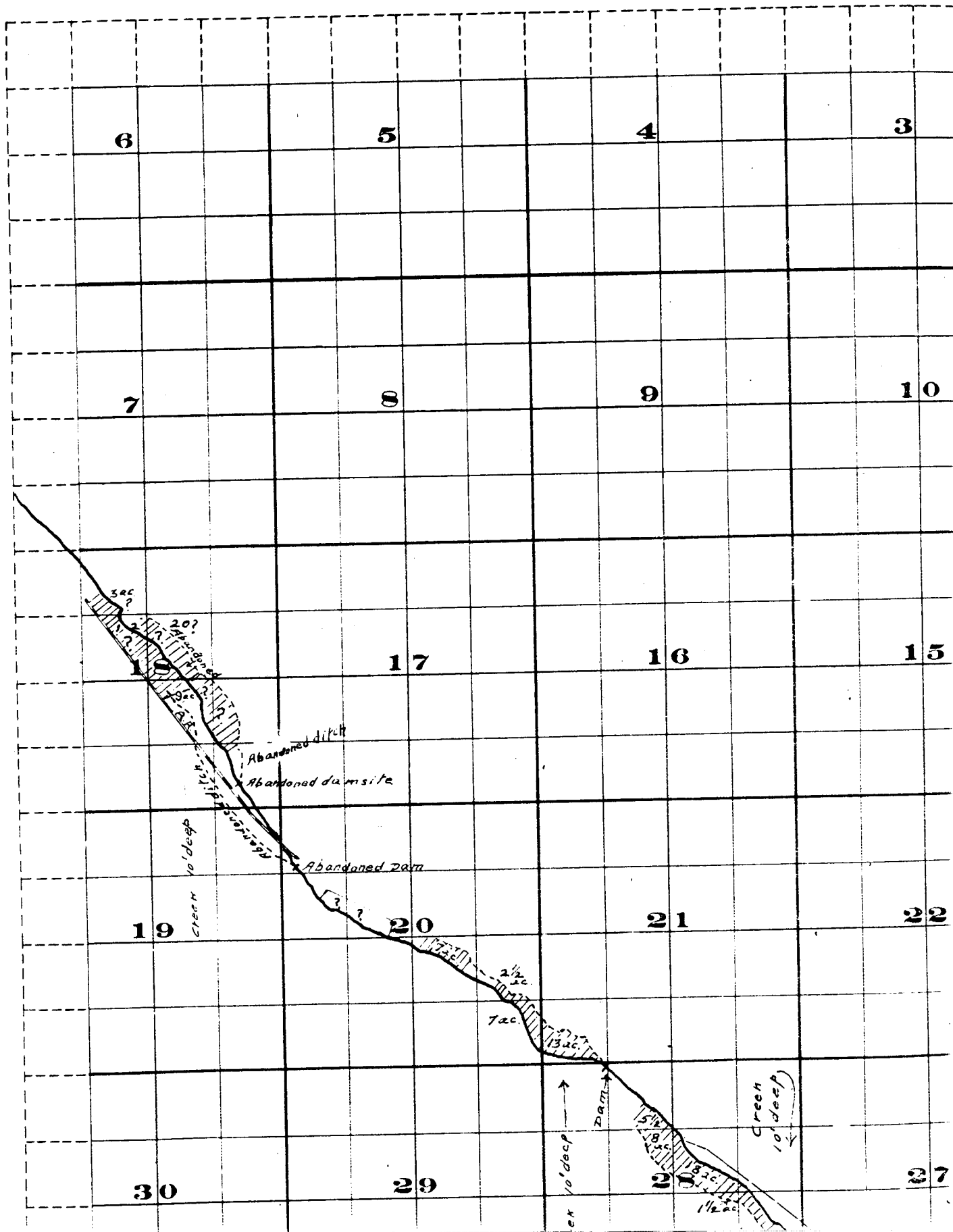
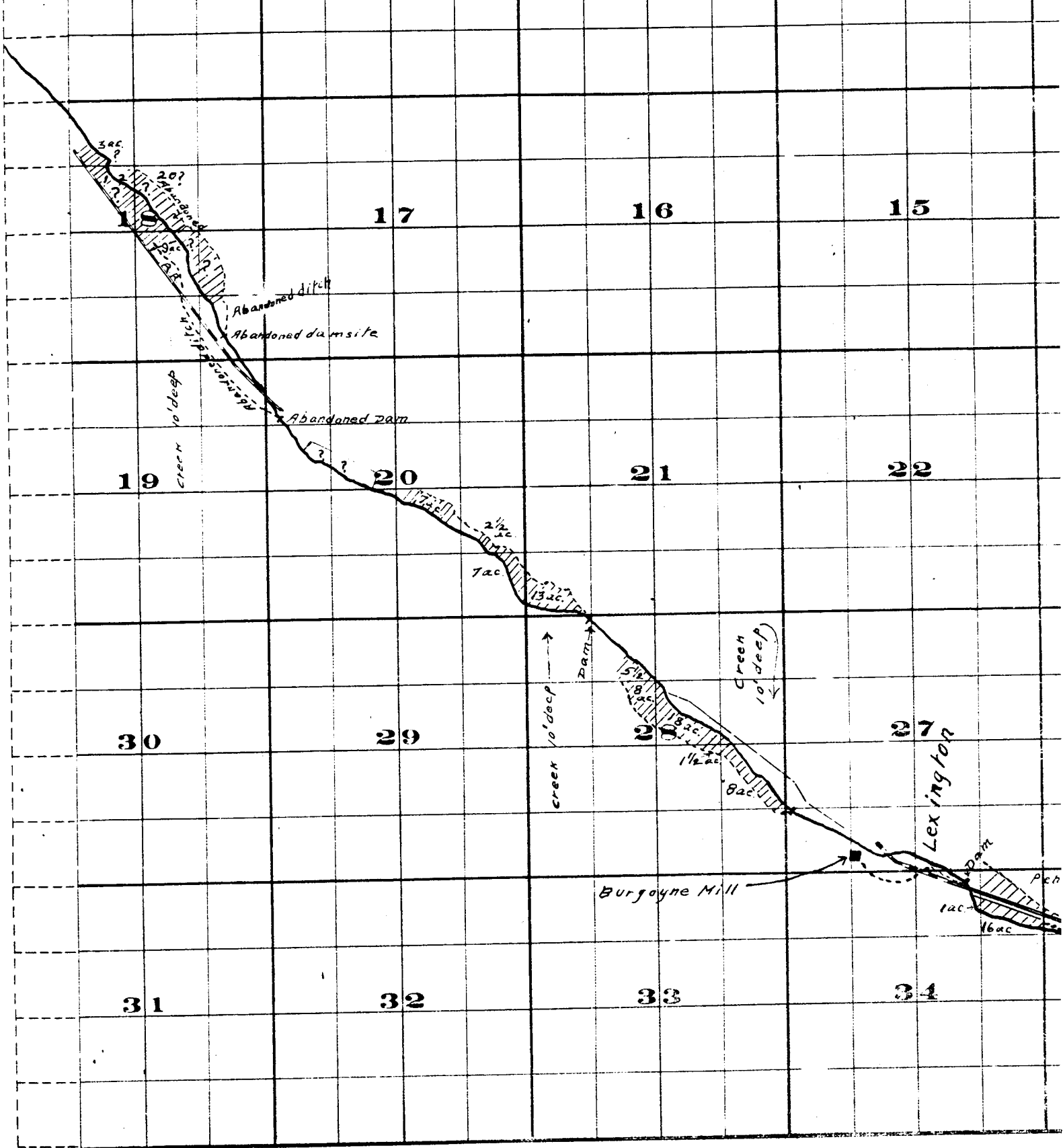


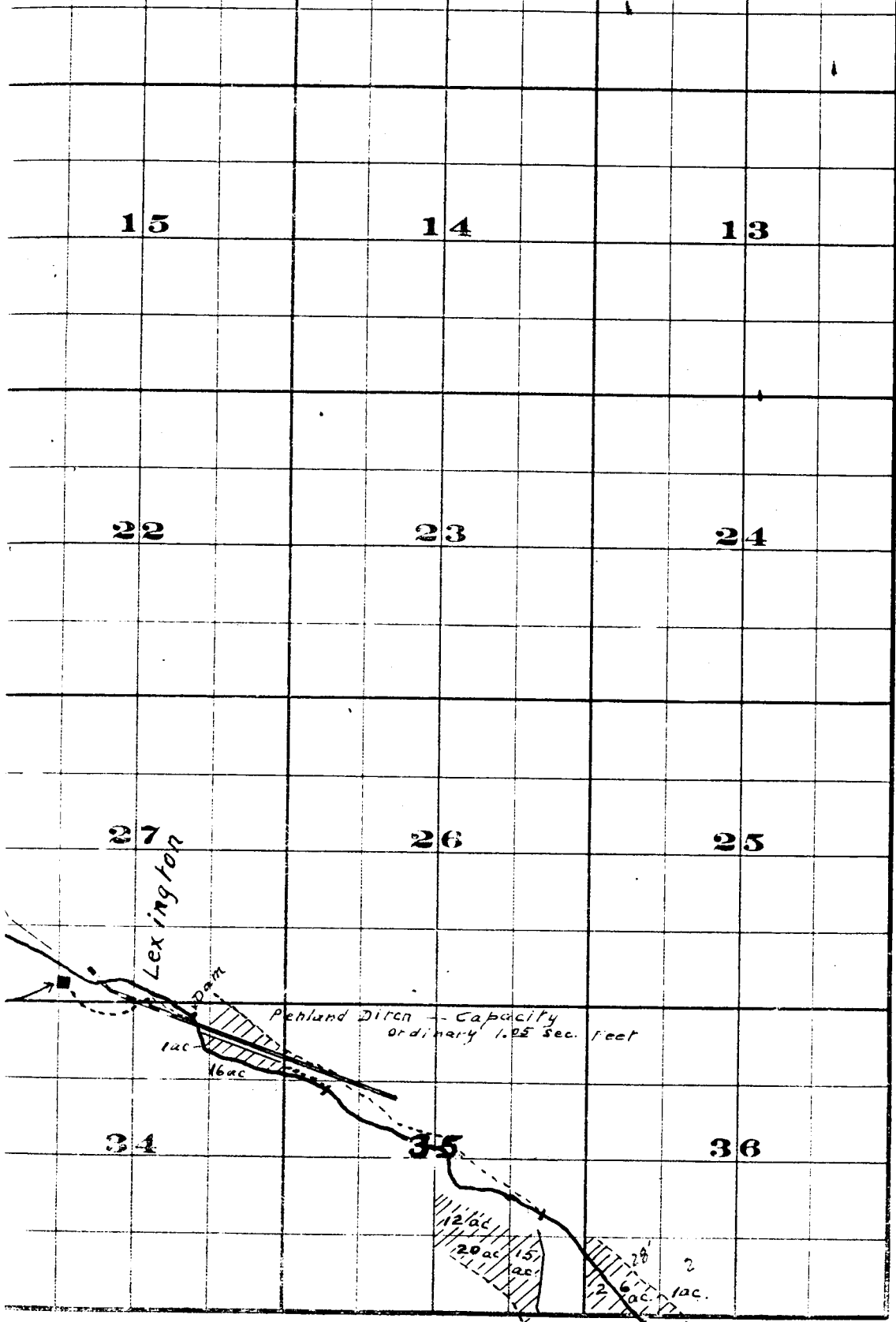
Township 1 S. , R.





THE S. BRISTOL CO. PRINTERS & BOOKBINDERS, 117 N. 3RD ST. W.C.

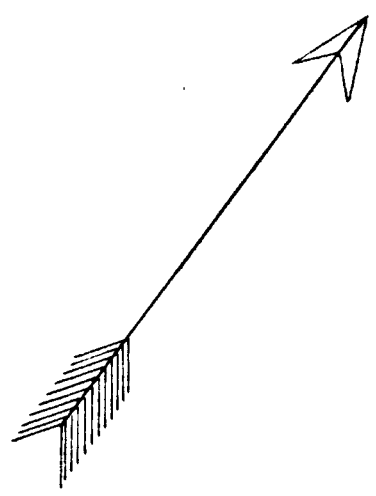
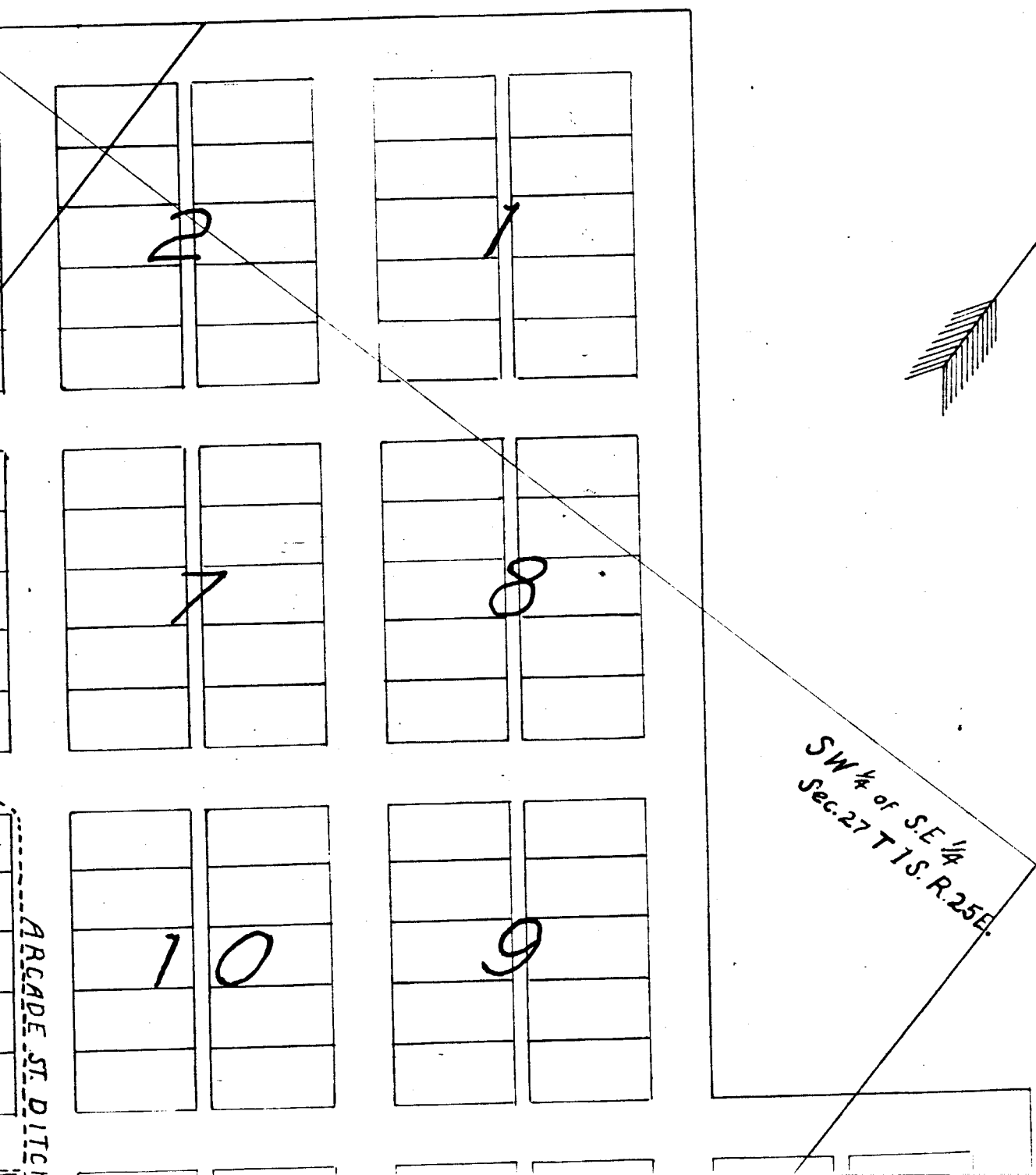
Surveyed by R.D. Gooper - July 1909
 John H. Lewis - State Engineer
 Examined July 14, 1909.



FROM OFFICE OF THE STATE ENGINEER, SALEM, OREGON

Willow Creek Adjudication.

TON



LEXINGTON

2	1

2	2

4	

Sarah Booher	
Sarah Booher	Sarah Booher
Sarah Booher	Sarah Booher
Sarah Booher	Sarah Booher
Sarah Booher	Sarah Booher
Sarah Booher	Sarah Booher

Ruth Barnett	
Ruth Barnett	WE Pointer

JM White	
JM White	

	Mrs Boothby
	Mrs Boothby
2	

Joe Eskelson	Mrs. C.A. Benge
Joe Eskelson	W.A. Monkers
Joe Eskelson	W.A. Monkers
Joe Eskelson	W.A. Monkers
Joe Eskelson	W.A. Monkers

WE Leach	WG Scott
Breeding	WG Scott
E.A. Bolch Trustee for Congregational Church	WG Scott
	Mrs. Beymer
	Mrs. Beymer

Mill Race

Ellis

John

ARCADE ST. DITCH

John



1 Lot = 1/6 Acre

Note - Lots in Which Names Are Shown Are Irrigated

John H. Lewis - State Engineer Examined J

7	

8	

10	

9	

SW 1/4 of SE 1/4
Sec. 27 T 15. R. 25 E.

ARCADE ST. DITCH

John McMillion	
John McMillion	
John McMillion	5
John McMillion	
John McMillion	

J.E. Gentry	A.M. Zink
J.E. Gentry	A.M. Zink
1	6 Beymer
	W.F. Barnett
	W.F. Barnett

Peter McCabe	E.S. Duran
Peter McCabe	E.S. Duran
Peter McCabe	E.S. Duran
W.F. Barnett	E.S. Duran

1	8
Mrs. Beymer	
Mrs. Beymer	

	Frank Parker
W.B. McAllister	Roy McAllister
W.B. McAllister	7 Roy McAllister
Mrs. S.J. Boothby	E.W. Moyers
Mrs. S.J. Boothby	E.W. Moyers

10	1
9	2
8	3
7	4
6	5

PENLAND DITCH

All lots numbered the same

Scale 150 Ft. = 1 in

Lexington.

15. 25 E.

mined July 14, 1909.