

### MAP

To accompany application of E.T. BATESON for Permit to appropriate Water from un-named branch of Clear Creek for beneficial use.

Location of Dam and intake to pipe line N.11°00'E. 790 ft. distant from SW. Cor. Sec. 11. T.3S.R3E. W.M.

Course of pipe Line N.74°30'W. 960 ft. to Reservoir  
 Location of Dam in Ditch to form Reservoir N.40°W. 1400 feet distant from SW. Cor. of Sec. 11

Scale 2 inches = 1 mile.

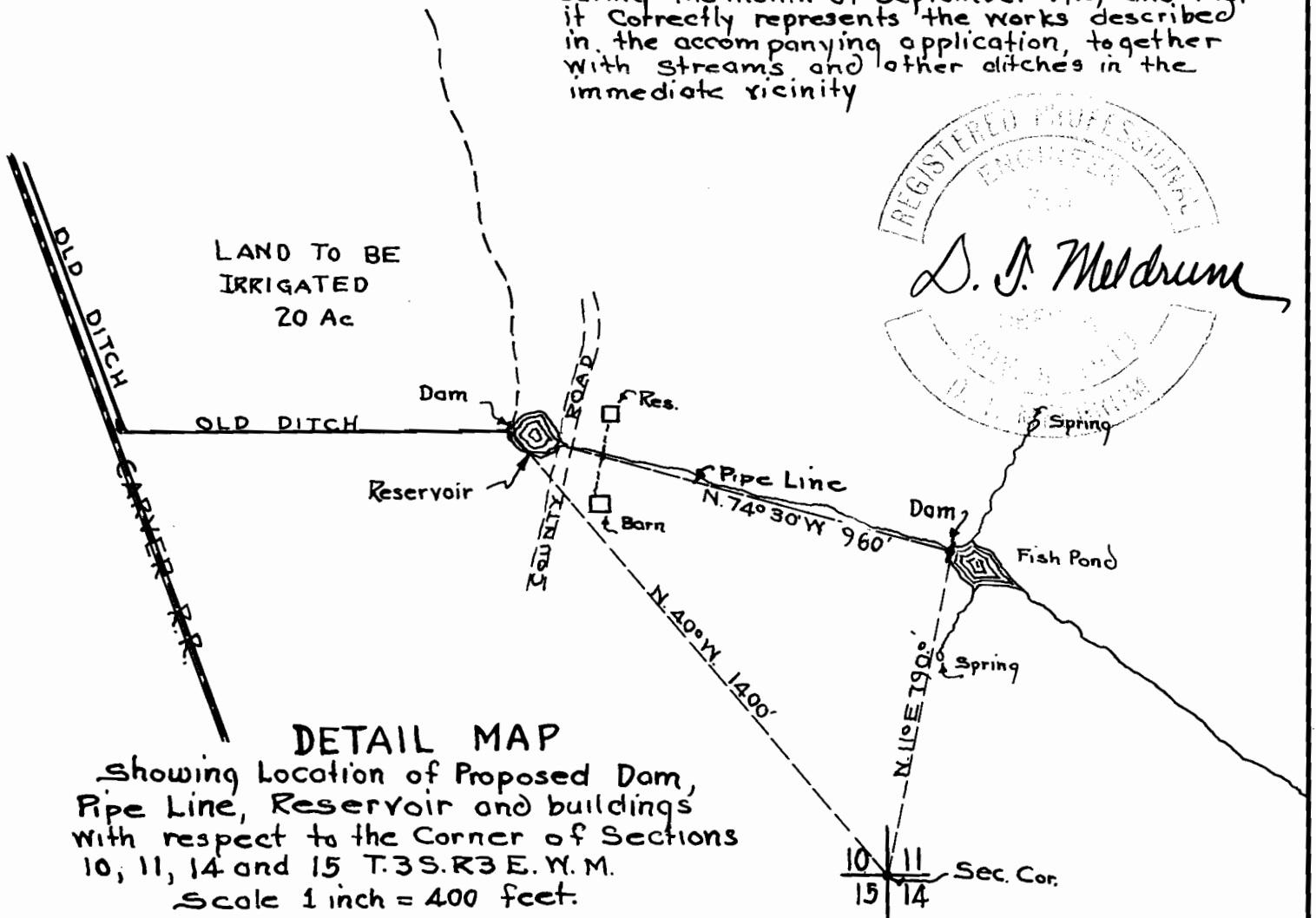
**T.3 S. R. 3 E. W. M.  
 CLACKAMAS COUNTY ORE,**

### CERTIFICATE.

I, D.T. Meldrum, do hereby certify that the within map was made from notes taken during an actual survey made under my supervision during the month of September 1929 and that it correctly represents the works described in the accompanying application, together with streams and other ditches in the immediate vicinity



*D. T. Meldrum*



### DETAIL MAP

Showing Location of Proposed Dam, Pipe Line, Reservoir and buildings with respect to the Corner of Sections 10, 11, 14 and 15 T.3S.R3E. W.M.

Scale 1 inch = 400 feet.

Application No. R-13056  
 R 626