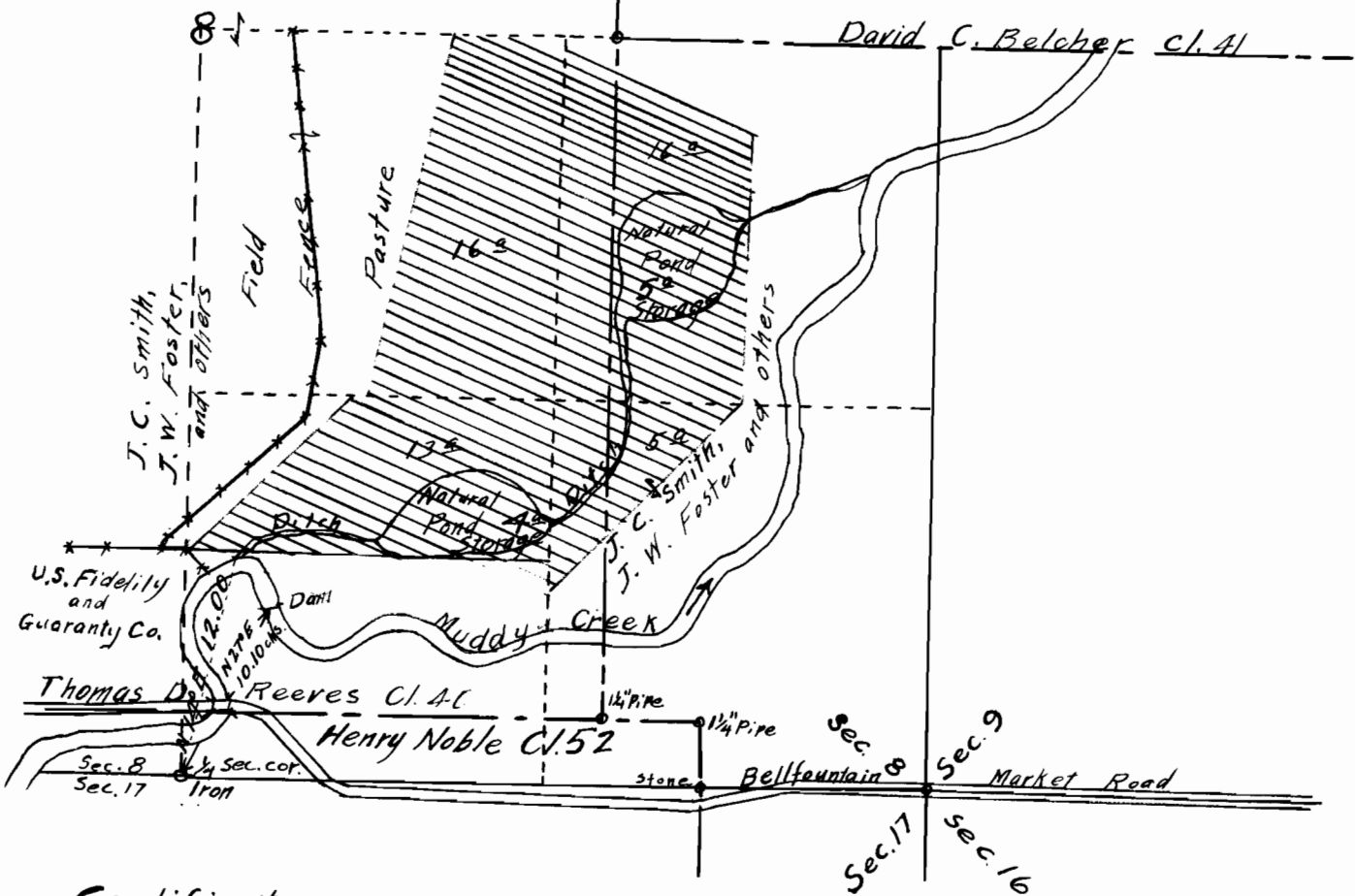


FOSTER IRRIGATION WORKS

SECTION 8 T.14 S. R.5 W. W. M.

BENTON COUNTY, OREGON

Scale 1" = 10 chains.



Certificate:

I, Walter C. Galloway, of Corvallis, Oregon, do hereby certify that this map was made from notes of an actual survey made by me on September 7, 1932 and that it correctly represents the works described in the accompanying application together with the location of streams and other ditches in the immediate vicinity.

Walter C. Galloway
Reg. Prof. Engr. #44.

14867 Jan, 13, 1933.
10827