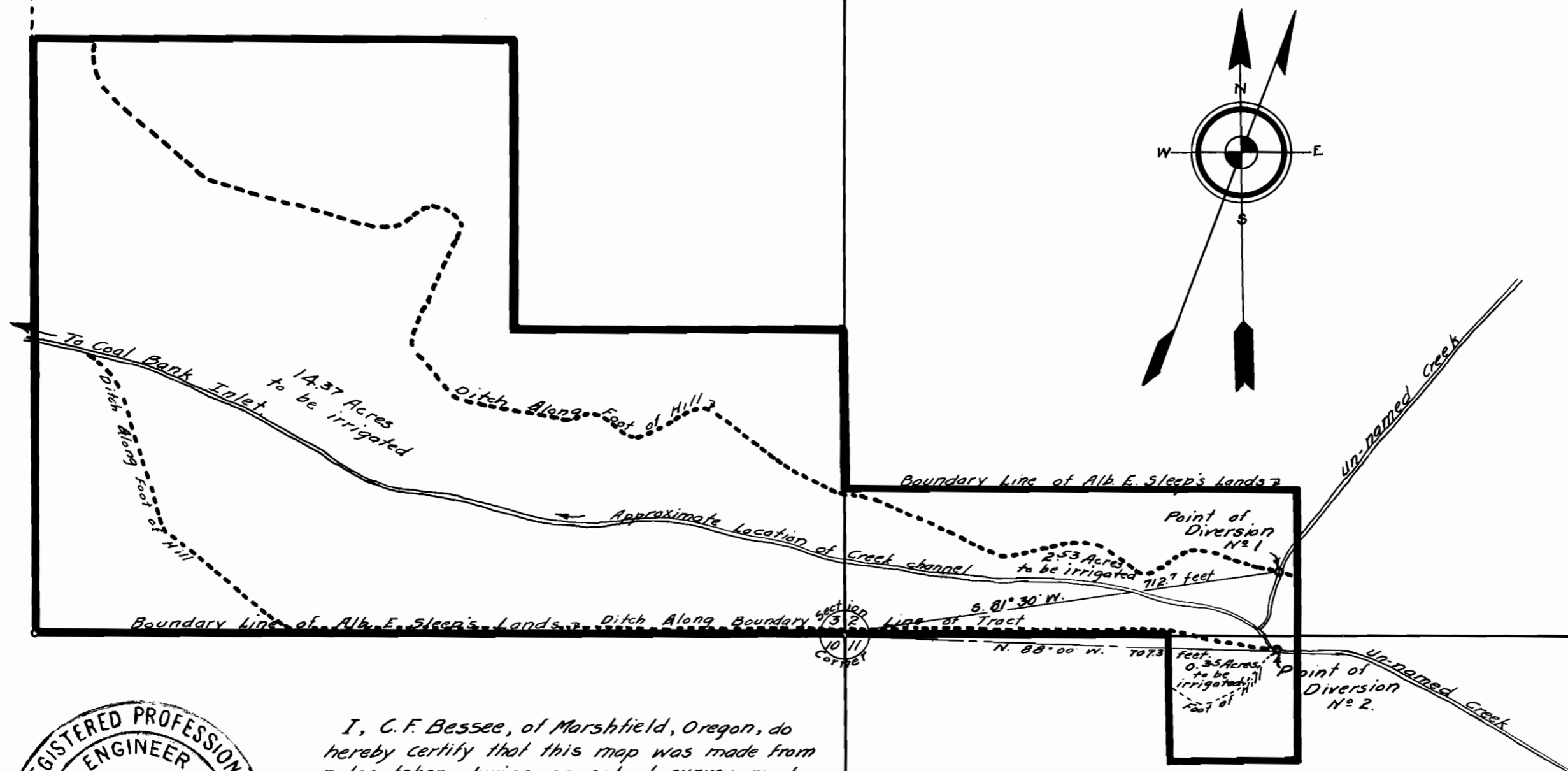


SE 1/4 SE 1/4 SECTION 3.

SW 1/4 SW 1/4 SECTION 2



I, C. F. Bessee, of Marshfield, Oregon, do hereby certify that this map was made from notes taken during an actual survey made by me on the 21st day of April, 1933; and that it correctly represents the location of the points of diversion, together with the location of the ditches to be constructed and the areas to be irrigated.

C. F. Bessee.

NW 1/4 NW 1/4 SECTION 11

PLAN ACCOMPANYING APPLICATION OF
ALBERT E. SLEEP
FOR RIGHT TO APPROPRIATE WATER
FROM TWO BRANCHES OF
AN UN-NAMED CREEK
IN SW 1/4 SW 1/4 SECTION 2 AND NW 1/4 NW 1/4 SECTION 11
IN TOWNSHIP 26 SOUTH, RANGE 13 WEST, W. M.

SCALE: 1 INCH = 200 FEET.

Application No. 14909
Permit No. 10867