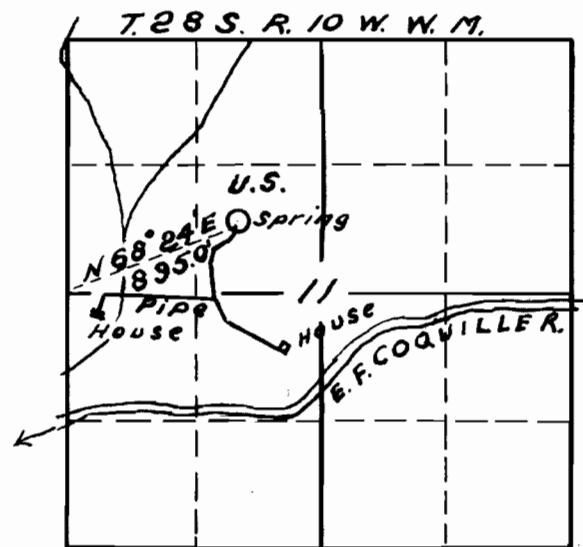
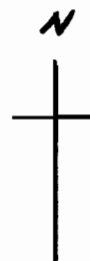


Map
accompanying application of
ELMER WILSON
to appropriate water.



Scale 1 in. = 2000.0 Ft.

App. No. 16113
Per. No. 11927

I, J. N. Gearhart, of Myrtle Point, Oregon, do hereby certify that this map was made from notes taken during an actual survey made by me on Oct. 16, 1935, and that it correctly represents the works described in the accompanying application, together with the location of streams in the immediate vicinity.

J. N. Gearhart