

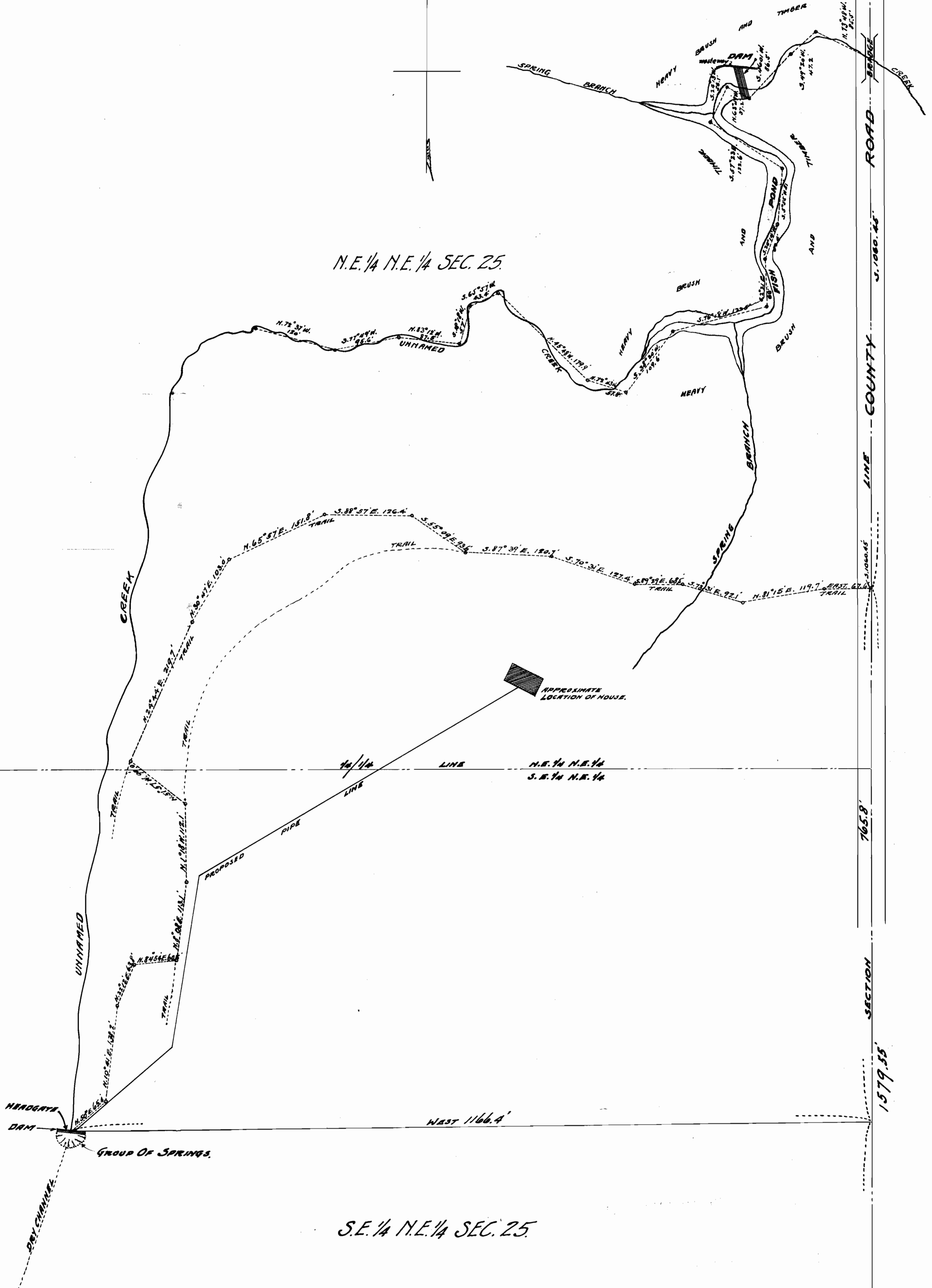
SECTION COUNTY ROAD LINE

N. 1/4 N.E. 1/4
E. 1/4 N.E. 1/4

N. 1/4 N.E. 1/4
E. 1/4 N.E. 1/4



N.E. 1/4 N.E. 1/4 SEC. 25.



S.E. 1/4 N.E. 1/4 SEC. 25.

MAP

Accompanying Application For Permit To appropriate Water From Unnamed Springs.

The S.E. 1/4 of N.E. 1/4 of Section 25, of Twp 15, of Range 2 E, W. M.

Scale, 1 inch = 100 ft.

CERTIFICATE OF SURVEYOR.

I, P. M. HALL-LEWIS, of Portland, Oregon, do hereby certify that this map was made from notes taken during an actual survey made by me on April 29th and 30th, and May 1st, 1926, and that it correctly represents the works described in the accompanying application, together with the location of streams and other ditches in the immediate vicinity.

P. M. Hall-Lewis
Surveyor.



STATE ENGINEER RECEIVED
MAY 13 1926

1/4 SECTION LINE

Application No. ~~10687~~ 15419
Permit No. 7348 11315

SECTION 25 30