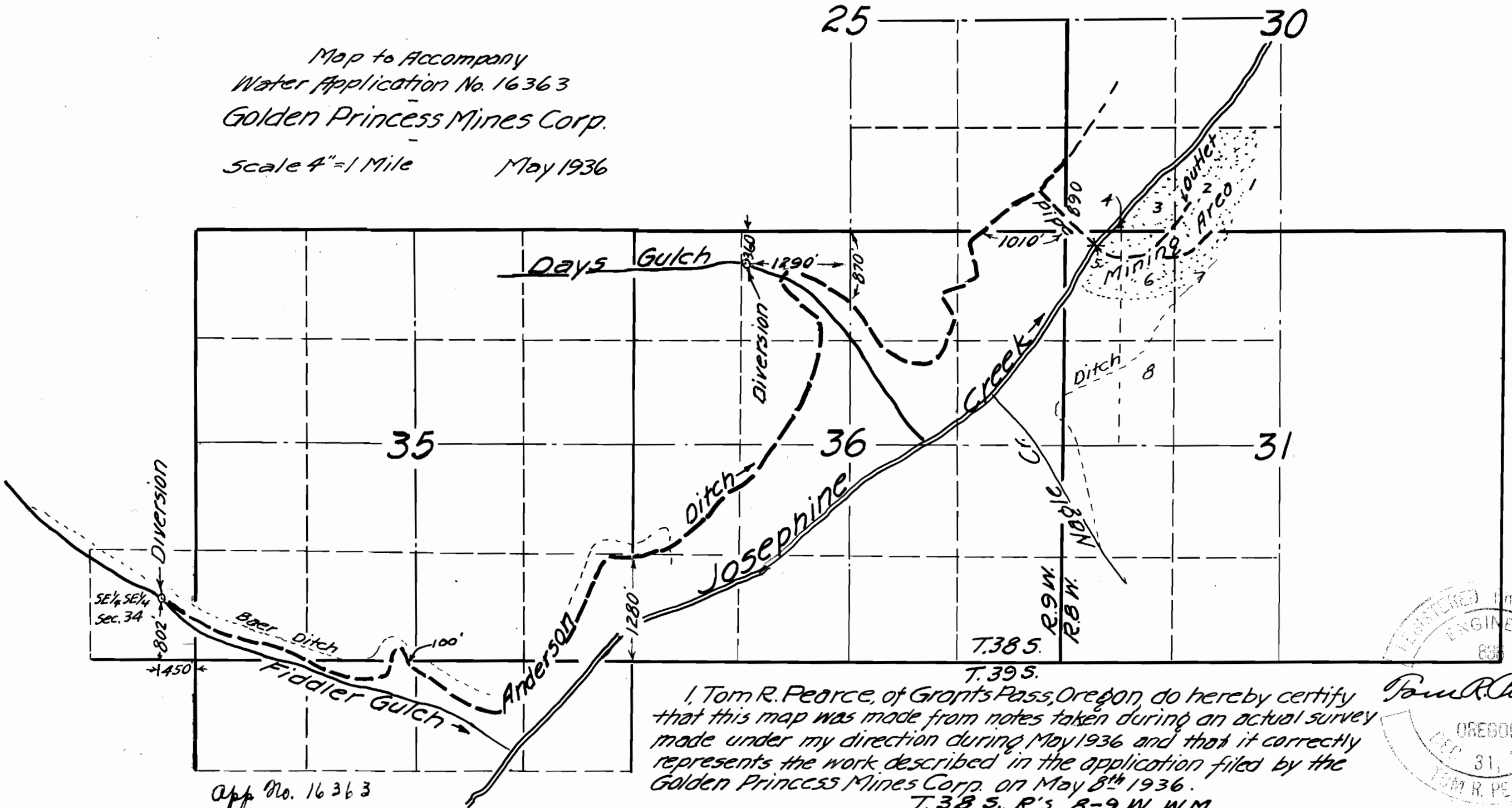


Map to Accompany  
 Water Application No. 16363  
 Golden Princess Mines Corp.  
 Scale 4"=1 Mile May 1936



I, Tom R. Pearce, of Grants Pass, Oregon, do hereby certify that this map was made from notes taken during an actual survey made under my direction during May 1936 and that it correctly represents the work described in the application filed by the Golden Princess Mines Corp. on May 8<sup>th</sup> 1936.

T. 38 S., R's 8-9 W., W.M.



Tom R. Pearce

app. No. 16363  
 Per. No. 12152

16363