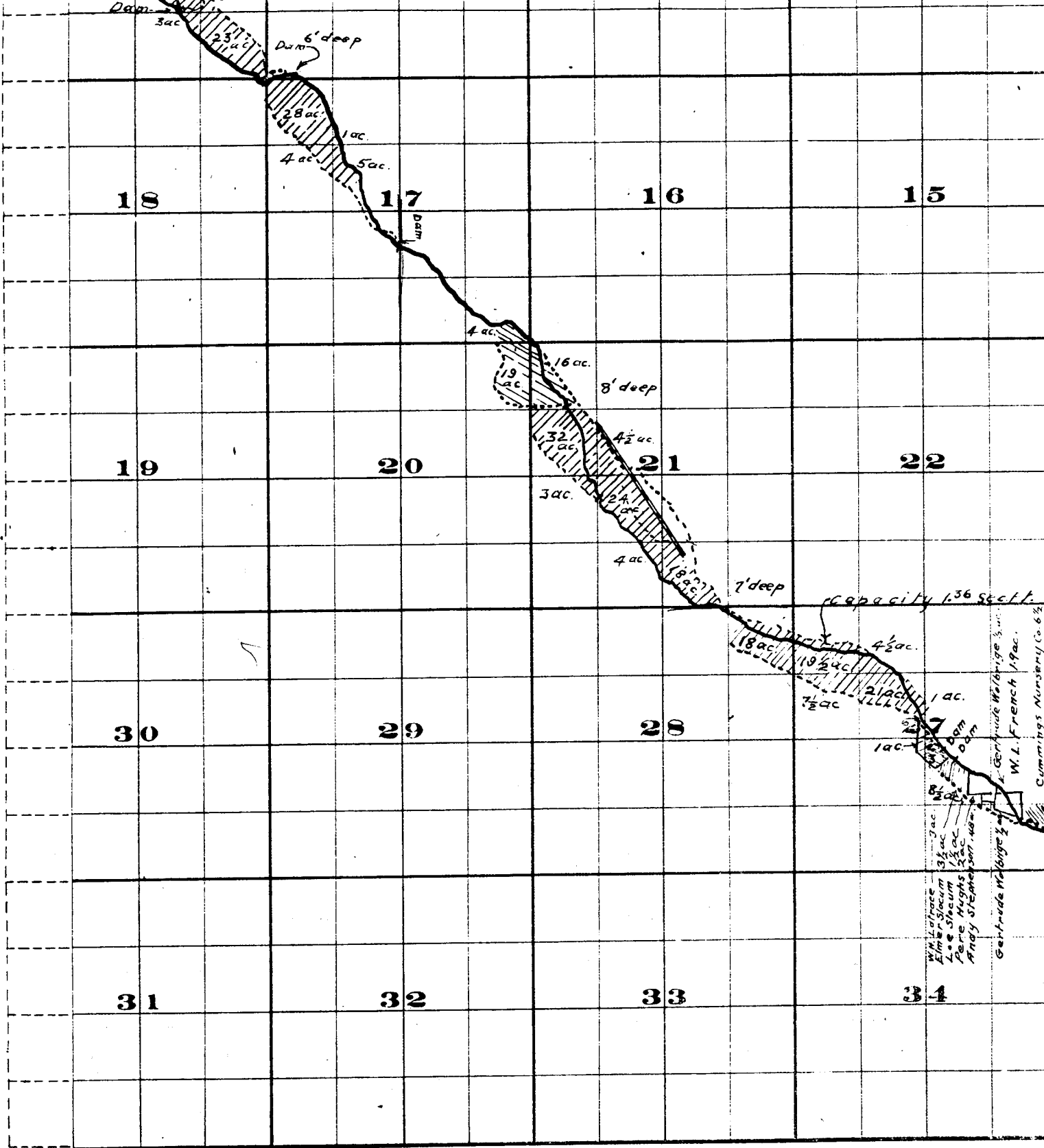


FROM OFFICE OF THE STATE ENGINEER

Willow Creek Adjudication



Part 3 S. 26
2 S. 26



THE S & B BRISTOL CO., PRINTERS & BOUNDERS, CHRYSTAL WY.

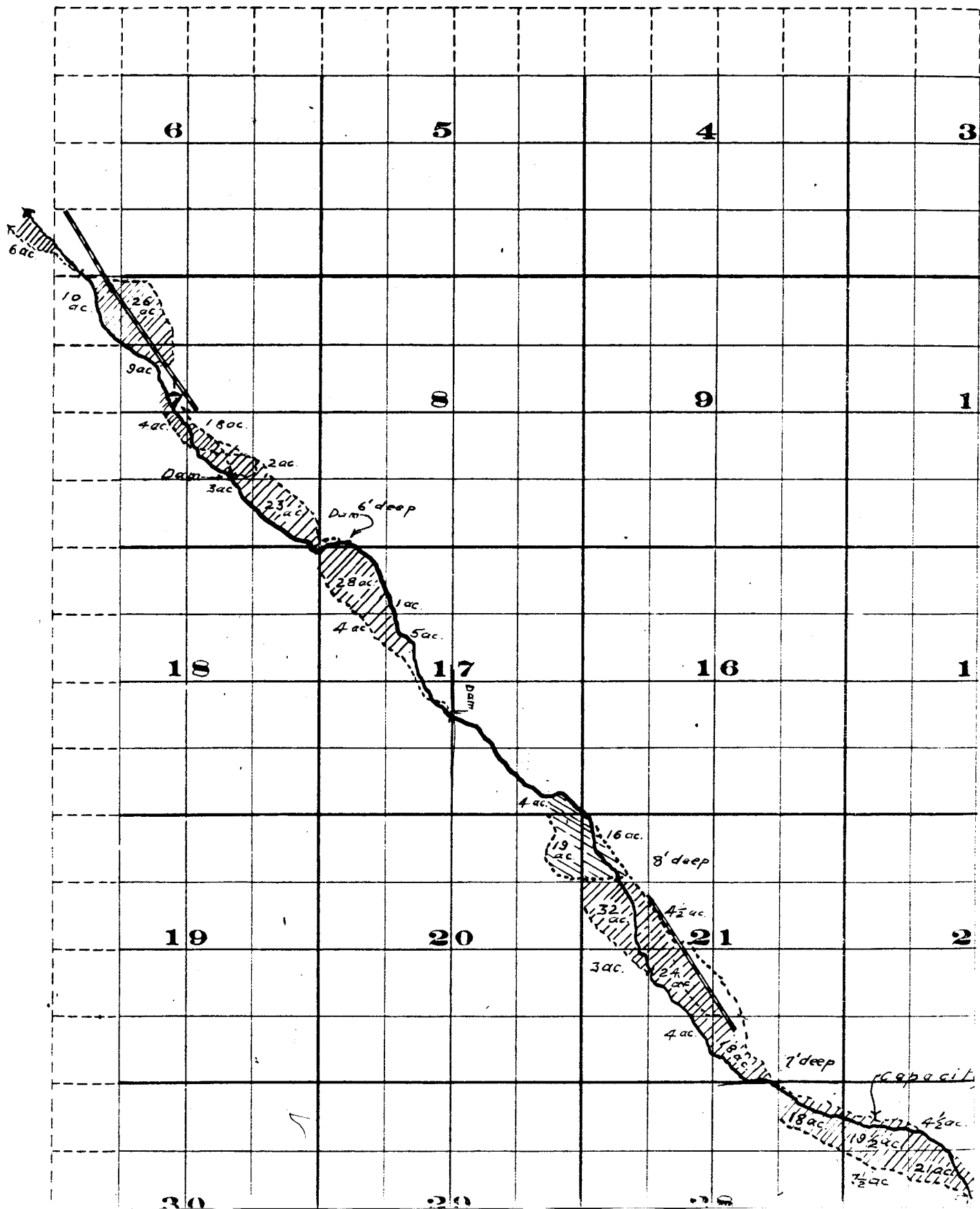
Surveyed by R.D. Cooper July 1909

John H. Lewis - State Engineer.

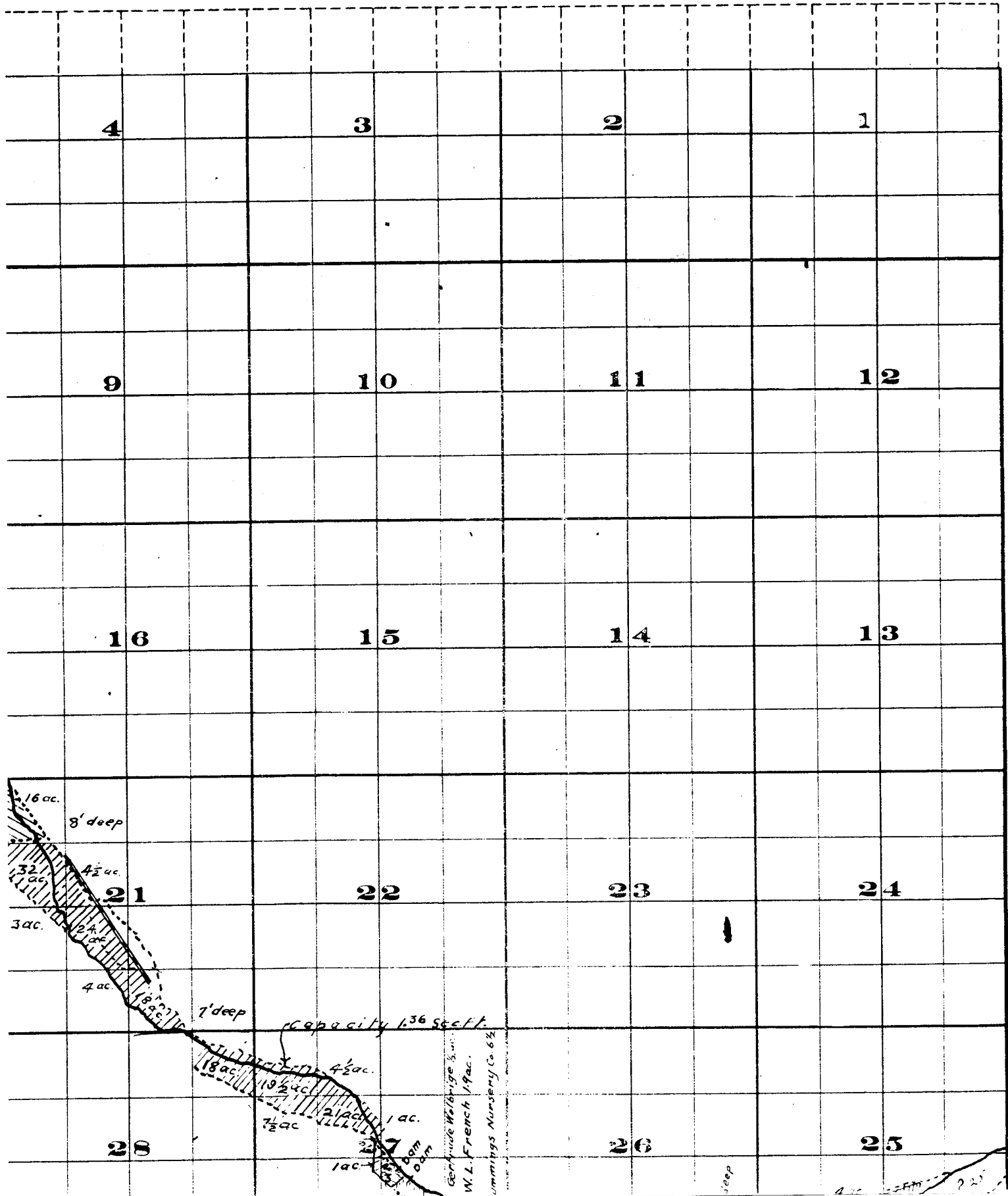
Examined July 14, 1909.



Township 2 S.



Range 26 E.W.M.

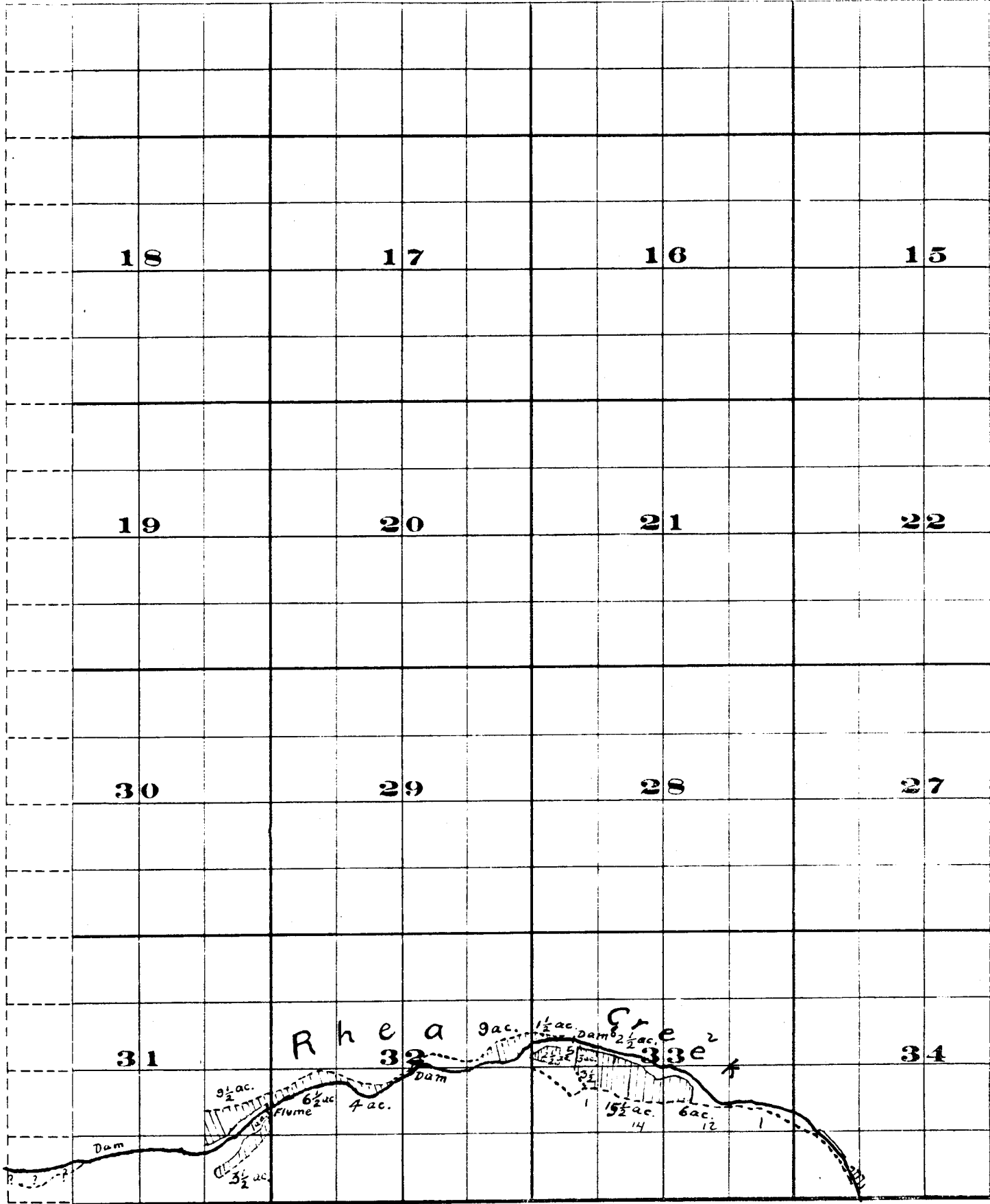


| | | | | | | | | | |
|--|-----------|--|--|-----------|--|--|--|-----------|--|
| | | | | | | | | | |
| | | | | | | | | | |
| | 15 | | | 14 | | | | 13 | |
| | | | | | | | | | |
| | | | | | | | | | |
| | | | | | | | | | |
| | 22 | | | 23 | | | | 24 | |
| | | | | | | | | | |
| | | | | | | | | | |
| | | | | | | | | | |
| | 27 | | | 26 | | | | 25 | |
| | | | | | | | | | |
| | | | | | | | | | |
| | | | | | | | | | |
| | 34 | | | 35 | | | | 36 | |
| | | | | | | | | | |
| | | | | | | | | | |

FROM OFFICE OF THE STATE ENGINEER, SALEM, OREGON

Willow Creek Adjudication

3 S. 26 E.



THE S.A. BRISTOL CO. PRINTERS & BOOKBINDERS CHICAGO, ILL.

Surveyed by H.K. Donnelly July 1909

John H. Lewis - State Engineer

Examined - July 14, 1909.

Range 26 E.W.M.

