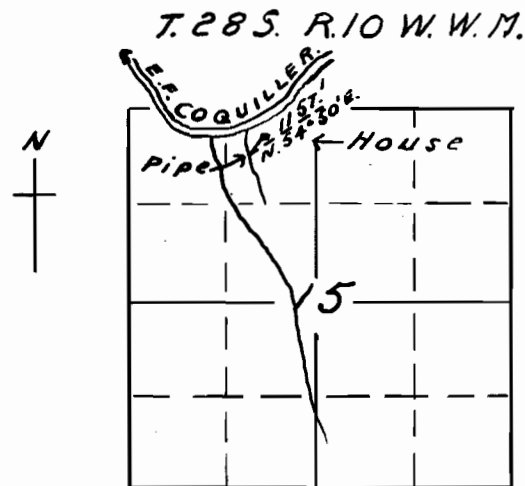


Map
accompanying application of
MARY A. HARVEY
to appropriate water.

App. No. 15548
Per. No. 11459



I, J. N. Gearhart, of Myrtle Point, Oregon, do hereby certify, that this map was made from notes taken during an actual survey made by me on Aug. 23, 1934, and that it correctly represents the works described in the accompanying application, together with the location of streams in the immediate vicinity.

J. N. Gearhart