

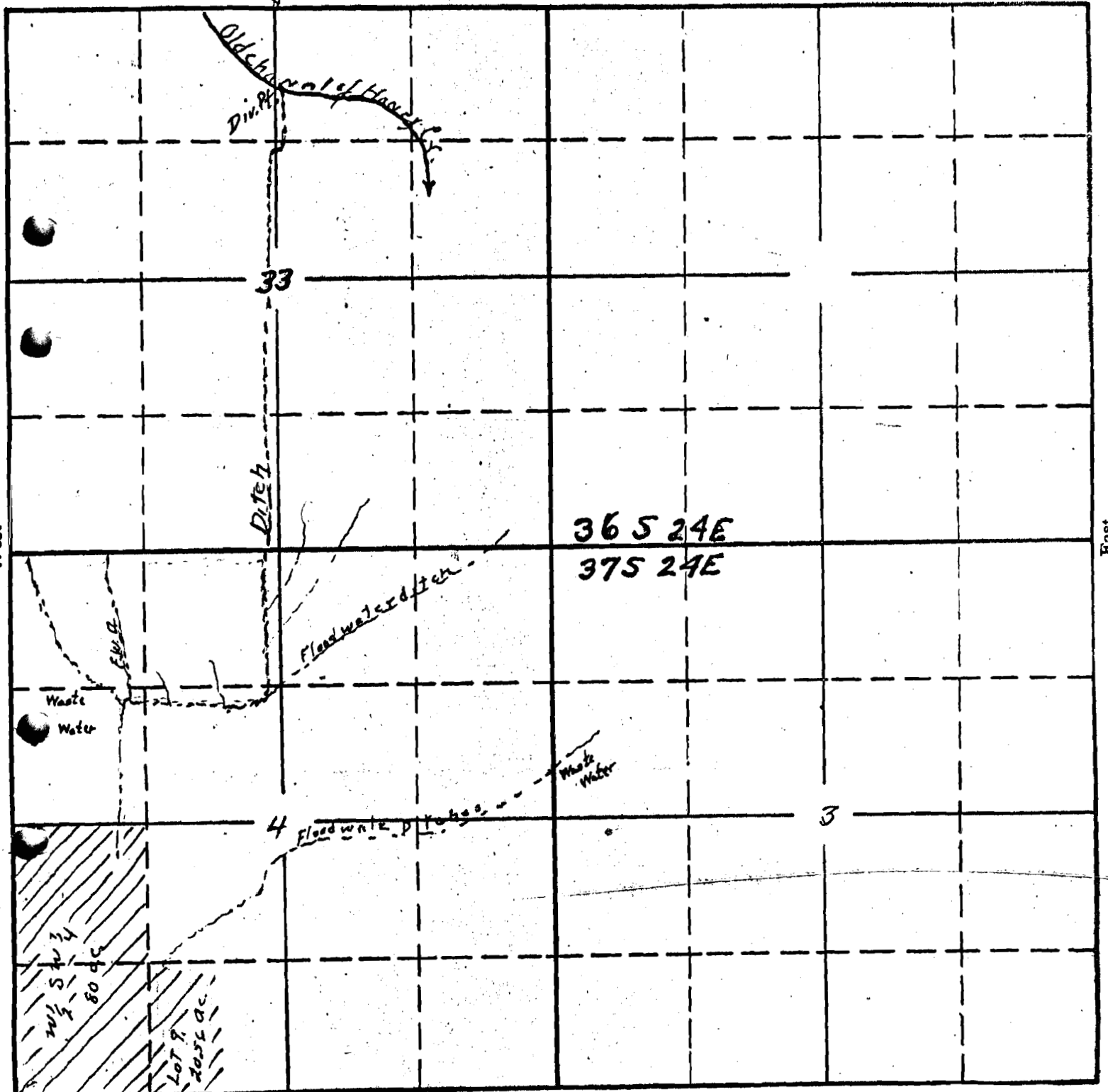
SECTION

4

12158  
#12138

TOWNSHIP 37S, RANGE 24E, W. M.

North



South

RECEIVED  
APR 21 1936

RECEIVED  
MAY 13 1936

APPLICATION No. 16328  
PERMIT No. 12158

STATE ENGINEER  
SALEM, OREGON

STATE ENGINEER  
SALEM, OREGON

37-24 ✓