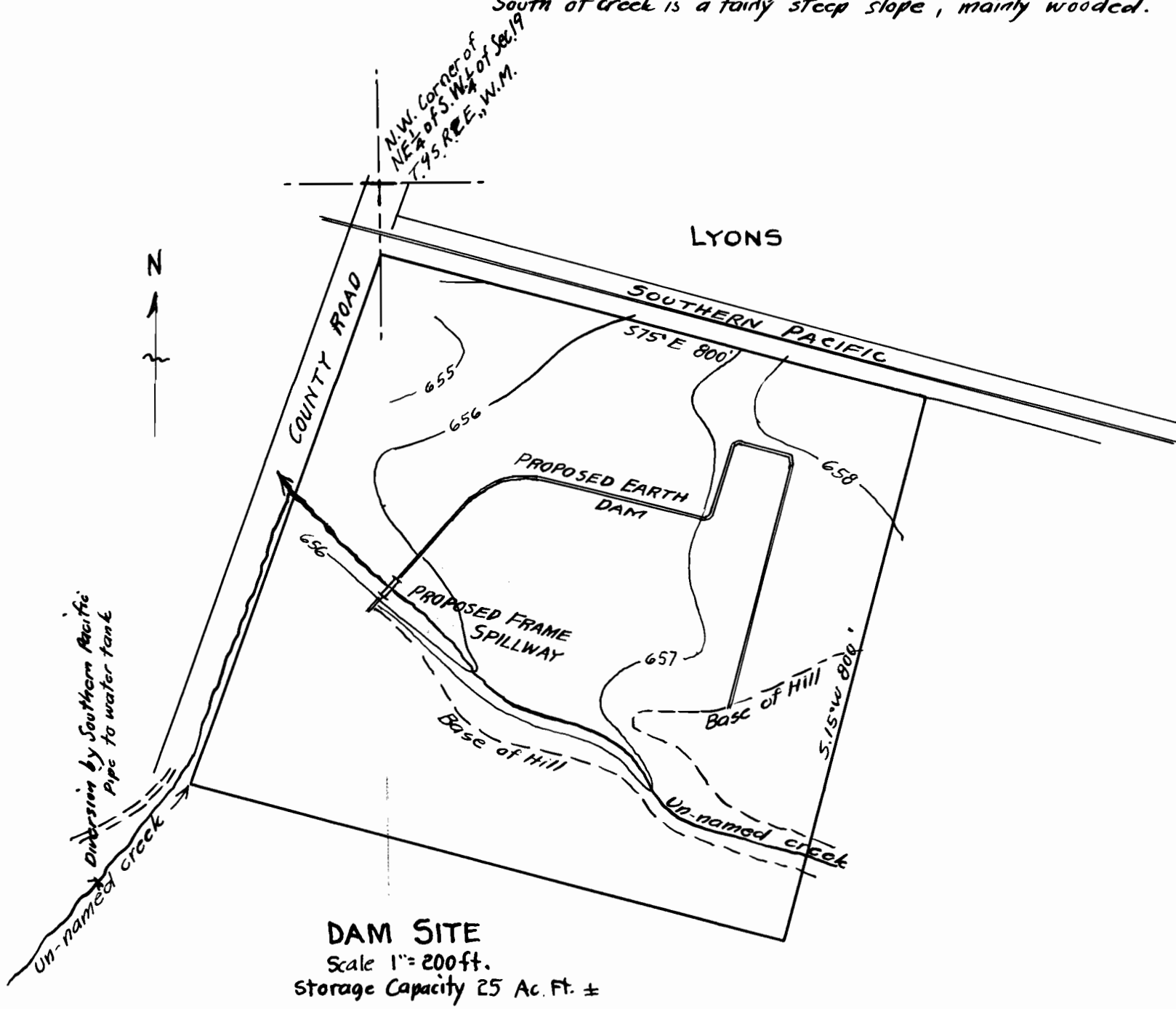
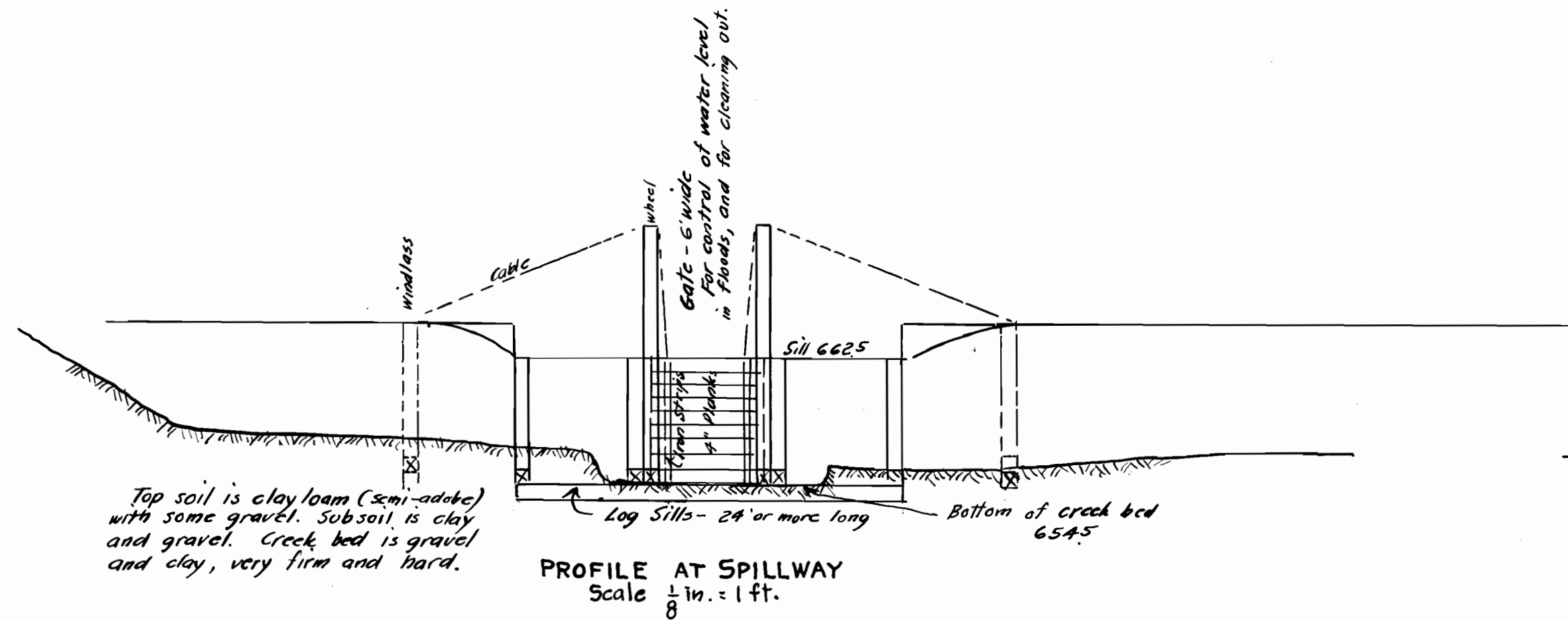


DRAINAGE AREA - IN T.9S.R.2E., W.M.
Scale 4" = 1 mile

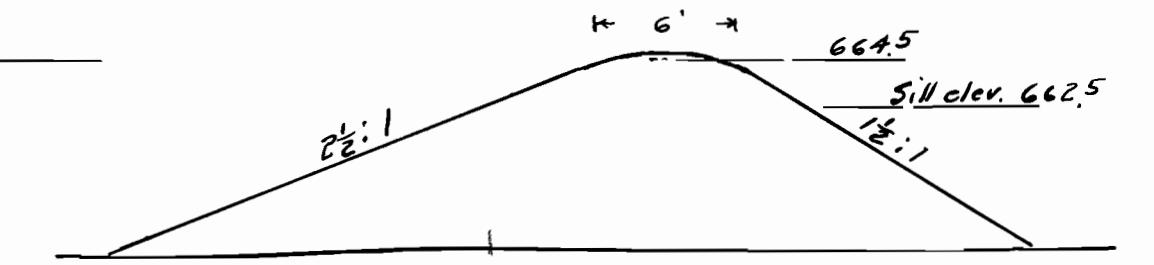
Total drainage area appears to be about 1000 Acres.
North of creek is mainly farm land - clay loam over gravel.
South of creek is a fairly steep slope, mainly wooded.



DAM SITE
Scale 1" = 200 ft.
Storage Capacity 25 Ac. Ft. ±

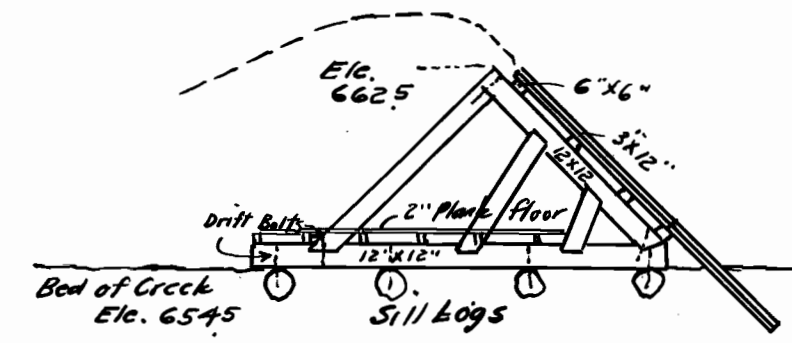


PROFILE AT SPILLWAY
Scale 1/8" = 1 ft.

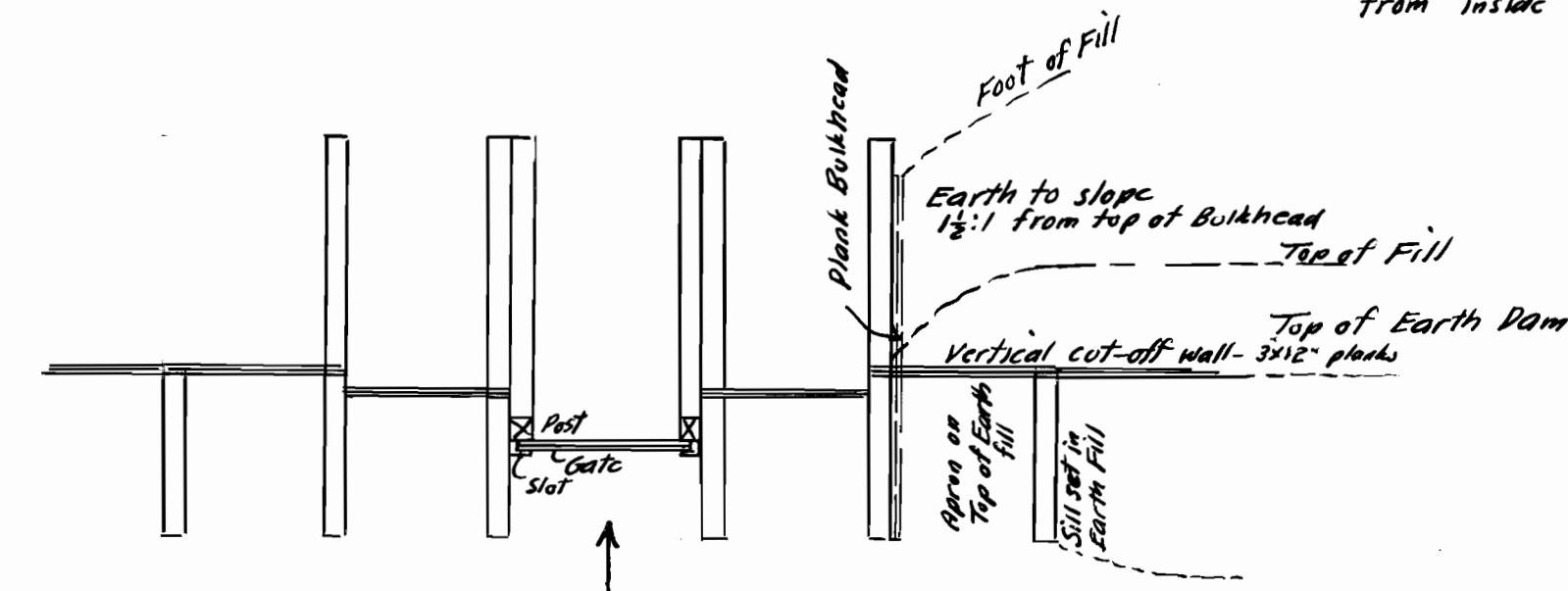


SECTION OF EARTH DAM
Scale 1/8" = 1 ft.

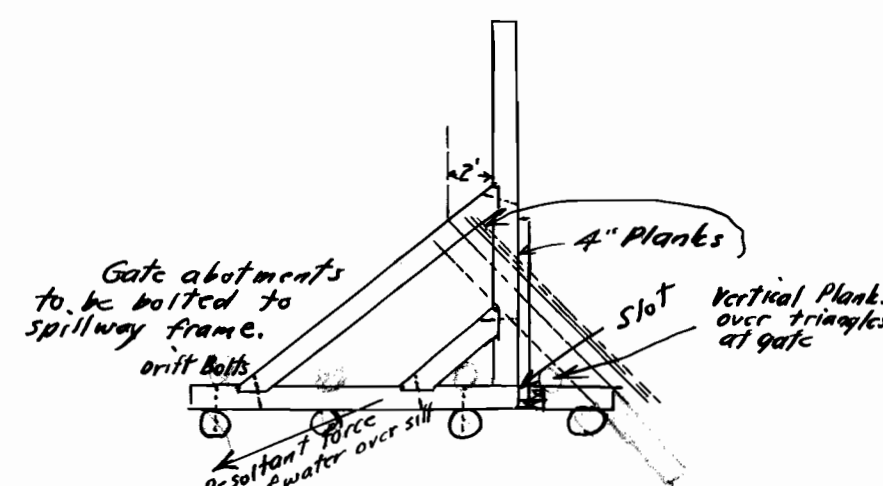
Note: Earth fill to be made with Bulldozer.
Side slopes to be reversed where material is taken from inside of dam.



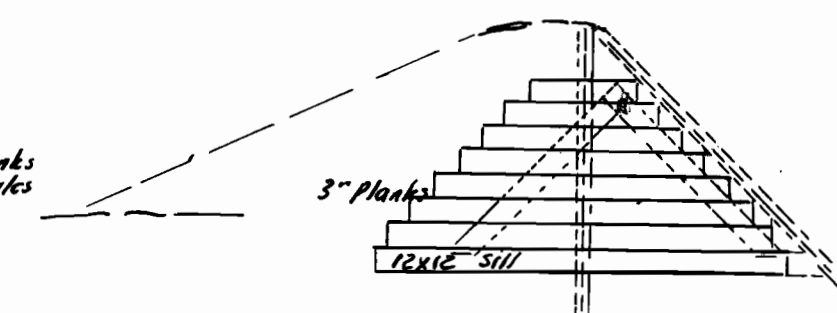
SECTION OF SPILLWAY
Scale 1/8" = 1'



PLAN OF SPILLWAY
Scale 1/8" = 1'

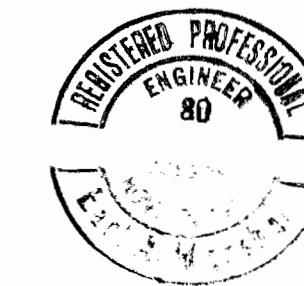


SECTION OF GATE
Scale 1/8" = 1'



PLANK BULKHEAD
Scale 1/8" = 1'

PROPOSED MILL DAM AT LYONS
IN SECTION 19 T.9S.R.2E. W.M. — LINN COUNTY, OREGON.



I, Earl A. Marshall, of Portland, Oregon, do hereby certify that this map and plans were made from notes taken during an actual survey made by me on July 17, 1937; and that it correctly represents the works described in the accompanying application, together with the location of streams in the immediate vicinity.

Earl A. Marshall
Registered Professional Engineer

Oregon No. 30
Nov. 8, 1917.

Application No. R-16997 + 16973
Permit No. R-707 + 12704

RECEIVED
AUG 5 1937
STATE ENGINEER
SALEM, OREGON