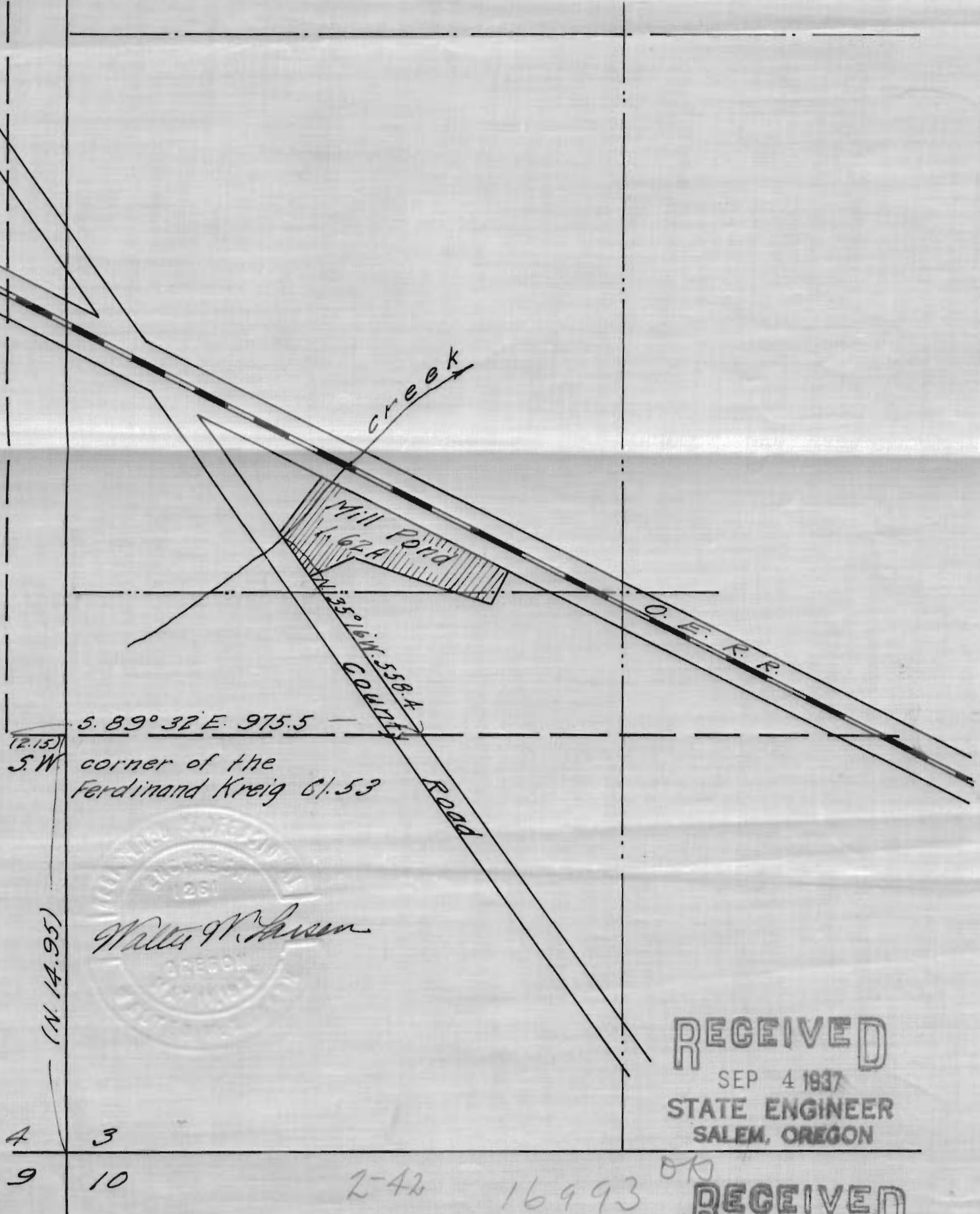


MILL POND FOR THE GROVE LUMBER CO.  
SEC. 3, T. 13S, R. 1W. W.M.

Scale:- 1 inch = 300 feet.

Platted from field notes  
Aug 16, 1937 by Walter W. Larsen  
County Engineer



RECEIVED  
SEP 4 1937  
STATE ENGINEER  
SALEM, OREGON

2-42 16993 OK

Application No 16993  
Permit No. 12,739

RECEIVED  
AUG 19 1937  
STATE ENGINEER  
SALEM, OREGON