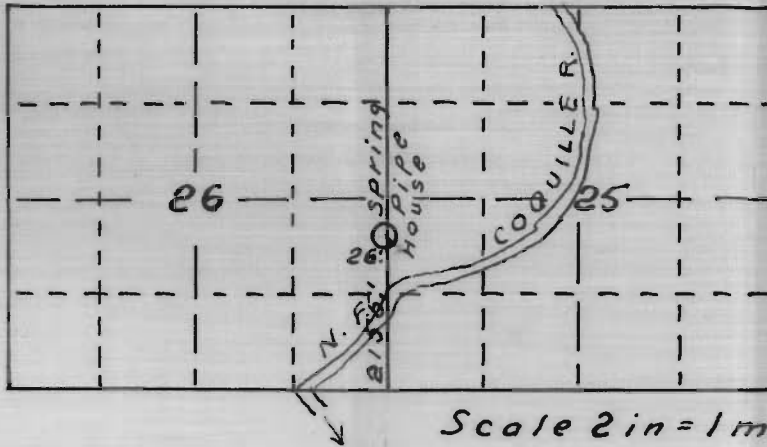




T. 28 S. R. 12 W. W. M.



Scale 2 in = 1 mi.

Map accompanying
application of
HARVEY A. SMITH
to appropriate water.

I, J. N. Gearhart, of Myrtle Point, Oregon, do hereby certify that this map was made from notes taken during an actual survey made by me on Nov. 11, 1936, and that it correctly represents the works described in the accompanying application, together with the location of streams and other ditches in the immediate vicinity.

J. N. Gearhart
Registered Professional Engineer



RECEIVED
JUL 19 1937
STATE ENGINEER
SALEM, OREGON

Application No. 16991
Permit No. 12745

18-P19

16991 OR