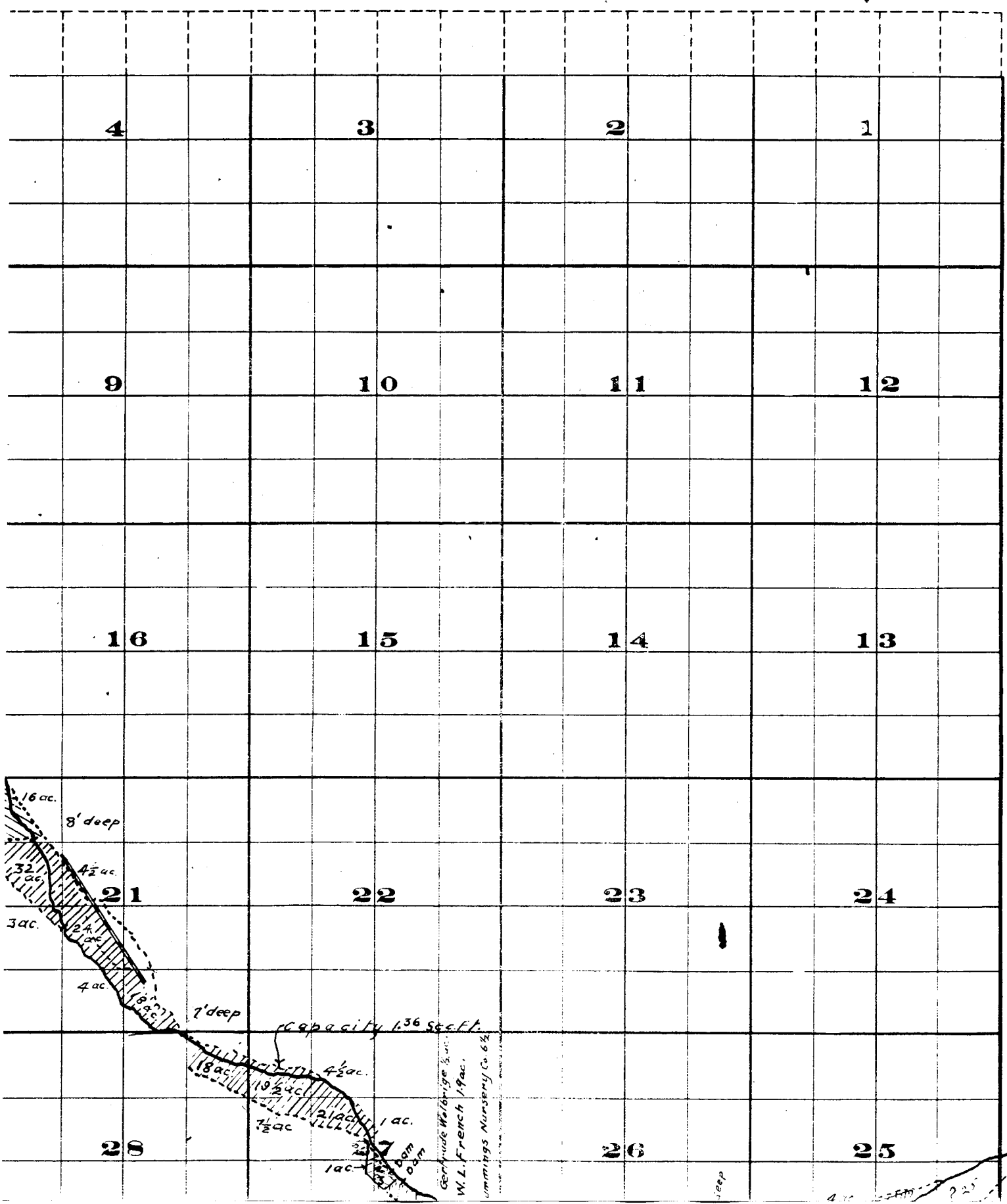
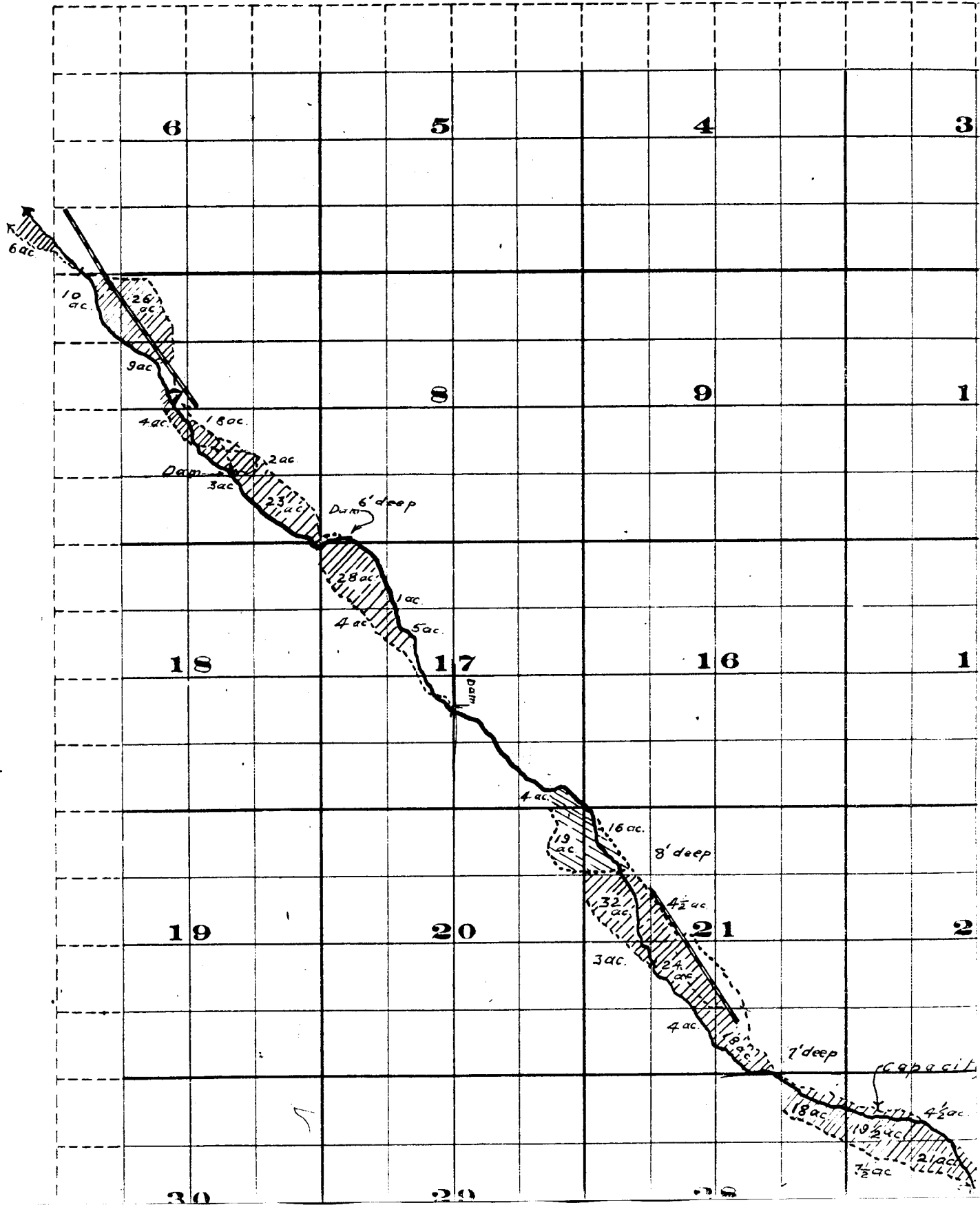
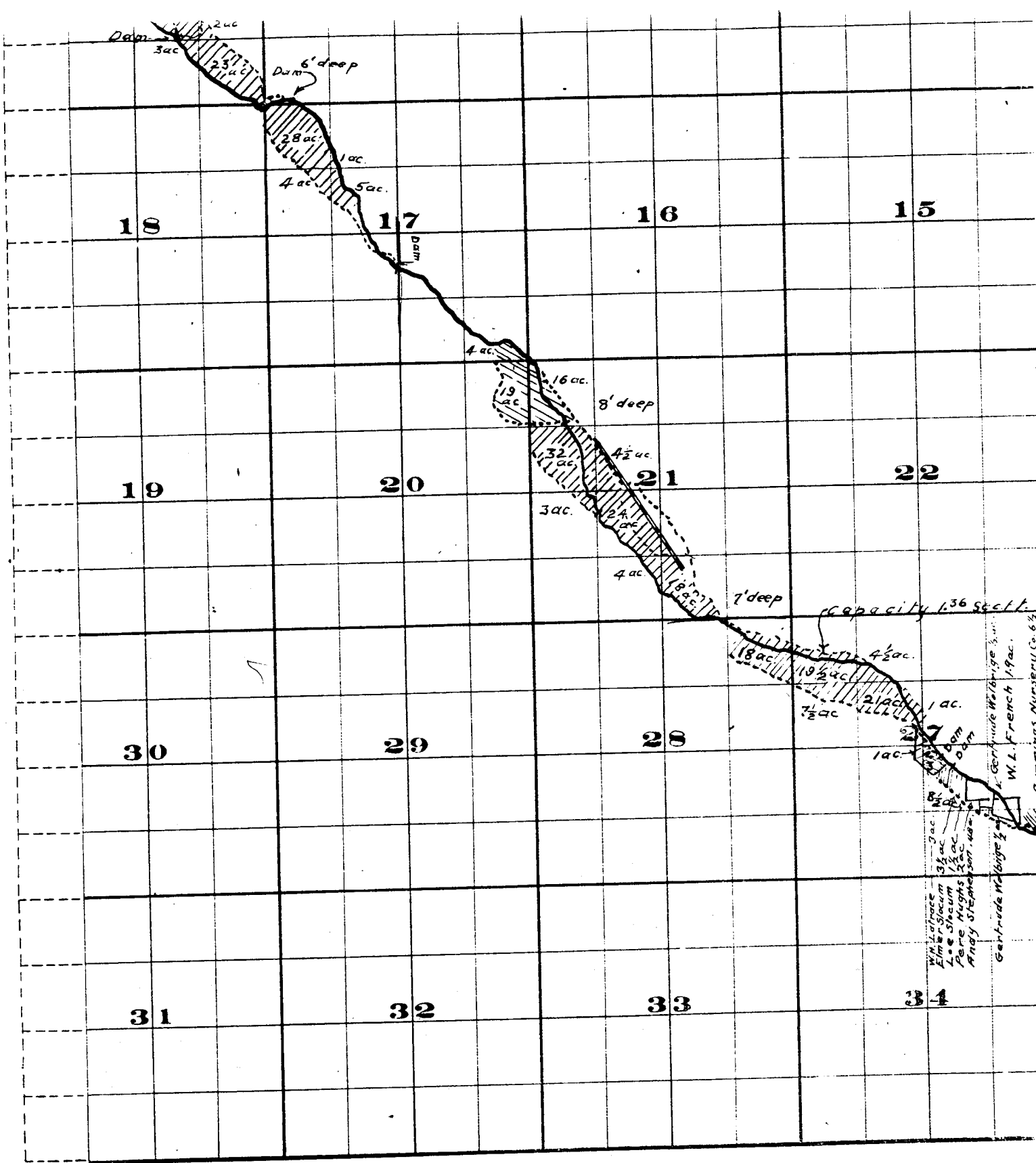


S. , Range 26 E. W. M.



Township 2 S. ,





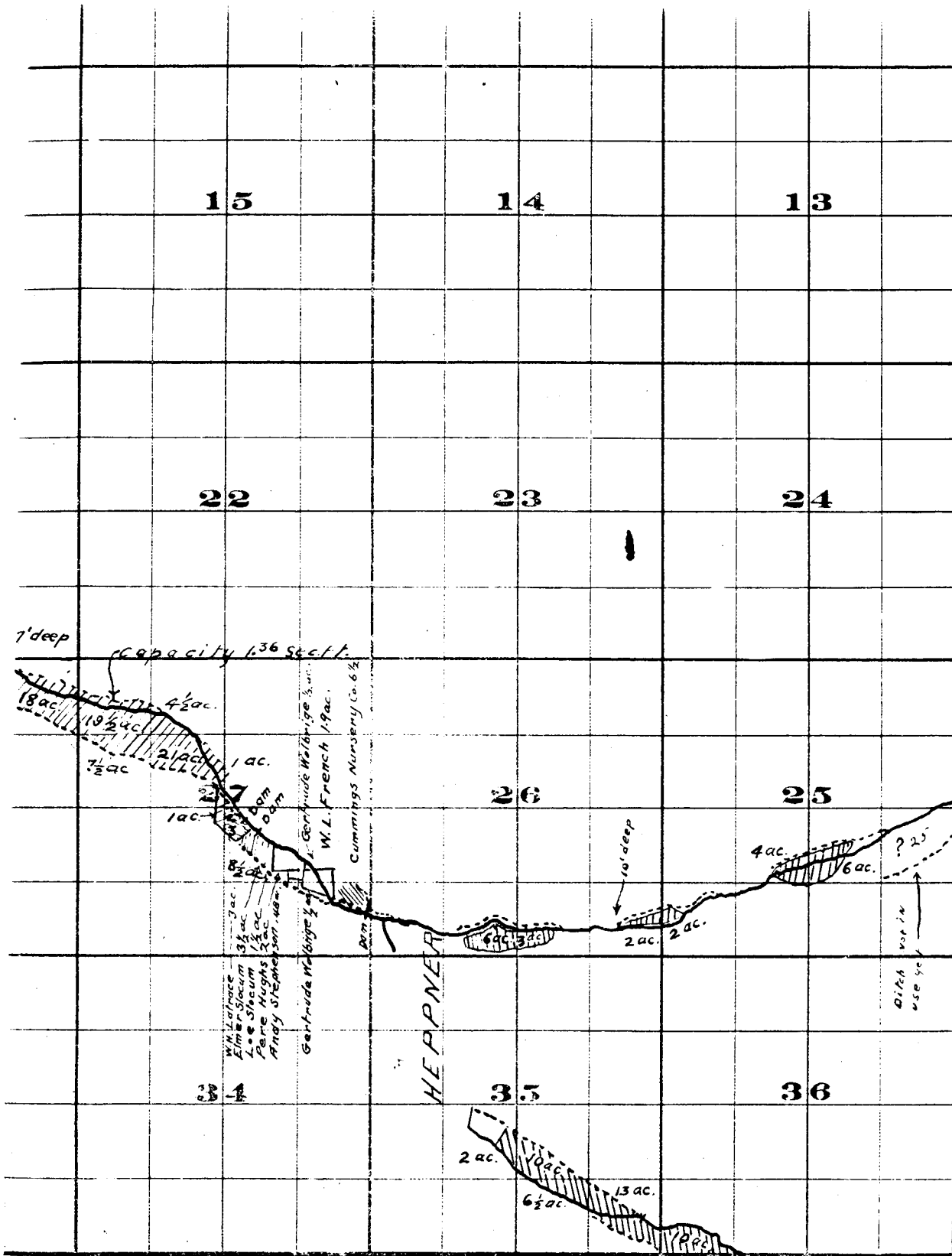
THE B. & BRISTOL CO., PRINTERS & BOOK-BINDERS, CHESTER, N.Y.

Surveyed by R.D. Cooper July 1909

John H. Lewis - State Engineer.

Examined July 14, 1909.





FROM OFFICE OF THE STATE ENGINEER

Willow Creek Adjudication

Part 35.26
25.26