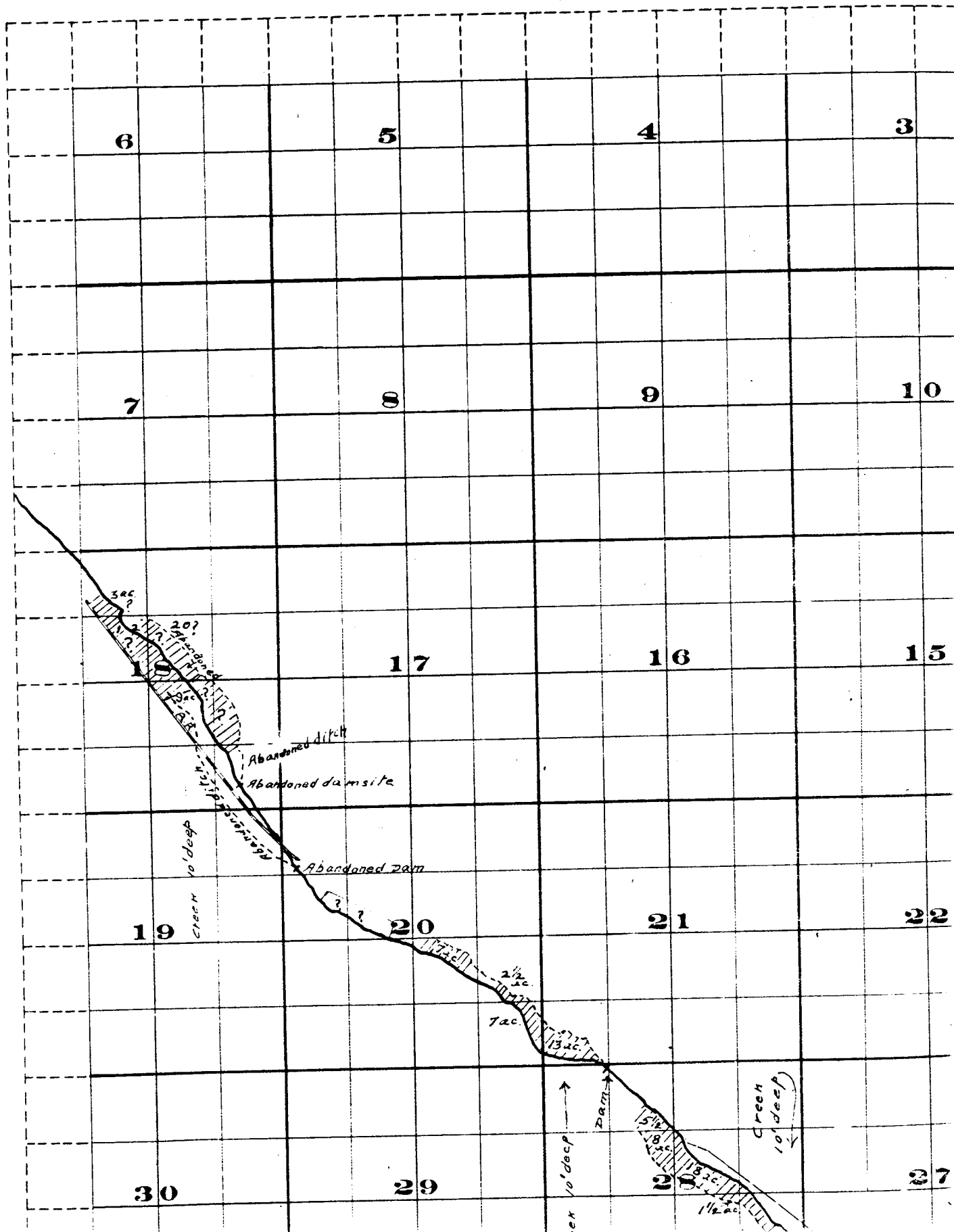
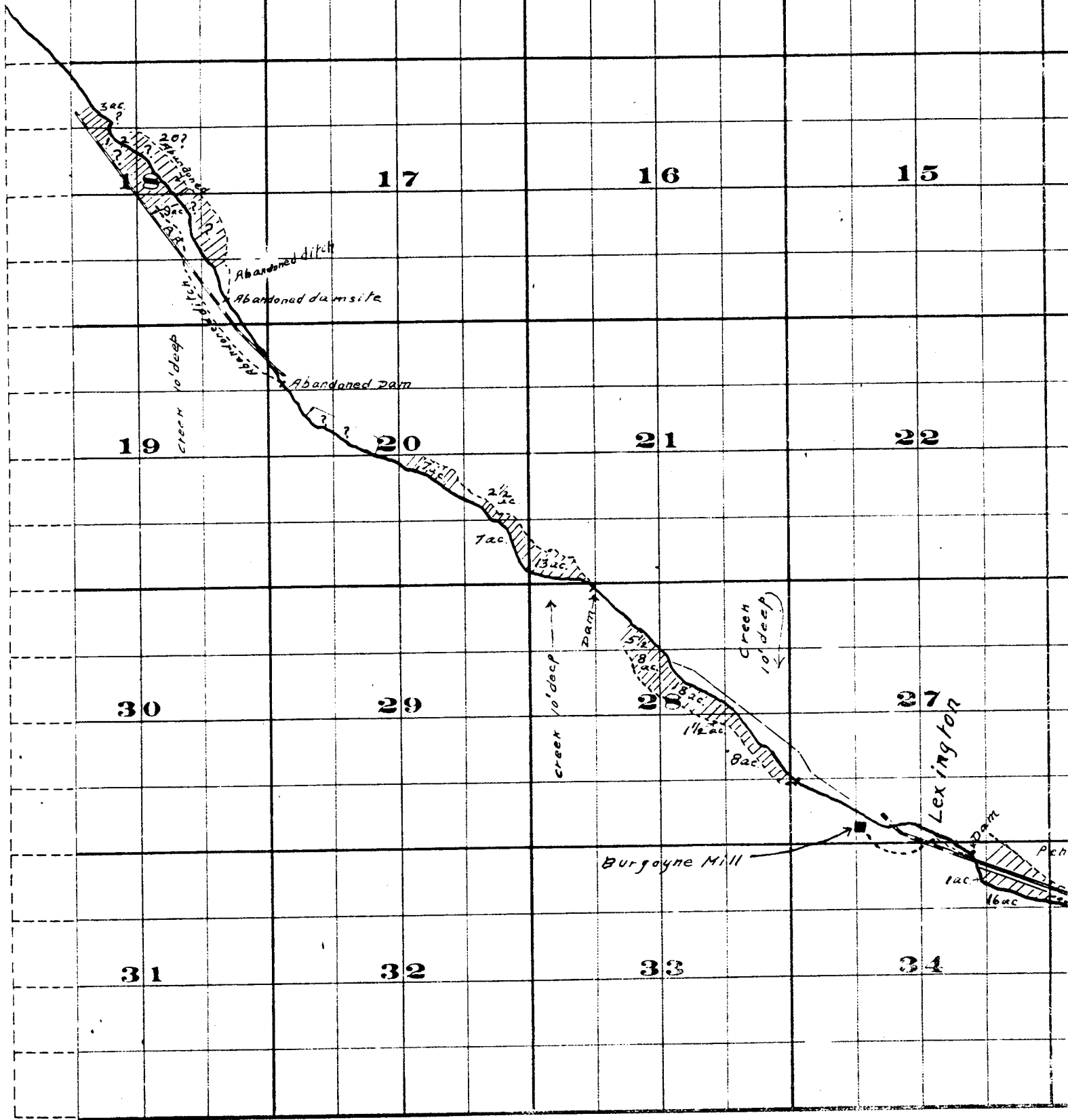




Township 1 S. , R:



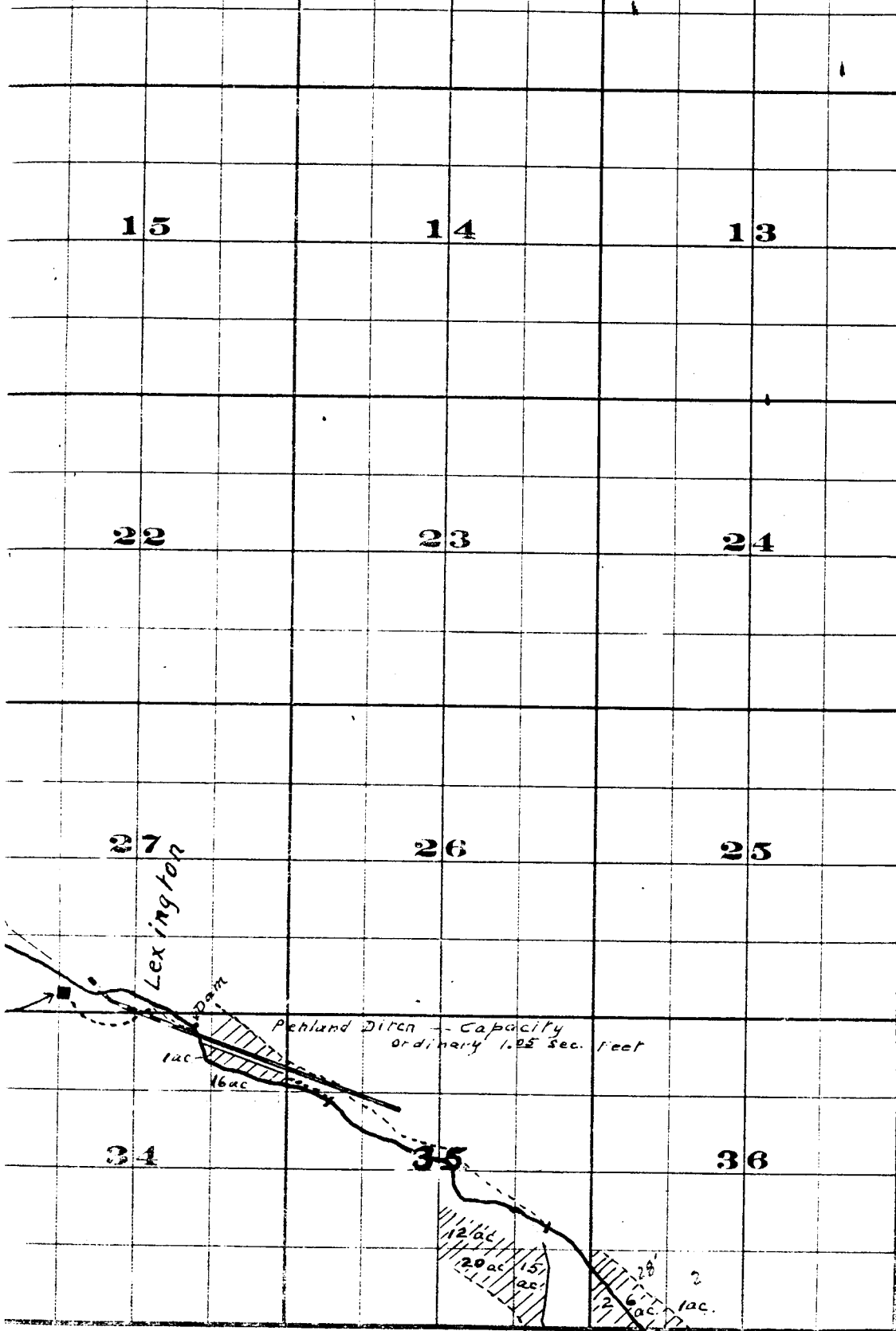


THE S. PRISTOL CO. PRINTERS & BOOKBINDERS, 111 N. 1ST ST. WY.

Surveyed by R.D. Gooper - July 1909

John H. Lewis - State Engineer

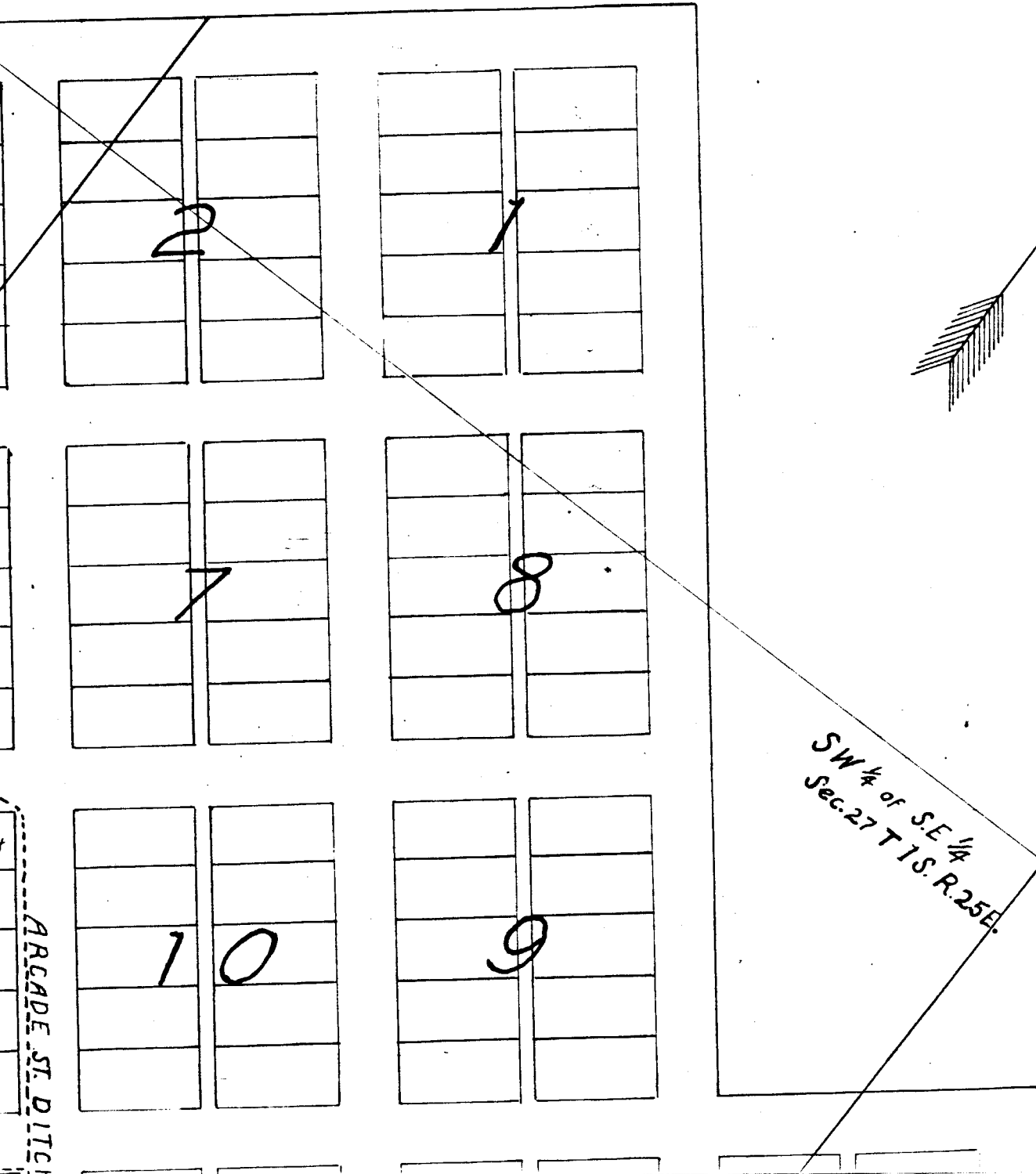
Examined July 14, 1909.



FROM OFFICE OF THE STATE ENGINEER, SALEM, OREGON

*Willow Creek Adjudication.*

TION



# LEXINGTON

2	1

2	2

4	

3	

Sarah Booher
Sarah Booher
Sarah Booher
Sarah Booher
Sarah Booher
Sarah Booher

Sarah Booher
Sarah Booher
Sarah Booher
Sarah Booher
Sarah Booher
Sarah Booher

Ruth Barnett
Ruth Barnett

WE Pointer

JM White
JM White


2

Mrs Boothby
Mrs Boothby

Joe Eskelson
Joe Eskelson
Joe Eskelson
Joe Eskelson
Joe Eskelson

Mrs. C.A. Bengt
W.R. Monkers
W.R. Monkers
W.R. Monkers
W.R. Monkers

WE Leach
Breeding
E.A. Bolch Trustee for Congregational Church

WG Scott
WG Scott
WG Scott
Mrs. Beymer
Mrs. Beymer

John

John

Ellis

John

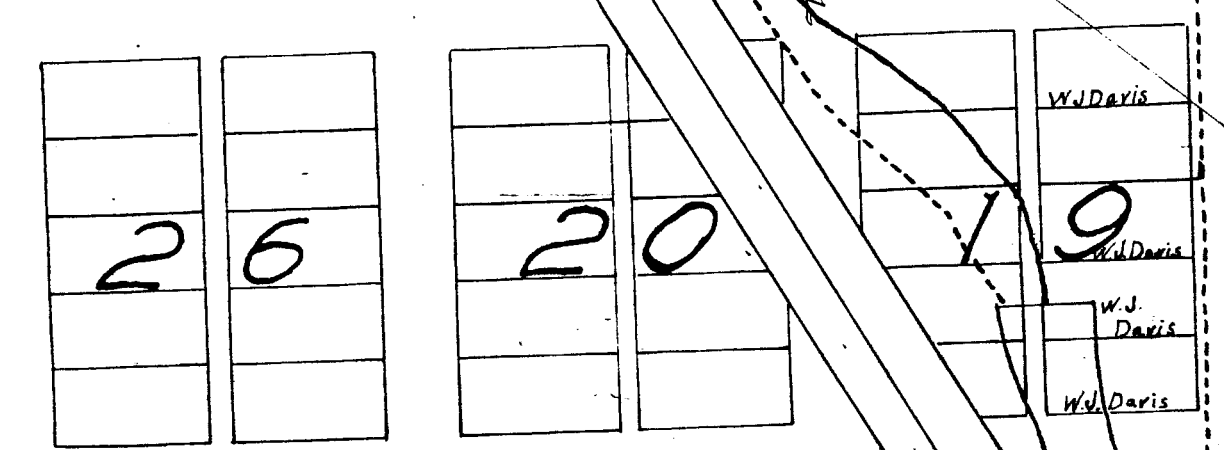
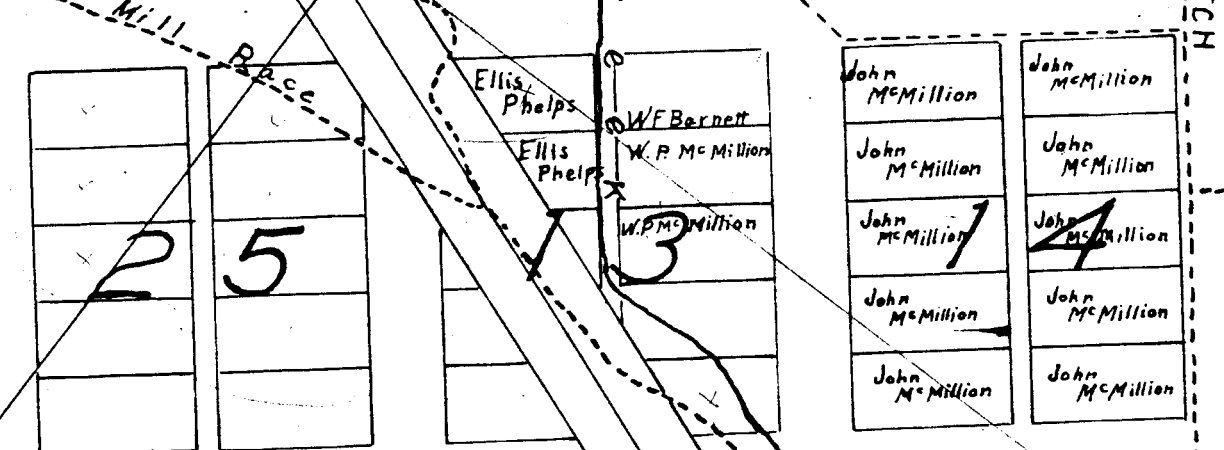
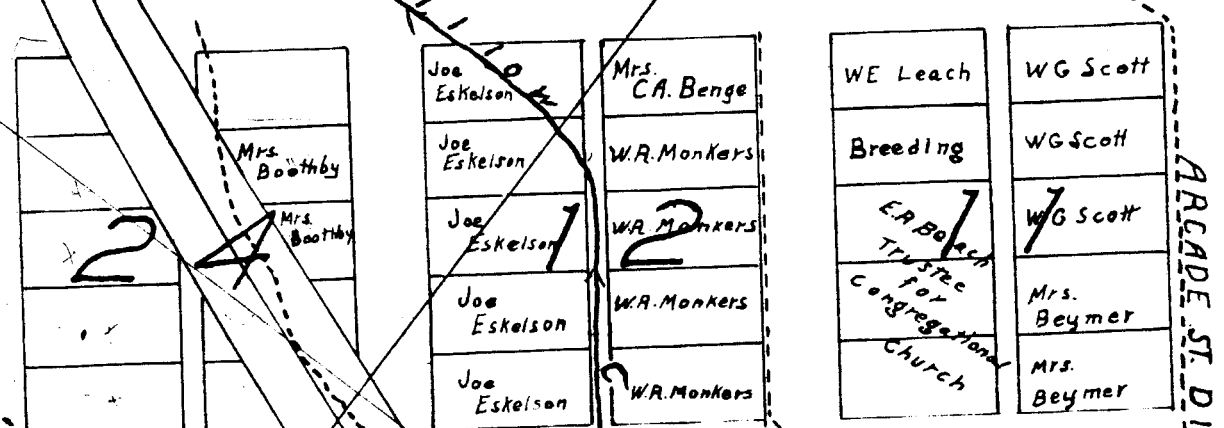
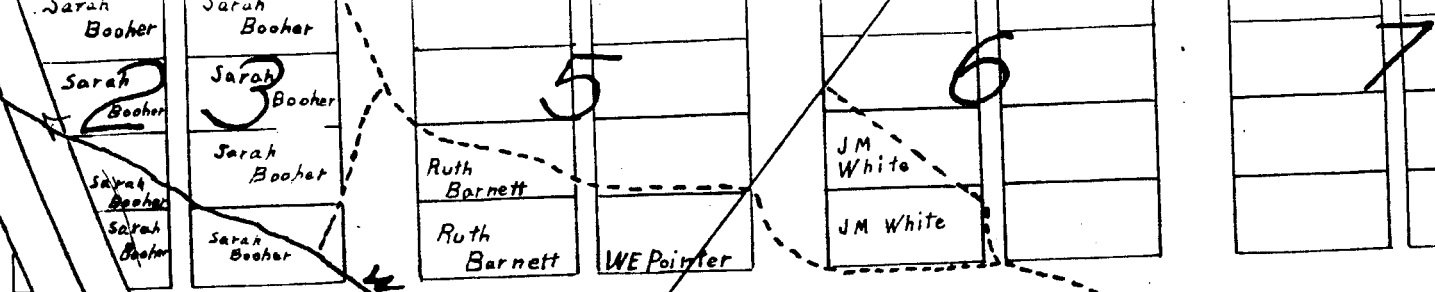
John

John

John

ARCADE ST. DITCH

MILL Race



ARCADE ST. DITCH

1 Lot = 1/6 Acre

Note - Lots in Which Names Are Shown Are Irrigated

John H. Lewis - State Engineer Examined J.

7	

8	

10	

9	

SW 1/4 of S.E. 1/4  
Sec. 27 T 15. R. 25 E.

ARCADE ST. DITCH

John McMillion	
John McMillion	
John McMillion	5
John McMillion	
John McMillion	

J.E. Gentry	A.M. Zink
J.E. Gentry	A.M. Zink
1	6
	F. Beymer
	W.F. Barnett
	W.F. Barnett

Peter McCabe	E.S. Duran
Peter McCabe	E.S. Duran
Peter McCabe	E.S. Duran
W.F. Barnett	E.S. Duran

1	8
Mrs. Beymer	
Mrs. Beymer	

	Frank Parker
W.B. McAllister	Roy McAllister
W.B. McAllister	7
Mrs. S.J. Boothby	E.W. Moyers
Mrs. S.J. Boothby	E.W. Moyers

10	1
9	2
8	3
7	4
6	5

PENLAND DITCH

All lots numbered the same

Scale 150 Ft. = 1 in

mined July 14, 1909.

Lexington.

15. 25 E.