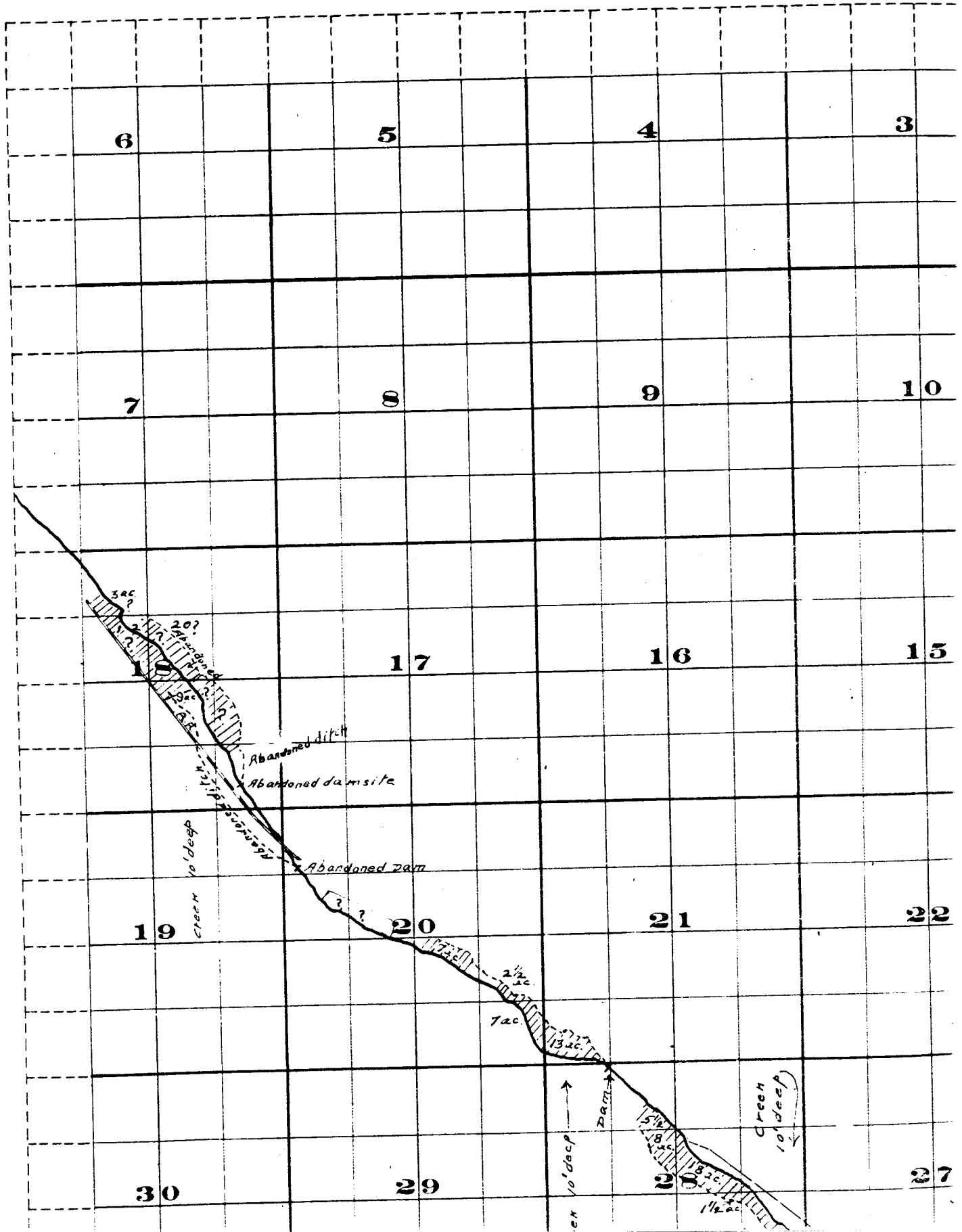
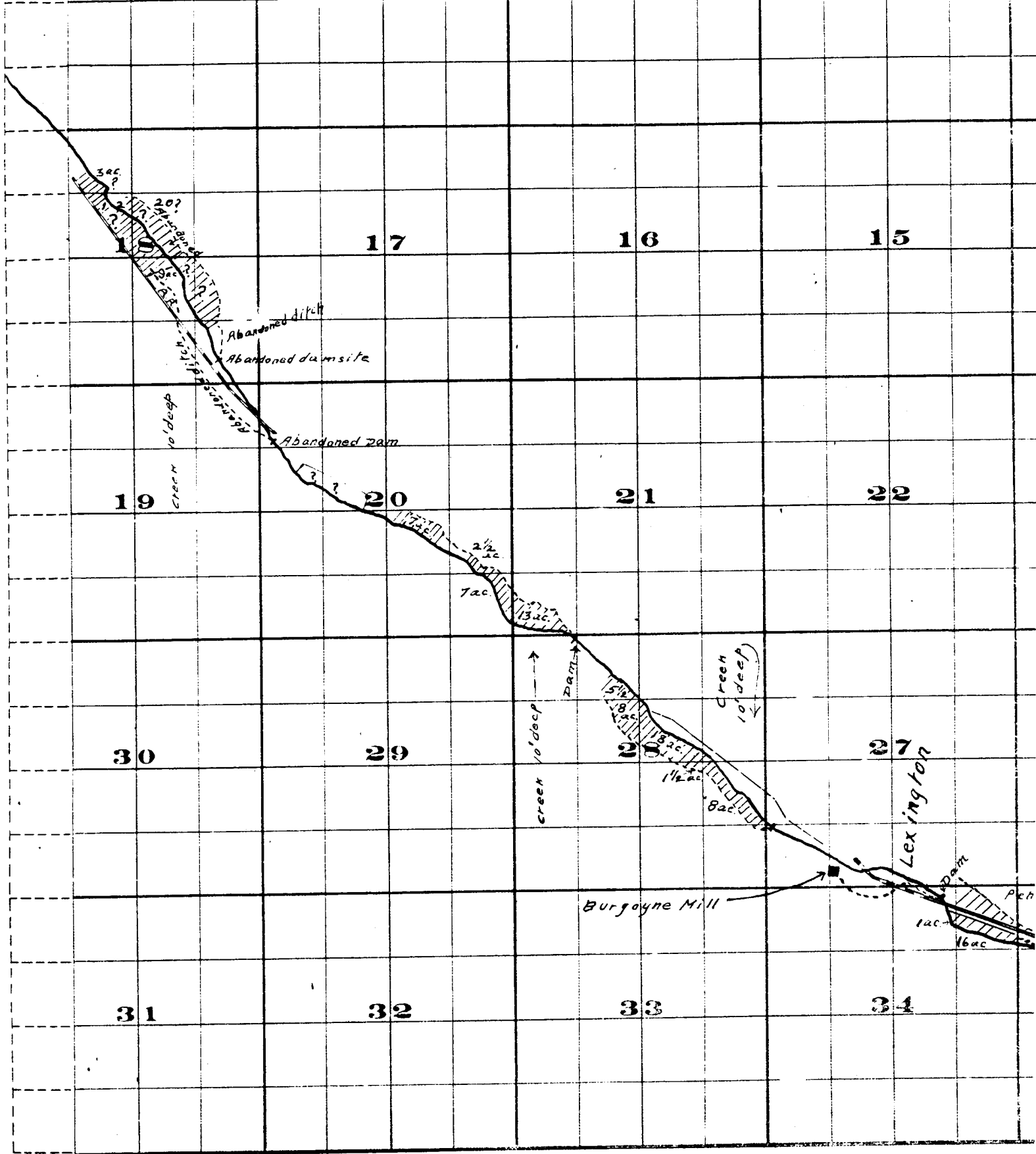




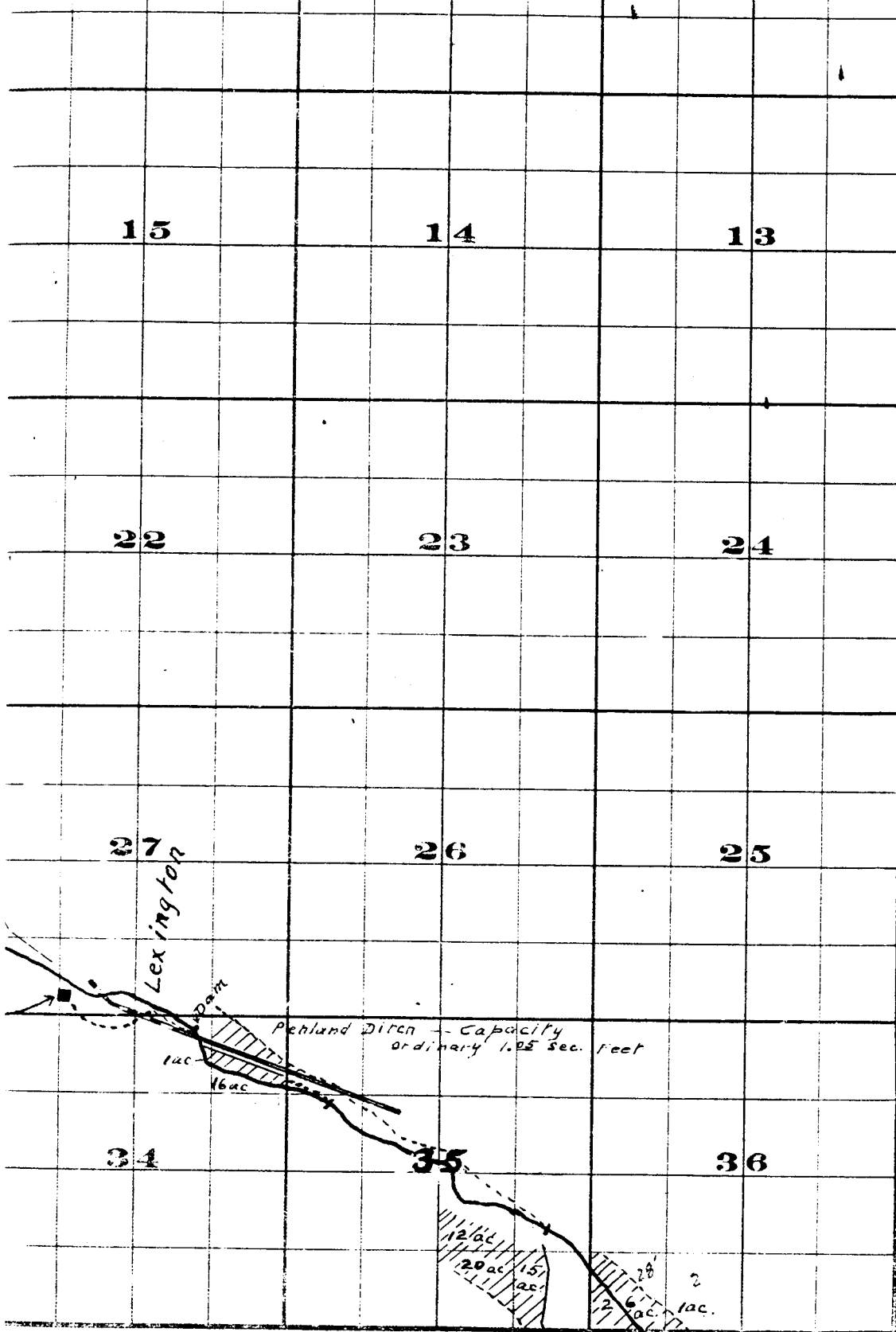
Township 1 S. , R:





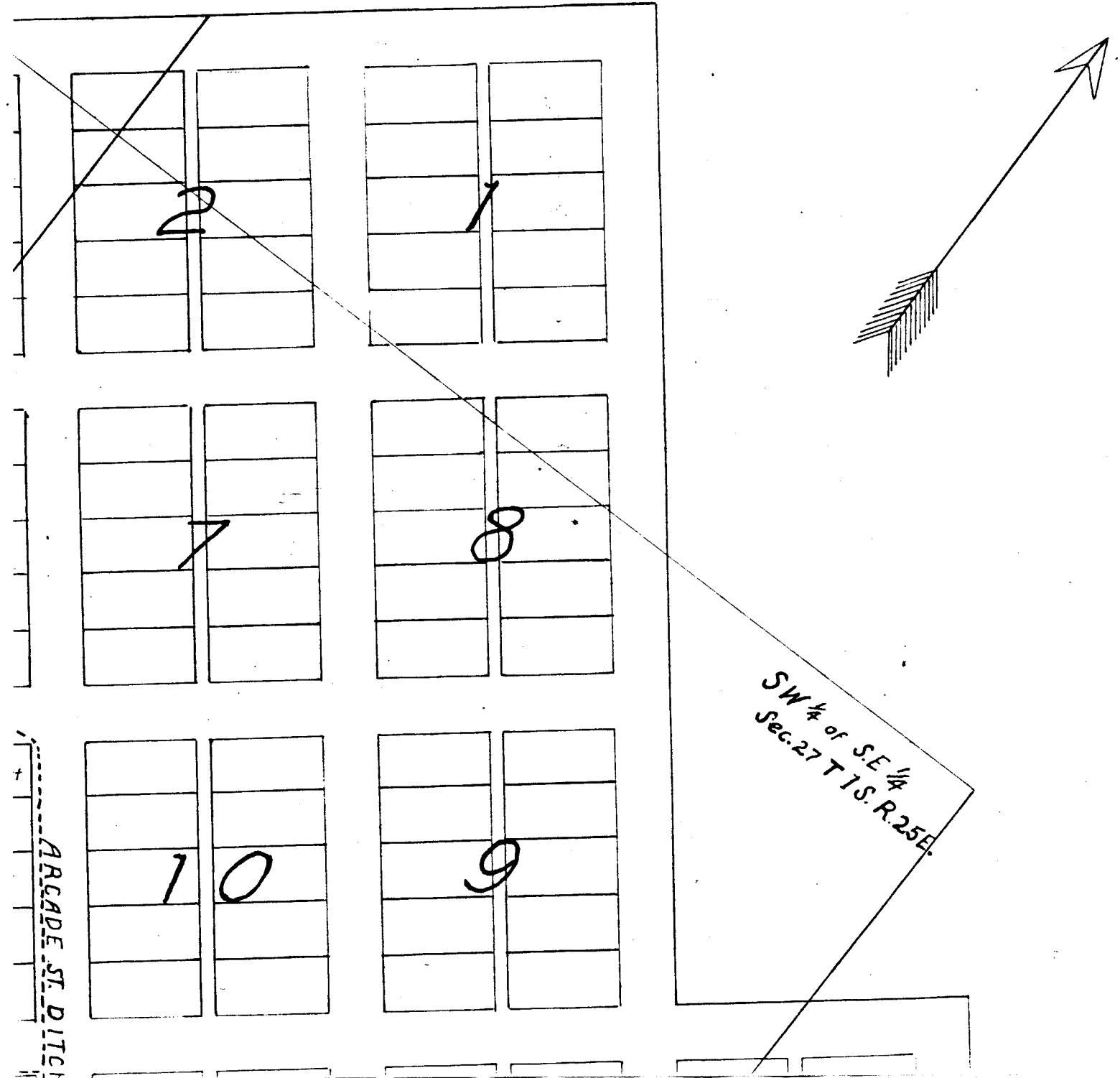
THE S. A. PRISTOL CO. PRINTERS & BOOKBINDERS, 117 N. 3RD ST., WYOMING, WY.

Surveyed by R.D. Gooper - July 1909  
 John H. Lewis - State Engineer  
 Examined July 14, 1909.



*Willow Creek Adjudication.*

# TOWN



# LEXINGTON

2	1

2	2

4	

3	

Sarah Booher
Sarah Booher
Sarah Booher
Sarah Booher
Sarah Booher
Sarah Booher

Sarah Booher
Sarah Booher
Sarah Booher
Sarah Booher
Sarah Booher
Sarah Booher

5
Ruth Barnett
Ruth Barnett

WE Pointer

6
JM White
JM White

2

Mrs Boothby
Mrs Boothby

Joe Eskelson
Joe Eskelson
Joe Eskelson
Joe Eskelson
Joe Eskelson
Joe Eskelson

Mrs. C.A. Bengt
W.R. Monkers
2 W.R. Monkers
W.R. Monkers
W.R. Monkers
W.R. Monkers

WE Leach
Breeding
7 E.A. Bolash Trustee for Congregational Church

WG Scott
WG Scott
7 WG Scott
Mrs. Beymer
Mrs. Beymer

Mill

Place

Ellis

John

John

John

ARCADE ST. DITCH



1 Lot = 1/6 Acre

Note - Lots in Which Names Are Shown Are Irrigated

John H. Lewis - State Engineer      Examined J.

ARCADE ST. DITCH

7	

8	

SW 1/4 of SE 1/4  
Sec. 27 T 15. R. 25 E.

10	

9	

John McMillion	
John McMillion	
John McMillion	5
John McMillion	
John McMillion	

J.E. Gentry	A.M. Zink
J.E. Gentry	A.M. Zink
7	6
	F. Beymer
	W.F. Barnett
	W.F. Barnett

Peter McCabe	E.S. Duran
Peter McCabe	E.S. Duran
Peter McCabe	E.S. Duran
W.F. Barnett	E.S. Duran

1	8
Mrs. Beymer	
Mrs. Beymer	

	Frank Parker
W.B. McAllister	Roy McAllister
W.B. McAllister	7
Mrs. S.J. Boothby	E.W. Moyers
Mrs. S.J. Boothby	E.W. Moyers

PENLAND DITCH

10	1
9	2
8	3
7	4
6	5

All lots numbered the same

Scale 150 Ft. = 1 in

Lexington.

15. 25 E.

mined July 14, 1909.