

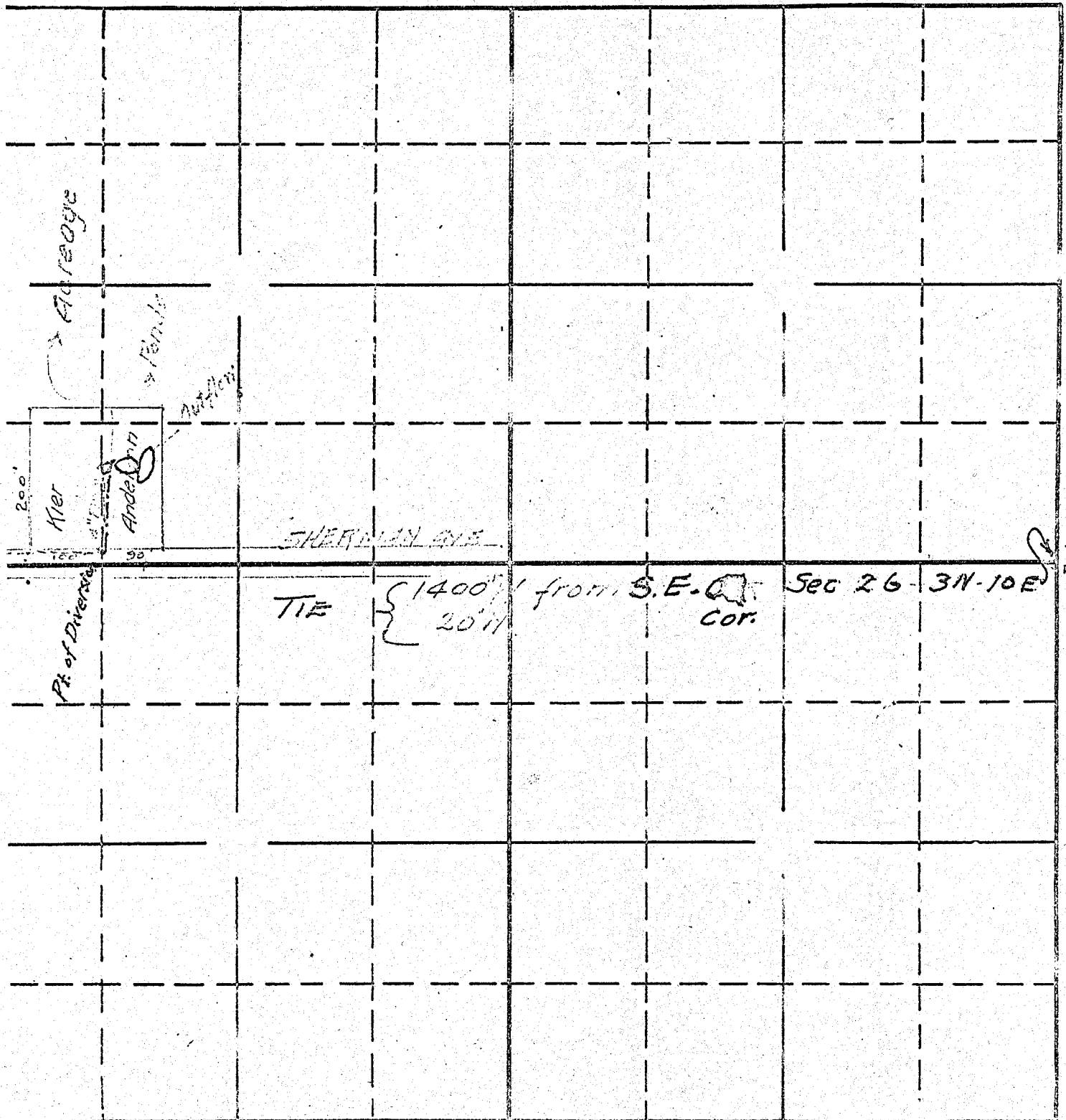
SECTION

Sec 26

13172

TOWNSHIP 3 N., RANGE 10 E., W. M.
IN CITY OF HOOD RIVER

North



East

South

RECEIVED
JUL 29 1938
STATE ENGINEER
SALEM, OREGON

1"=200'

1746.576
4-20
APPLICATION No. 17461
PERMIT No. 13172