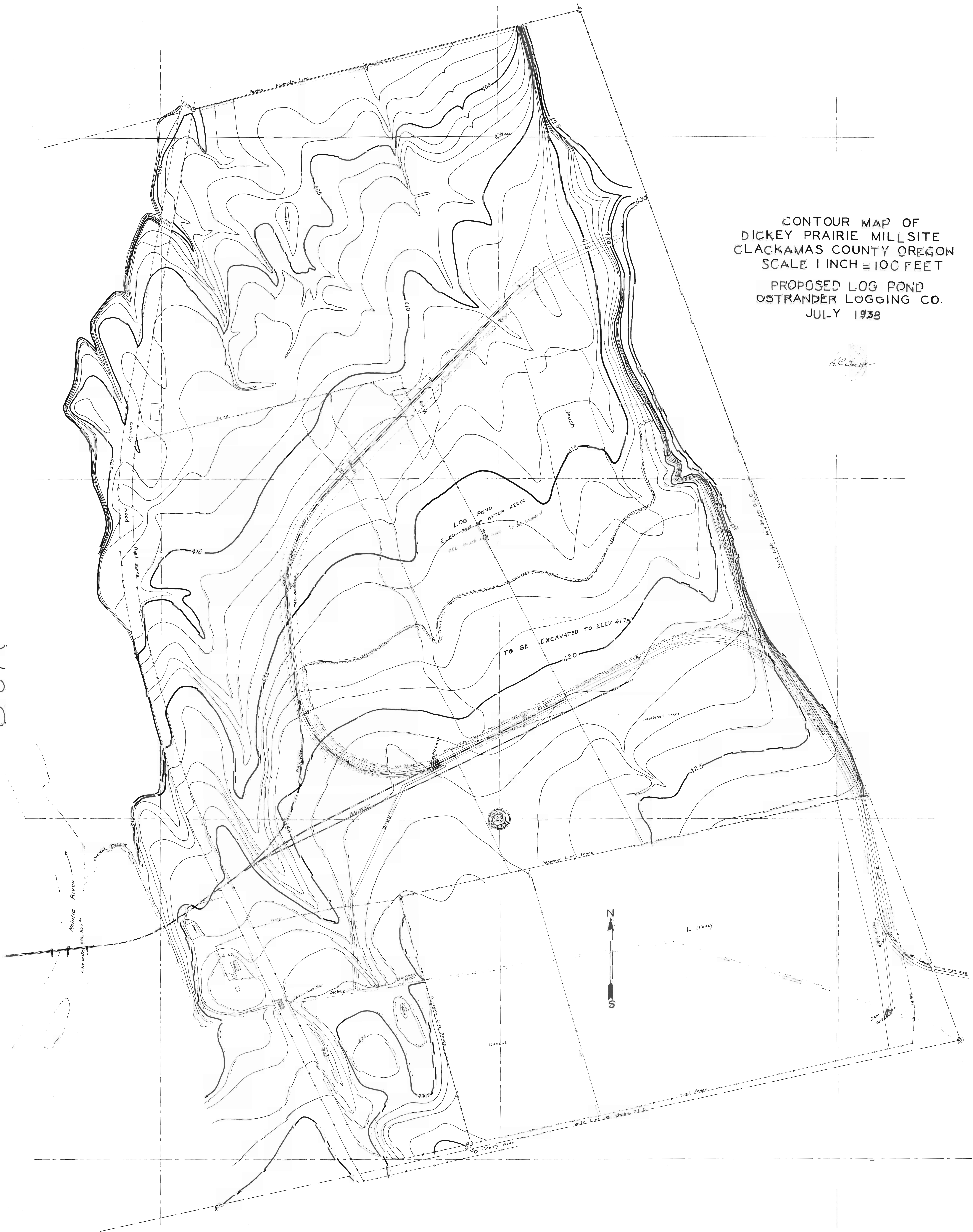


CONTOUR MAP OF
DICKY PRAIRIE MILLSITE
CLACKAMAS COUNTY OREGON
SCALE 1 INCH = 100 FEET

PROPOSED LOG POND
OSTRANDER LOGGING CO.
JULY 1938

H.C. Bunker

D-37-9



OSTRANDER LOGGING CO.
 PROFILE OF
 DIKE LINE FOR PROPOSED LOG POND
 SECTION 23-TWP. 5 S.-R. 2 E. OF W.M.
 CLACKAMAS COUNTY OREGON
 JULY - 1938.



Continuation from Plan 24-90 Log Pond

