

26

35

36

C. 13544

C. 13564

C. 13564

M. Boge Ranch  
Surveyed Oct 25, 1923.

WEST BRANCH of TAYLOR CREEK

WEST BRANCH of TAYLOR CREEK

See loc.

	23	14	
	24	13	

21

22

28

27

33

34

6

5

7

8

18

17

13 path Land + 1/2



13

14

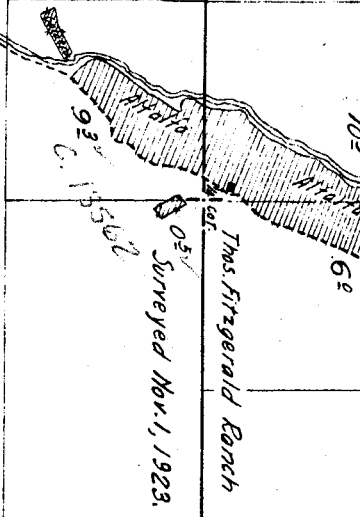
21

11

1

2

1/2 Sec. 16



Thos. Fitzgerald Ranch

Section

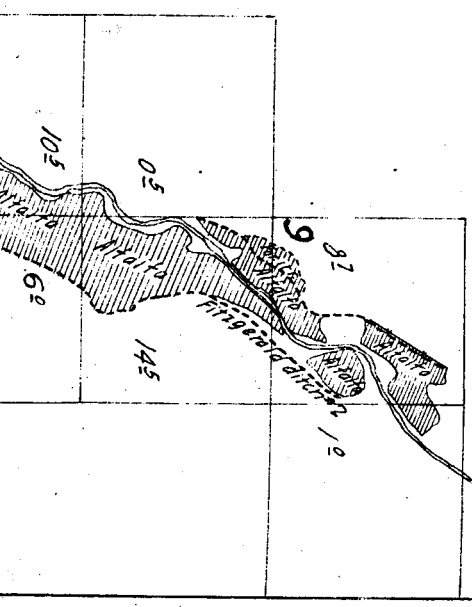
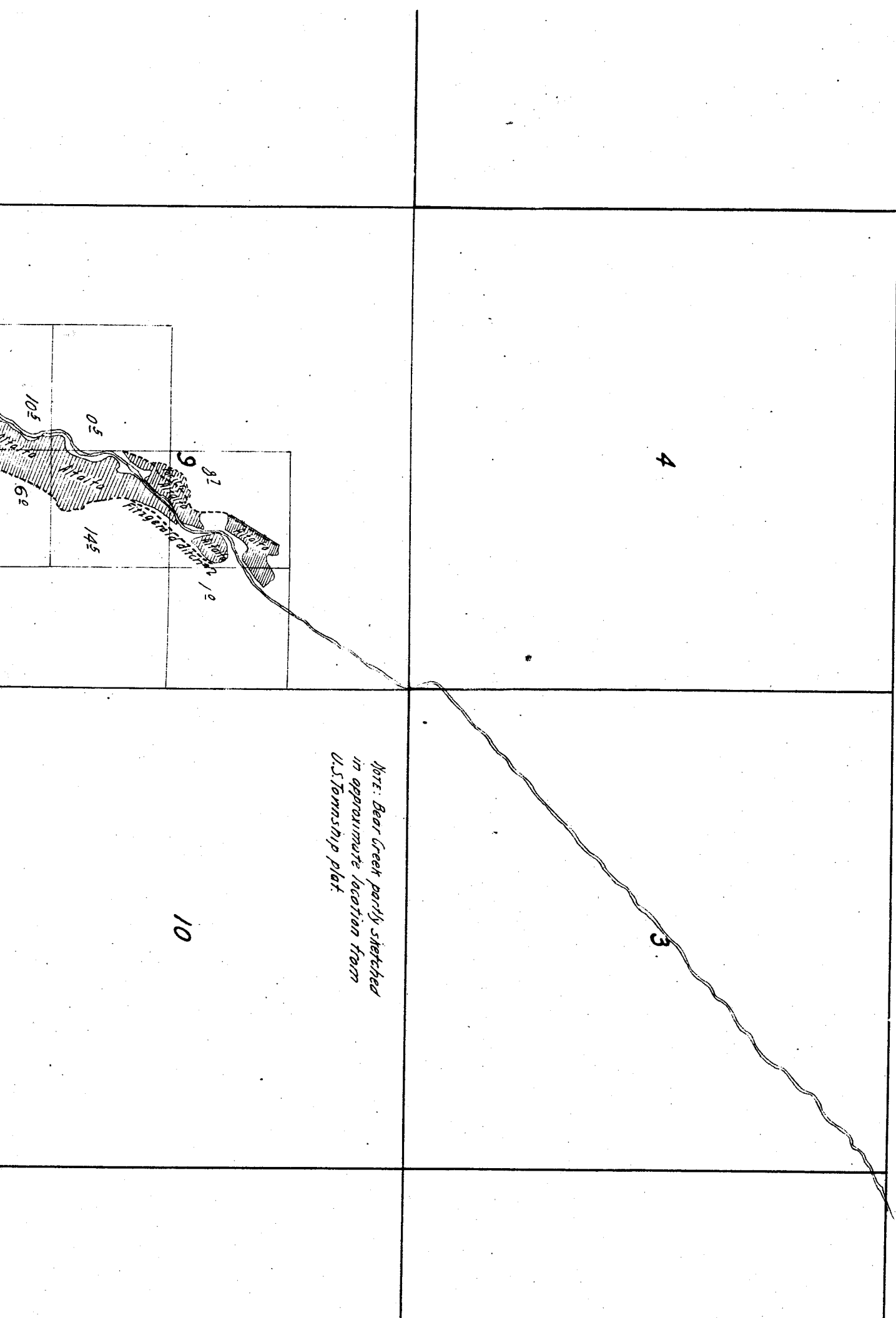
16

15

21

22

Township 11 S, Range 20 E.



*Note: Bear Creek partly sketched  
in approximate location from  
U.S. Township plat.*

10

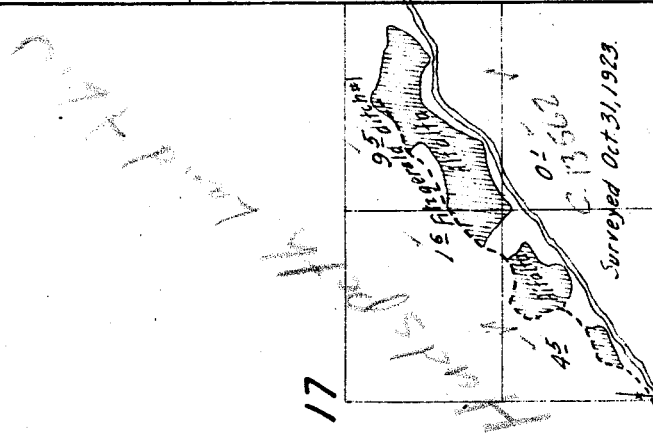
4

3



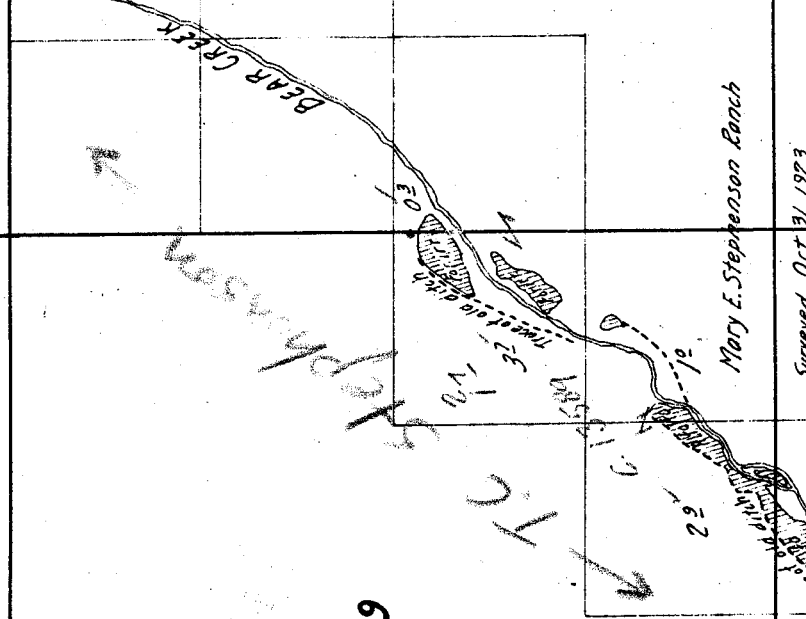
16

12



17

02



19

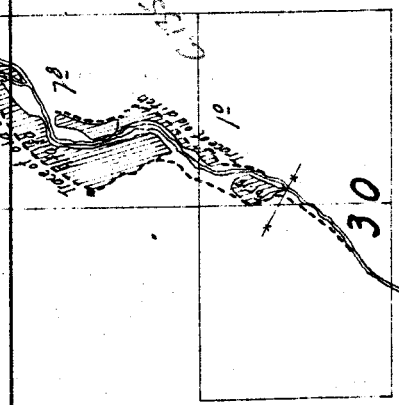
18

MARY E. STEPHENSON

BEAR CREEK



Surveyed Oct. 31, 1923



28

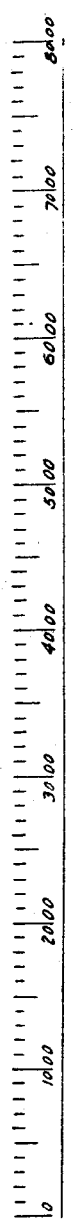
29

30

33

32

31



Scale of Feet