

*Note: Creeks partly sketched in approximate location from U.S. Township plat.*

22

15

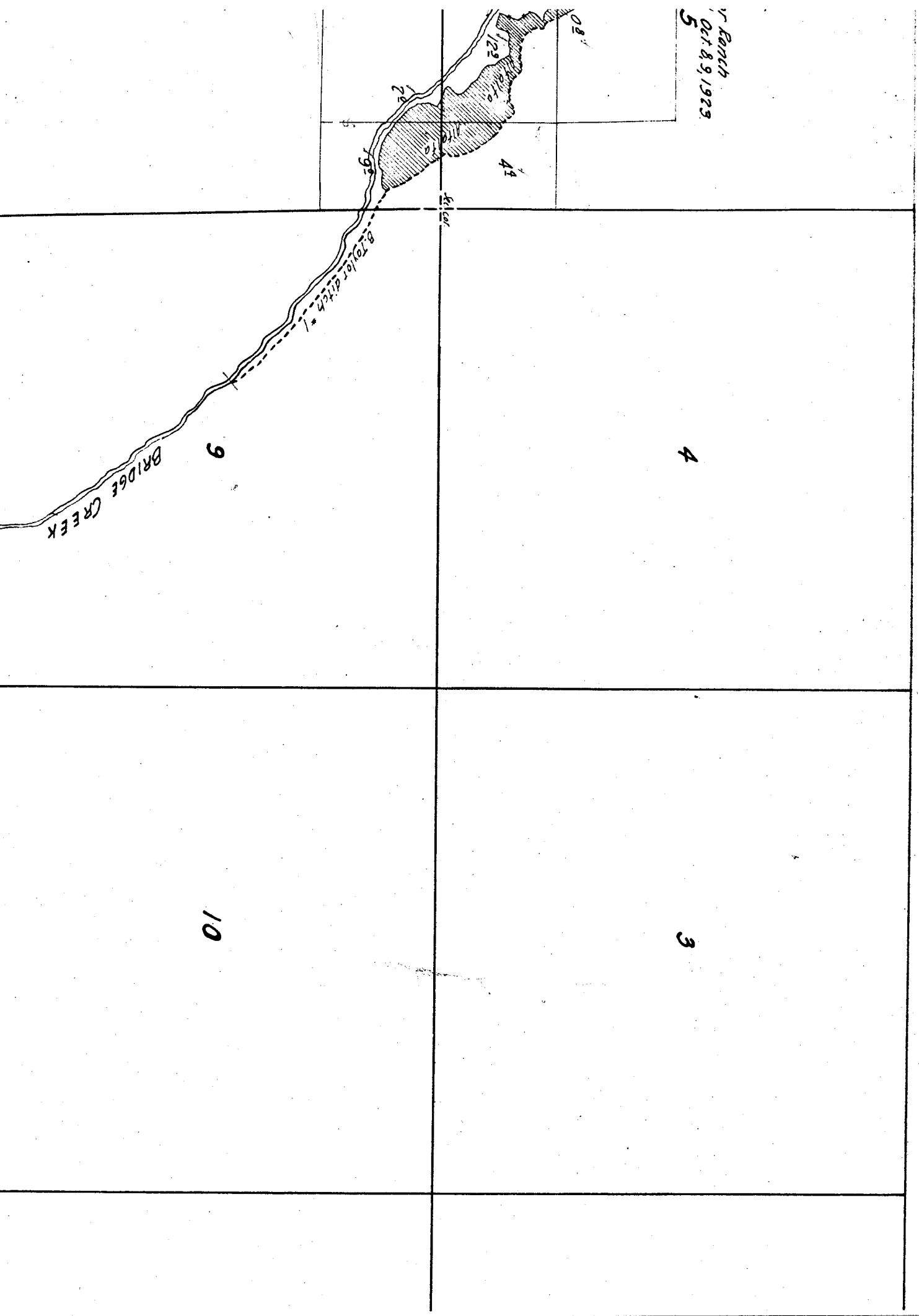
16

7

923

Township 11 S, Range 21 E.

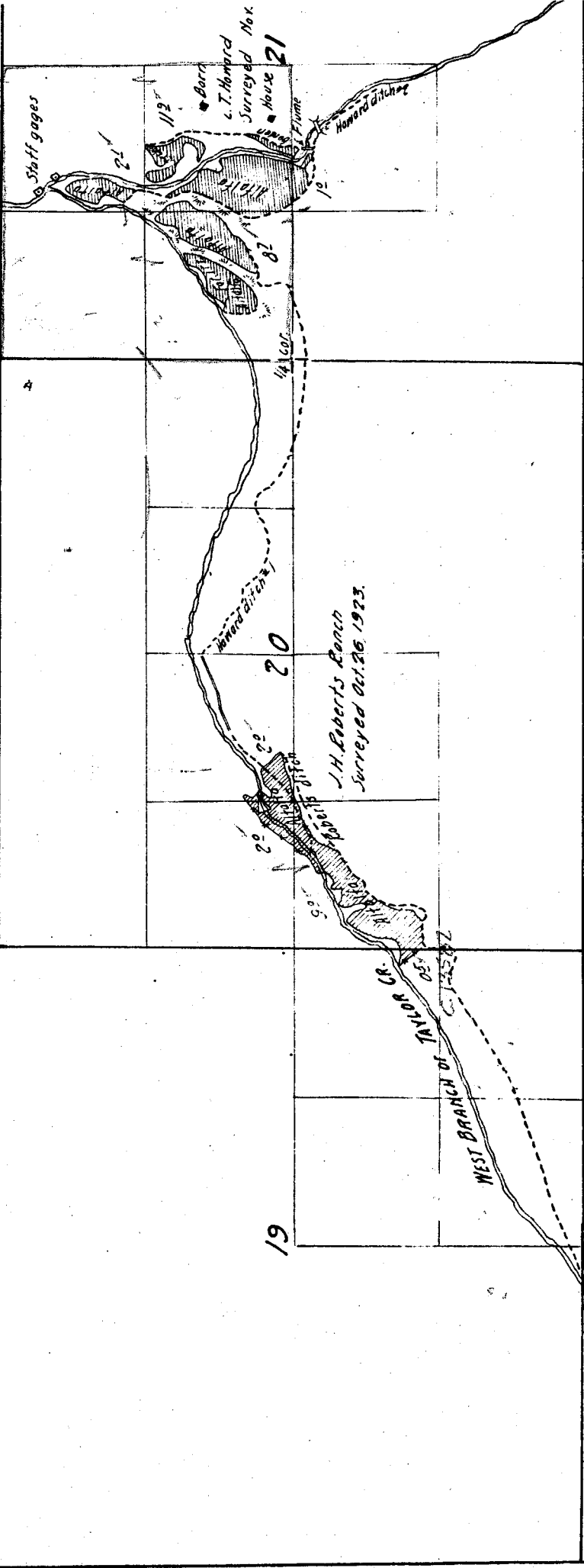
V Ranch  
Oct 8, 9, 1923  
5



16

17

18



Staff gages

Barre  
C. T. Howard  
Surveyed Nov.  
House 21

112'

1/4 COR.

20

19

J. H. Roberts Ranch  
Surveyed Oct. 26, 1923.

WEST BRANCH OF TWIN CREEK

Howard Ditch

90'

90'

90'

90'

90'

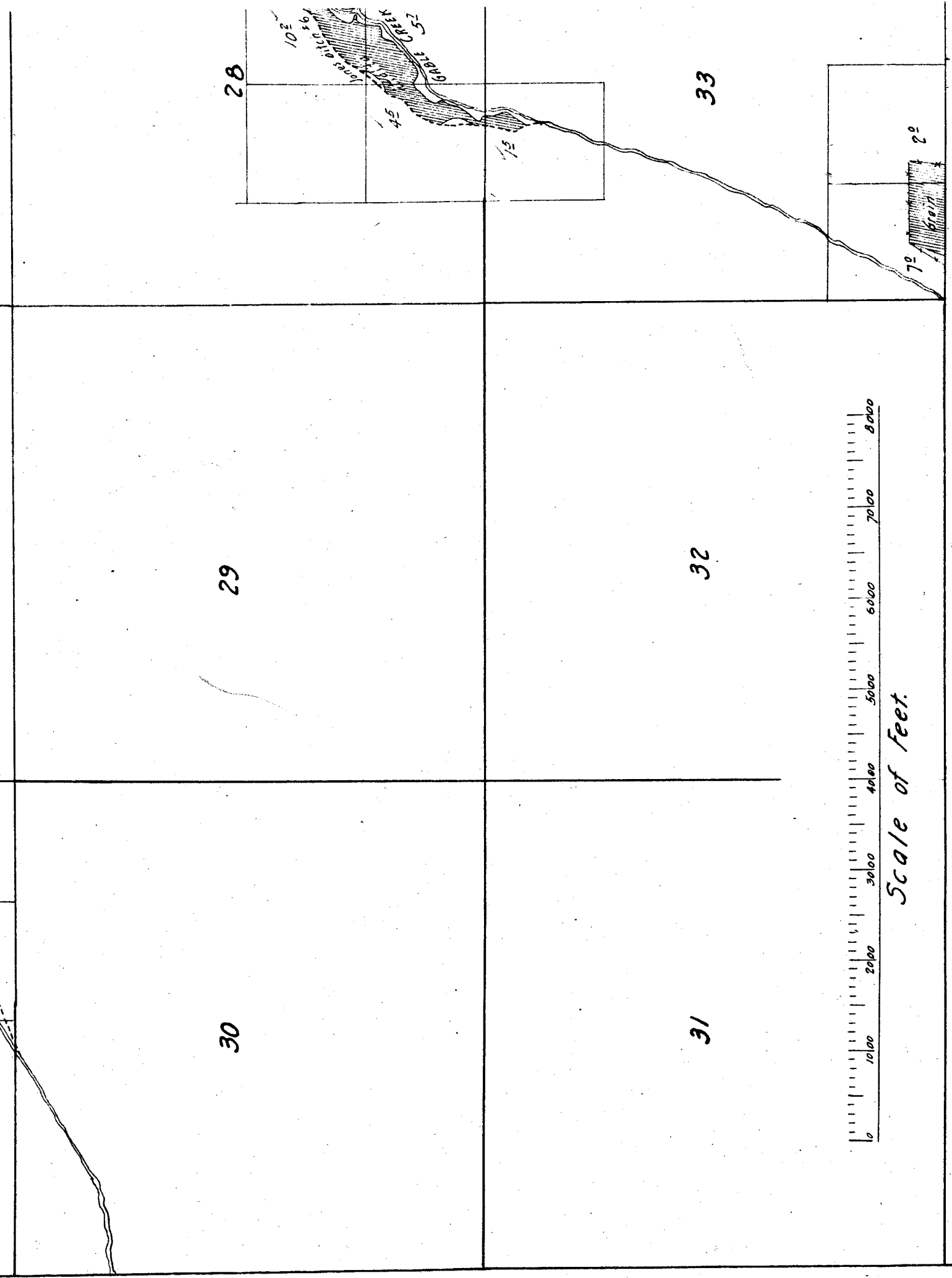
90'

90'

90'

90'

90'



30

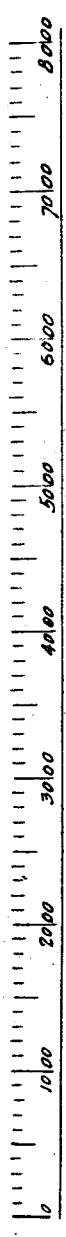
29

28

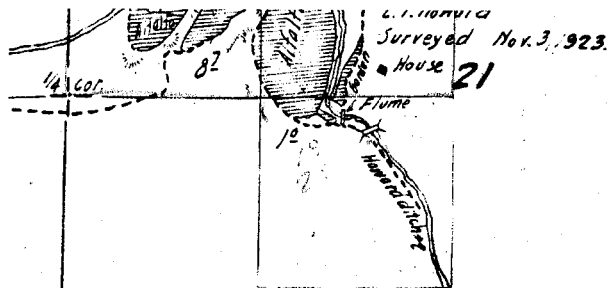
31

32

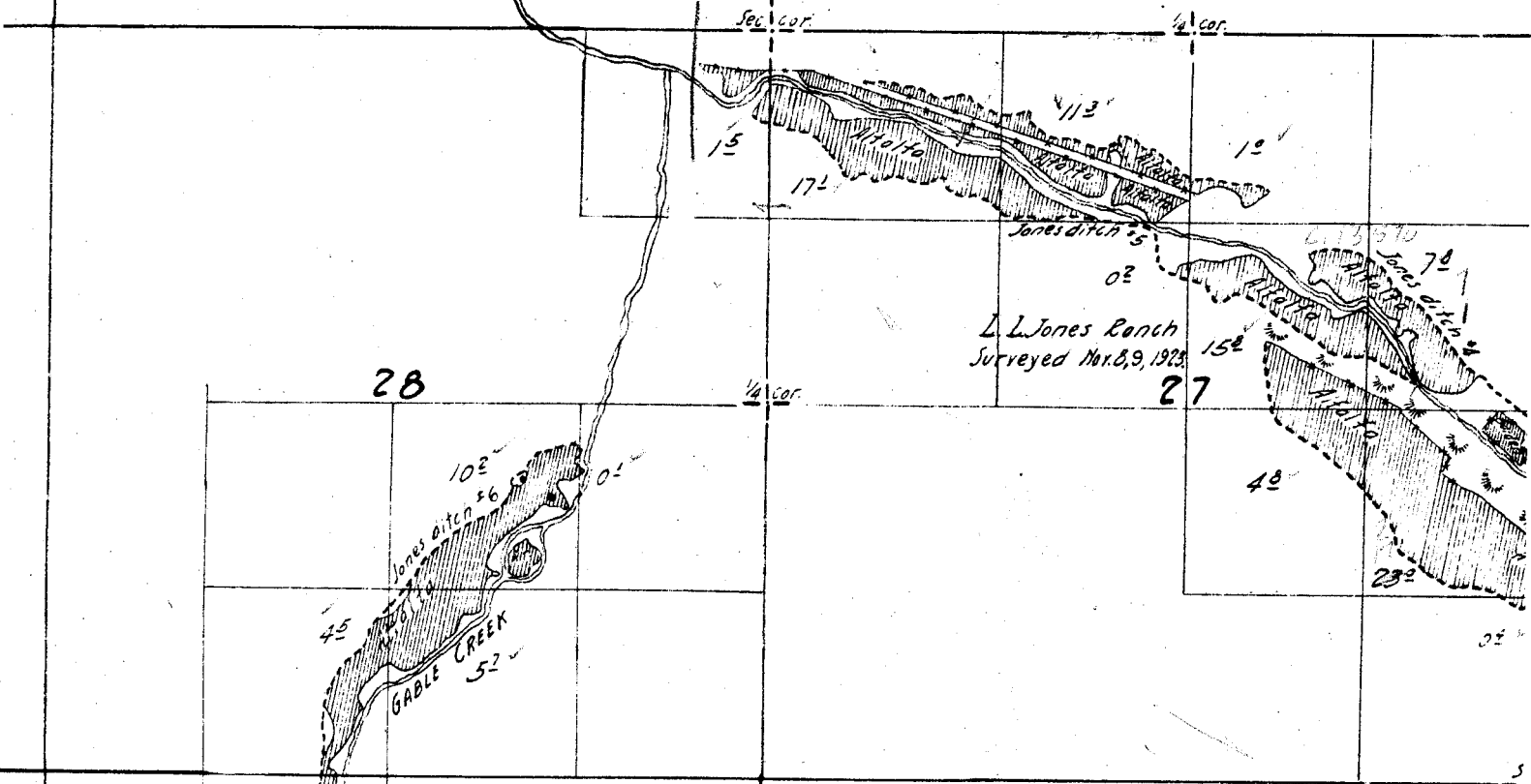
33



Scale of Feet.

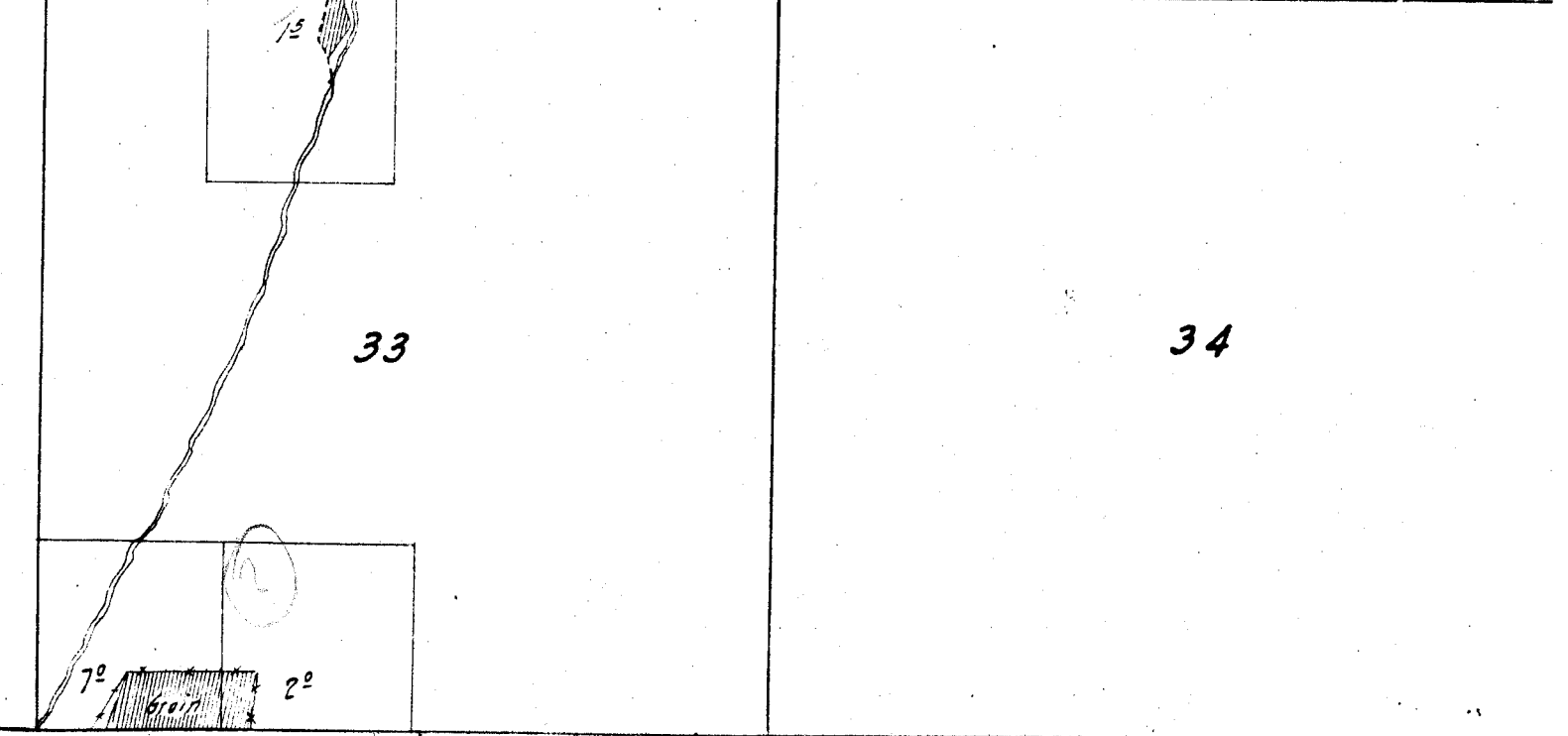


22



28

27



33

34

E.

6-1-1

2

1

11

12

14

13

1/4 cor

Sec  
1/4 cor

6

Ben Taylor Ranch  
Surveyed Oct. 8, 9, 1923

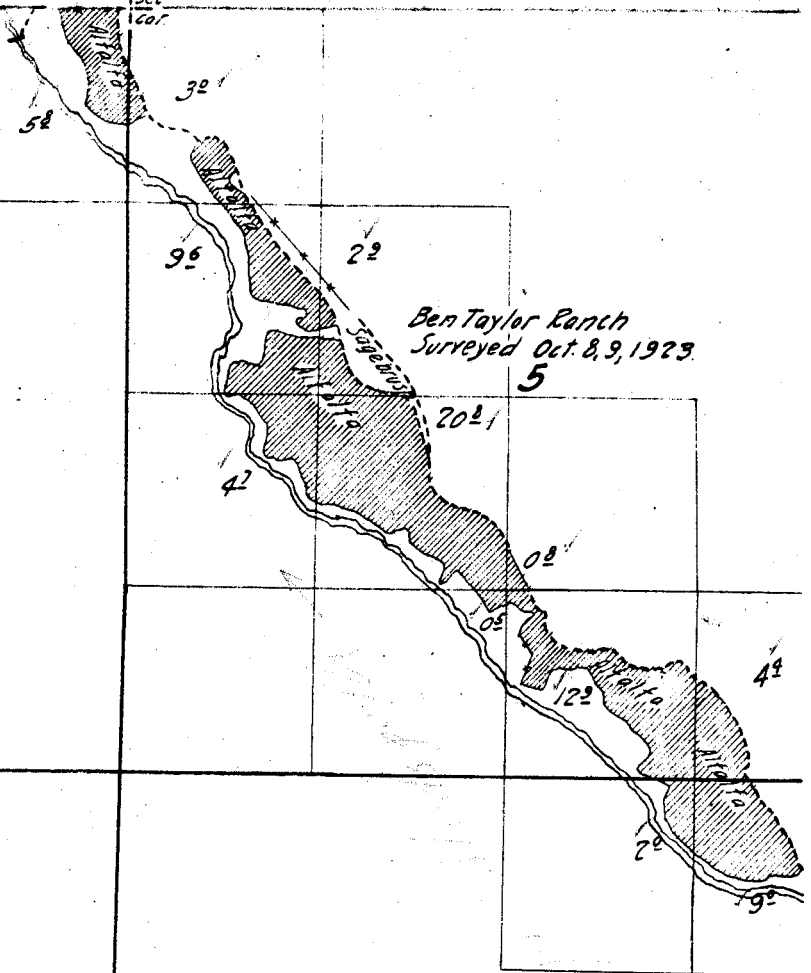
5

7

8

18

17



13

24

14

23

15

22

*'s partly sketched in approximate  
from U.S. Township plot.*







6th Nelson Reservoir  
Per # 462  
P 4325

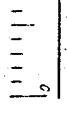
28

27

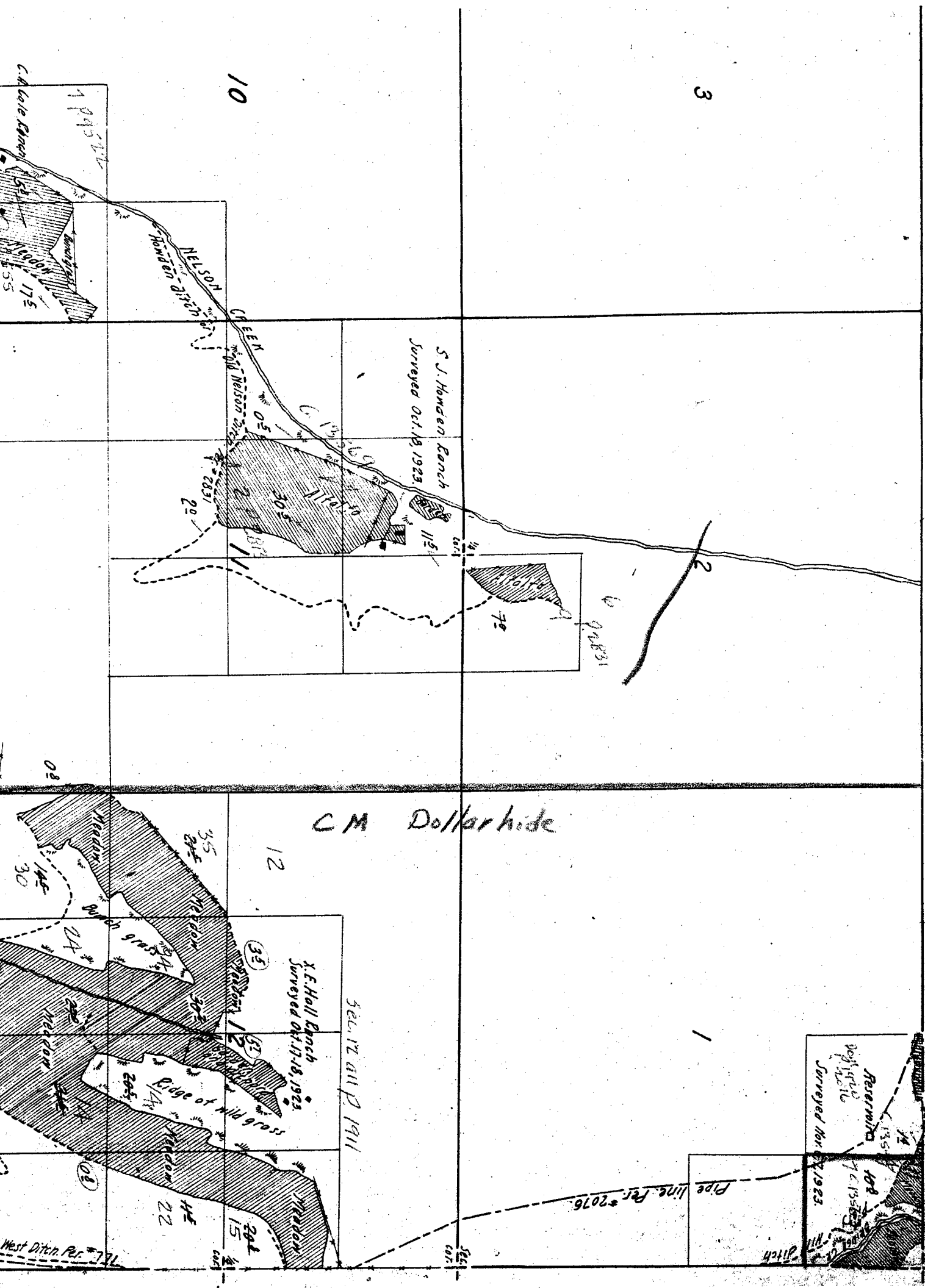
33

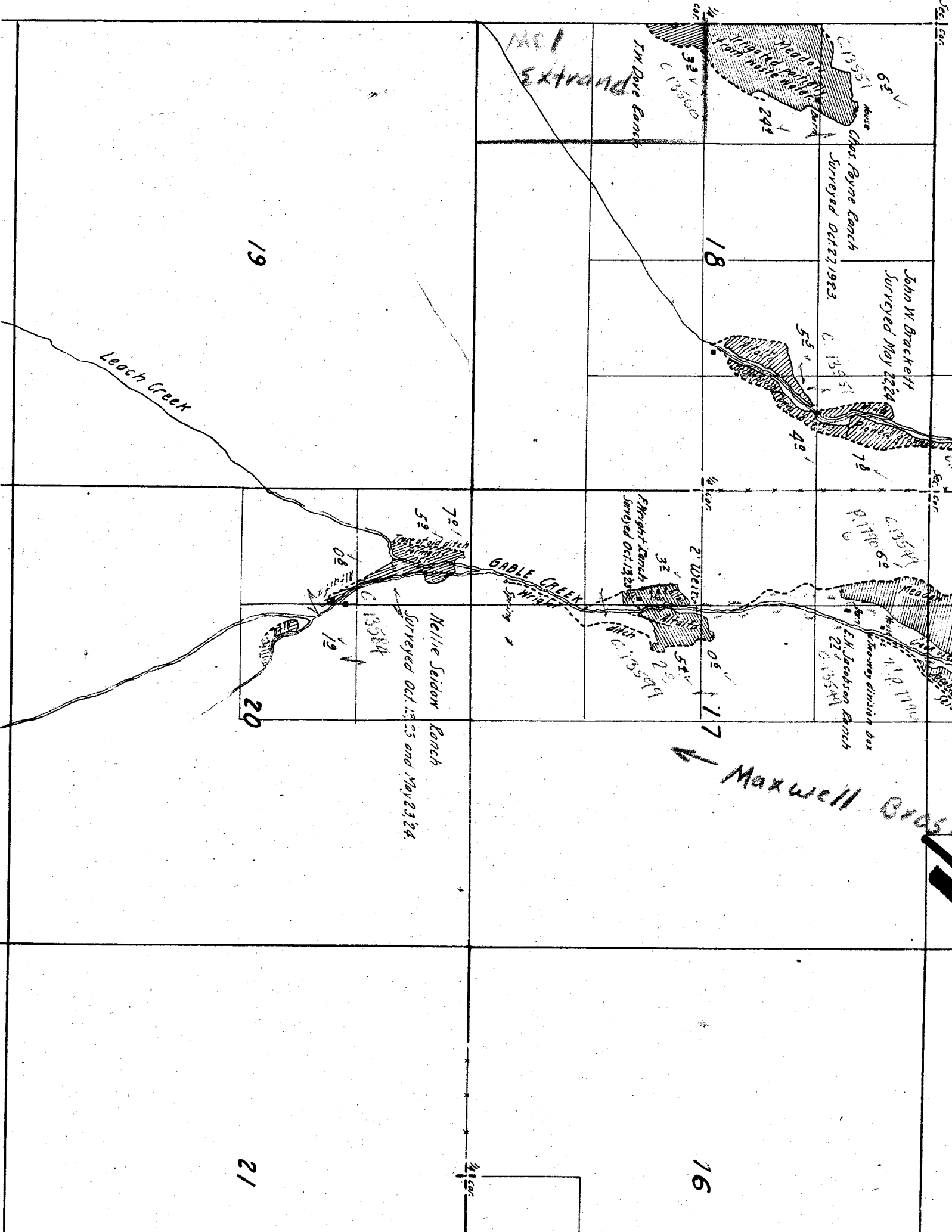
34

Maxwell Creek









65' 1/2  
House

C. 13551  
Chas Payne Ranch  
Surveyed Oct 27 1923

John W Brackett  
Surveyed May 22 24

C. 13551  
72'

C. 13549  
P. 17100  
6'

E.H. Jacobson Ranch  
Surveyed Oct 13 23

F Wright Ranch  
Surveyed Oct 13 23

05' 1/2  
177'

Maxwell Bridge

Nellie Seidon Ranch  
Surveyed Oct 15 25 and May 23 24

19

18

20

16

21

Leach Creek

GABLE CREEK

TM Dove Ranch

1351  
54' 1/2

32' 1/2  
C. 13500

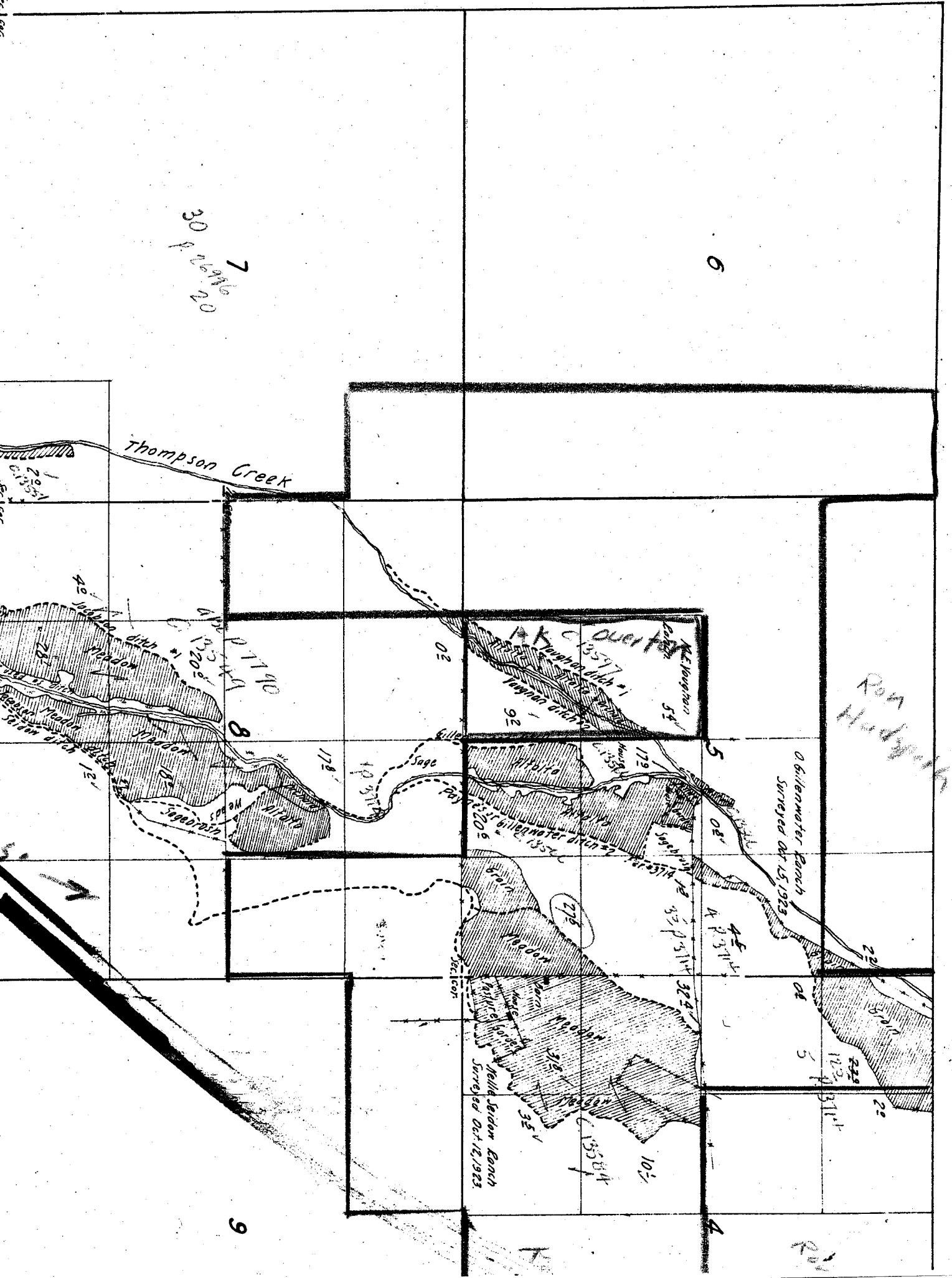
1/4 cor

2' 1/2  
C. 13549

1/4 cor

1/4 cor

# Township



23

24

26

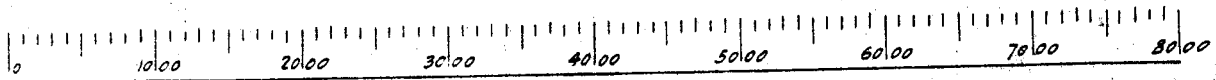
25

Bridge Cr on Quady  
MILL CREEK

35

36

NOTE: - Creeks sketched in approximate location  
from U.S. Township plats or from Forest Service  
map except in vicinity of irrigated areas.  
Permit ditches plotted in approximate location  
from permit maps except in vicinity of irriga-  
ted areas.



Scale of Feet



19

20

Leach Creek

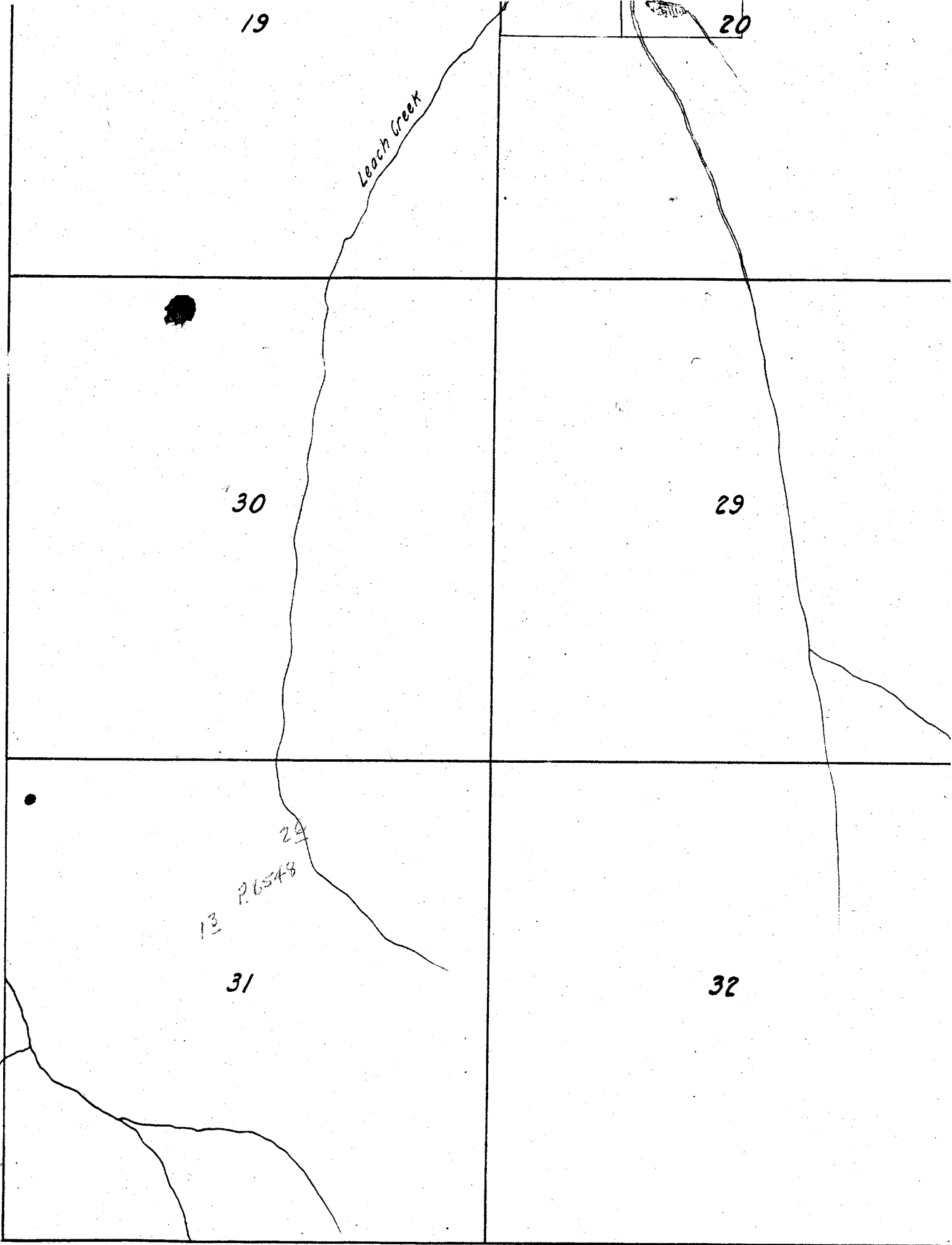
30

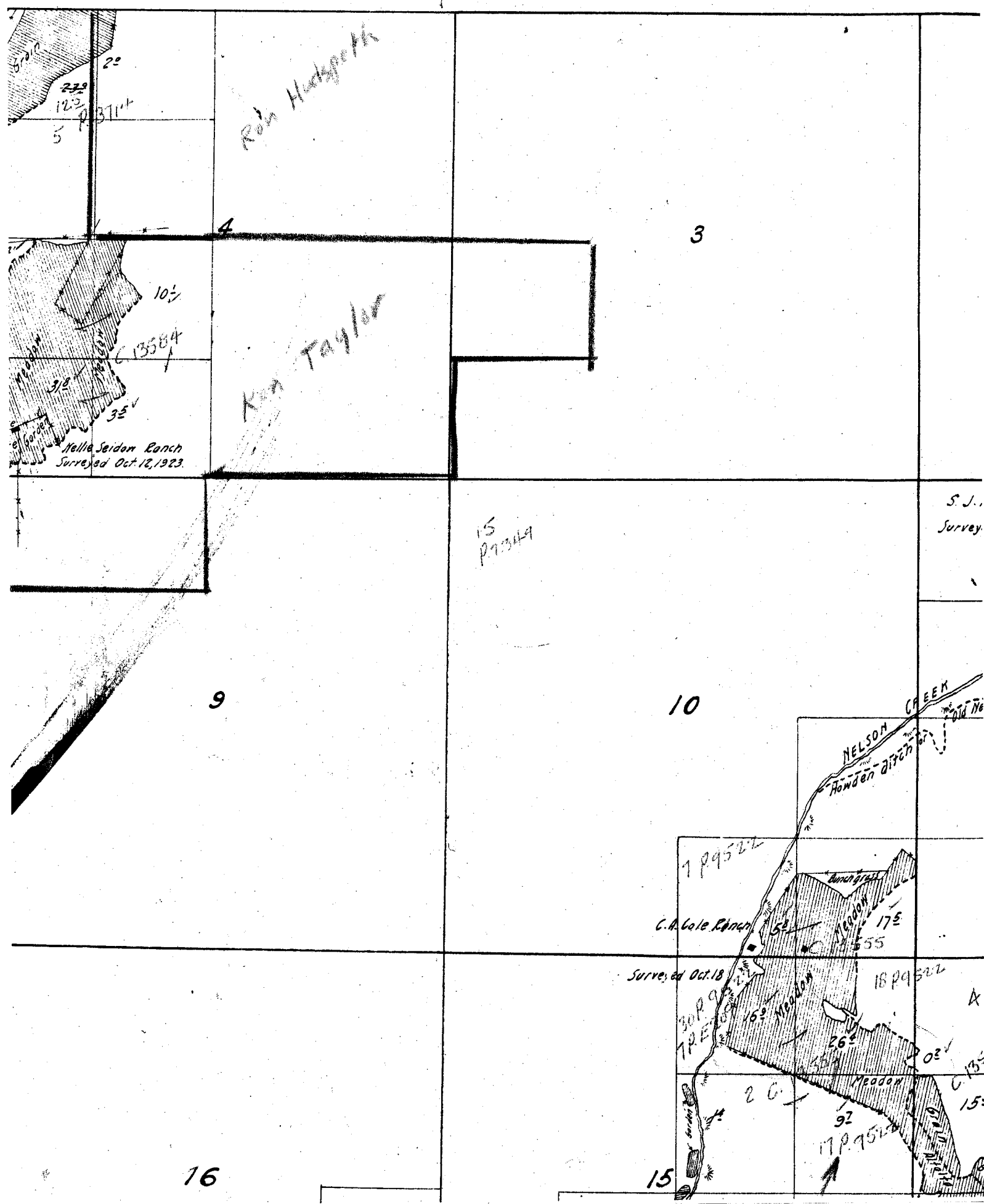
29

13 P. 6548

31

32





S. J. Survey.