

18

17

16

19

20

21

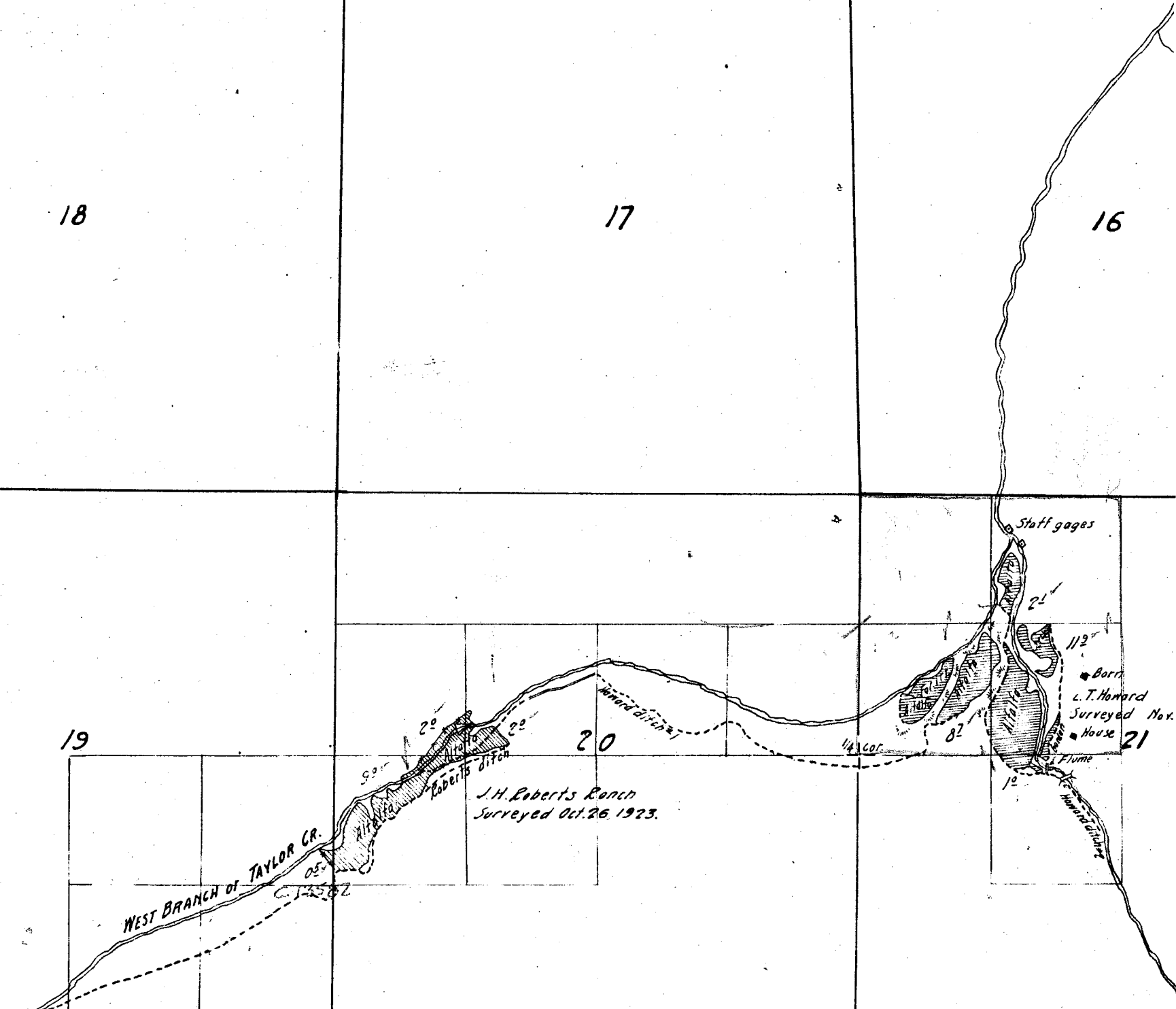
WEST BRANCH OF TAYLOR CR.

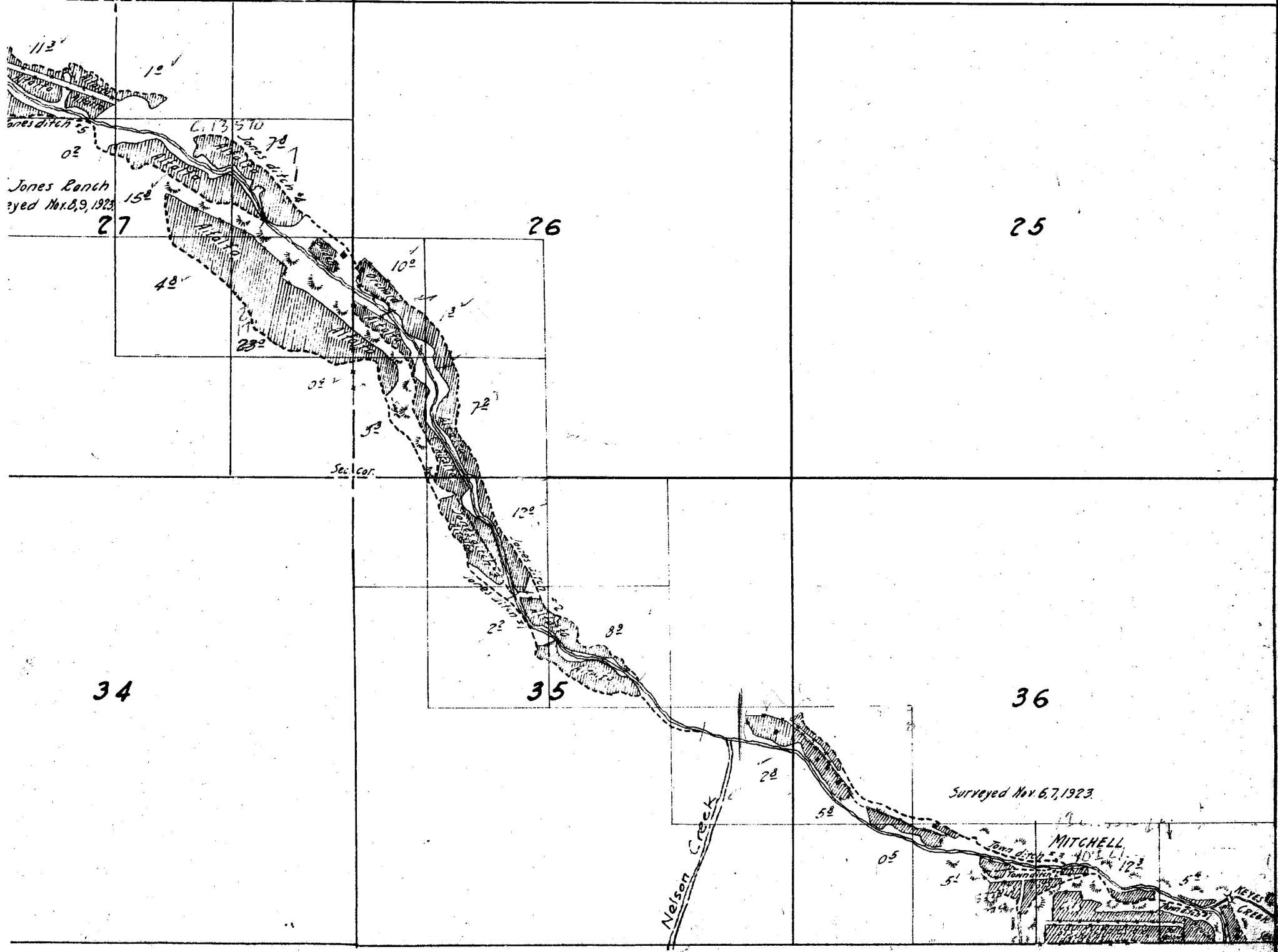
Roberts ditch

J.H. Roberts Ranch
Surveyed Oct. 26, 1923.

Staff gages

Barr
L.T. Howard
Surveyed Nov.
House





Jones Ranch
surveyed Nov. 6, 7, 1923

27

26

25

34

35

36

Nelson Creek

Surveyed Nov. 6, 7, 1923

MITCHELL

NEVER CREEK

15

14

13

*'s partly sketched in approximate
from U.S. Township plat.*

22

23

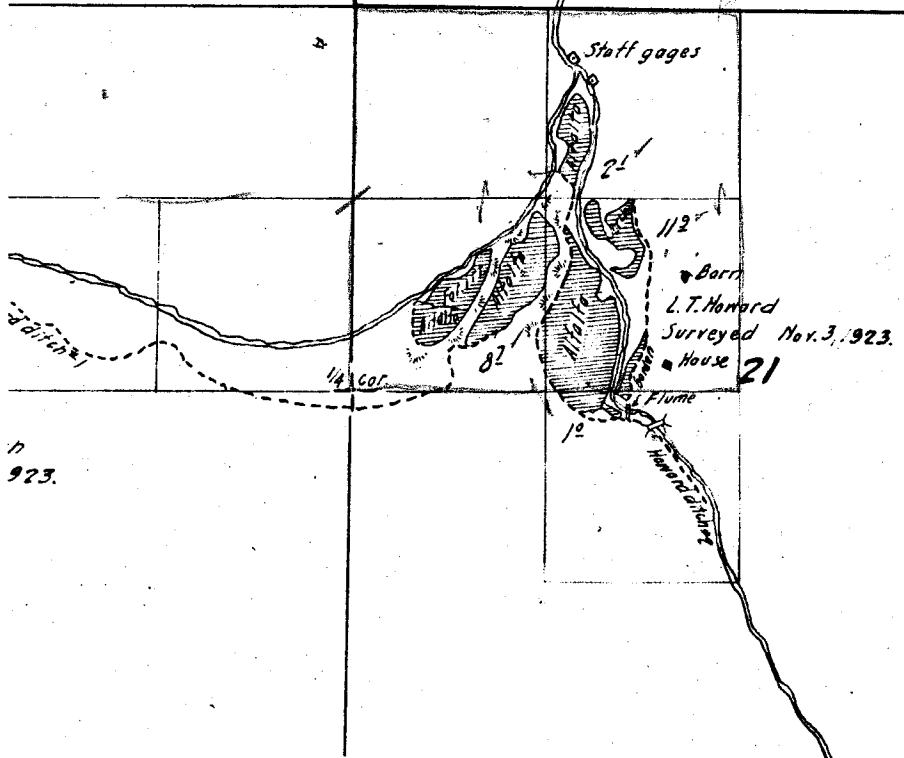
24

$\frac{1}{4}$ cor.

7

16

15



n
923.

Note: Creeks partly sketched in approximate location from U.S. Township plat.

22

Township

11 S,

Range

21 E.

or Ranch
Oct. 8, 9, 1923
5

4

3



9

10

BRIDGE CREEK

E.

6-1-1

2

1

11

12

14

13

22

L. L. Jones
Surveyed Nov. 3, 1923.

House 21

82

1/4 cor.

10

Flume

Woods ditch

Sec. cor.

1/4 cor.

15

15

113

172

Jones ditch 15

02

L. L. Jones Ranch
Surveyed Nov. 8, 9, 1923.

27

152

48

232

02

28

1/4 cor.

102

Jones ditch 16

01

45

GABLE CREEK
52

15

33

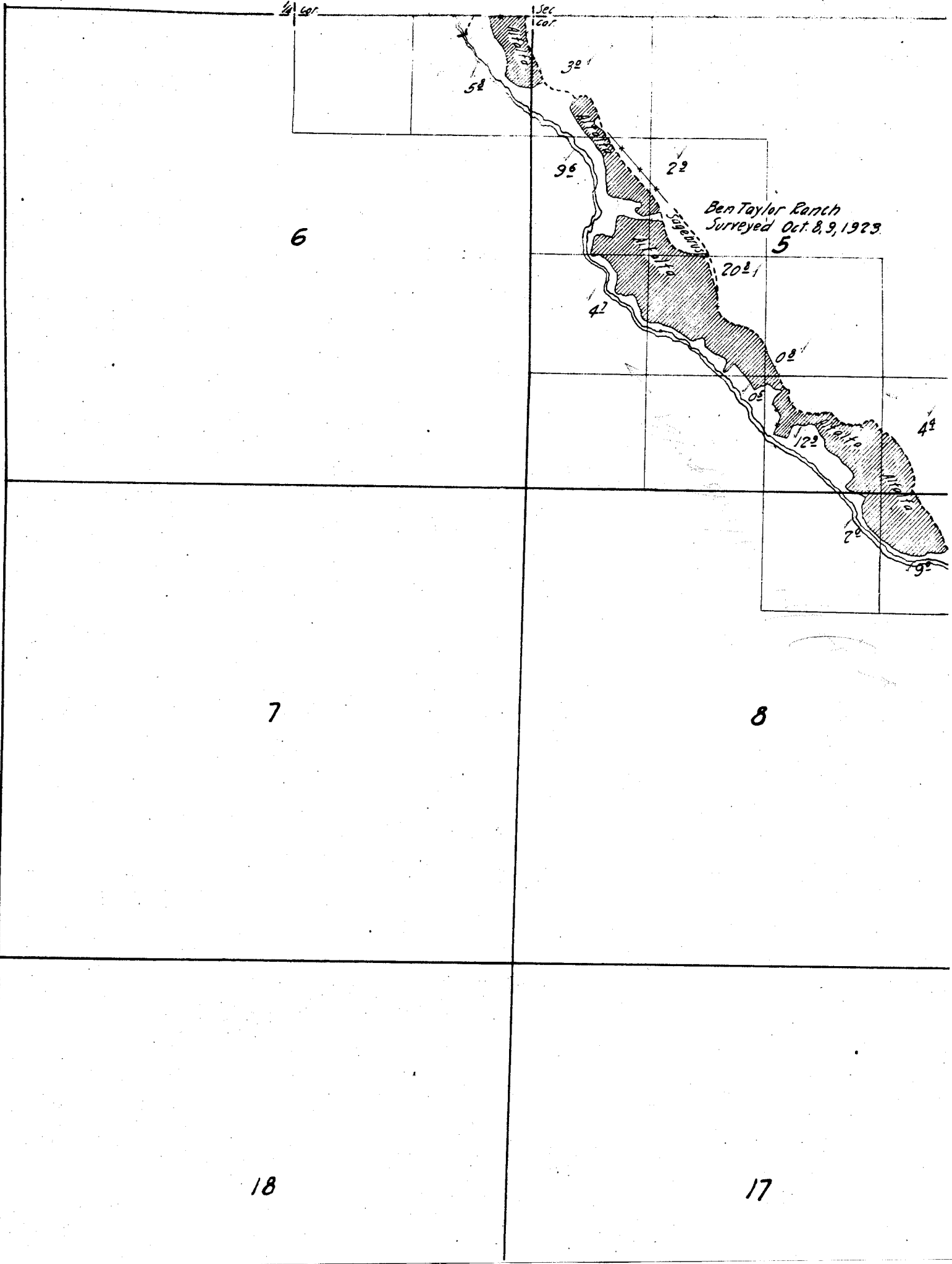
34

72

6017

22





6

Ben Taylor Ranch
Surveyed Oct. 8, 9, 1923

5

7

8

18

17