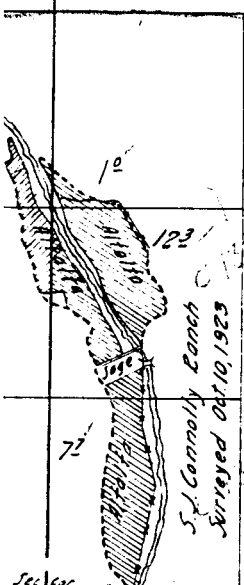


JOHN DAY RIVER

54 2006  
04 SE  
172  
from John Day 127  
31

32  
P24769

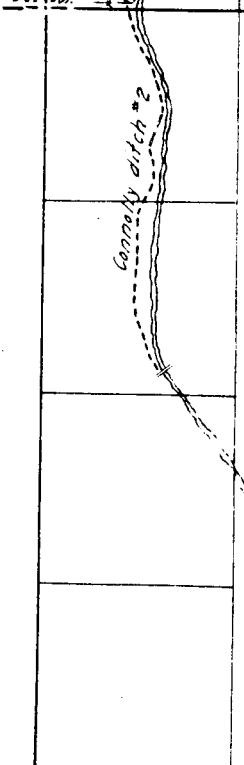


S.J. Connolly Ranch  
Surveyed Oct. 10, 1923

W. H. EXTRACT

2

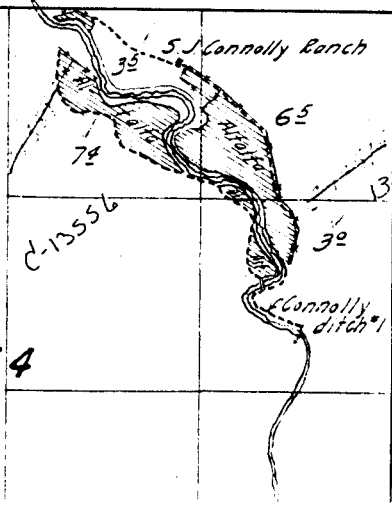
1



11

12

BRIDGE CREEK



S.J. Connolly Ranch

13556

13556

14

13

13

Mel EXTRA

24

23

22

S. Connolly Ranch

65

69

30

Connolly ditch #1

C13556

14

62

C13575

100

C13575

John Manning Ranch  
Surrender Oct. 9, 1929, 191

08

C13575

100

C13575

100

C13575

100

C13575

100

C13575

100

Washing ditch

Washing ditch

Washing ditch

Washing ditch

Sagebrush

Sagebrush

Sagebrush

Sagebrush

3E1

3E1

3E1

3E1

C13575

C13575

C13575

C13575

100

100

100

100

C13575

C13575

C13575

C13575

100

100

100

100

C13575

C13575

C13575

C13575

100

100

100

100

C13575

C13575

C13575

C13575

100

100

100

100

C13575

C13575

C13575

C13575

100

100

100

100

C13575

C13575

C13575

C13575

100

100

100

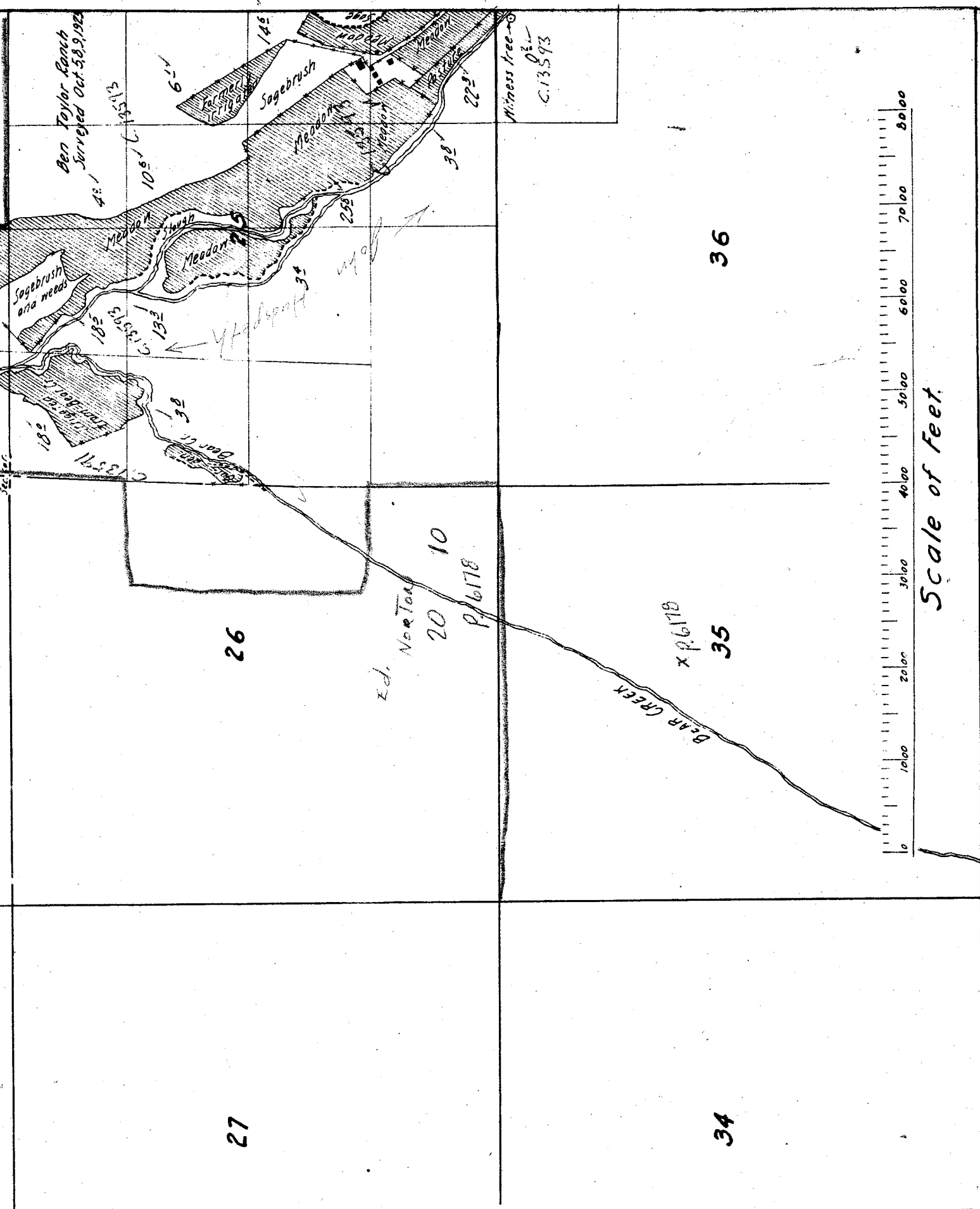
100

C13575

C13575

C13575

C13575



Ben Taylor Ranch  
Surveyed Oct. 5, 9, 1922

Sagebrush  
area needs

6-1/4

105' 1/2

182'

132'

38'

38'

26

27

Ed. Nor-Ton  
20 10  
P. 6178

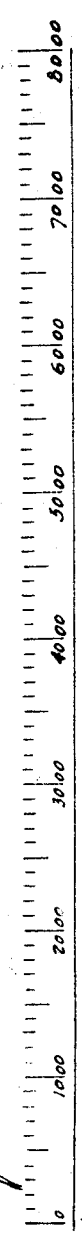
Witness tree  
C. 13593

36

35

34

DEAR CREEK  
x 96178



Scale of feet.



6

5

7

8

18

17

18

17

16

19

20

21

30

29

28

31

32.

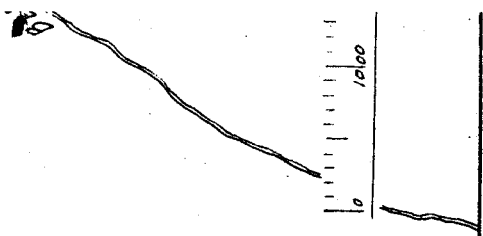
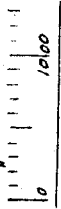
33

27

34

28

33





15<sup>\*</sup>

22

16

12